

EXPLANATION

Recent		Qac	Alluvial-colluvial deposits Grayish-brown silt and clay
		Qal	Alluvium Light- to dark-brown and grayish-brown mixture of clay, silt, and fine sand
Pleistocene		Qk	Kintyre formation Light-brown very fine sand and silt
		Qgm	Ground moraine Brown silt and clay containing sand and stones as large as boulders
		Qw	Wiota gravels Reddish-brown nonglacial quartzite gravel containing sand interstitially and as lenses
Upper Cretaceous		Kb	Bearpaw shale Dark-gray shale containing thin bentonite beds and several kinds of concretions
		Kjr	Judith River formation Light-brown very fine grained thin-bedded sandstone and grayish-brown siltstone and silty shale

Boundary of slumped material
(where mappable)
Dashed where approximate

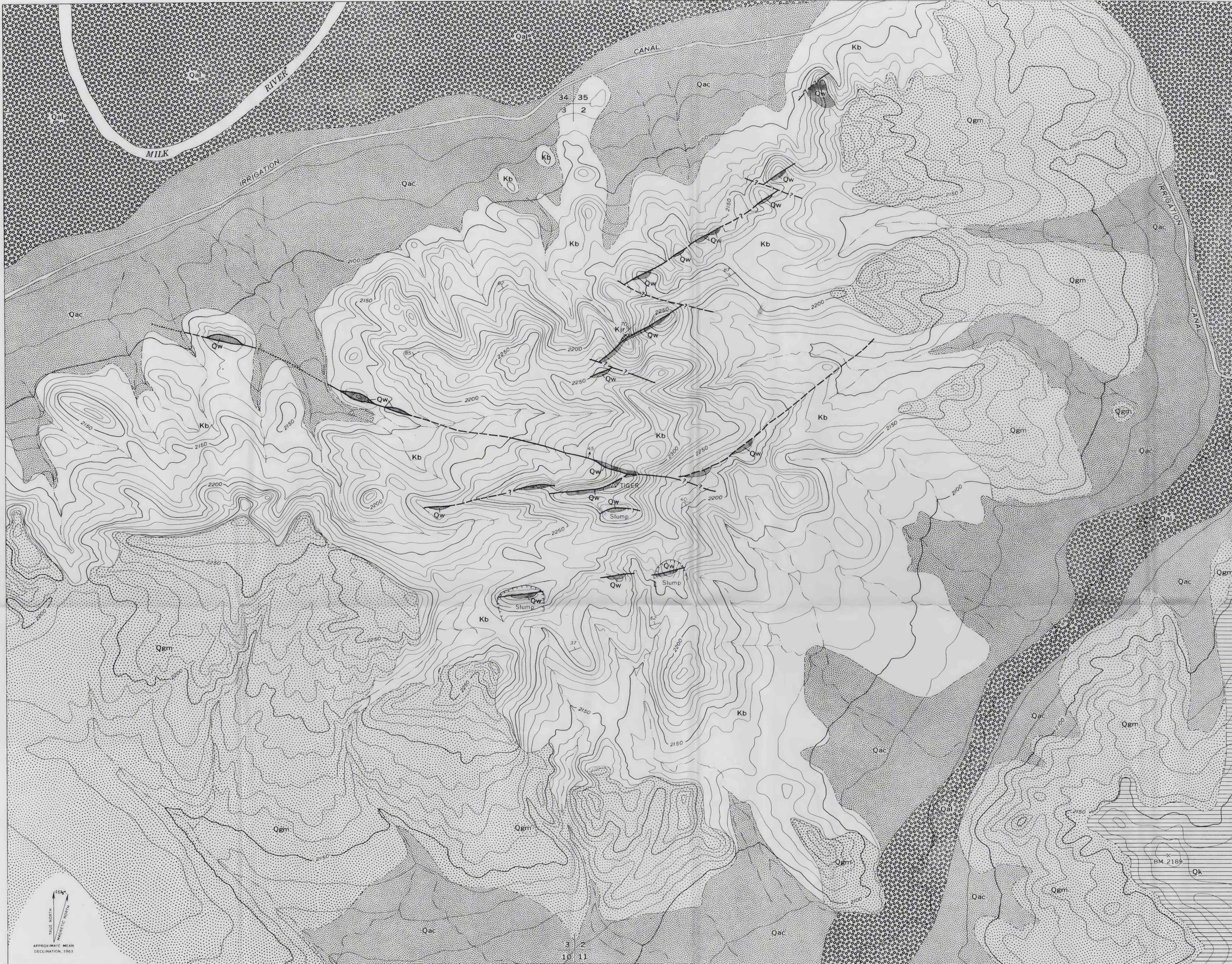
Contact
Dashed where approximately located

Fault, showing dip
Dashed where approximately located,
dotted where concealed

Inferred fault

Strike and dip of beds

Section corner



Topography sketched on the central part of enlarged air photograph, used as plane table sheet, by F. S. Jensen, J. O. Kistler, Roger Colton, and Clarence Lohman, Jr.

Geology by F. S. Jensen, assisted by J. O. Kistler, 1950-51

DETAILED GEOLOGIC MAP OF TIGER BUTTE, SOUTHEAST OF GLASGOW, MONTANA

