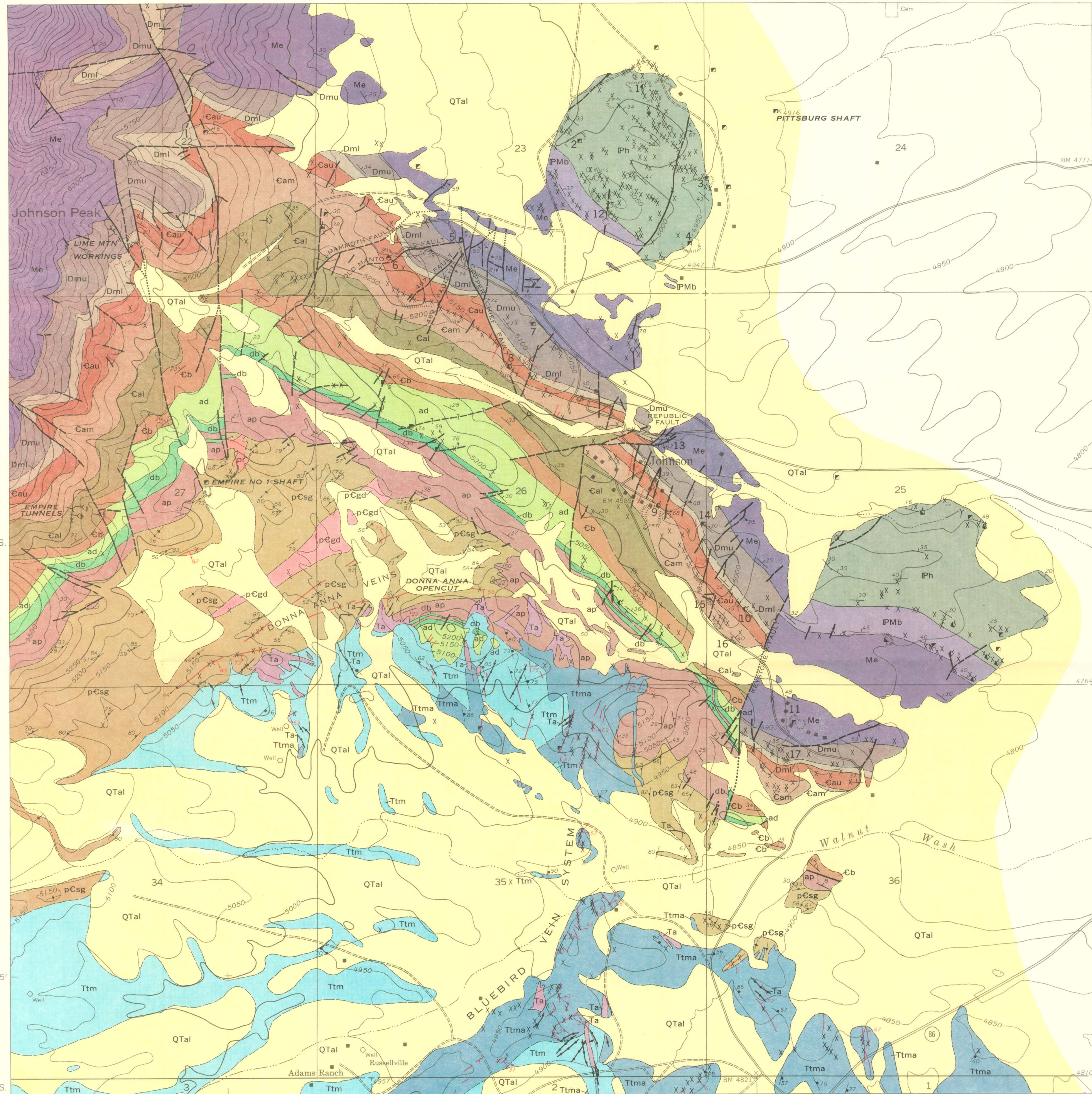


110°05'

R. 22 E.



EXPLANATION

- QTal Alluvium
- Ta Aplite
- Ttma, Ttm Texas Canyon quartz monzonite, altered phase
- Iph Horquilla limestone
- IPmb Black Prince limestone
- Me Escabrosa limestone
- Dmu, Dml Martin formation, upper and lower members
- Cau, Cam, Cal Abrego formation, upper, middle, and lower members
- Cb Bolsa quartzite
- db Diabase
- ad Dripping Spring quartzite, including Barnes conglomerate at base
- ap Pioneer shale, including Scanlan conglomerate at base
- pCsg Johnny Lyon granodiorite
- pr, pCsg Pinal schist, rhyolite

- Contact (dashed where approximately located)
- Fault, showing dip (dashed where approximately located; dotted where concealed; queried where doubtful)
- Strike and dip of beds
- Dipping Strike and dip of schistosity
- Vertical Strike and dip of schistosity and plunge of lineation
- Strike of vertical schistosity and plunge of lineation
- Strike and dip of joints carrying quartz
- Strike of vertical joints carrying quartz
- Strike and dip of joints carrying quartz, showing direction of plunge of striae
- Quartz vein (showing dip and direction of plunge of striae)
- Vertical shaft
- Inclined shaft
- Portal of tunnel
- Pit or opencut
- Dump

- PRINCIPAL SHAFTS
1. Peabody
  2. Black Prince
  3. Mackay
  4. Johnson Copper Development (Climax)
  5. Moore
  6. Mammoth
  7. Copper Chief vertical
  8. Copper Chief inclined
  9. Republic
  10. O. K.
  11. Keystone (Hagerman)
- MINOR WORKINGS
12. Copper Bell adit
  13. Copper King opencut
  14. Mayflower shaft
  15. Chicora workings
  16. Southern workings
  17. St. George opencut

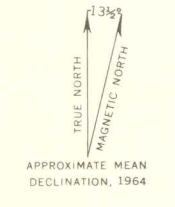
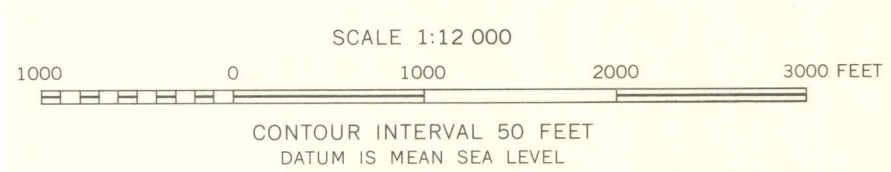
TERTIARY AND QUATERNARY  
TERTIARY(?)  
PENNSYLVANIAN  
MISSISSIPPIAN OR MISSISSIPPIAN  
DEVONIAN  
CAMBRIAN  
PRECAMBRIAN

CARBONIFEROUS

Base from U.S. Geological Survey Topographic quadrangle, Dragon, 15', 1941; mines, prospects and road modifications by J. R. Cooper, T. W. Amsden, and F. W. Farwell, 1945-49

Geology by J. R. Cooper, T. W. Amsden, and F. W. Farwell, 1945

GEOLOGIC MAP OF THE AREA NEAR JOHNSON, ARIZONA



INTERIOR—GEOLOGICAL SURVEY, WASHINGTON, D. C.—G61265