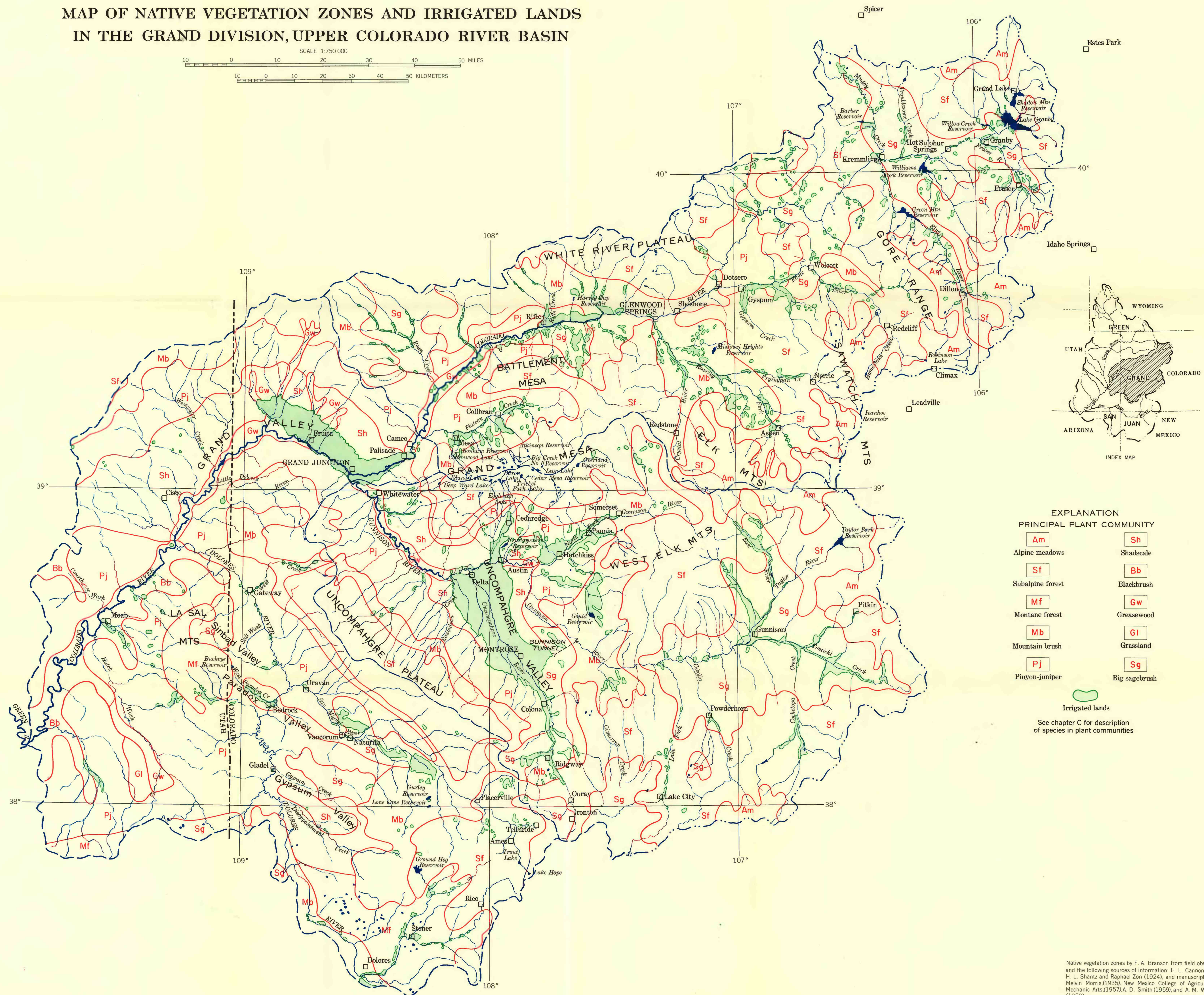
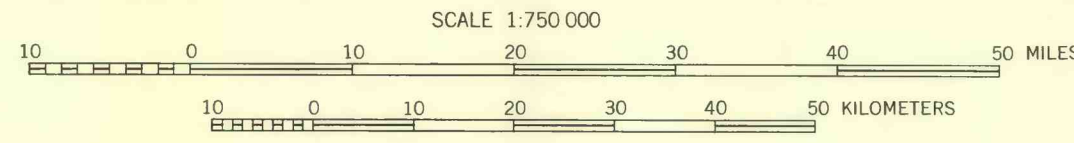


MAP OF NATIVE VEGETATION ZONES AND IRRIGATED LANDS
IN THE GRAND DIVISION, UPPER COLORADO RIVER BASIN



EXPLANATION

PRINCIPAL PLANT COMMUNITY

Am	Sh
Alpine meadows	Shadscale
Sf	Bb
Subalpine forest	Blackbrush
Mf	Gw
Montane forest	Greasewood
Mb	GI
Mountain brush	Grassland
Pj	Sg
Pinyon-juniper	Big sagebrush

Irrigated lands

See chapter C for description of species in plant communities

Streamnet and culture adapted from Sectional Aeronautical Charts, U.S. Coast and Geodetic Survey, Lambert conformal projection

Native vegetation zones by F. A. Branson from field observations and the following sources of information: H. L. Cannon (1960), H. L. Shantz and Raphael Zon (1924), and manuscript maps by Melvin Morris (1935), New Mexico College of Agriculture and Mechanic Arts (1957), A. D. Smith (1959), and A. M. Woodbury (1959).
Irrigated areas from maps accompanying "The Colorado River" (U.S. Dept. of the Interior, 1947)