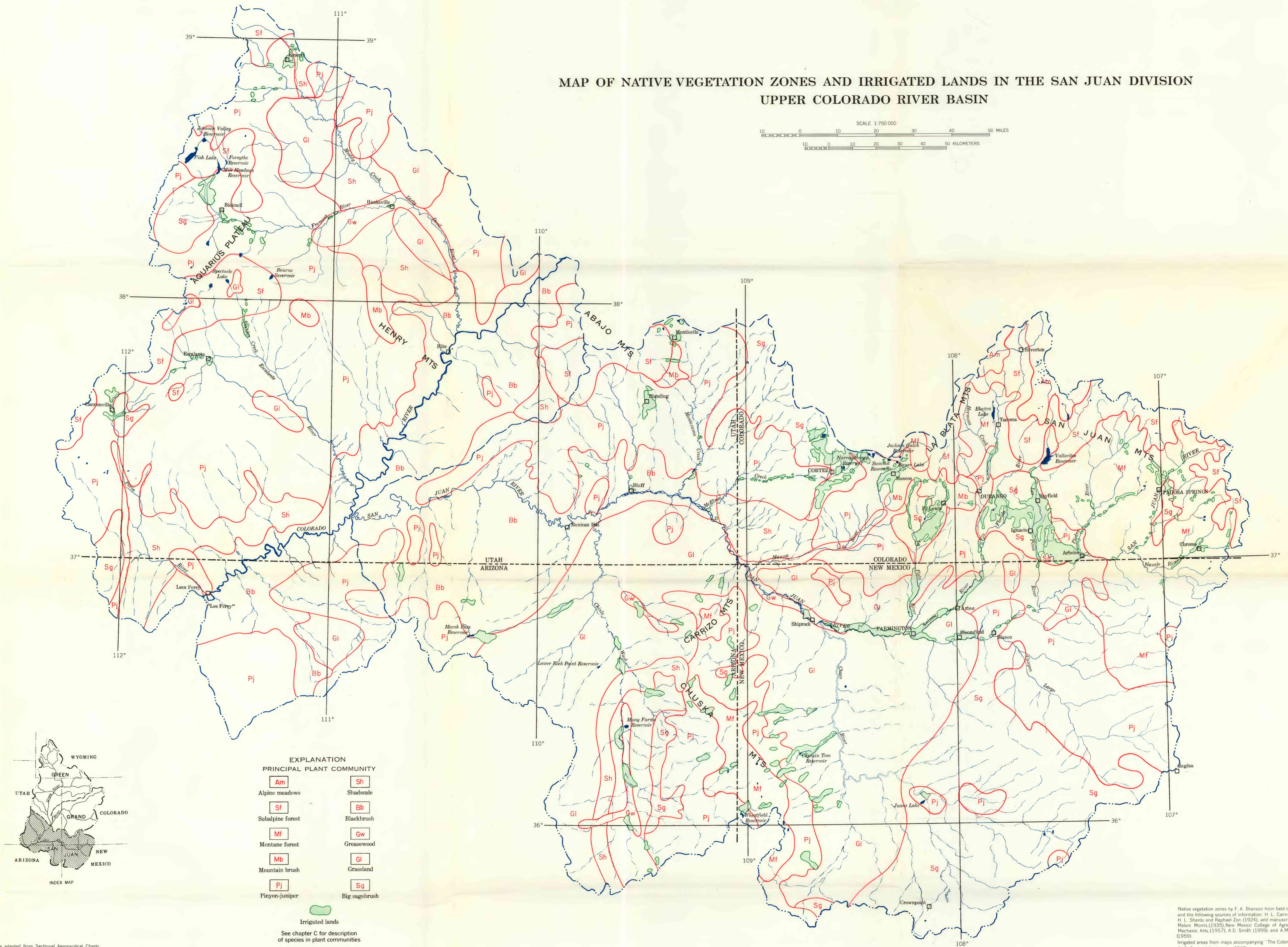


SCALE 1:750 000

10 0 10 20 30 40 50 MILES

10 0 10 20 30 40 50 KILOMETERS



Native vegetation zones by F. A. Branson from field observations and the following sources of information: H. L. Cannon (1960), H. L. Shantz and Raphael Zon (1924), and manuscript maps by Melvin Morris, (1935), New Mexico College of Agriculture and Mechanic Arts, (1957), A.D. Smith (1959), and A.M. Woodbury, (1959).

Irrigated areas from maps accompanying "The Colorado River", (U.S. Dept. of the Interior, 1947)