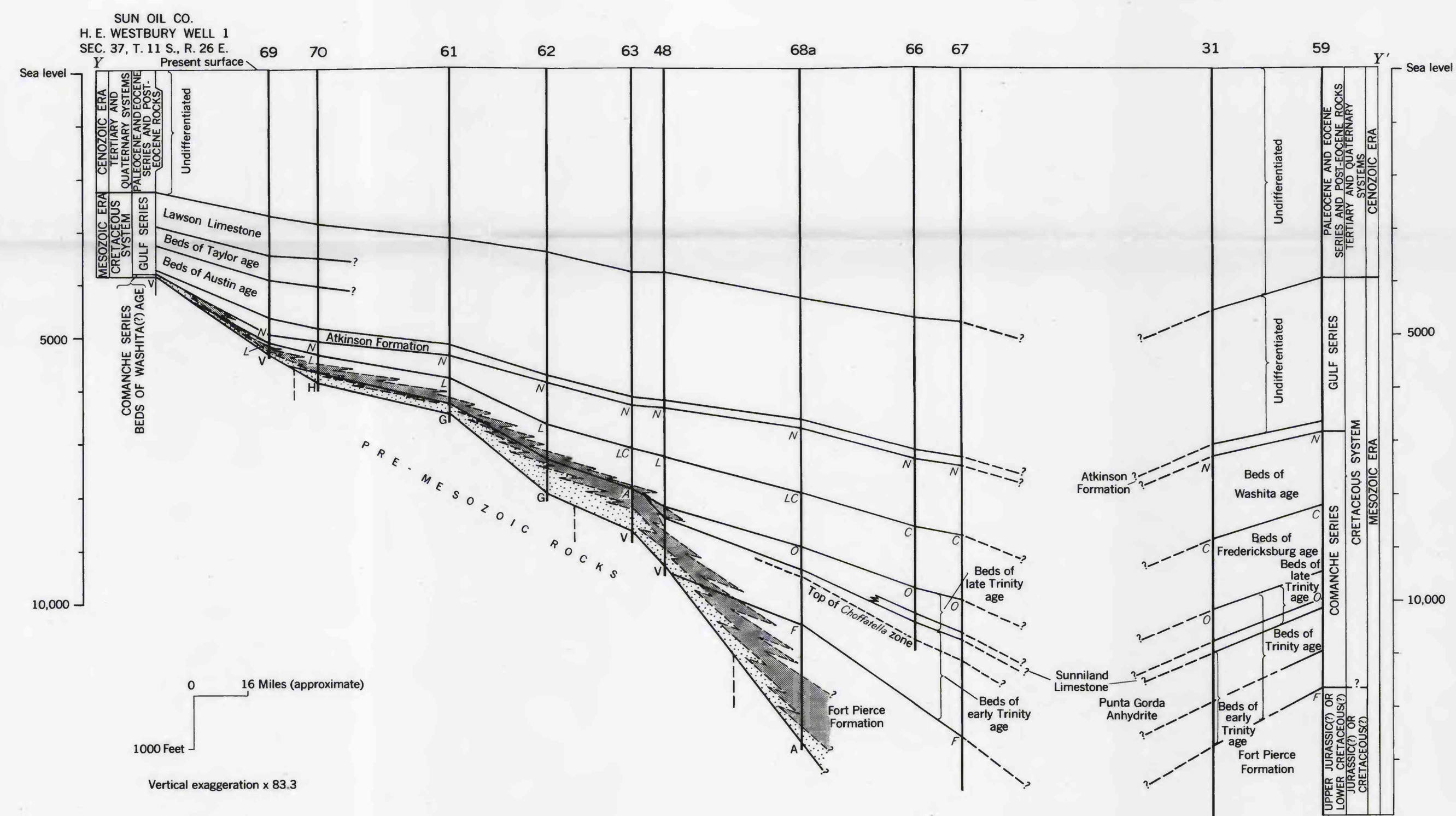
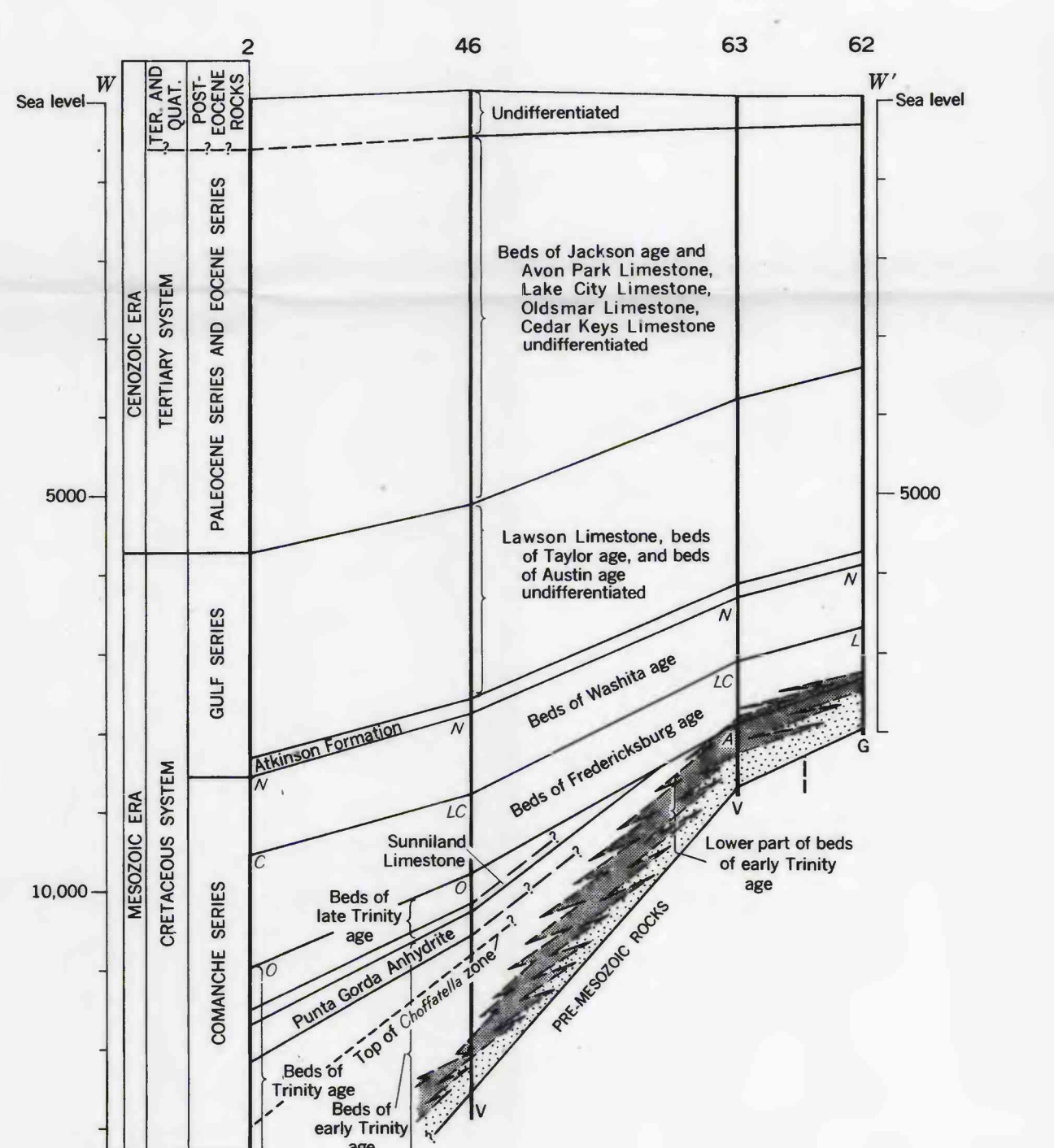
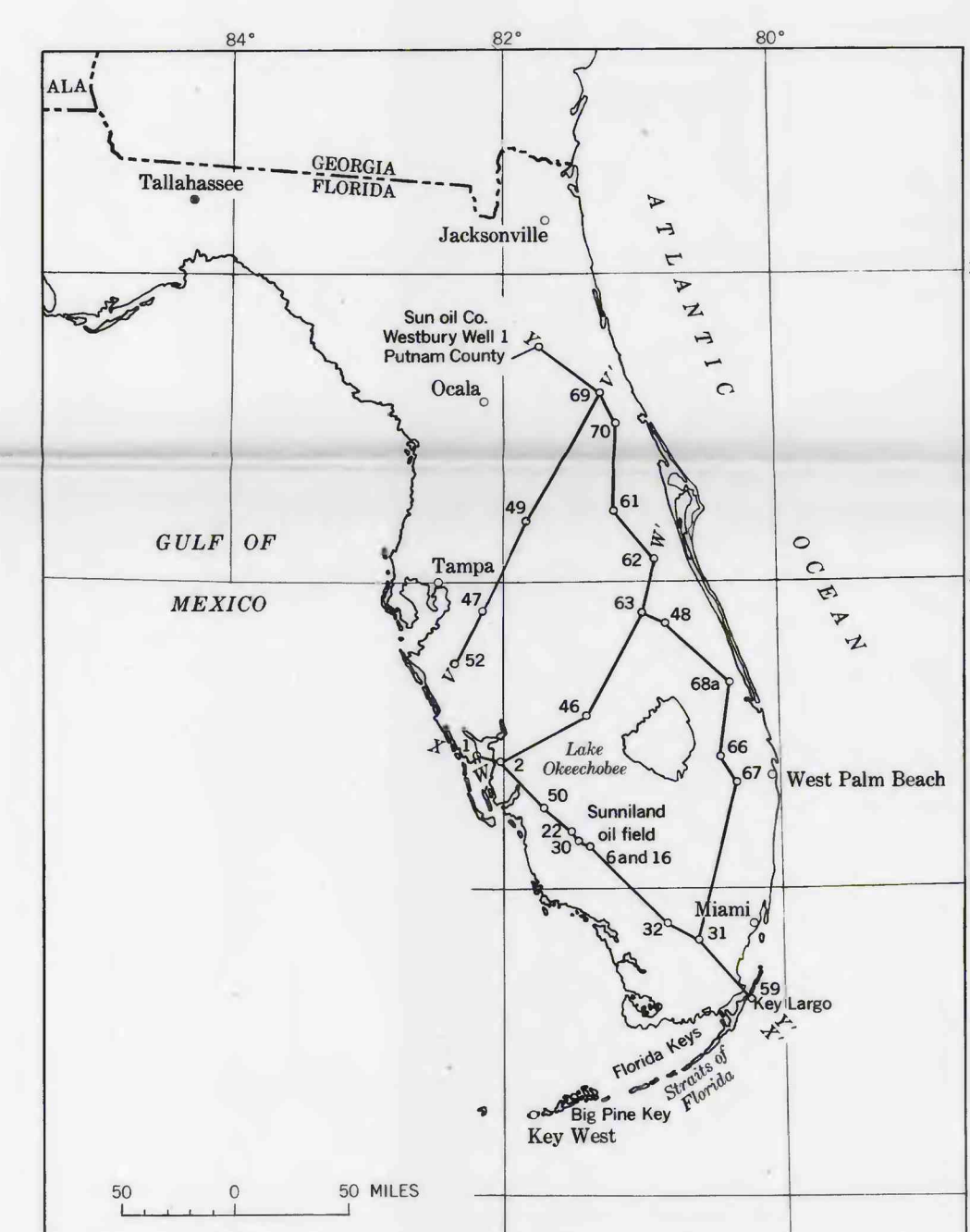


COMANCHE SERIES AND FORT PIERCE FORMATION		EXPLANATION		PALEONTOLOGIC SYMBOLS	
[Symbol]	Carbonate-evaporite facies	V	Early Paleozoic(?) or Precambrian(?) rhyolitic volcanic rocks	[Symbol]	DIAGNOSTIC FOSSILS
[Symbol]	Mixed facies	H	Precambrian(?) hornblende diorite	N	<i>Nummuloculina</i> limestone chiefly <i>N. heimi</i>
[Symbol]	Marginal clastic facies	G	Precambrian(?) granite	L	<i>Litula subgoodlandensis</i>
		A	Age unknown. Altered igneous rocks	C	<i>Coskinolinoides texanus</i>
				O	<i>Orbitolina minuta</i>
				A	<i>Atopochara trivialis</i>
				F	Fort Pierce microfauna
					HIGHEST OCCURRENCE
					Beds of Washita age
					Beds of Fredericksburg age
					Beds of Trinity age



STRUCTURE SECTIONS THROUGH WELLS ALONG LINES V-V', W-W', X-X', AND Y-Y' IN CENTRAL AND SOUTH FLORIDA