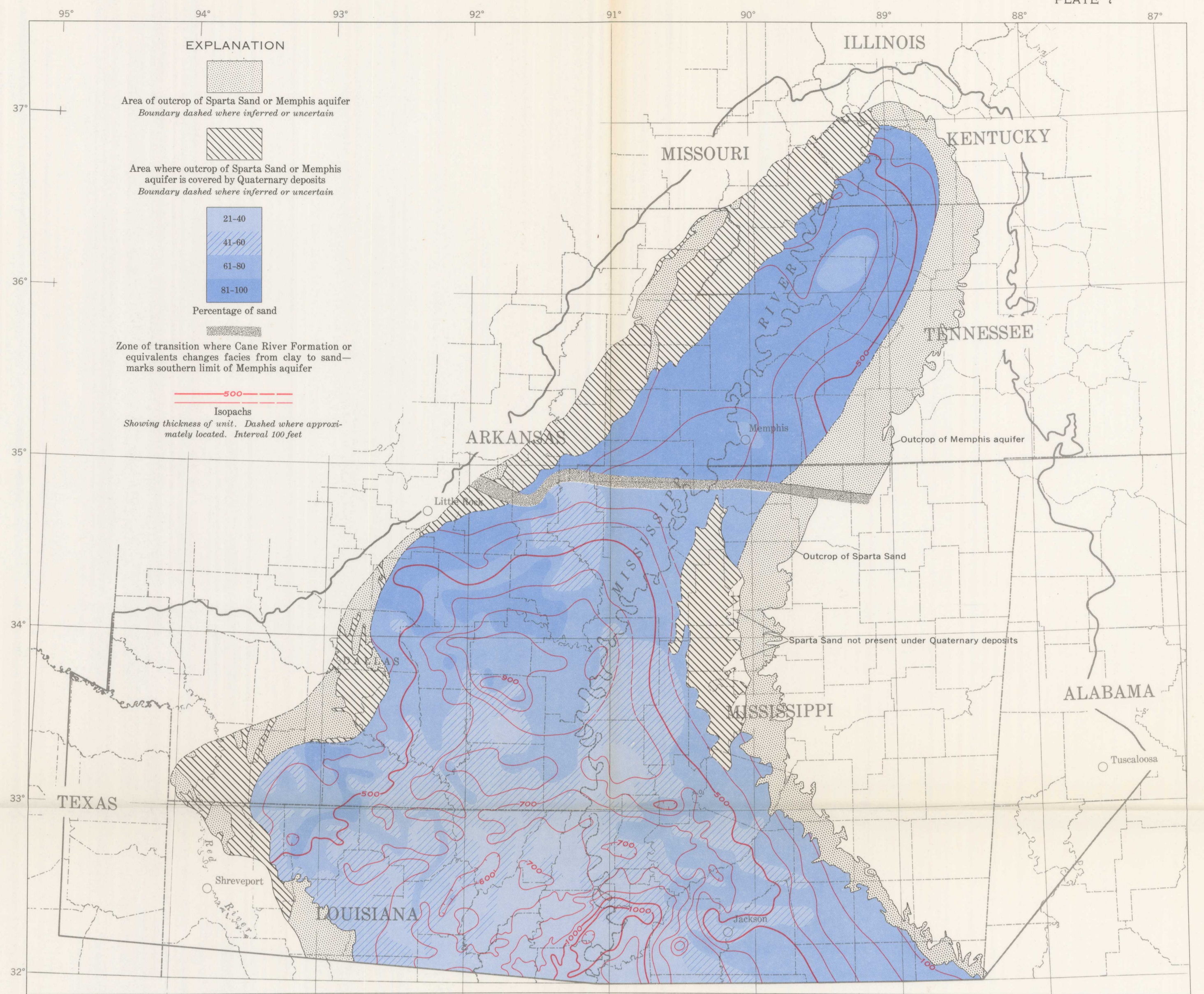
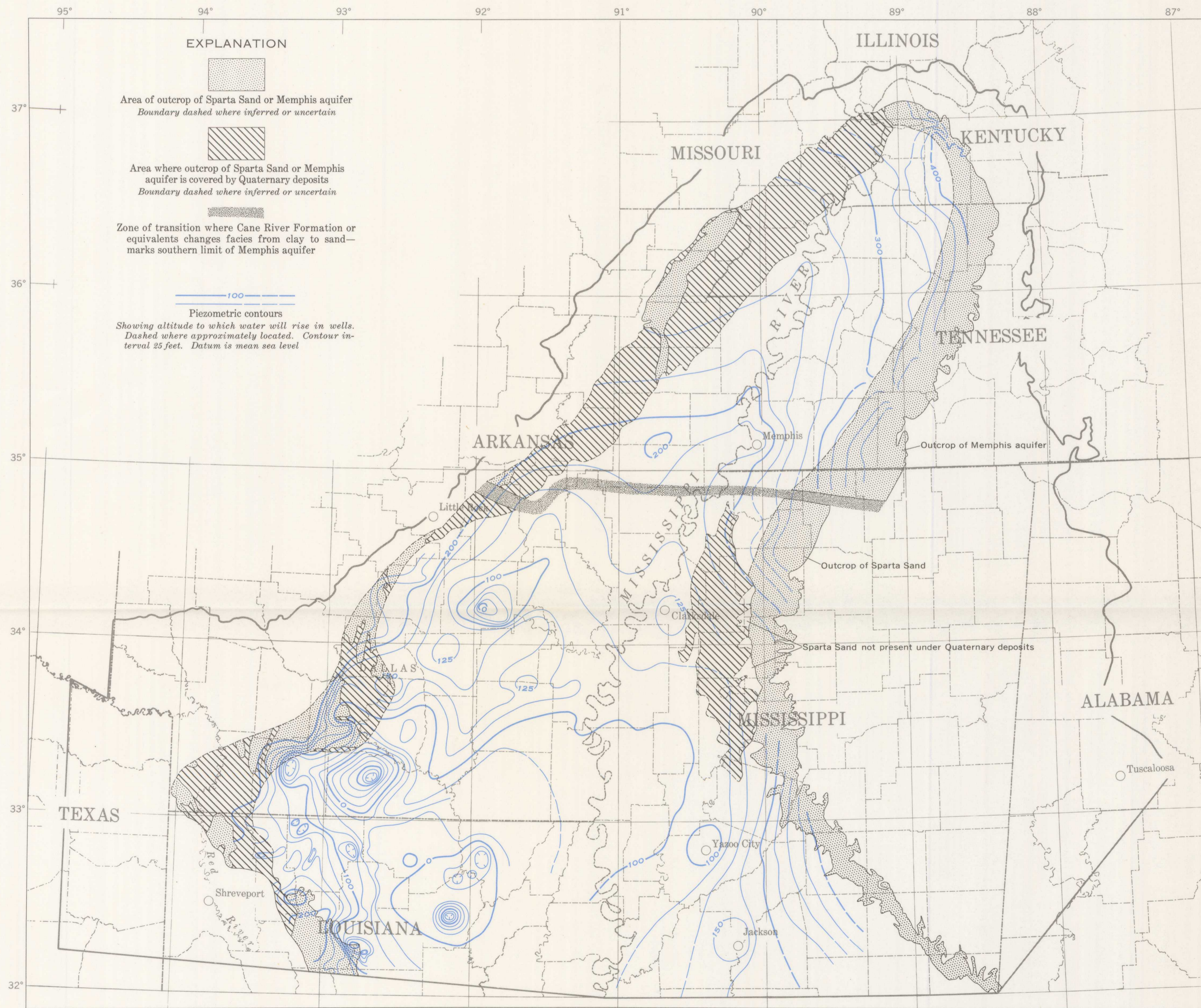


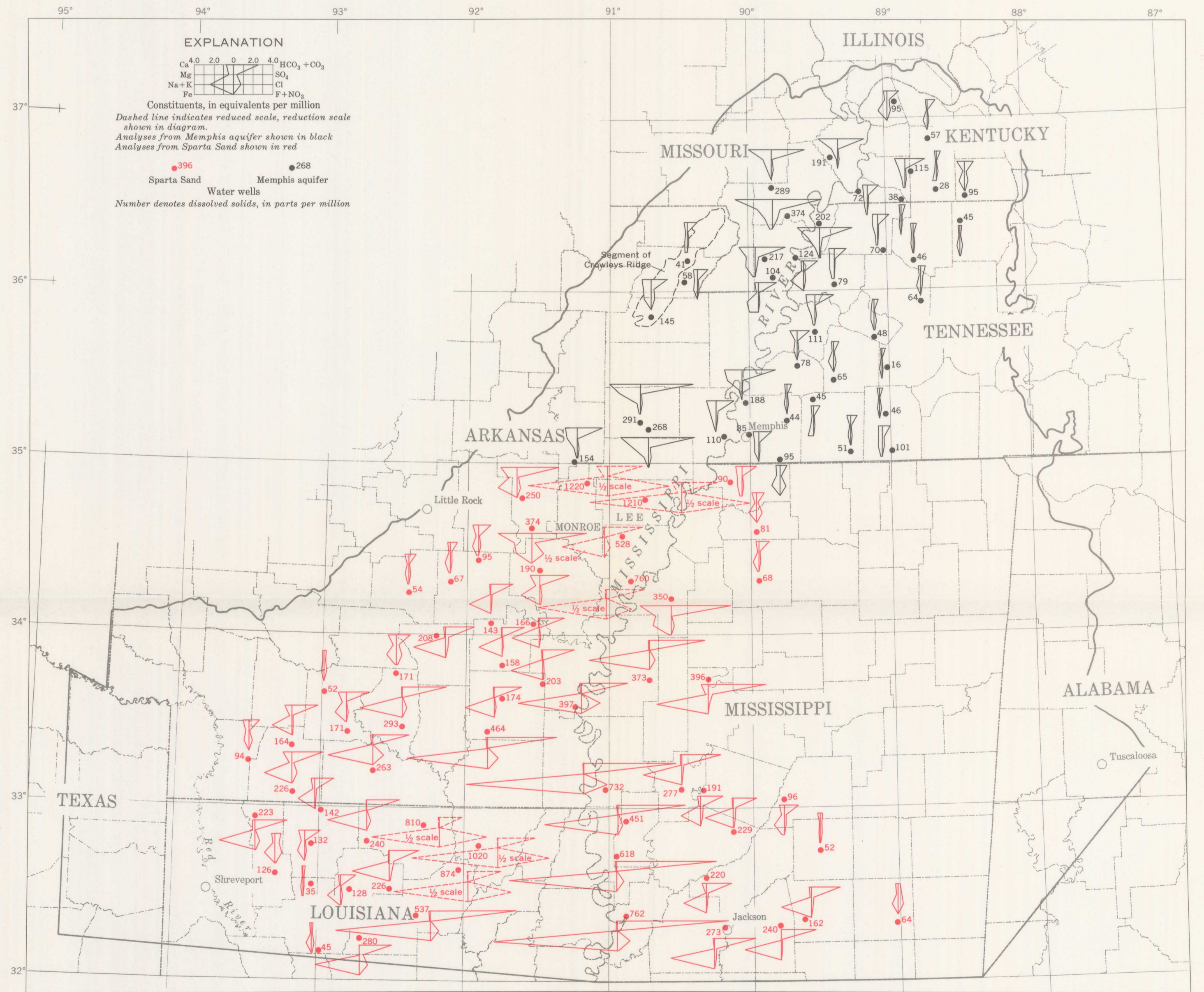
TOP OF UNIT AND AREAS OF WATER USE



THICKNESS OF UNIT AND PERCENTAGE OF SAND

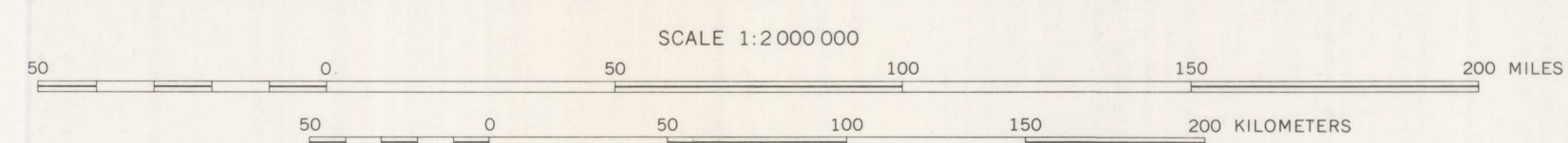


PIEZOMETRIC SURFACE



WATER QUALITY

GEOHYDROLOGIC MAPS OF THE SPARTA SAND (SOUTH OF APPROXIMATE LATITUDE 35° N) AND THE MEMPHIS AQUIFER (NORTH OF APPROXIMATE LATITUDE 35° N) IN THE MISSISSIPPI EMBAYMENT



INTERIOR—GEOLOGICAL SURVEY, WASHINGTON, D. C.—1967—W67027
Outcrop area modified from Alabama Geol. Survey (1926), Arkansas Geol. Survey (1929), Mississippi Geol. Society (1945), Missouri Div. Geol. Survey and Water Resources (1961), Roberts and Gildersleeve (1945), Rollo (1960), Tennessee Div. Geology (1933), and U.S. Geol. Survey (1932)