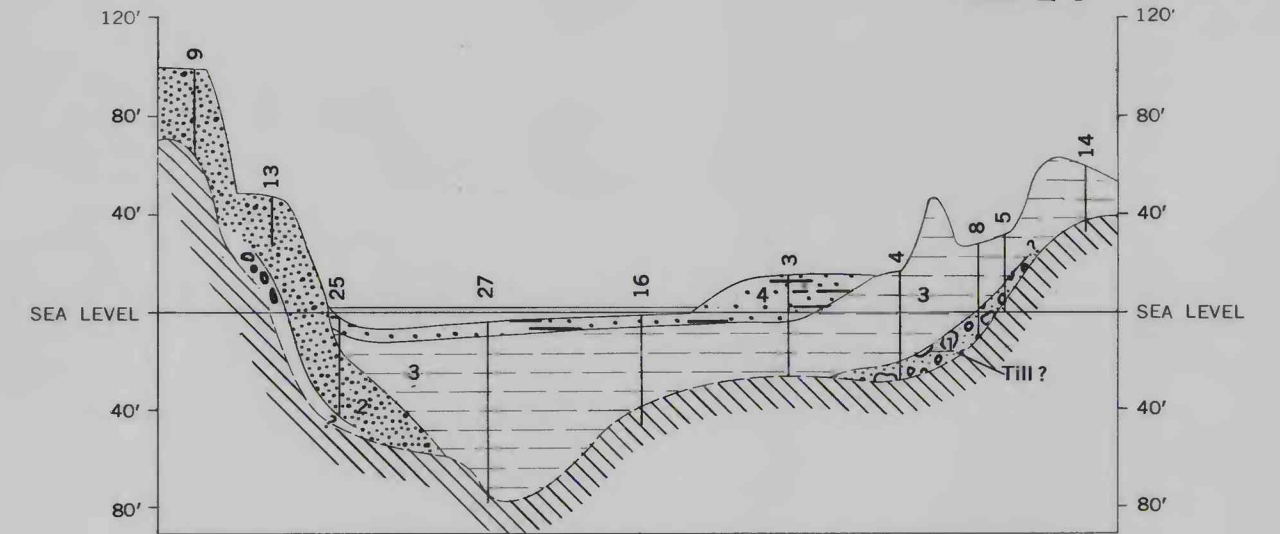
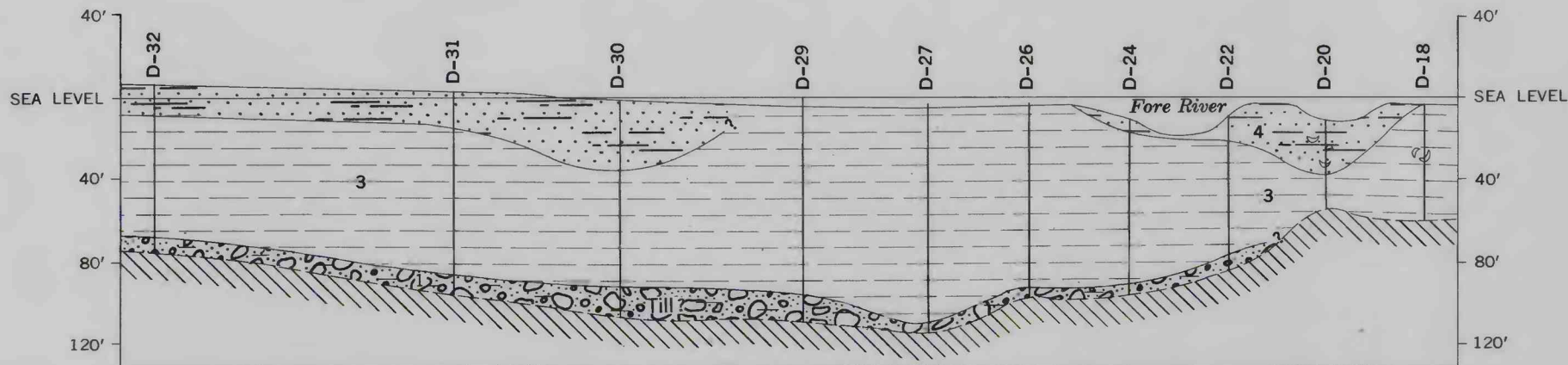


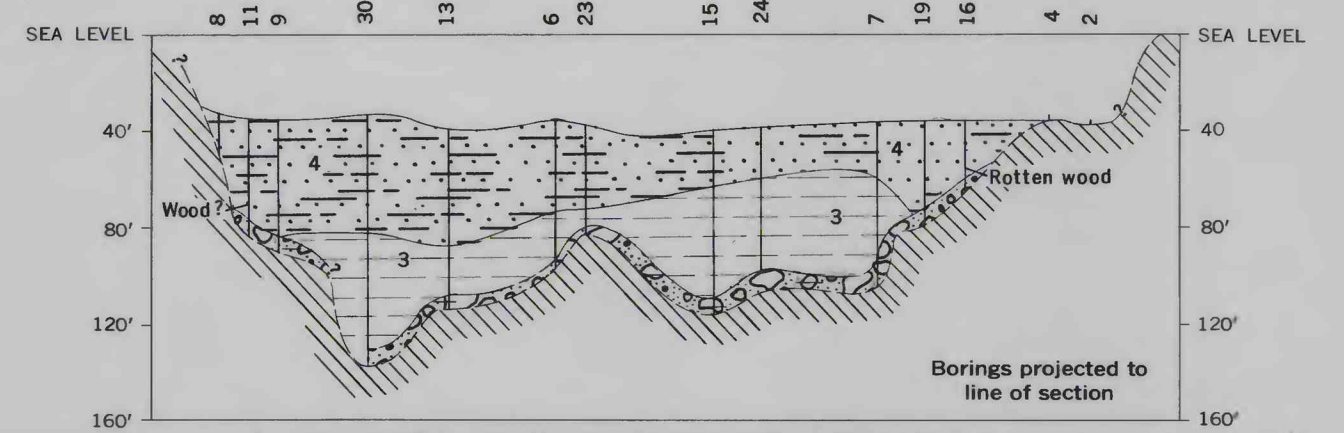
A. PRESUMPCOT BURIED VALLEY AT MAINE TURNPIKE NEAR PORTLAND, LOCALITY 7



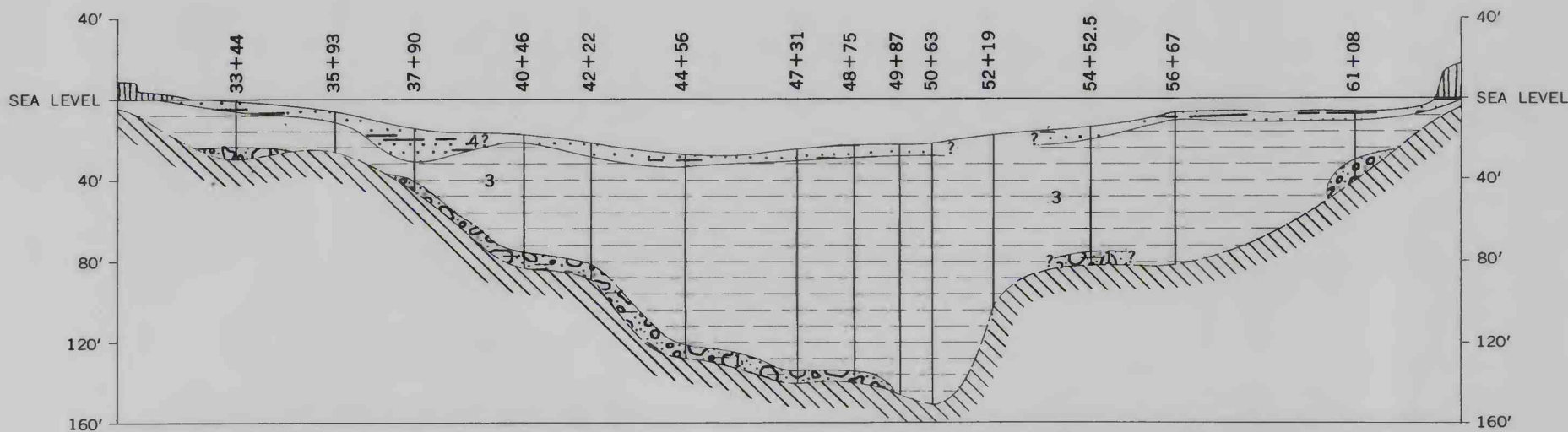
C. KENNEBEC RIVER AT MEMORIAL BRIDGE, US ROUTE 202, IN AUGUSTA, LOCALITY 9



B. PRESUMPCOT BURIED VALLEY AT VETERANS MEMORIAL BRIDGE OVER FORE RIVER, SOUTH PORTLAND, LOCALITY 8

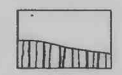

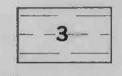


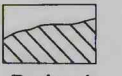


D. KENNEBEC RIVER AT US ROUTE 1 BETWEEN BATH AND WOOLWICH, LOCALITY 10



E. SHEEPSCOT RIVER AT US ROUTE 1 BRIDGE BETWEEN WISCASSET AND DAVIS ISLAND, LOCALITY 11

EXPLANATION

-  Fill
-  Estuarine and fluvial deposits
Mud, soft mud, or silt; fluvial sand and gravel along Kennebec River may be outwash; scattered shell fragments, some wood
-  Marine clay
Blue or gray clay and silty clay; locally contains sand in basal part
-  Outwash
Fine to coarse sand, some silt, and, at places, gravel in various amounts
-  Till
Mainly compact gravel or sand and gravel; locally contains clay. Described as "hardpan" in some borings
-  Bedrock
Bedrock surface based mainly on refusal depths

Numbers identify units described in text; queried names are used where identification is uncertain

Sections are oriented about southwest-northeast. Locality numbers are those given in figure 1

CROSS SECTIONS OF BEDROCK VALLEYS ALONG THE MAINE COAST

