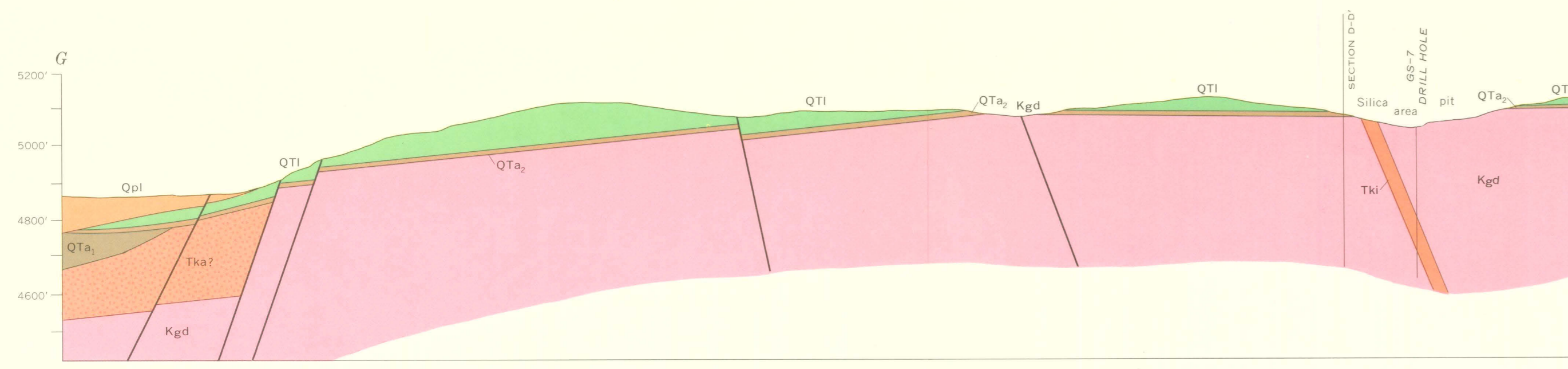
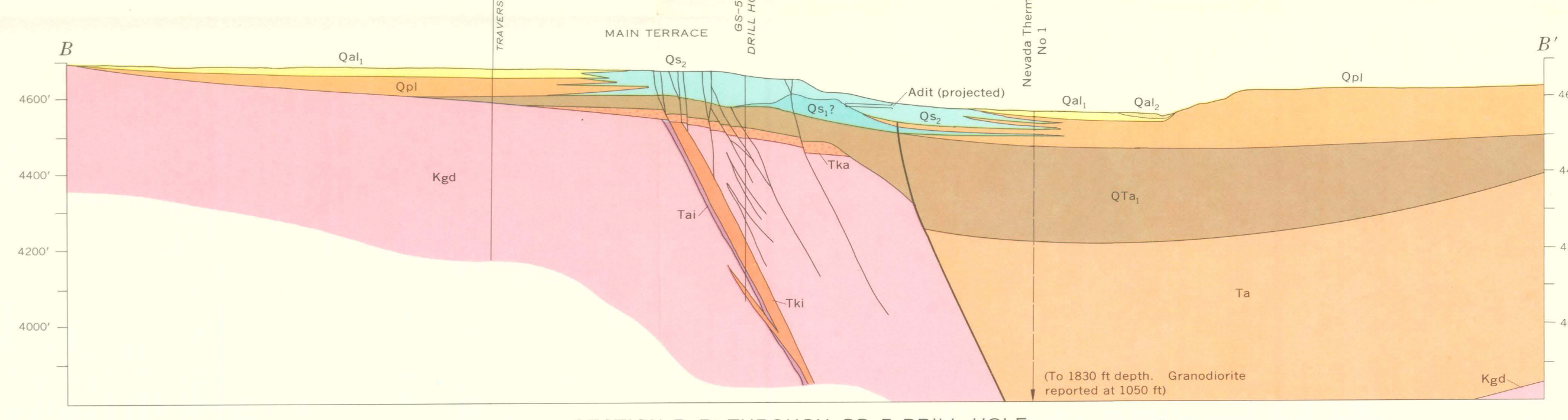


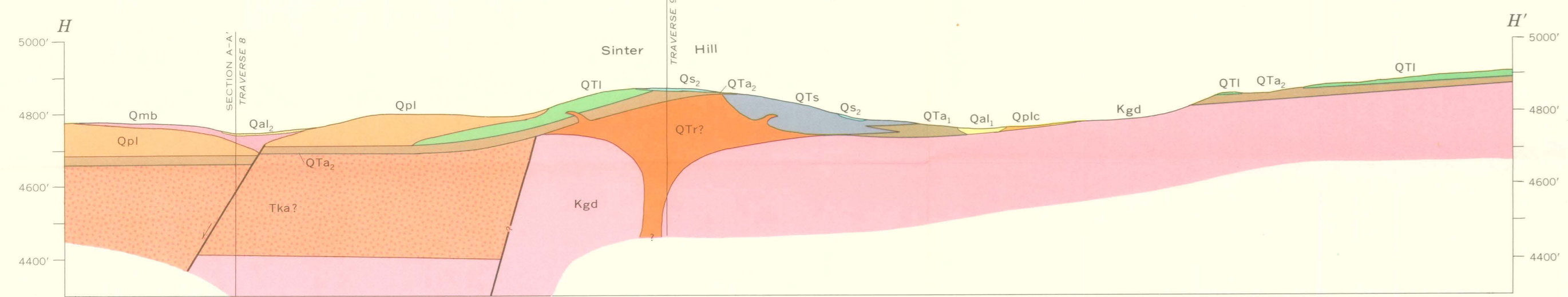
SECTION A-A' ALONG TRAVERSE 8



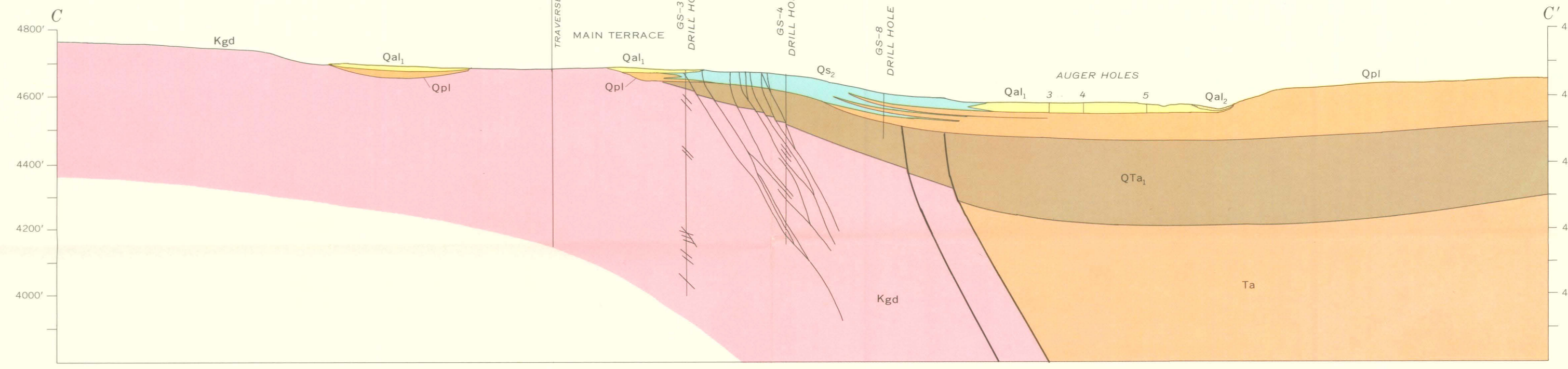
SECTION G-G' THROUGH GS-7 DRILL HOLE



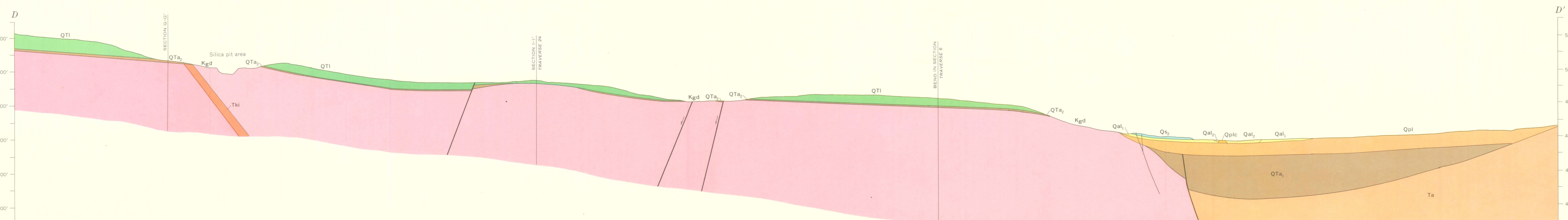
SECTION B-B' THROUGH GS-5 DRILL HOLE



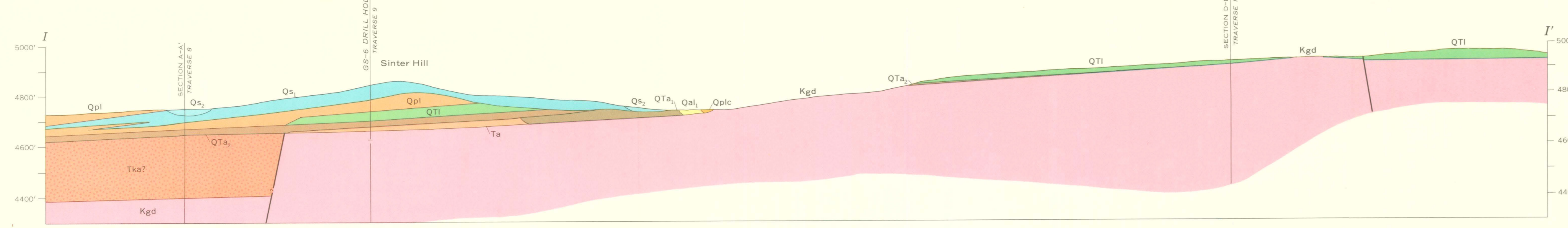
SECTION H-H' THROUGH WEST PART OF SINTER HILL



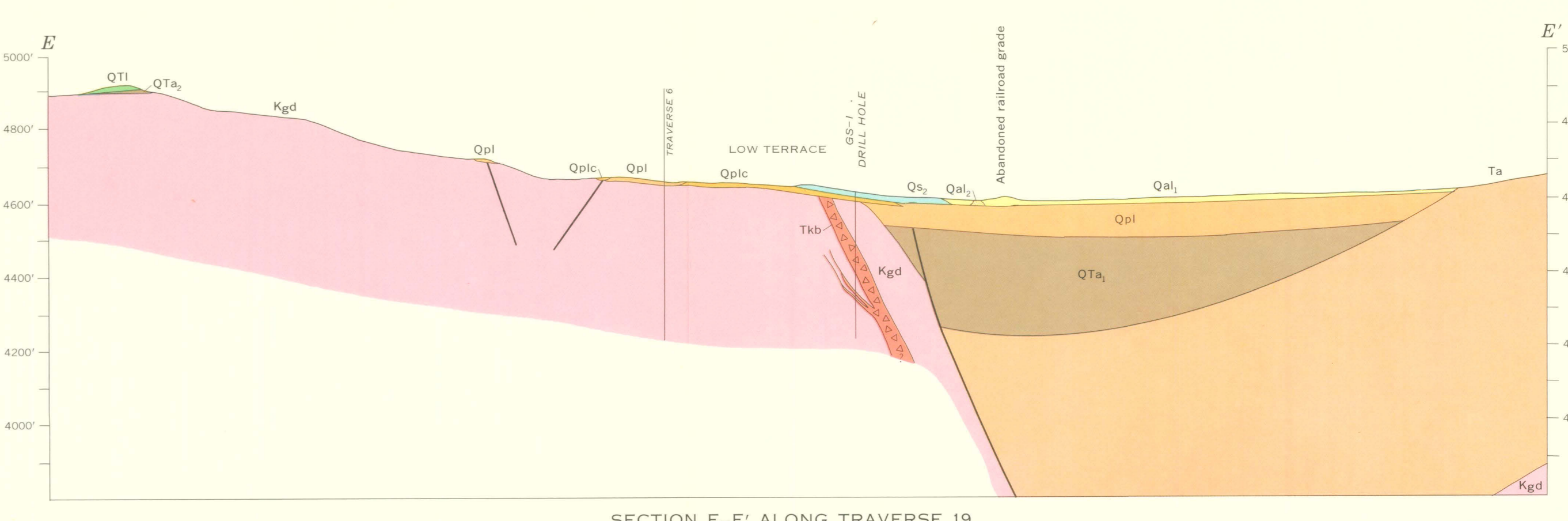
SECTION C-C' ALONG TRAVERSE 3



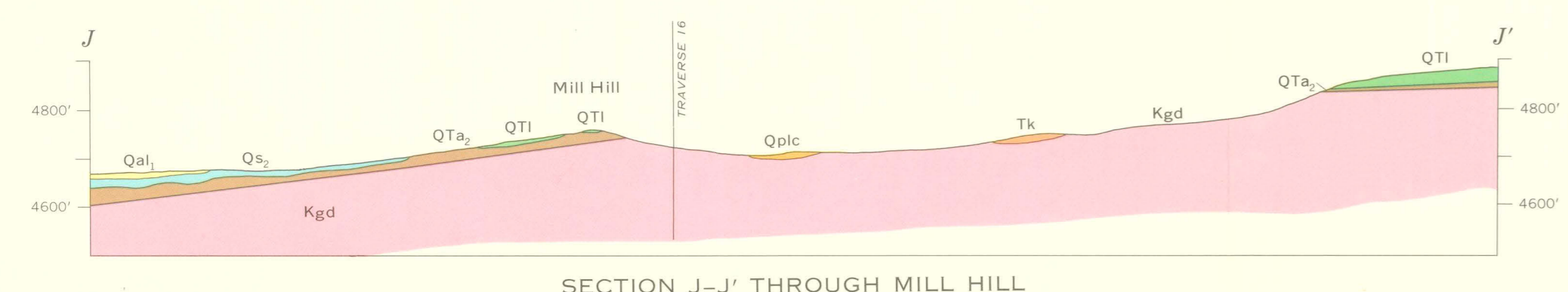
SECTION D-D' ALONG TRAVERSE 1



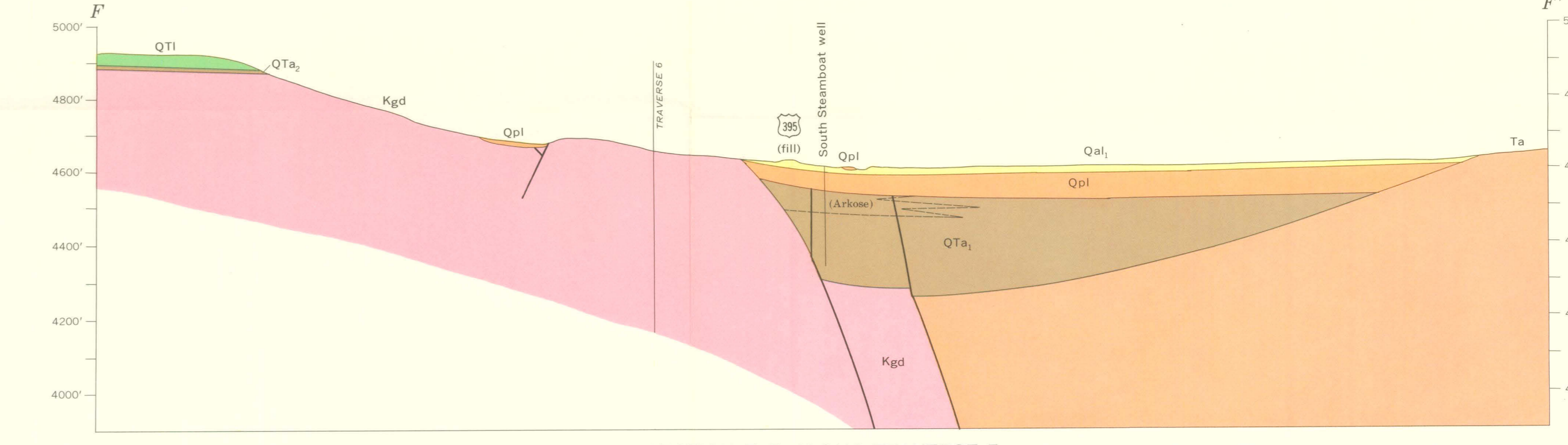
SECTION I-I' ALONG TRAVERSE 24



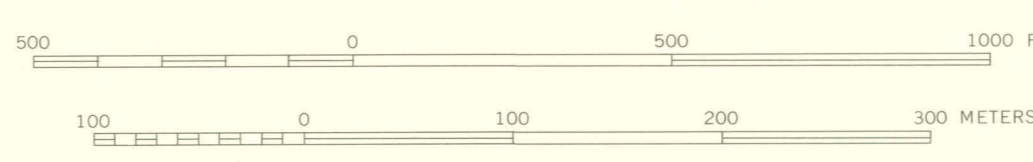
SECTION E-E' ALONG TRAVERSE 19



SECTION J-J' THROUGH MILL HILL



SECTION F-F' ALONG TRAVERSE 5



STRUCTURE SECTIONS OF THE STEAMBOAT SPRINGS THERMAL AREA, WASHOE COUNTY, NEVADA

Section lines and explanation shown on plate 1
GEOLOGICAL SURVEY, WASHINGTON, D. C. 20508
Geology by Donald E. White