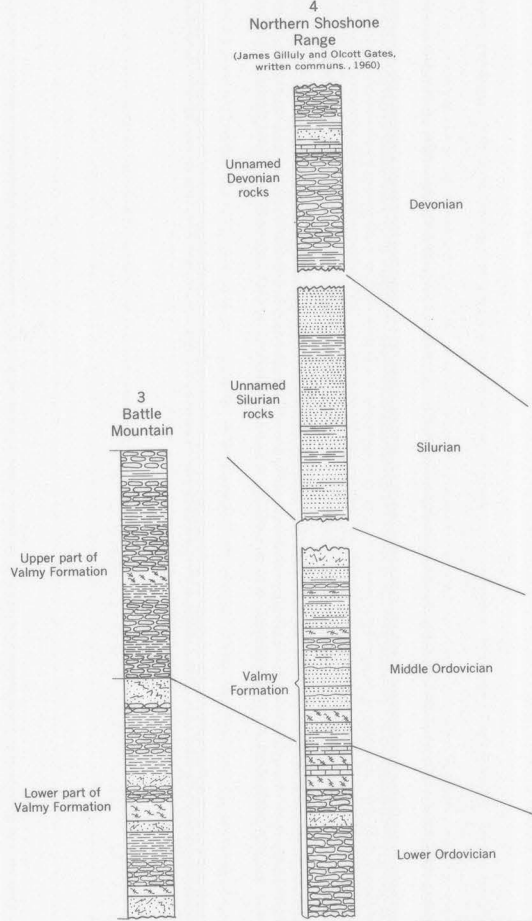
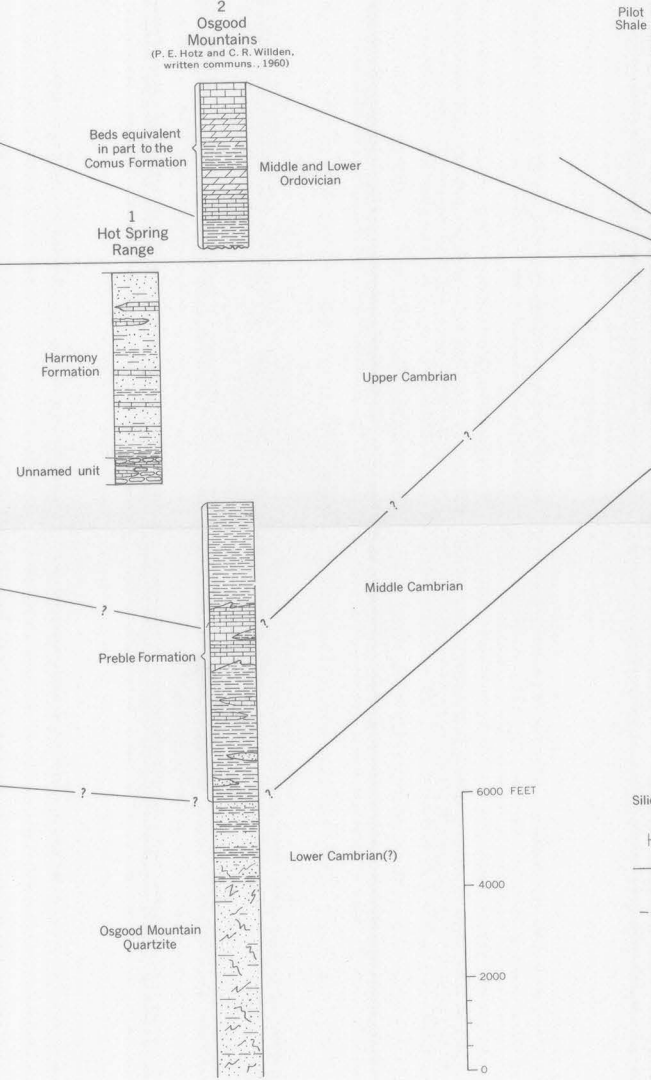


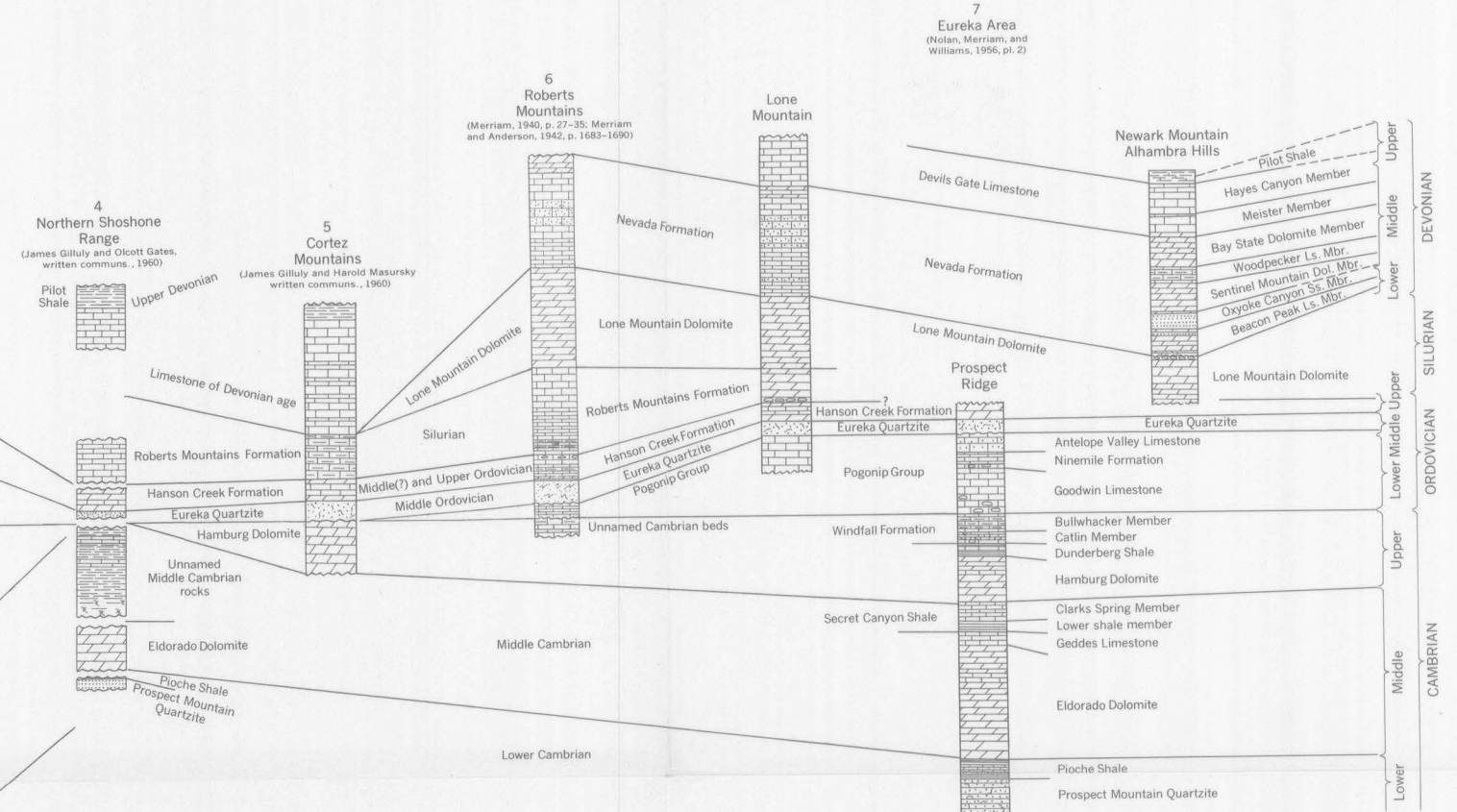
SILICEOUS AND VOLCANIC ASSEMBLAGE



TRANSITIONAL ASSEMBLAGE

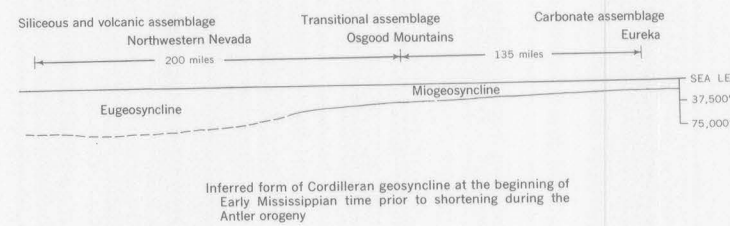
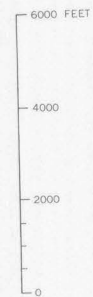
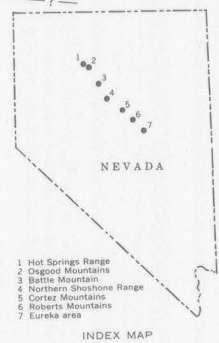
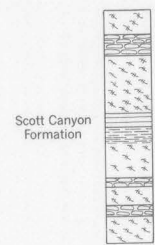
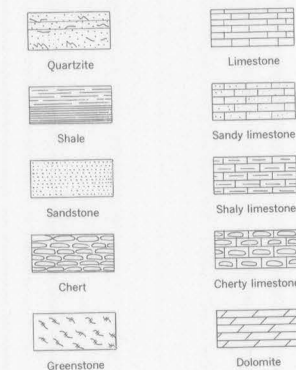


CARBONATE ASSEMBLAGE



Note: Sections are arranged in relative positions of original deposition. Datum is base of Ordovician rocks

EXPLANATION



Inferred form of Cordilleran geosyncline at the beginning of Early Mississippian time prior to shortening during the Antler orogeny

STRATIGRAPHIC SECTIONS OF PRE-LATE MISSISSIPPIAN ROCKS IN NORTH-CENTRAL NEVADA