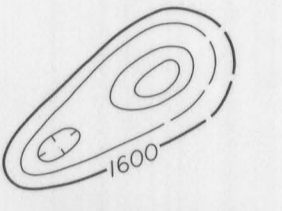


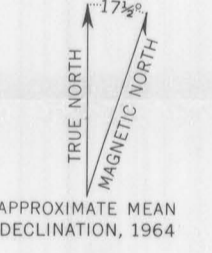
EXPLANATION



Magnetic contours
Contours show the total intensity magnetic field of the earth relative to an arbitrary datum. Contour intervals 20 and 100 gammas. Contours hachured to indicate closed area of lower magnetic intensity, dashed where data incomplete

Measured maximum or minimum intensity within closed magnetic high or closed magnetic low

Flight path
Dashes show location and spacing of data



APPROXIMATE MEAN DECLINATION, 1964

Base map by Topographic Division
U.S. Geological Survey, 1943

INTERIOR—GEOLOGICAL SURVEY, WASHINGTON, D. C.—1964—G63074
Aeromagnetic survey flown by W. J. Dempsey
and M. E. Hill at an approximate elevation
of 1000 feet above ground, 1947

AEROMAGNETIC MAP OF THE ANTLER PEAK QUADRANGLE, NEVADA

