

EXPLANATION

Miocene	Ta	Arikaree Formation Tuffaceous sandstone and volcanic ash
	Tls	Pre-Arikaree Landslide Landslide blocks contain rocks of Hell Creek, Fort Union, Chadron, and Brule Formations
Oligocene	Tc	Chadron Formation Bentonitic claystone, siltstone, and conglomerate
	Tk	Fort Union and Hell Creek Formations undifferentiated Claystone and lenticular sandstone, shale, and lignite
Upper Cretaceous and Paleocene	Kfh	Fox Hills Sandstone Marine sandstone and sandy shale
	Kp	Pierre Shale Marine shale and claystone

Contact
Dashed where approximately located;
short dashed where inferred

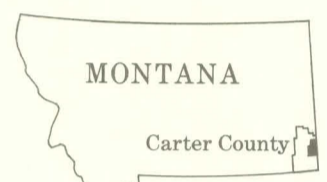
Contours
Showing altitude of base of Arikaree Formation.
Dashed where restored. Interval 50 feet. Datum is mean sea level. Vertical control by single base altimetry

▲
Altitude control point
AMS 4130
Army Map Service elevation, in feet

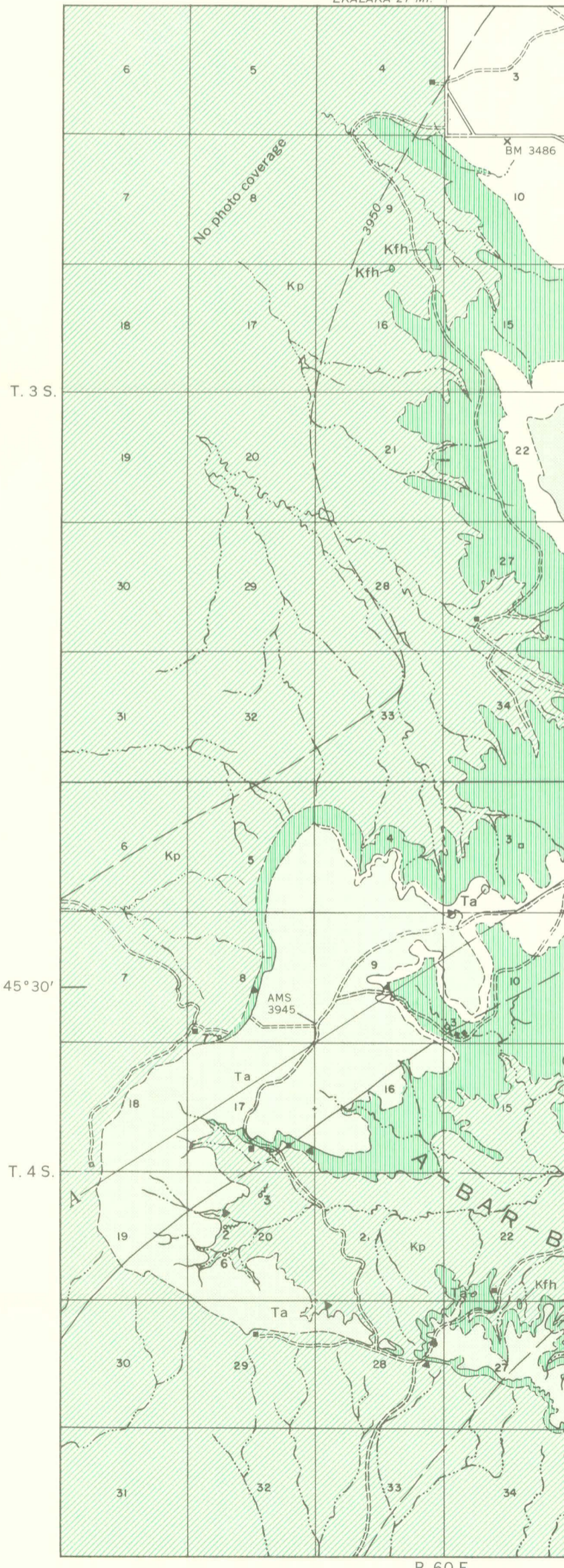
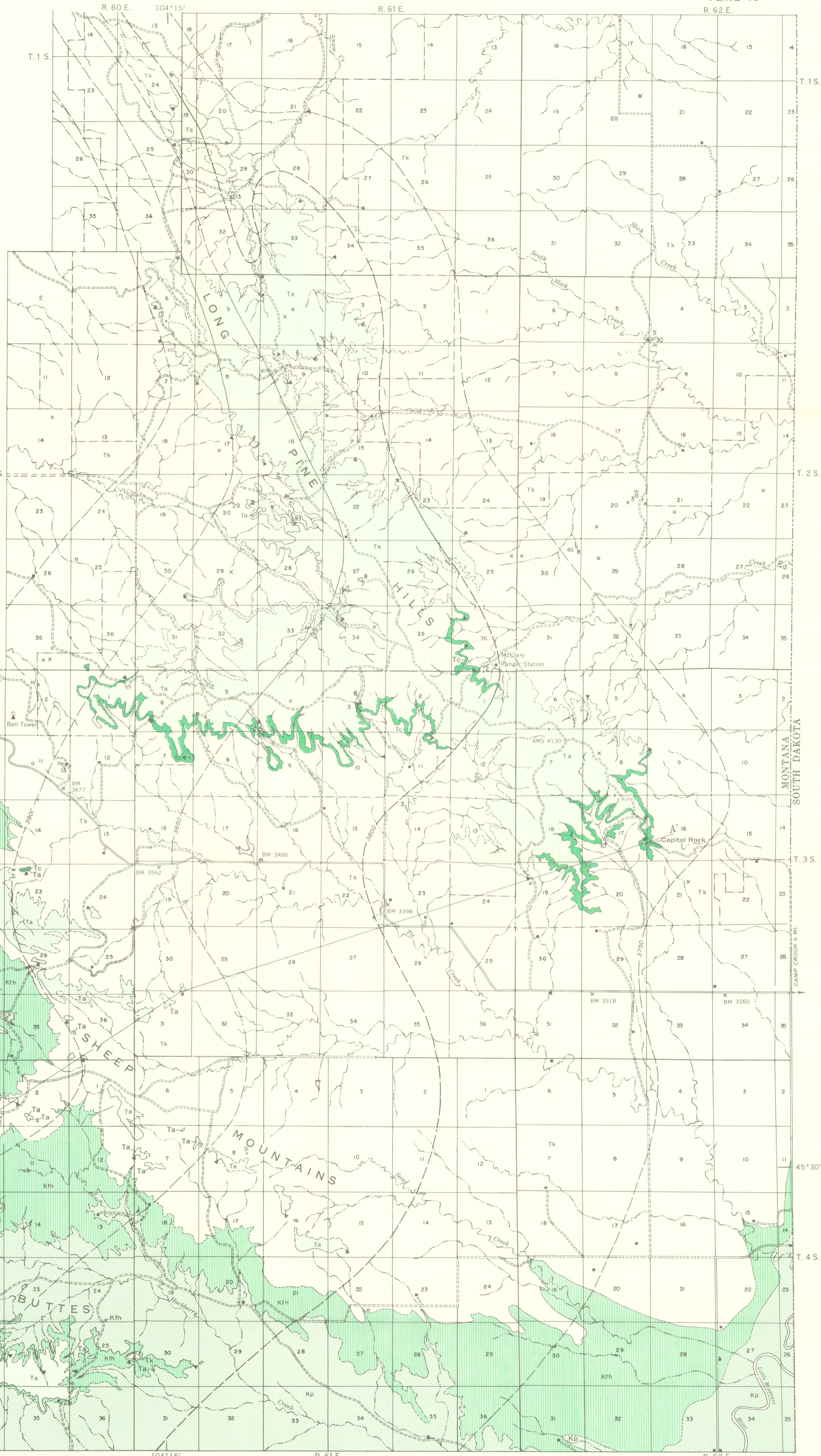
x
Uranium occurrences
pB 12 30W
Spring Water well

Number is uranium content, in parts per billion.
Letter B indicates water sample analyzed for selected trace elements (tables 9 and 10)

— — — — —
Custer National Forest Boundary

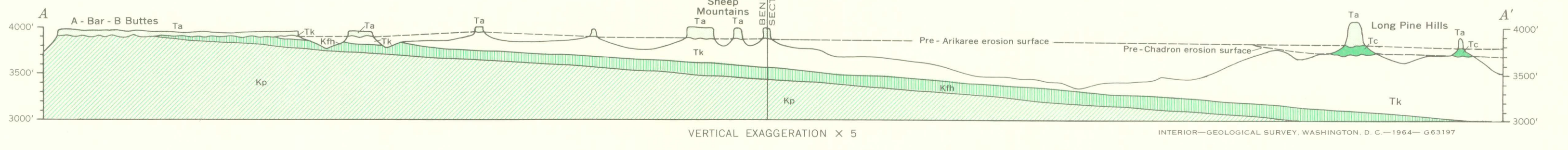


MAPPED AREA
EKALAKA 27 MI.



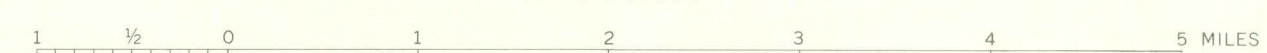
Base from Bureau of Land Management plats

Geology mapped in 1955



GEOLOGIC MAP AND SECTION OF LONG PINE HILLS, CARTER COUNTY, MONTANA

SCALE 1:63 360



DATUM IS MEAN SEA LEVEL