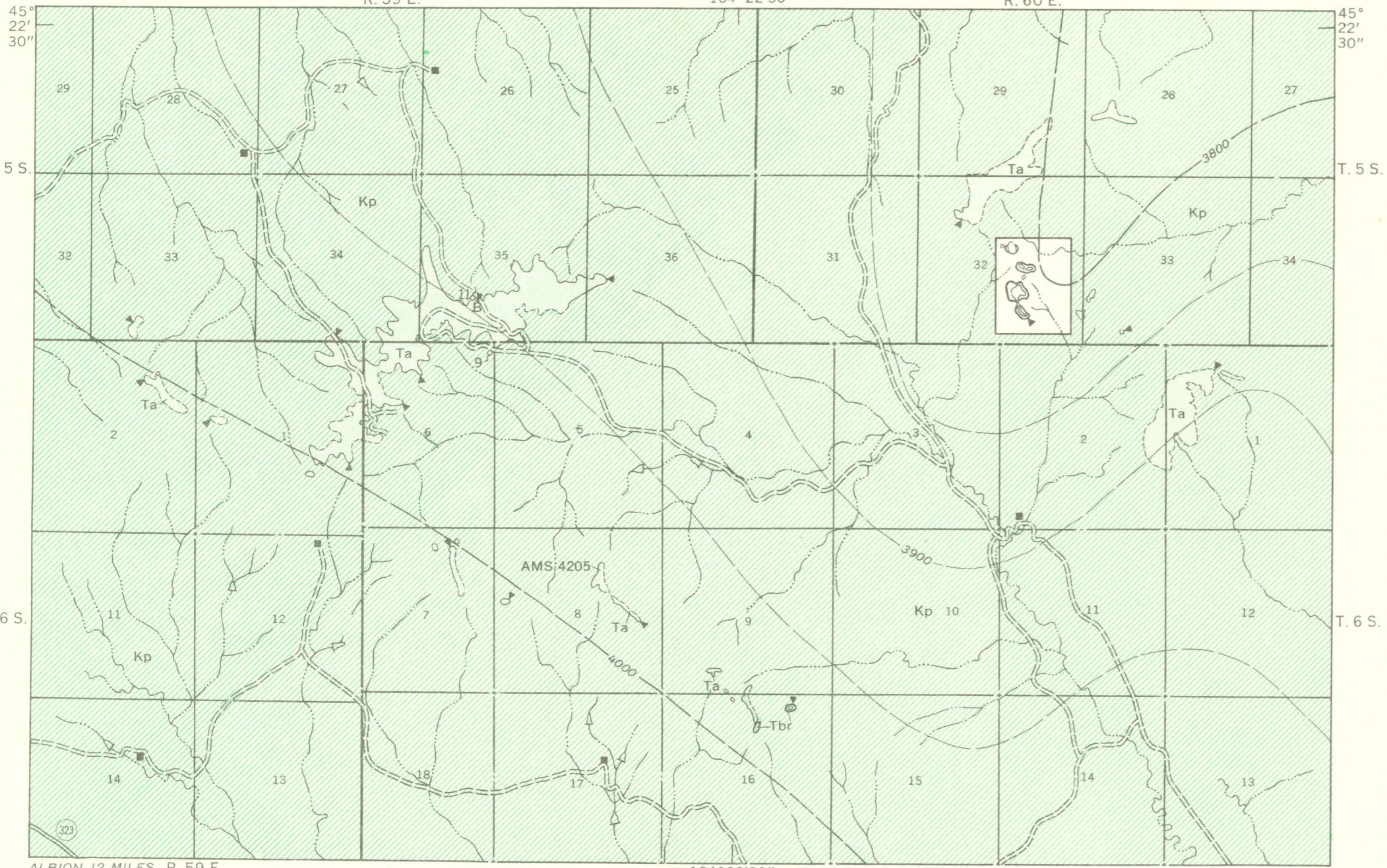


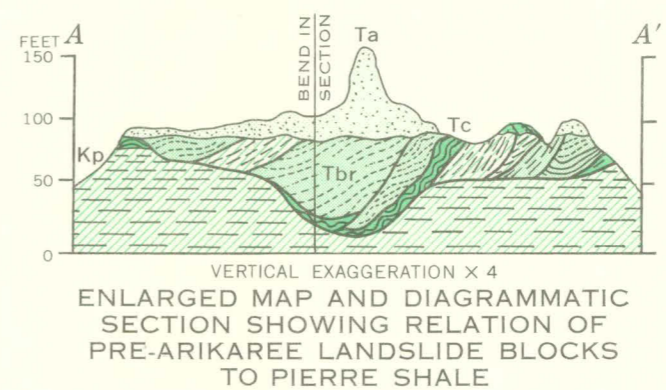
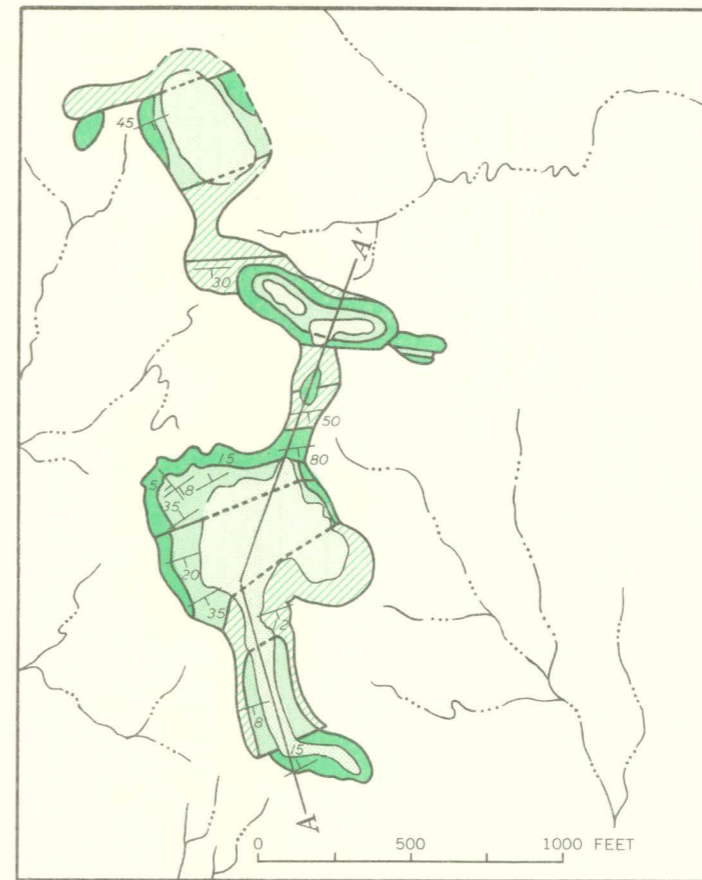
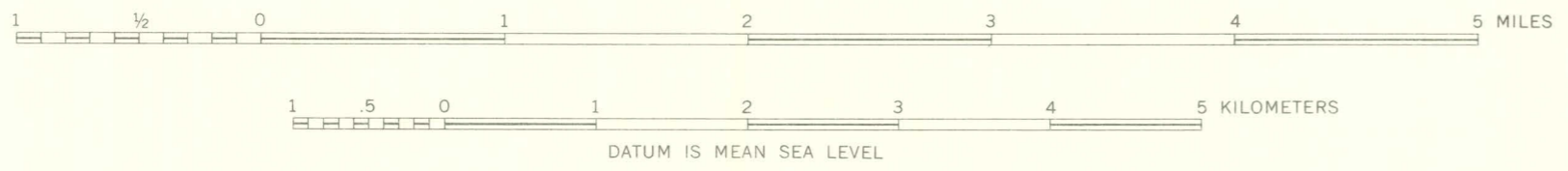
R. 59 E. 104° 22' 30" R. 60 E.



ALBION 12 MILES R. 59 E. 104° 22' 30" R. 60 E. INTERIOR—GEOLOGICAL SURVEY, WASHINGTON, D. C.—1964—G 63197
Base from Bureau of Land Management plats Geology mapped in 1955

GEOLOGIC MAP OF THE FINGER BUTTES, CARTER COUNTY, MONTANA

SCALE 1:48 000



EXPLANATION

- Ta
Arikaree Formation
Tuffaceous sandstone and volcanic ash
- Tbr
Brule Formation
Tuffaceous claystone, siltstone, and sandstone
- Tc
Chadron Formation
Bentonitic claystone and sandstone
- Kp
Pierre Shale
Marine shale and claystone

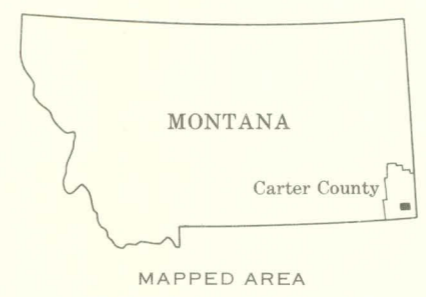
- Contact
Dashed where approximately located
- Boundary of landslide
Dotted where concealed
- Strike and dip of beds in landslides
- Contours
Showing altitude of base of Arikaree Formation Dashed where restored. Interval 50 feet. Datum is mean sea level. Vertical control by single base altimetry

Miocene
Oligocene
White River Group
Upper Cretaceous

TERTIARY
CRETACEOUS

▲ AMS 4205
Altitude control point Army Map Service elevation in feet

11_d
Spring
Number is uranium content, in parts per billion. Letter B indicates sample analyzed for selected trace elements (table 9).



MAPPED AREA