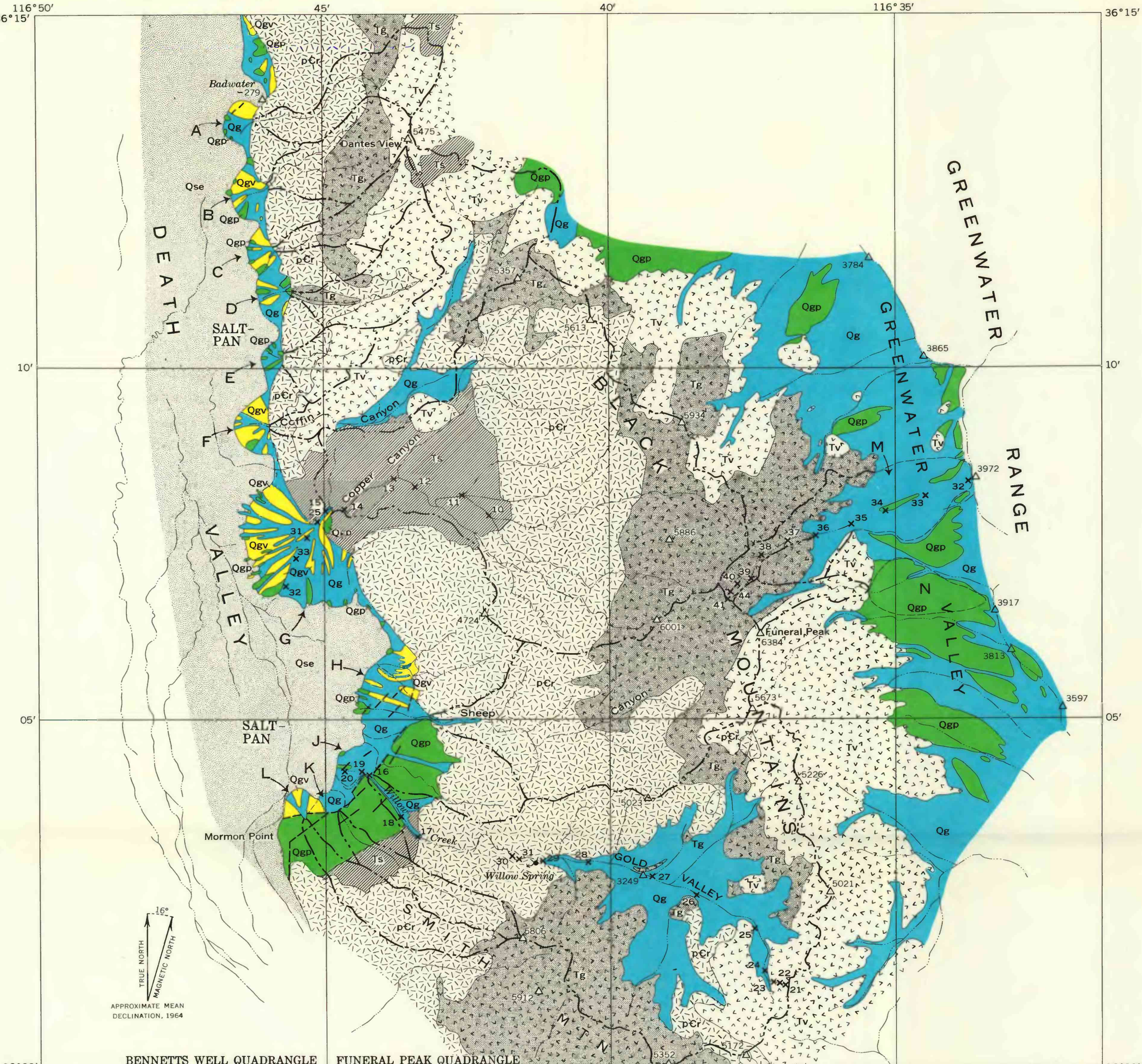
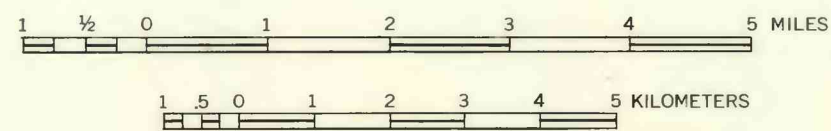


EXPLANATION

DEATH VALLEY		GREENWATER VALLEY	
Qse	Qg	Qg	Qgp
Silt and evaporites <i>Saltpan on floor of Death Valley</i>	Unweathered gravel in modern washes <i>Loose pebble and cobble gravel</i>	Gravel, sand, and silt <i>Form irregular beds, commonly cemented by caliche. Include unconsolidated gravel in washes</i>	
Pleistocene and Recent			
Qgv	Qgp	Surface form of deposit	
Varnished gravel in abandoned washes <i>Pebble to boulder gravel; fragments at surface strongly varnished but firm</i>	Qgp	<i>Qg, modern and abandoned washes consisting of braided channels and gravel bars. Fragments on surface of abandoned washes are varnished; those on surface of modern wash are essentially unweathered</i>	
Qgp	<i>Qgp, desert pavement. Armor of varnished fragments forming a nearly plain surface; fragments range in size from pebbles to boulders</i>		
Pleistocene and Recent			
Qgp	<i>Weathered gravel</i>		
<i>Pebble to boulder gravel and sand, commonly cemented by caliche. Locally faulted and probably tilted. Surface of deposit is commonly a desert pavement, an armor of angular fragments from less than 1 inch to several feet in diameter. Varnish on surface of deposit less distinct than on gravel in washes. Fragments in weathered zone commonly much disintegrated</i>			
Ts	Tg	Tg	Tg
Sedimentary rocks predominate <i>Includes some beds of early Pleistocene age</i>	Volcanic rocks predominate <i>Includes small areas of Paleozoic sedimentary rocks</i>	Granitic rocks <i>Chiefly monzonite</i>	
PRECAMBRIAN TERTIARY			
pCr			
Metamorphic rocks <i>Metadiorite, schist, gneiss, marble</i>			
Contact <i>Generalized or approximate; includes faults</i>			
Fault scarp on fan <i>Many small scarps omitted</i>			
Outline of drainage area <i>Shown only in mountains</i>			
Outline of fan or fan segment			
x ³⁶ Sample locality			
A Fan or fan segment mentioned in text			



MAP OF BLACK MOUNTAINS, CALIFORNIA, SHOWING ALLUVIAL FANS



Base from U.S. Geological Survey 15-minute quadrangles, Bennetts Well, and Funeral Peak

INTERIOR—GEOLOGICAL SURVEY WASHINGTON, D. C. 1964—G 63289

Geology generalized from Drowes (1963) and C. B. Hunt (unpublished data)