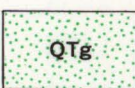
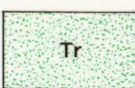


EXPLANATION



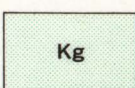
Gila Conglomerate



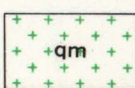
Intrusive rhyolite



Diabase



Granodiorite porphyry



Quartz monzonite

Contact

Dashed where approximately located

Fault

Dashed where approximately located

PRODUCTS OF METALLIZATION  
AND ALTERATION

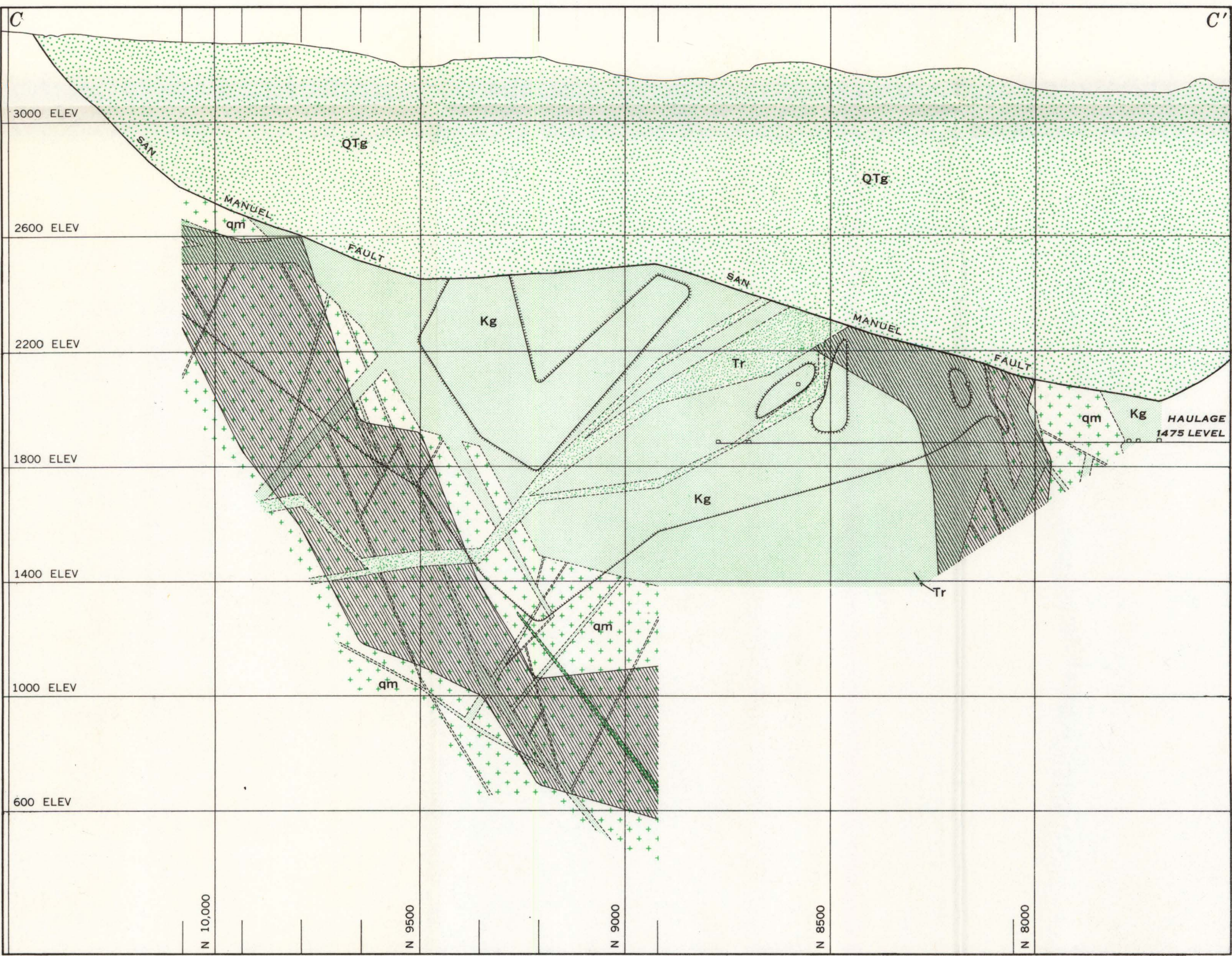
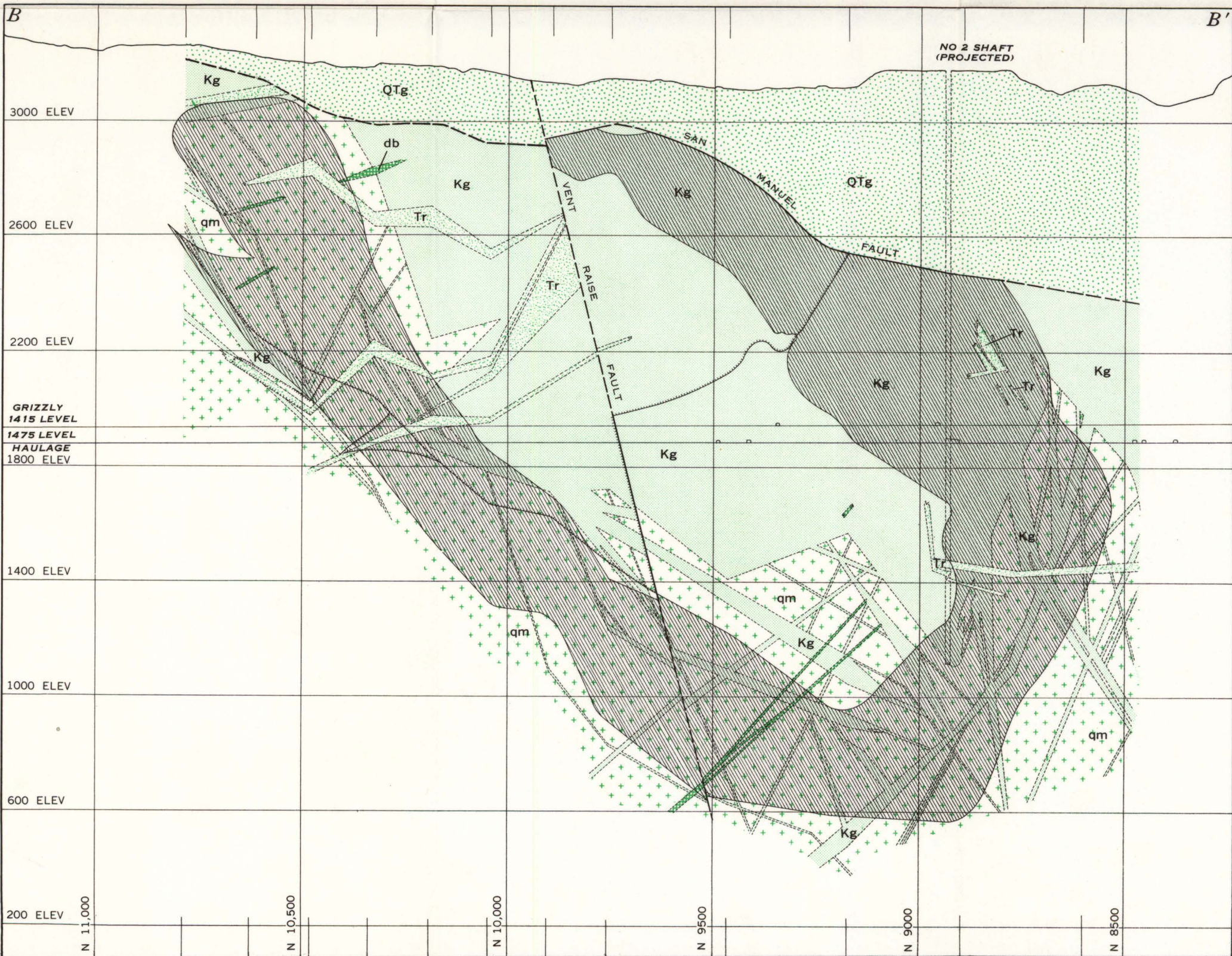


More than 0.5 percent copper

Limit of oxidation

Dashed where approximately located.  
Hachures on oxidized side

TERTIARY AND QUATERNARY  
TERTIARY  
CRETACEOUS OR TERTIARY  
CRETACEOUS(?)  
PRECAMBRIAN



INTERIOR—GEOLOGICAL SURVEY, WASHINGTON, D. C.—1954—G-63304

Geology by J. D. Pelletier and staff,  
San Manuel Copper Corporation, 1956,  
published with permission

GEOLOGIC SECTIONS A-A', B-B', AND C-C', OF SAN MANUEL  
MINE, PINAL COUNTY, ARIZONA

