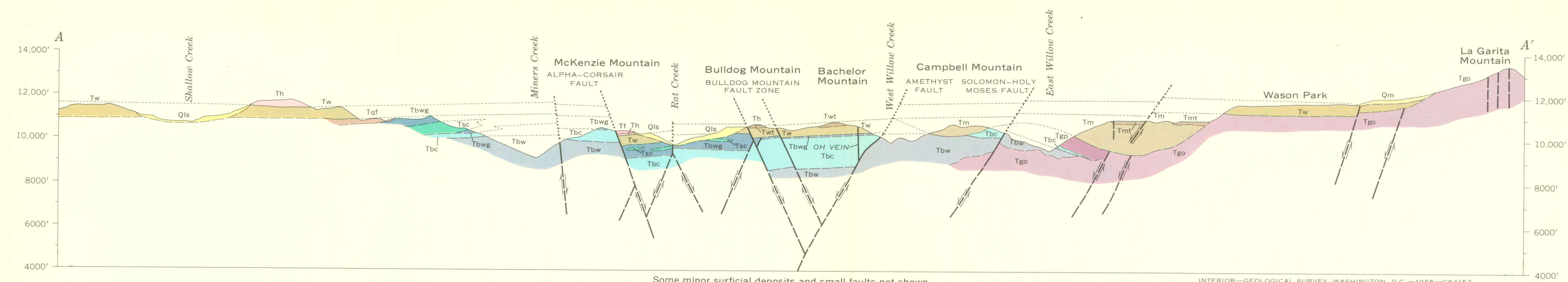
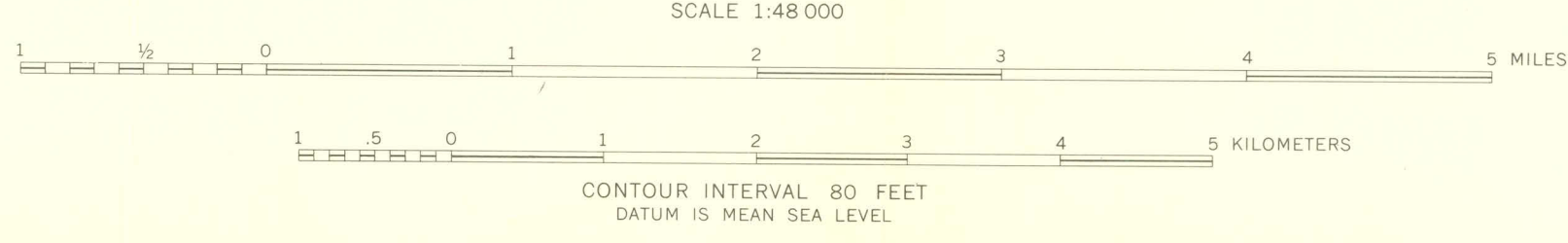




Base from U.S. Geological Survey topographic
quadrangles: Creede, 1959; Bristol Head, 1959;
Spar City, 1957; and San Cristobal 4 NE preliminary.
Culture revised 1963

Geology by T. A. Steven and J. C. Ratte



GEOLOGIC MAP AND SECTION OF THE CREEDE DISTRICT, COLORADO

EXPLANATION				
Qal	Qf	Qls	Qm	Qtg

Surficial deposits
Qal, alluvium
Qf, alluvial-fan deposits
Qls, landslide debris
Qm, moraine and related glacial deposits
Qtg, terrace gravels

Tc	Tcb	Tctr
----	-----	------

Creede Formation
Tc, undifferentiated stream, lake,
and pyroclastic deposits
Tcb, sedimentary breccia containing
abundant rhyolitic pebbles
Tctr, trachyte and calcareous tuffs

Tf	Tfv	Tfi
----	-----	-----

Fisher Quartz Latite
Tf, largely lava flows and domes,
with some volcanic breccia and
pyroclastic deposits
Tfv, volcanic neck
Tfi, dike

Tpr

Point of Rocks volcanic rocks

Tss	Ts
-----	----

Snowshoe Mountain Quartz Latite
Tss, porous, partly welded tuff
Ts, densely welded tuff
Broken line indicates local, less welded parting in
otherwise densely welded tuff

Tnt	Tn
-----	----

Nelson Mountain Quartz Latite
Tnt, slightly to moderately welded tuff
Tn, densely welded tuff

Trt	Trw	Tr
-----	-----	----

Bat Creek Quartz Latite
Trt, soft, generally nonwelded tuff
Trw, hard welded tuff
Tr, undifferentiated lava flows and pyroclastic rocks

Th	Thi
----	-----

Huerto Formation
Th, lava flows and volcanic breccia
Thi, dikes

Twt

Wason Park Rhyolite
Twt, slightly to moderately welded tuff
Tw, densely welded tuff

Tmt

Mammoth Mountain Rhyolite
Tmt, nonwelded to moderately welded tuff
Tm, densely welded tuff

Tfc

Farmers Creek Rhyolite

Tsc

Shallow Creek Quartz Latite

Tbwg	Tbc	Tbw
------	-----	-----

Bachelor Mountain Rhyolite
Tbi, intrusive plug
Tbwg, Windy Gulch Member
Tbc, Campbell Mountain Member
Tbw, Willow Creek Member

Tmc

Rhyolite of Miners Creek

Tdp	Tgo
-----	-----

La Garita Quartz Latite
Tdp, Phoenix Park Member
Tgo, Outlet Tunnel Member; includes
local deposits of younger talus and
mudflow breccia

Contact
Dashed where approximately located; short dashed
where gradational or indefinite; dotted where con-
cealed

Fault
Showing dip. Dashed where approximately located;
dotted where concealed. Stipple pattern indicates
perovskite brecciated rock

Strike and dip of beds

Strike and dip of flow layers or compaction foliation

Horizontal flow layers or compaction foliation

Strike of vertical flow layers or compaction foliation