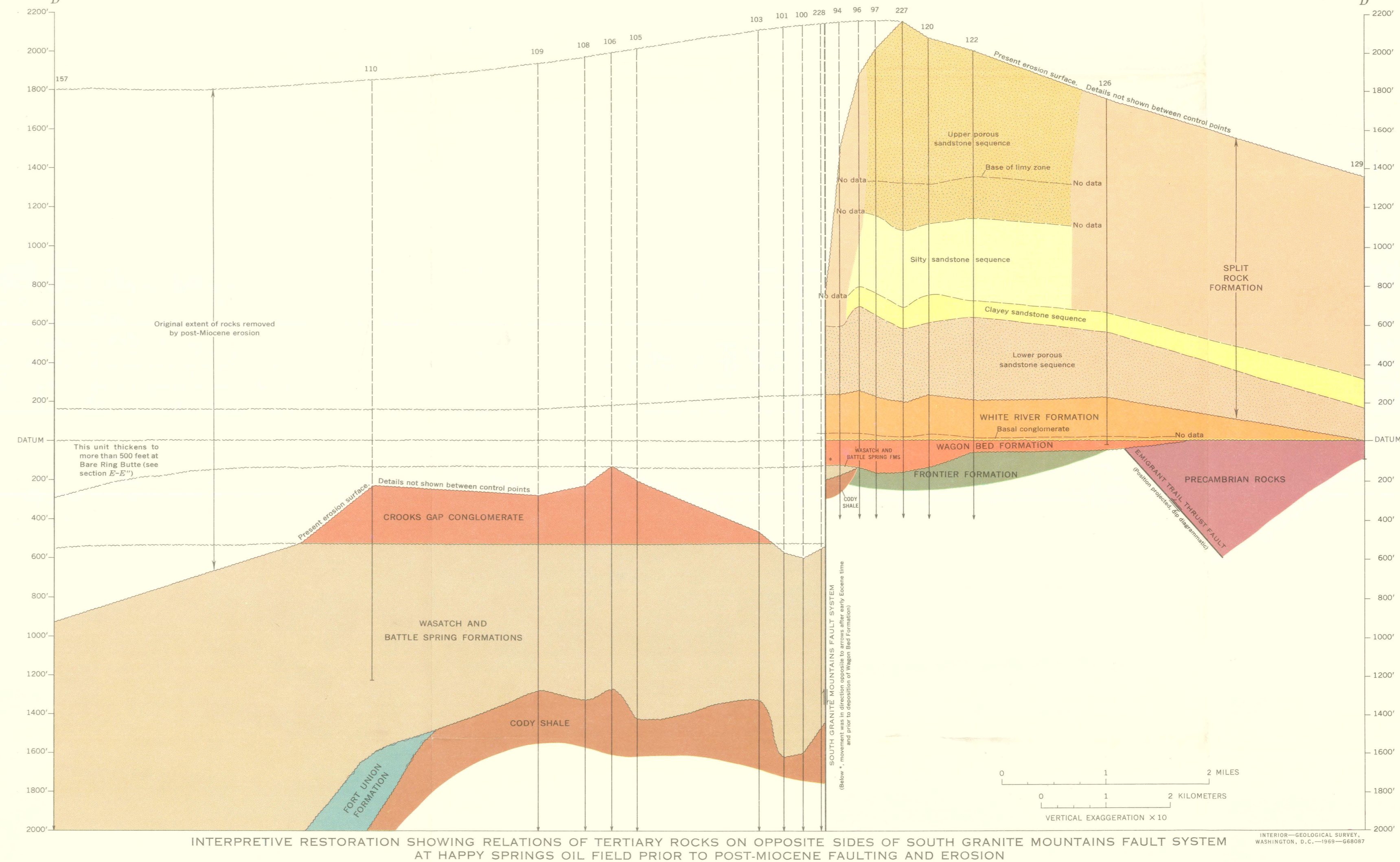
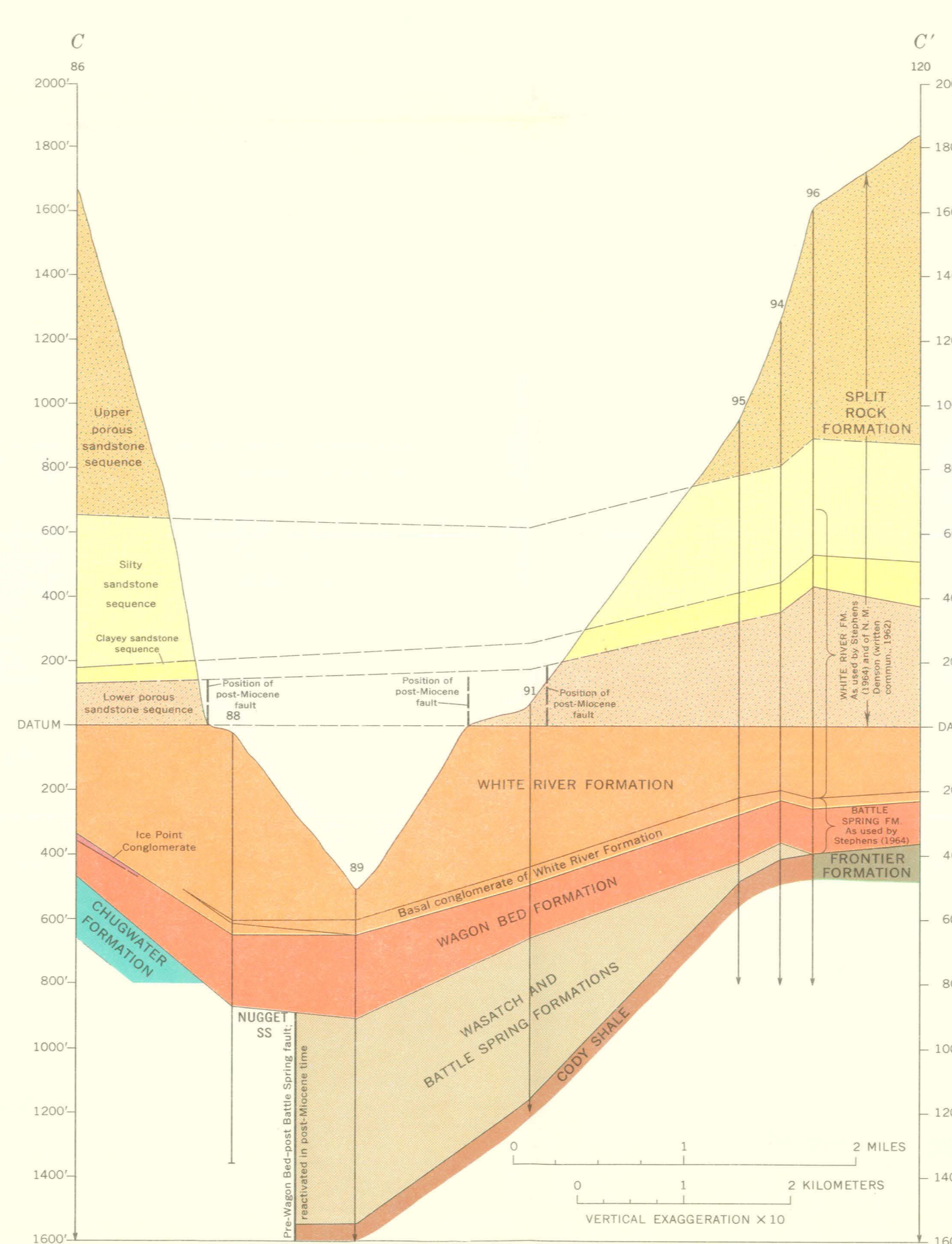
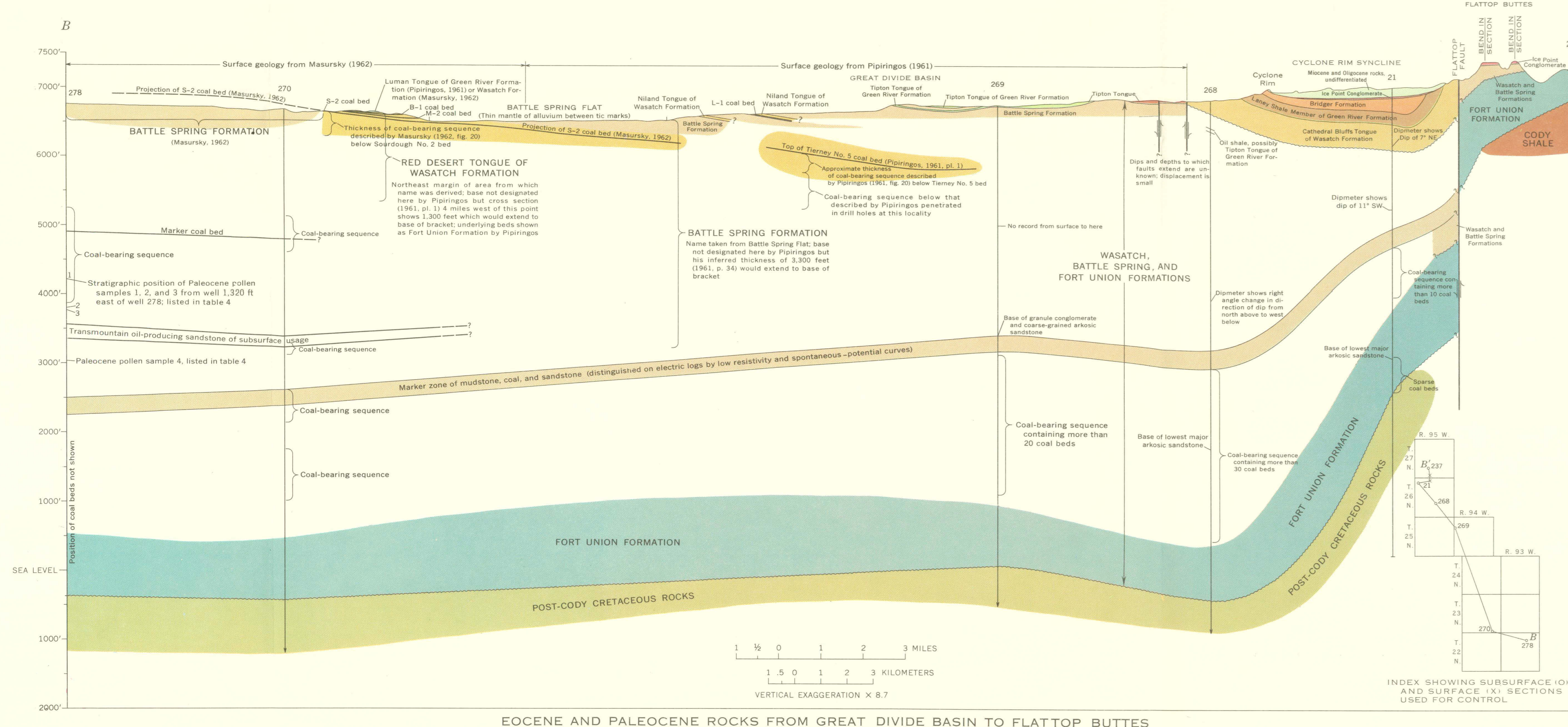
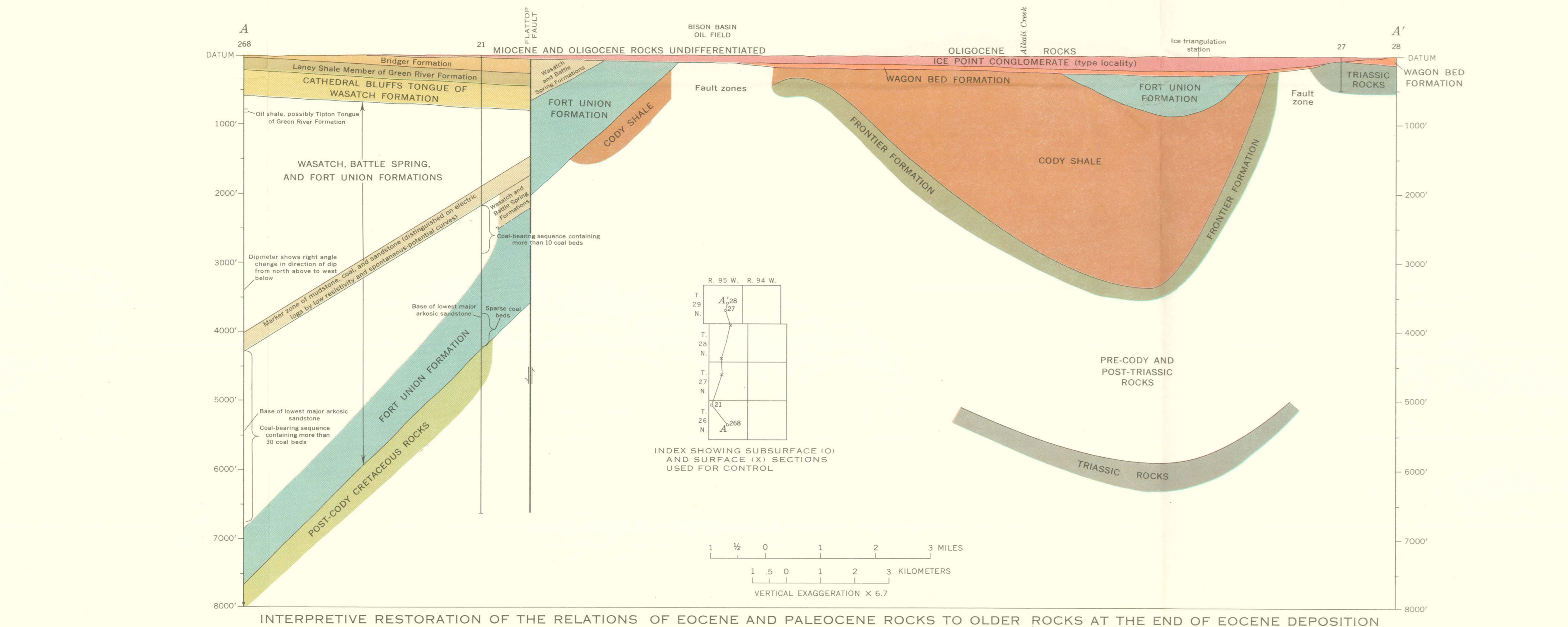


Base from Wyoming Highway Dept. map:
Frontier and Natrona Counties, 1955;
Carbon County, 1962; Sweetwater County, 1965.

Scale: 1 inch = 10 miles
1:62,500
Vertical exaggeration 10x

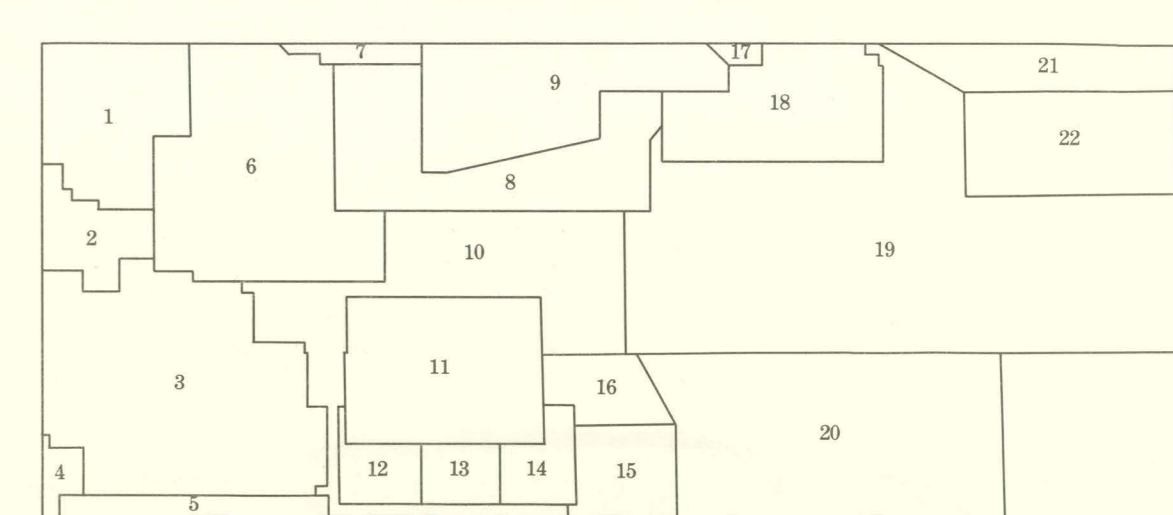
Geology by J. D. Love, 1965



GEOLOGIC MAP AND SECTIONS A-A' TO D-D', GRANITE MOUNTAINS AREA, CENTRAL WYOMING

Sections A-A' to N-N' shown on plate 3

Sections K-K' to W-W' shown on plate 4



(Some of the outlined areas have been completely or partly resurveyed for this study:
1. Thompson and White (1934)
2. Barlow and Rogers (1937), locally (1948)
3. Bell (1935, 1948)
4. Love, White, and Howe (1962) different interpretations are shown on maps by Bell (1935), White, Shary, and Sheridan (1964), Phipps (1964), and Sheridan, Maxwell, and Collier (1965)
5. Love, J. D., unpublished data (1962)
6. Van Buren (1962)
7. Thompson and White (1934)
8. Van Buren and White (1935)
9. Zeller, Soller, and Hyatt (1961), supplemented by additional mapping by J. D. Love and R. M. Dwyer
10. Phipps (1964)
11. Phipps (1964)
12. Marshall (1964)
13. Marshall (1964)
14. Marshall (1964)
15. Marshall (1964)
16. Marshall (1964)
17. Marshall (1964)
18. Curry (1964)
19. White and Love (1962)
20. White and Love (1962)
21. Black (1962), Hare and others (1966)
22. Bell (1962)