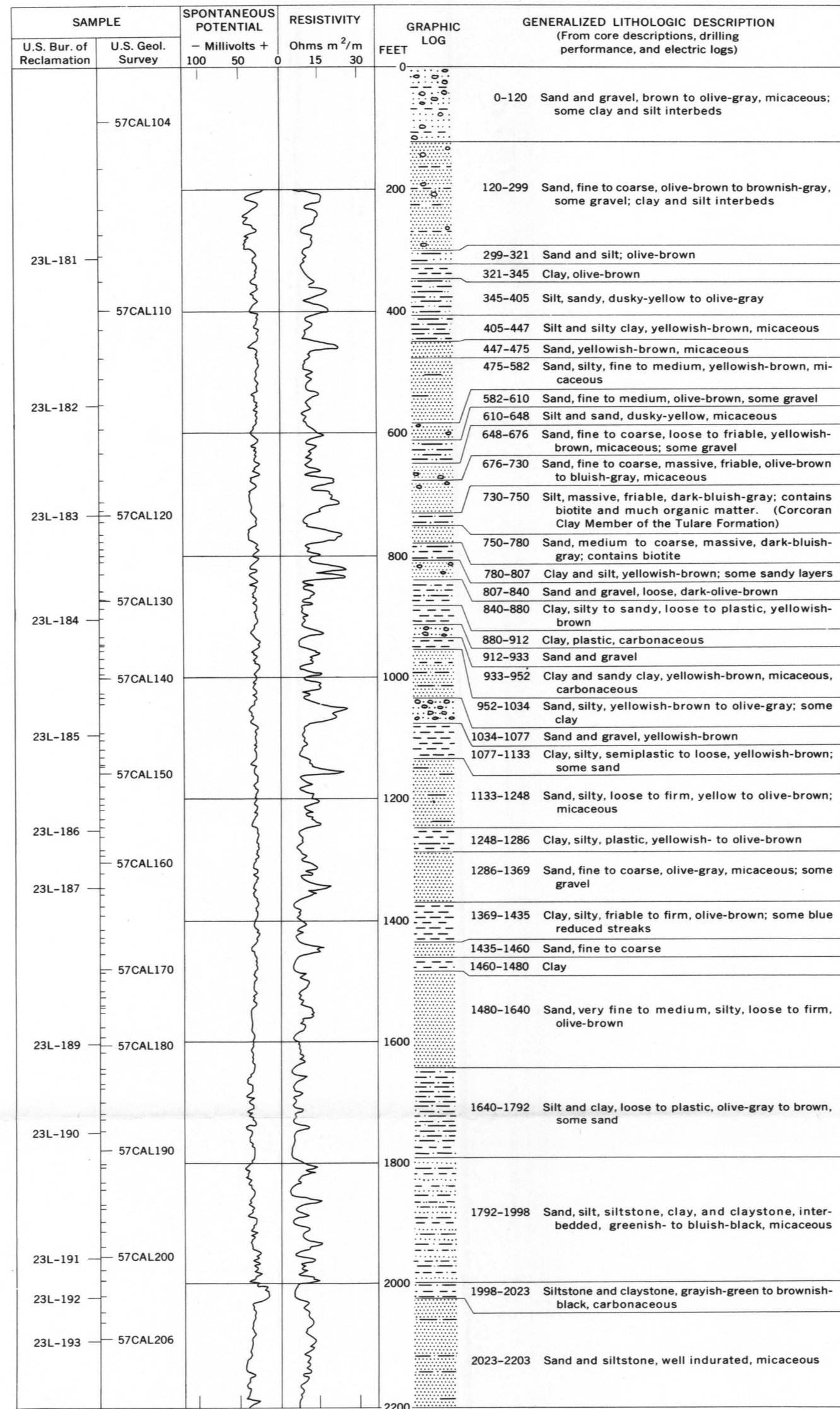
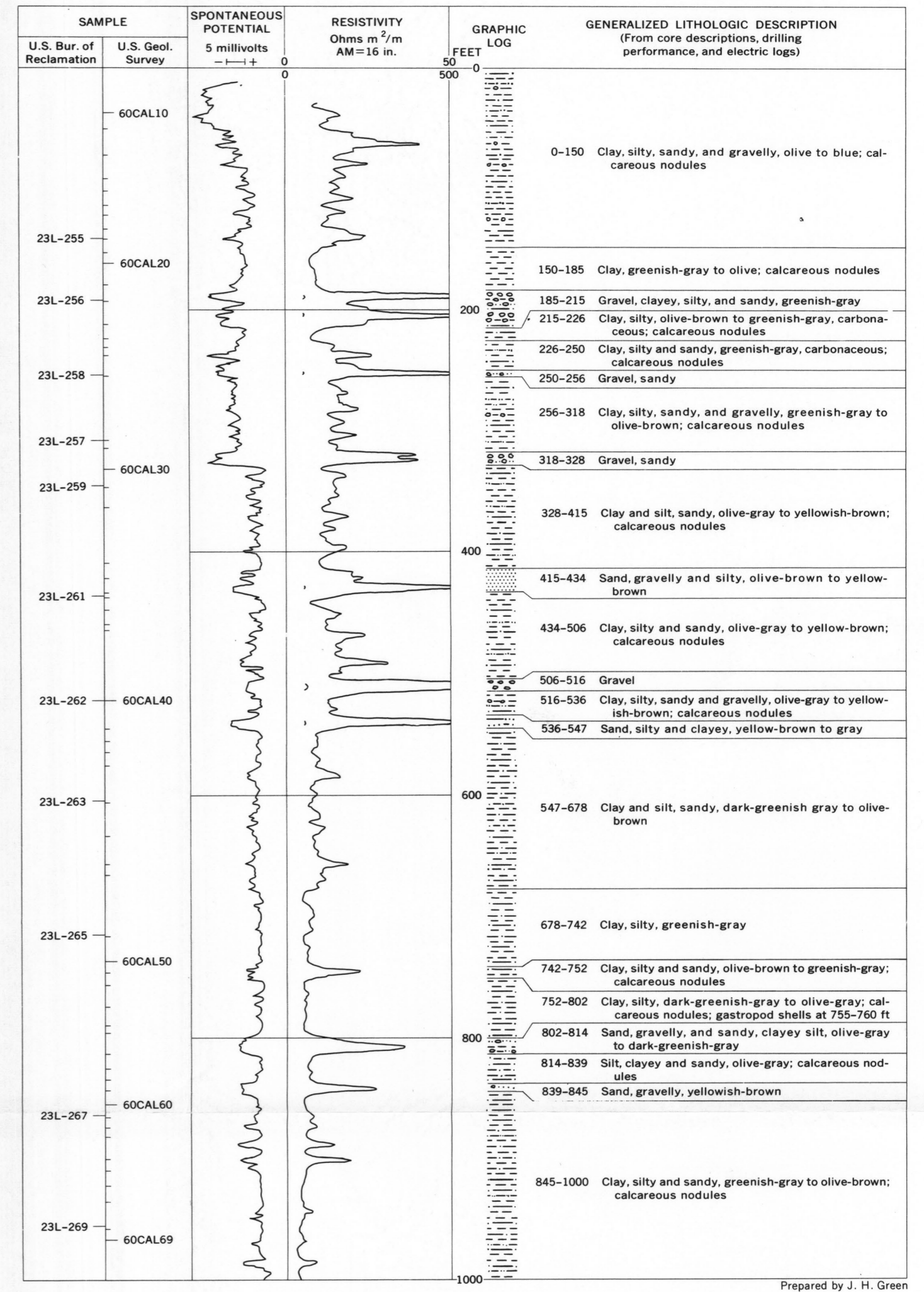


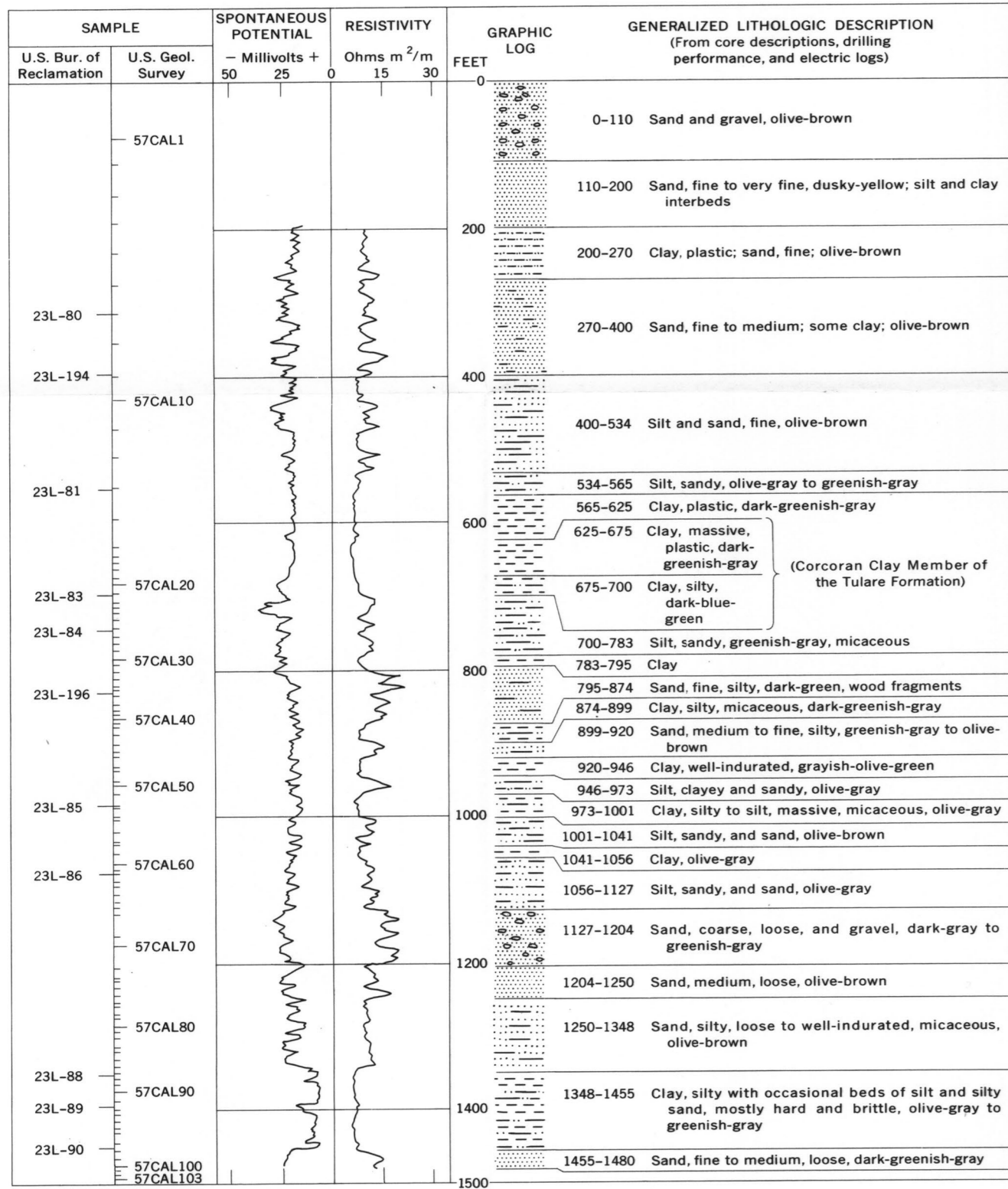
A. CORE HOLE 12/12-16H1, LOS BANOS-KETTLEMAN CITY AREA



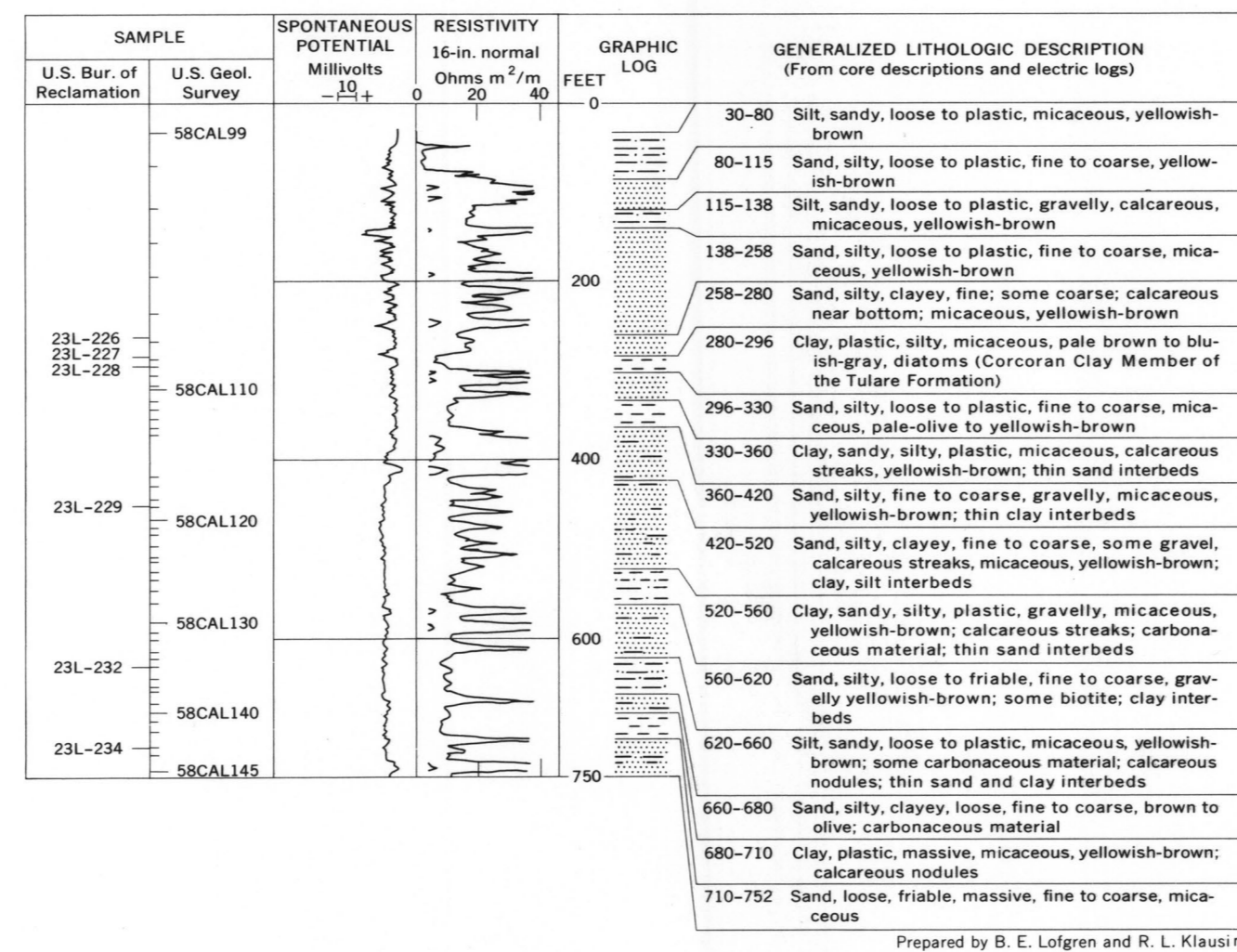
D. CORE HOLE 19/17-22J1, LOS BANOS-KETTLEMAN CITY AREA



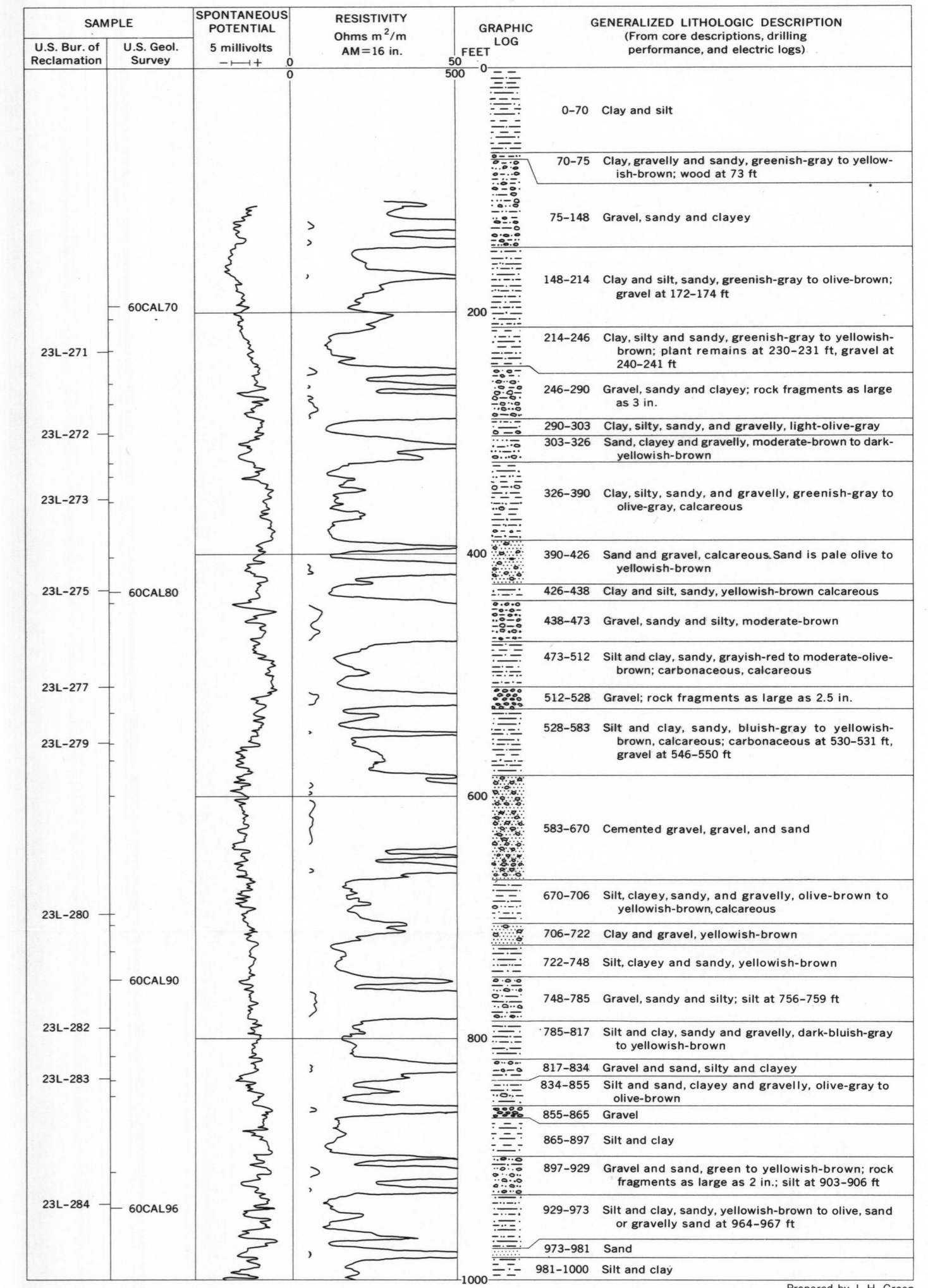
G. CORE HOLE 65/2W-24C7, SANTA CLARA VALLEY



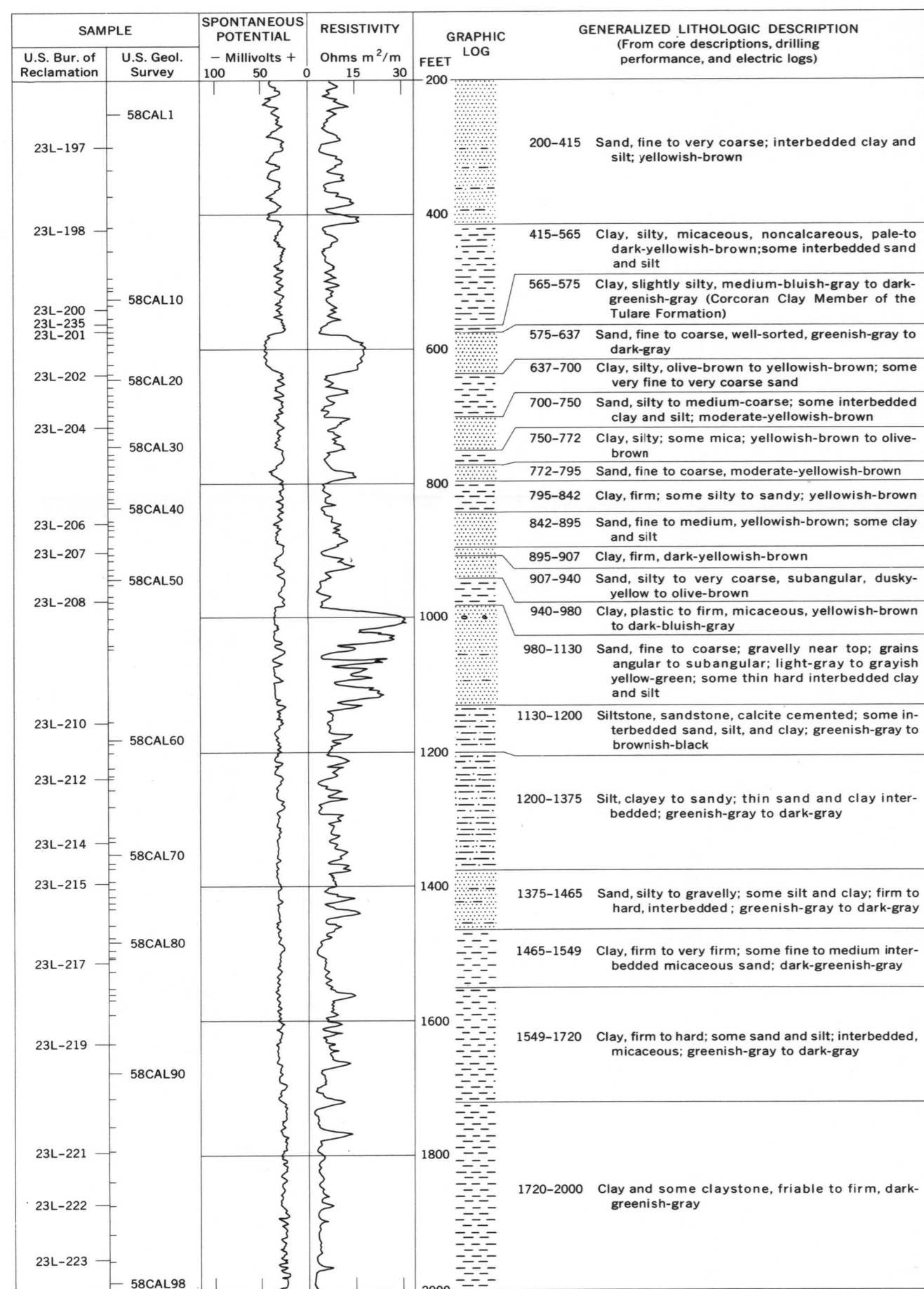
B. CORE HOLE 14/13-11D1, LOS BANOS-KETTLEMAN CITY AREA



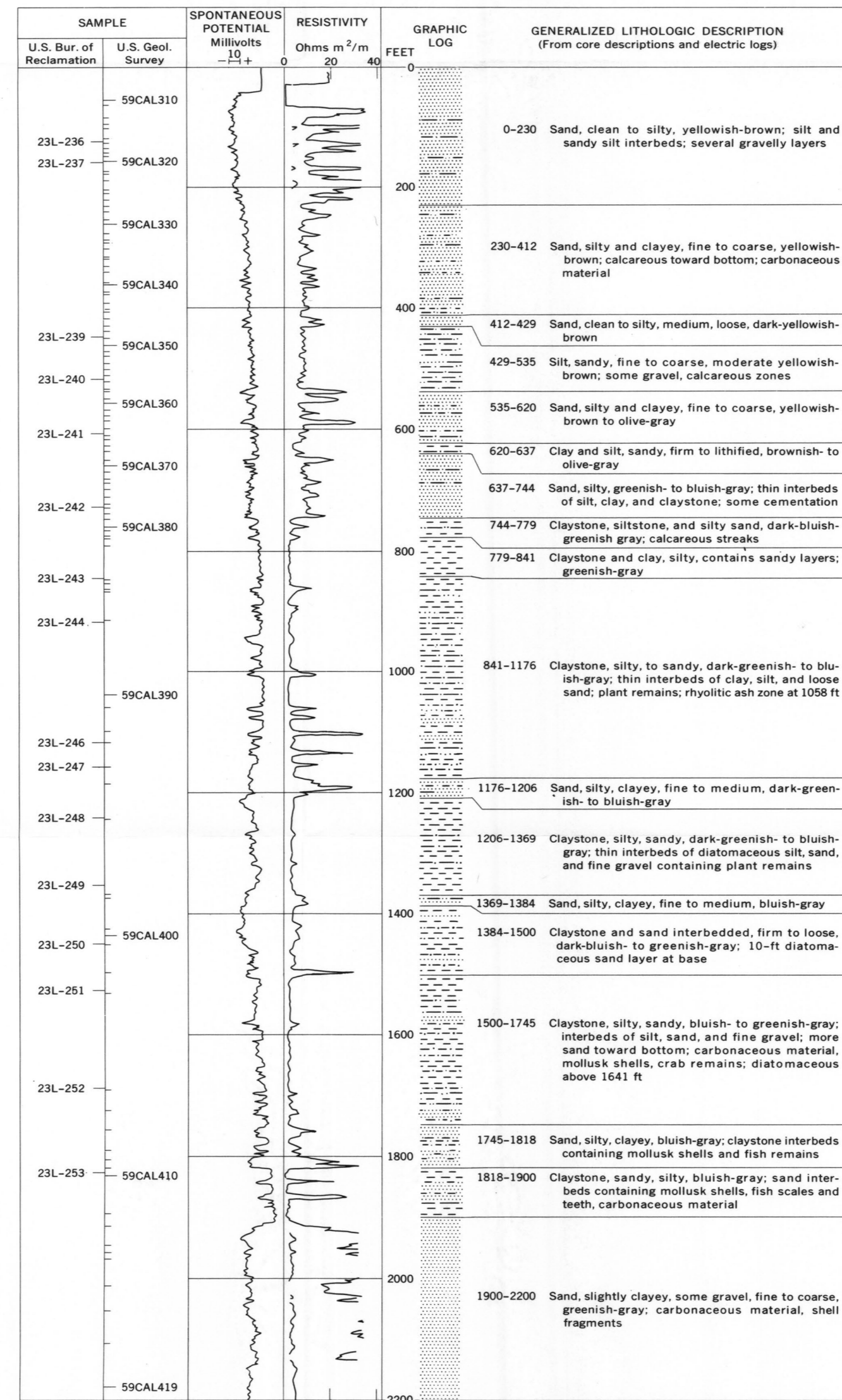
E. CORE HOLE 23/25-16N1, TULARE-WASCO AREA



H. CORE HOLE 75/1E-16C6, SANTA CLARA VALLEY



C. CORE HOLE 16/15-34N1, LOS BANOS-KETTLEMAN CITY AREA



F. CORE HOLE 24/26-36A2, TULARE-WASCO AREA

COMPOSITE LOGS OF CORE HOLES IN THE LOS BANOS-KETTLEMAN CITY AREA
TULARE-WASCO AREA, AND SANTA CLARA VALLEY, CENTRAL CALIFORNIA