

EXPLANATION

— Drainage basin boundary
Dashed where approximately located

--- Limits of playa area used in estimates of stored-solute quantities

♦ Weather station

▲ Gaging and sampling site

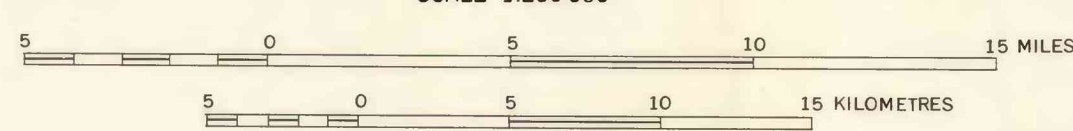
— 4247 — Bathymetric contours
Showing altitude in feet. Contour interval variable

20 • [420-100-0.75]

Sampling site and data for lake-bottom and peripheral sedimentary deposits

Dot indicates site; adjacent number is field number of site. Data in box indicate: Stored-solute quantity, in tons per acre for top 5 feet; characteristic salinity of interstitial brine from 2- to 5-foot depth, in thousands of parts per million; and chloride: sodium ratio for brine, on basis of equivalents per million. Ratios for Lake Abert and Summer Lake, about 0.55 and 0.35, respectively. Parentheses indicate data largely estimated

Base from U.S. Geological Survey
Klamath Falls, 1955, and Crescent, 1955-62
Black numbered lines indicate the 10,000 metre
Universal Transverse Mercator grid, zone 10



CONTOUR INTERVAL 200 FEET
WITH SUPPLEMENTARY CONTOURS AT 100-FOOT INTERVALS
DATUM IS MEAN SEA LEVEL

MAP SHOWING PHYSIOGRAPHIC AND HYDROLOGIC SETTING AND THE CHEMICAL CHARACTER OF BRINES IN SHALLOW LAKE-BOTTOM AND PERIPHERAL SEDIMENT, LAKE ABERT AND SUMMER LAKE, SOUTH-CENTRAL OREGON