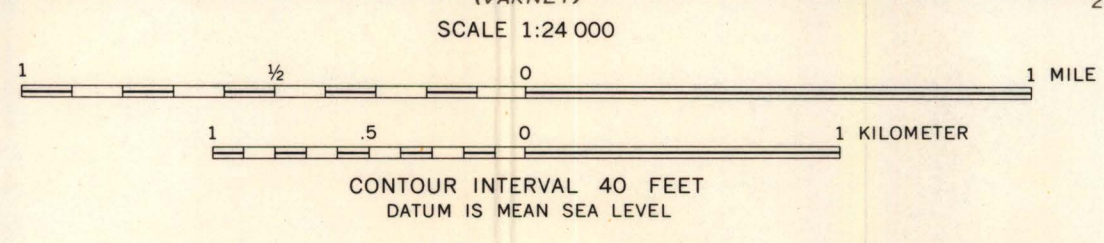




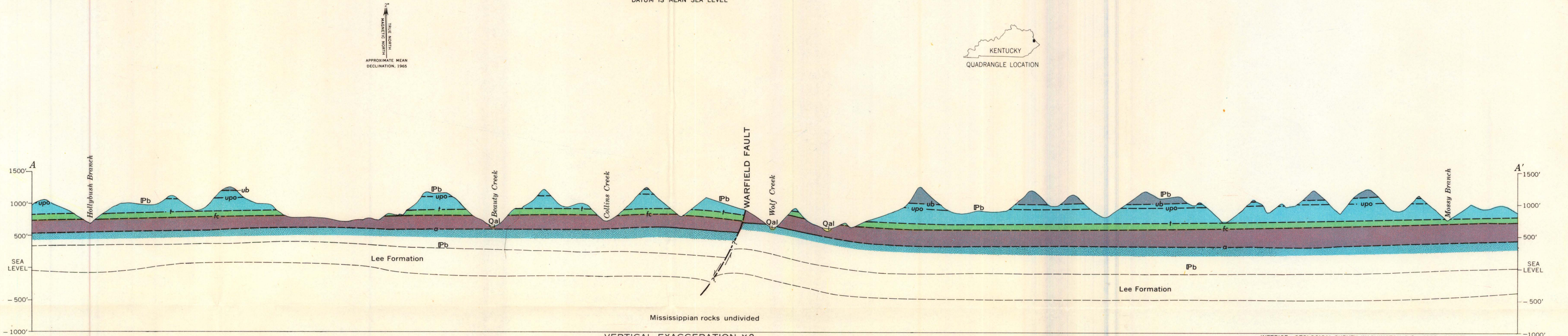
EXPLANATION

- Qal
Alluvium
- ub
Pb
wi
fc
uw
a
- Breathitt Formation
ur, Upper Richmond coal bed
ub, Upper Brons coal bed
b, Brons coal
upo, Upper Peach Orchard coal bed
wi, Winfred coal bed
t, Taylor coal bed
fc, Fire Clay rider coal bed
fc, Fire Clay coal bed
uw, Upper Whitesburg coal bed
a, Alms coal bed
- Contact, approximately located
- Coal bed
Dashed where approximately located; dashed and dotted where projected from other coal beds; dotted where concealed
- Fault, approximately located
U, upthrown side; D, downthrown side
- Strike and dip of beds
- Structure contours
Drawn on top of Taylor coal bed. Long dashed where control less accurate. Short dashed where datum is above land surface. Contour interval 20 feet
- Mine shaft
53
- Adit
Number designates graphic coal sections
- Caved adit
Number designates graphic coal sections
- Prospect or outcrop of coal bed
Number designates graphic coal sections
- Operating mine
- Drill hole showing hole number

Base by U.S. Geological Survey, 1951
The Carter Coordinate System letters and numbers used to designate five-minute divisions of latitude and longitude are shown along the margins; tick marks indicate one-minute divisions



Geology mapped in 1955 by E. J. Lyons; in 1959 and 1960 by Harley Barnes and J. W. Huddle
This map has also been printed in GQ-178 (Huddle and Englund, 1962)



GEOLOGIC MAP AND SECTION OF THE KERMIT QUADRANGLE, KENTUCKY