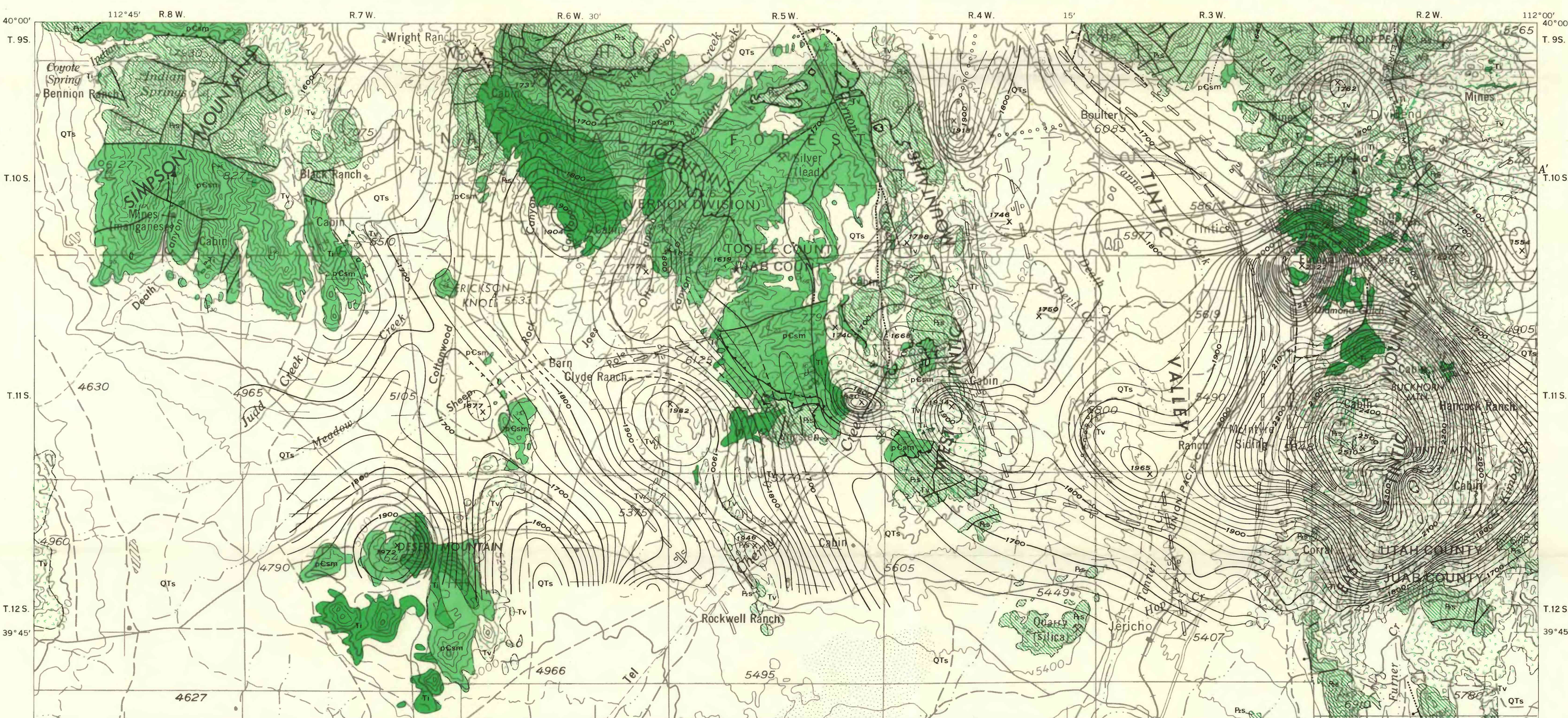


GEOLOGIC AND GRAVITY-ANOMALY MAP

Gravity survey by D. R. Mabey, 1963.
Geology modified from Stokes (1963) on the basis of original work by H. T. Morris, 1965.

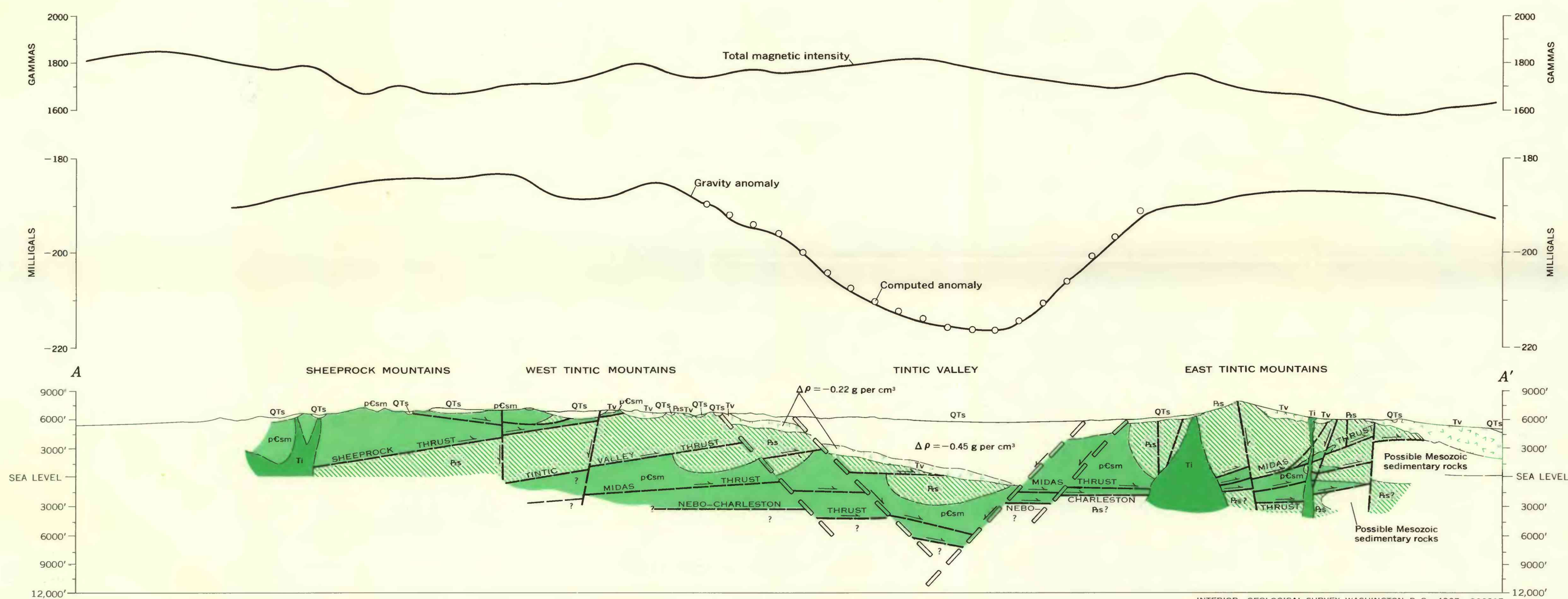
EXPLANATION

- QTs
Alluvium and valley-fill deposits
Include semiconsolidated and unconsolidated deposits of pre-Lake Bonneville, Lake Bonneville, and post-Lake Bonneville age and sedimentary and volcanic rocks of the Pliocene Salt Lake(?) Formation
- T1
Intrusive rocks
- T2
Volcanic rocks
Include welded tufts of Oligocene (?) age and pyroclastic and flow rocks of Eocene (?) age
- T3
Sedimentary rocks
- pCsm
Sedimentary and metamorphic rocks
Include some thin diabase sills and dikes
- Contact
Dashed where approximately located
- Fault
Dashed where inferred from geologic relations; dotted where concealed. Bar and ball on downthrown side. Arrows show direction of relative displacement.
- Inferred fault
Fault inferred from geophysical data. U, upthrown side; D, downthrown side
- Thrust fault
Sawtooth on upper plate. Dotted where concealed
- Anticline
Showing trace of axial plane and plunge of axis; dotted where concealed
- Syncline
Showing trace of axial plane and plunge of axis
- Crest of buried ridge or hill inferred from geophysical data
- Strike and dip of beds
- Strike of vertical beds
- Strike and dip of overturned beds
- Gravity station
- Gravity-anomaly contours
Contour interval 2 milligrams. Hachured contours indicate enclosed areas of gravity lows. Contours represent Bouguer anomalies for a reduction density of 2.67 g per cm³
- Magnetic contours and flight traverses
Contours dashed where data are incomplete. Contour interval 30 gammas. Values are total intensity relative to an arbitrary datum. Hachured contours indicate enclosed areas of lower magnetic intensity
- Measured maximum or minimum intensity within closed high or closed low
- Density contrast
Shown in section



GEOLOGIC AND AEROMAGNETIC MAP

Aeromagnetic survey flown by P. W. Philbin, 1962, at a barometric elevation of 9000 feet. Compiled by Natalie Tyson



GRAVITY AND MAGNETIC DATA AND GEOLOGIC SECTION ALONG PROFILE A-A'

GEOLOGIC MAPS AND SECTION SHOWING GRAVITY AND MAGNETIC DATA, TINTIC VALLEY AND ADJACENT AREAS, TOOELE AND JUAB COUNTIES, UTAH

