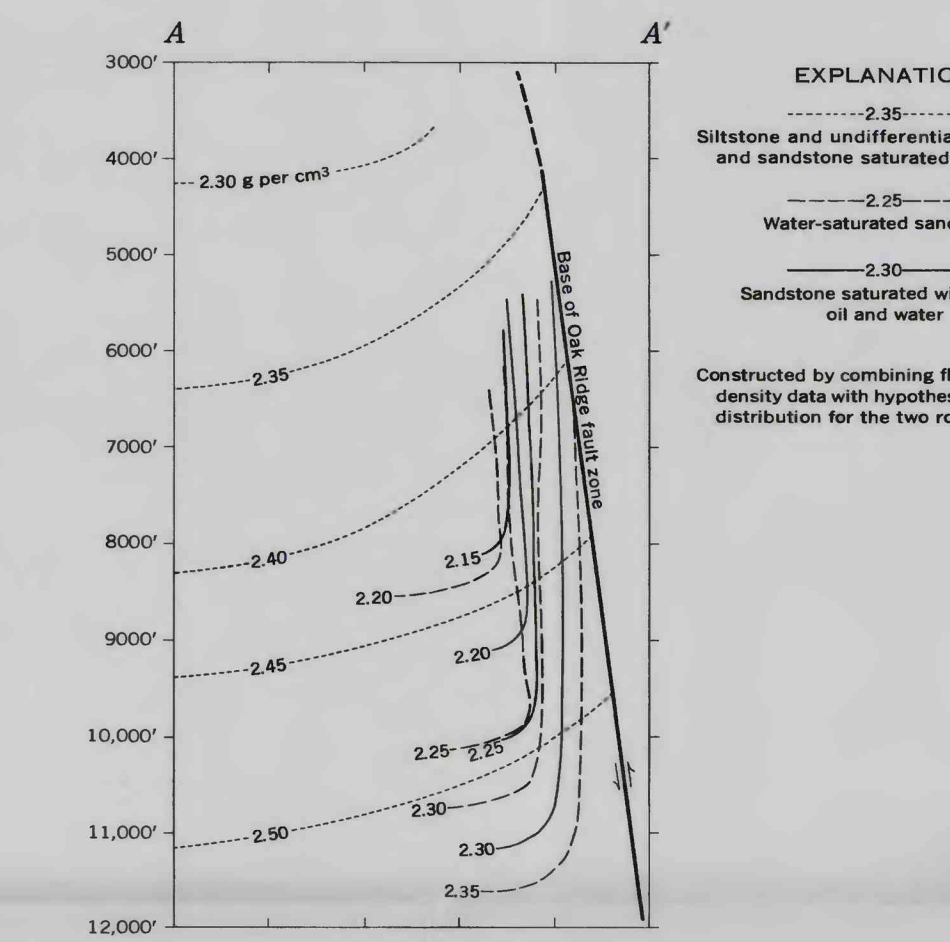
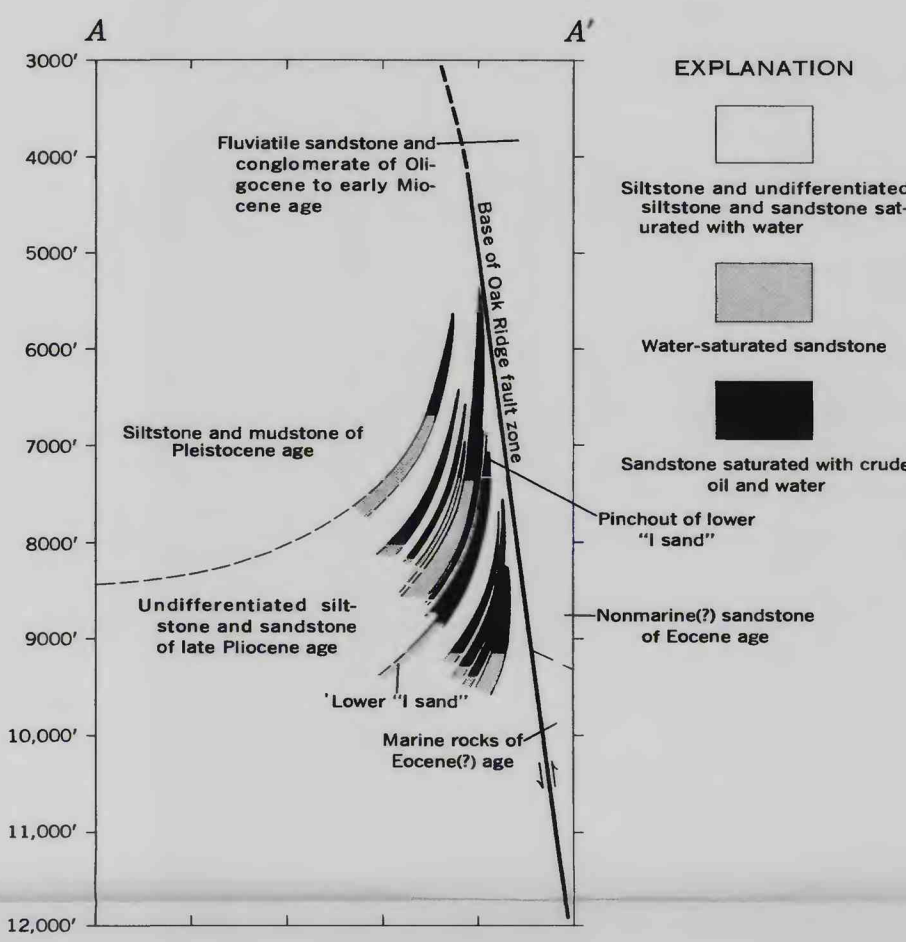
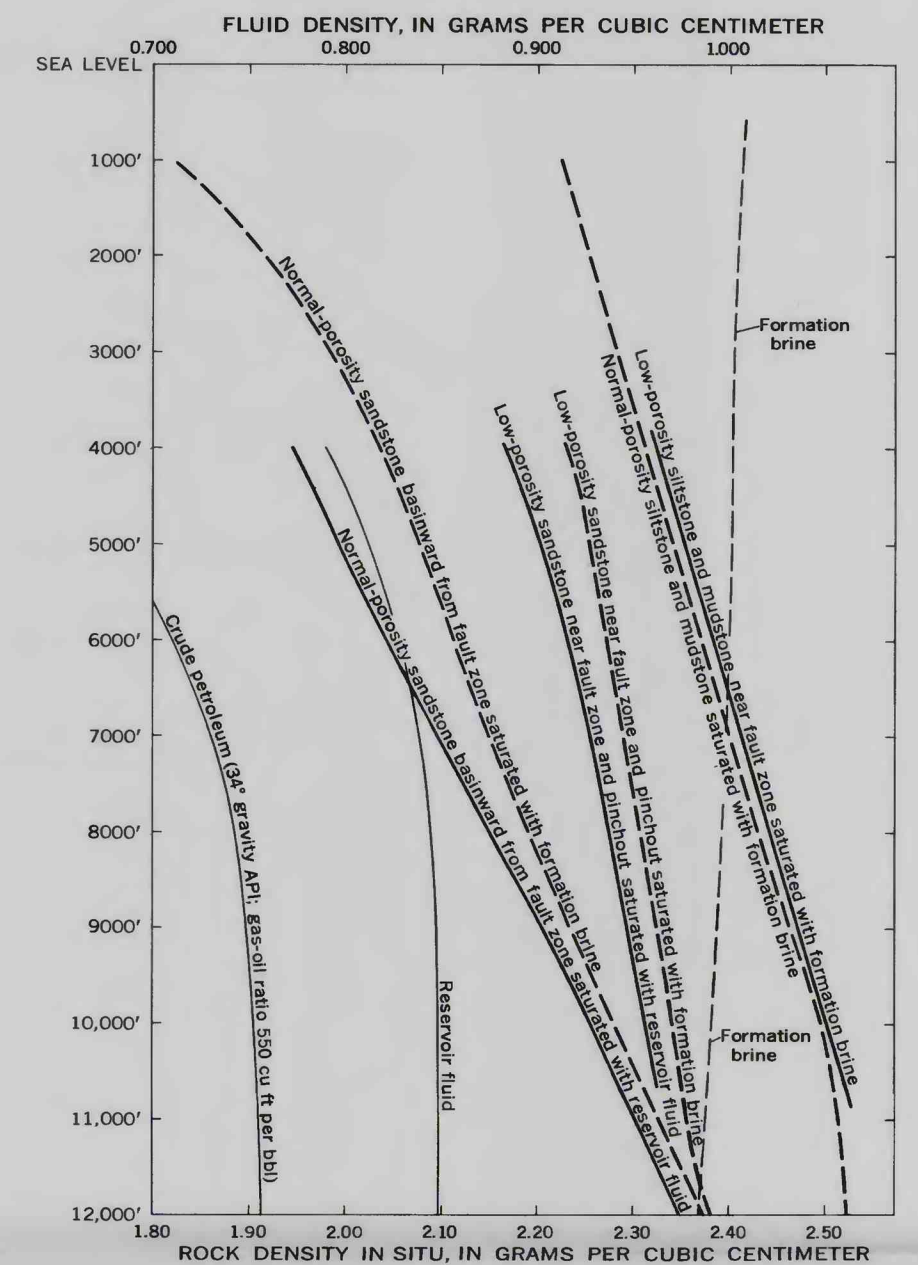


A. STRUCTURE CONTOUR MAP OF LOWER "I SAND"



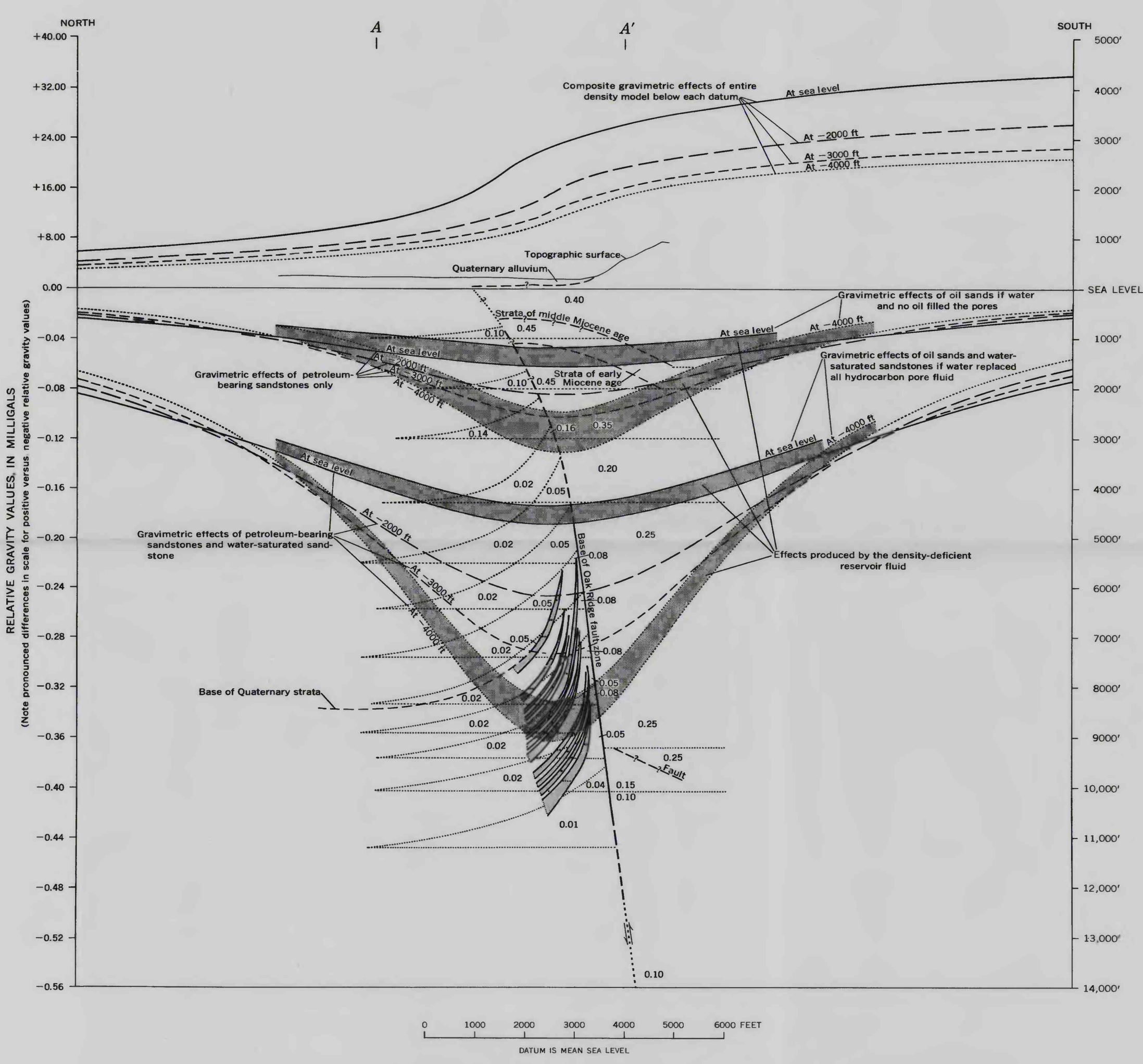
B. TRANSVERSE GEOLOGIC SECTION SHOWING STRUCTURE AND LITHOLOGY

C. IDEALIZED HYPOTHETICAL ISOPYCNIC LINES

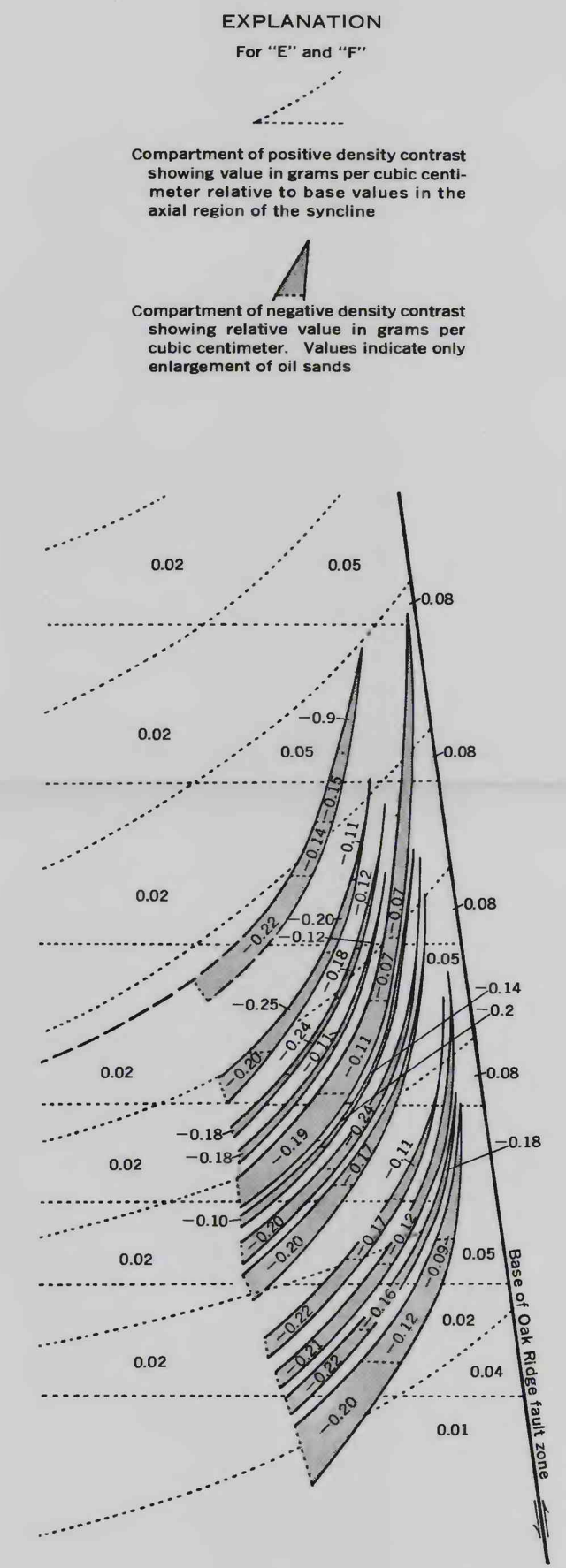


Assumptions: Reservoir fluid is 60 percent crude petroleum and 40 percent brine; formation brine, 16,200-17,000 parts per million dissolved solids. See text for other assumptions and facts utilized.

D. HYPOTHESIZED SUBSURFACE FLUID AND ROCK DENSITIES



E. HYPOTHETICAL DENSITY MODEL AND CALCULATED GRAVIMETRIC PROFILES



F. ENLARGEMENT OF PART OF "E"