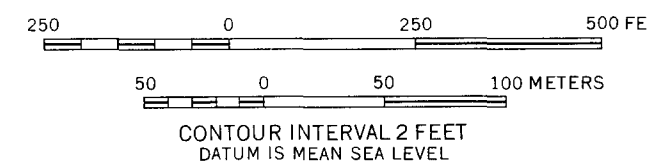


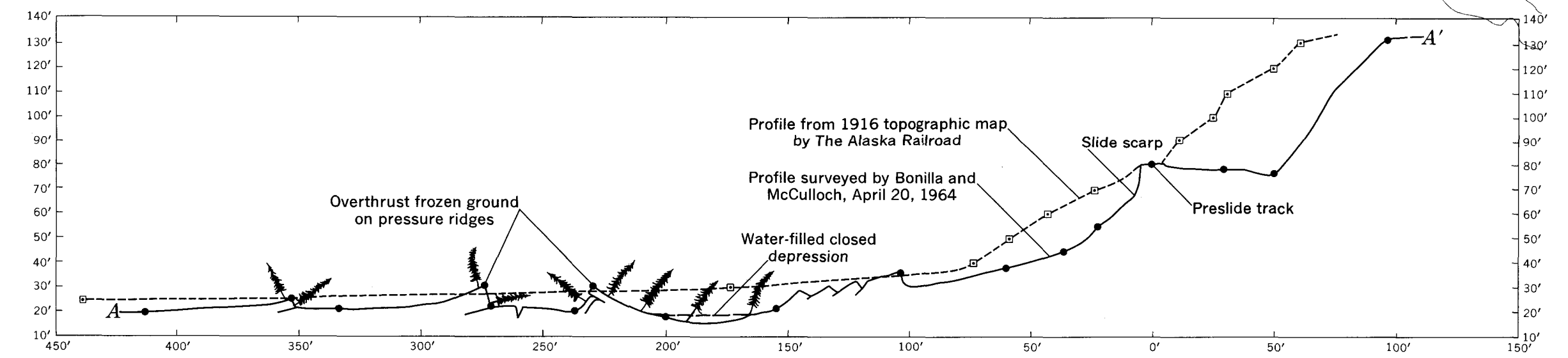
Contour map by Clair A. Hill and Associates, 1964

EXPLANATION

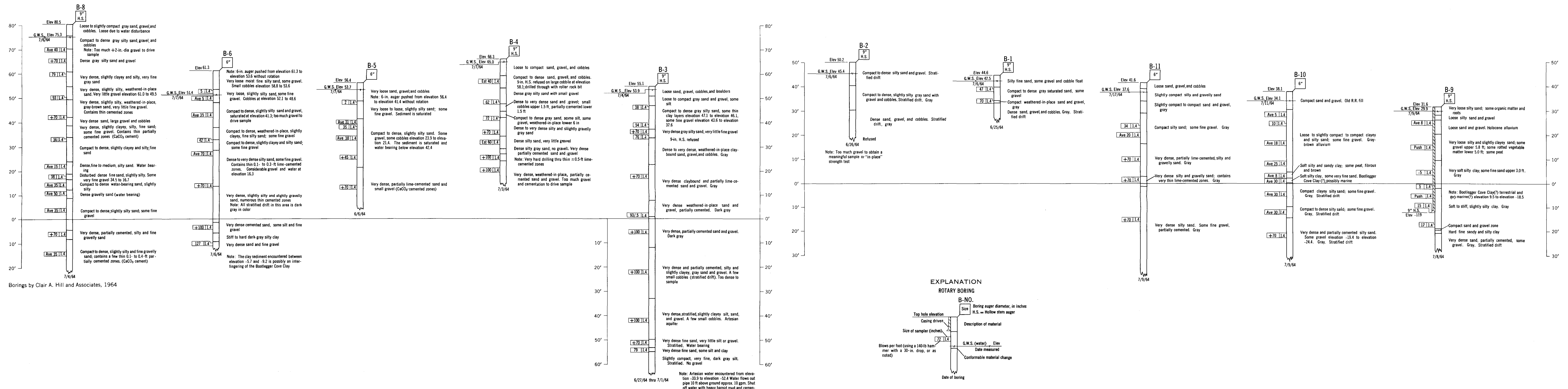
- Top of landslide scarp
Hachures on scarp
- Fracture
Relative vertical movement indicated by bar and ball on lower side
- Crest of pressure ridge
- Railroad line
- Boring location



POTTER HILL LANDSLIDES



**POSTEARTHQUAKE PROFILE OF POTTER HILL SLIDE
LINE OF PROFILE SHOWN ON MAP
NO VERTICAL EXAGGERATION**



Borings by Clair A. Hill and Associates, 1964

BORINGS IN THE POTTER HILL SLIDE AREA

TOPOGRAPHIC MAP, BORE-HOLE DATA, AND FEATURES OF THE POTTER HILL SLIDE AREA, ALASKA