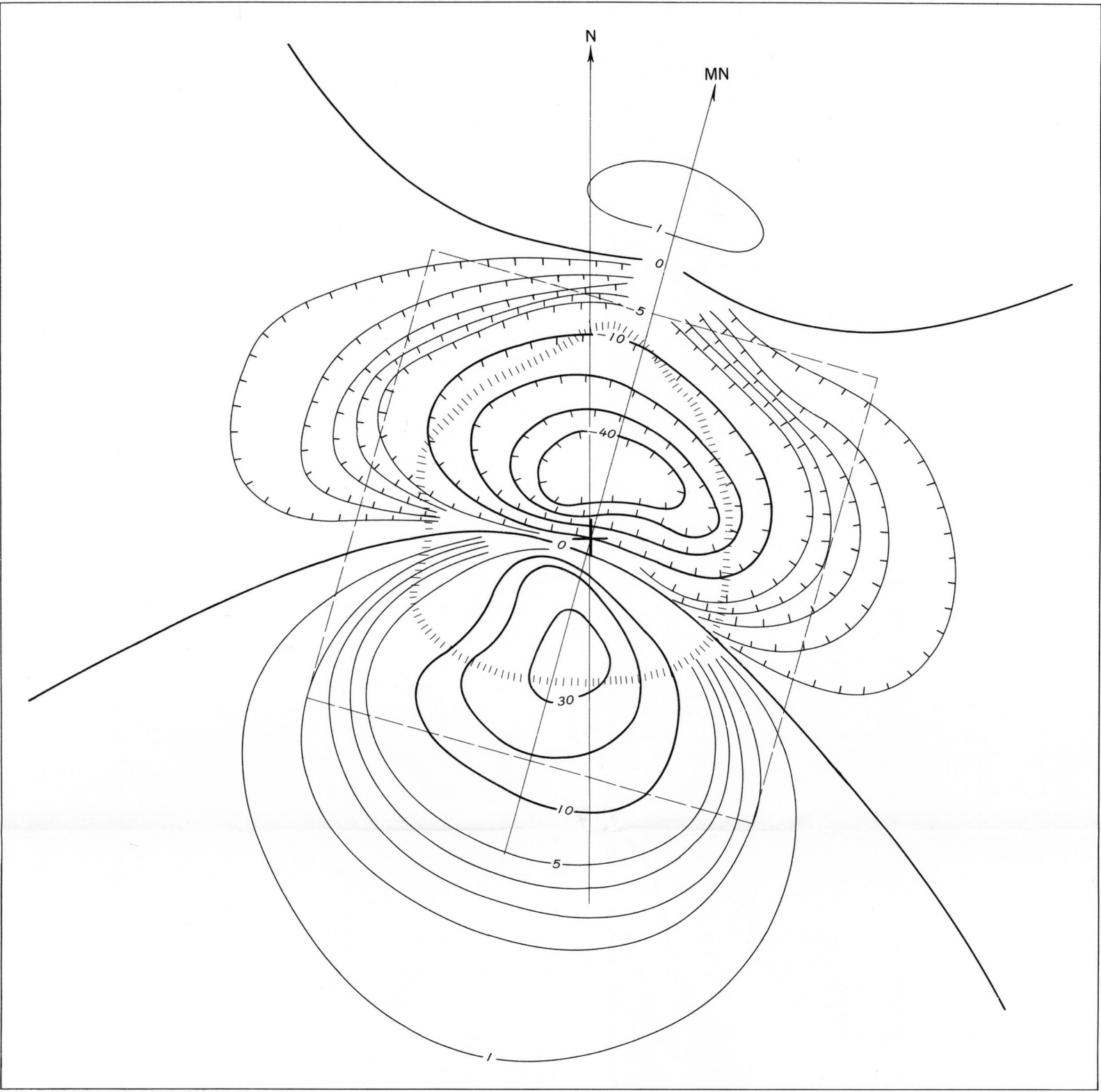
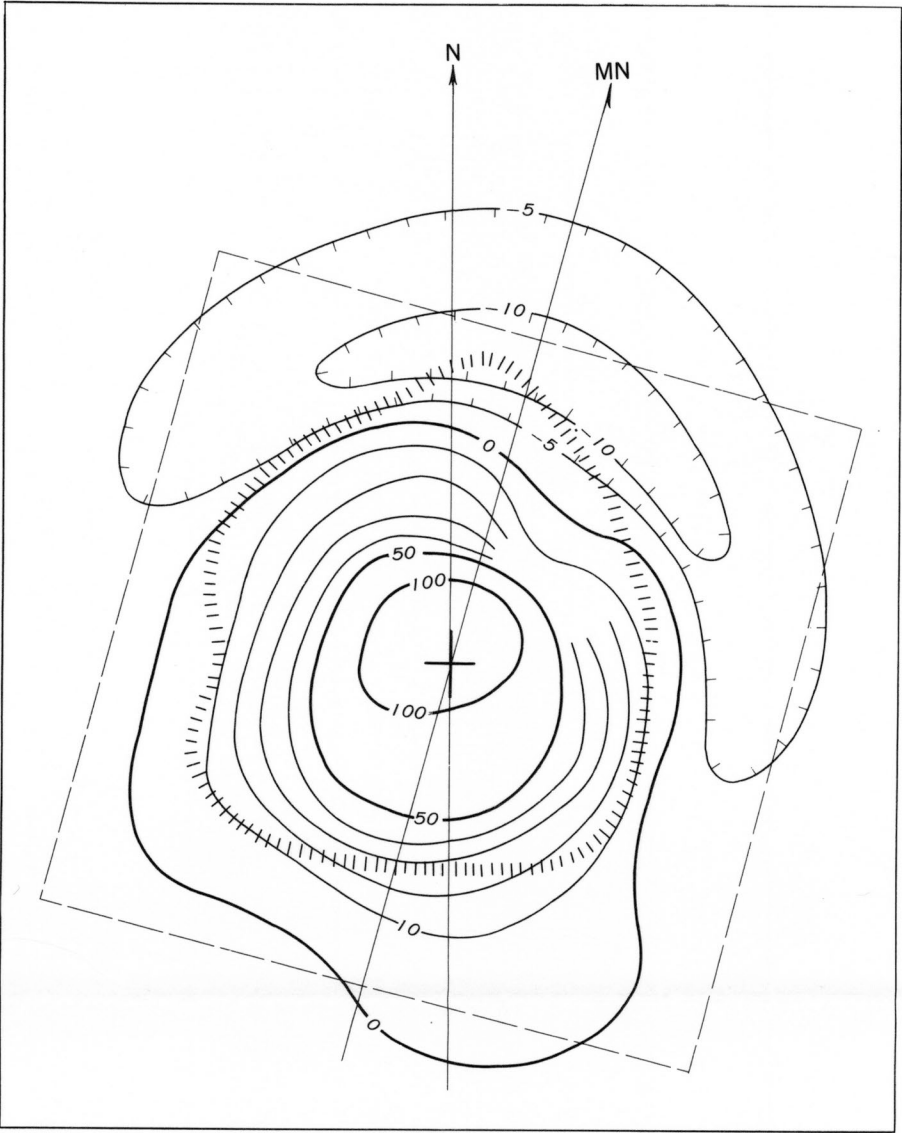


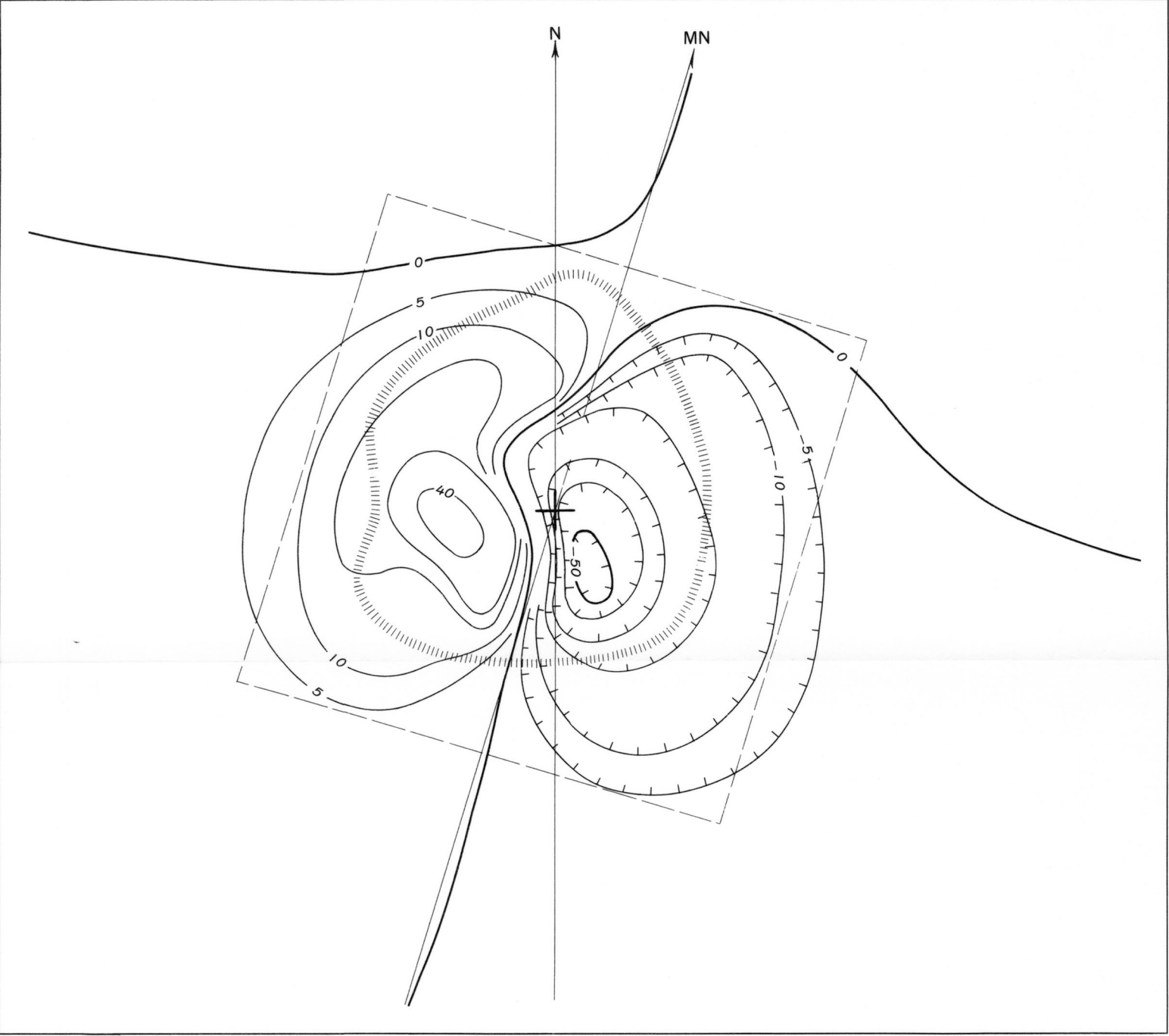
A. BATHYMETRIC MAP  
CONTOUR INTERVAL 200 FATHOMS



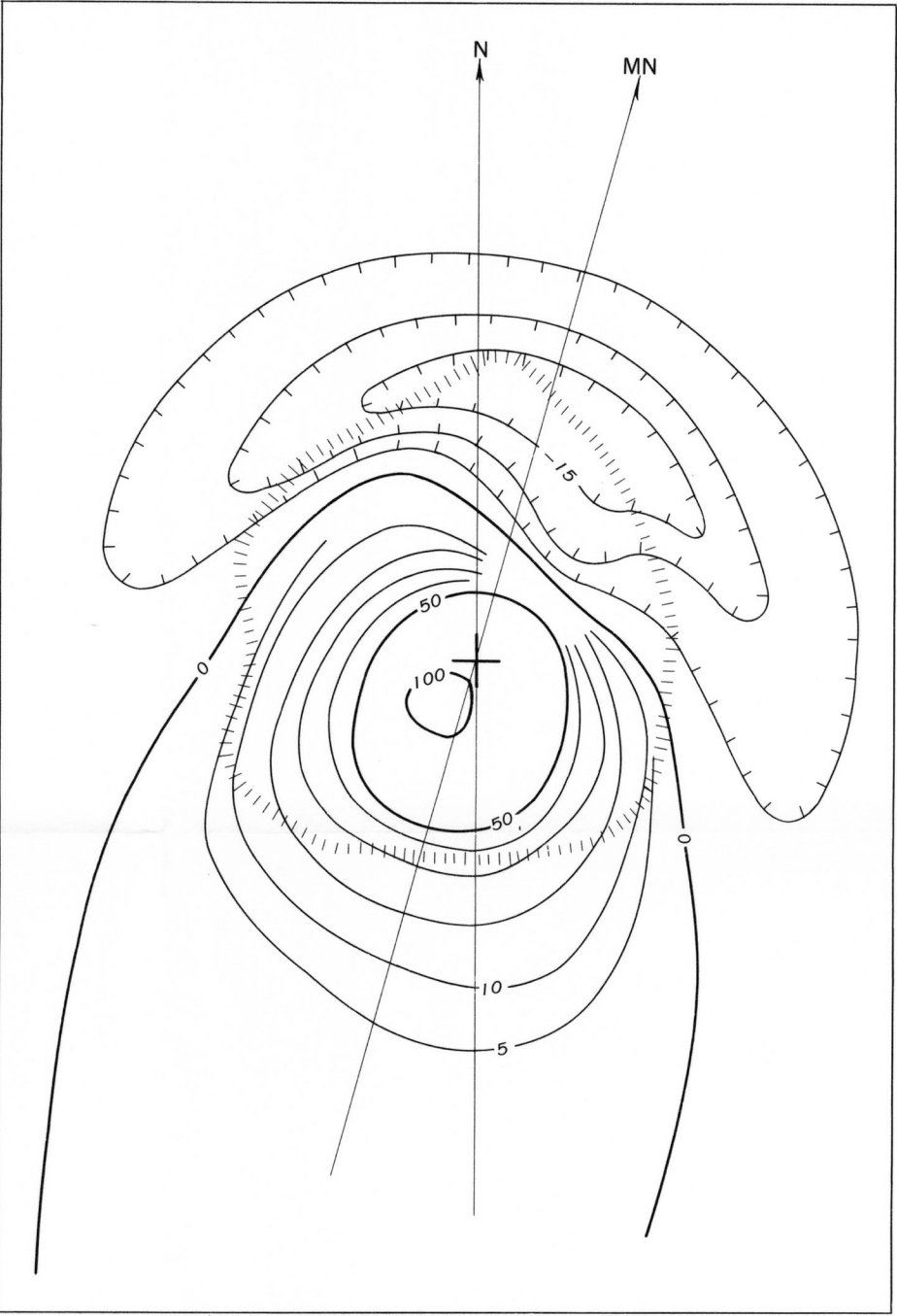
B. FIELD FOR A MAGNETIC-NORTH MAGNETIZATION



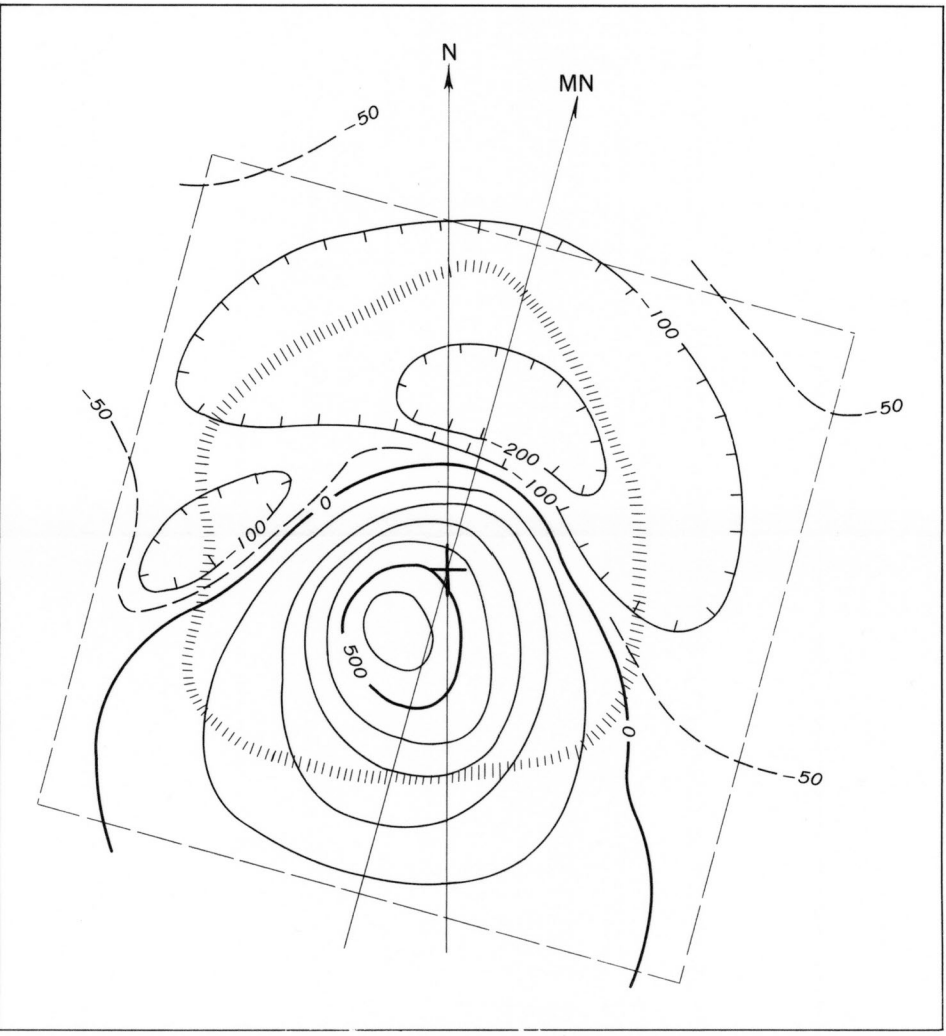
C. FIELD FOR A VERTICAL MAGNETIZATION



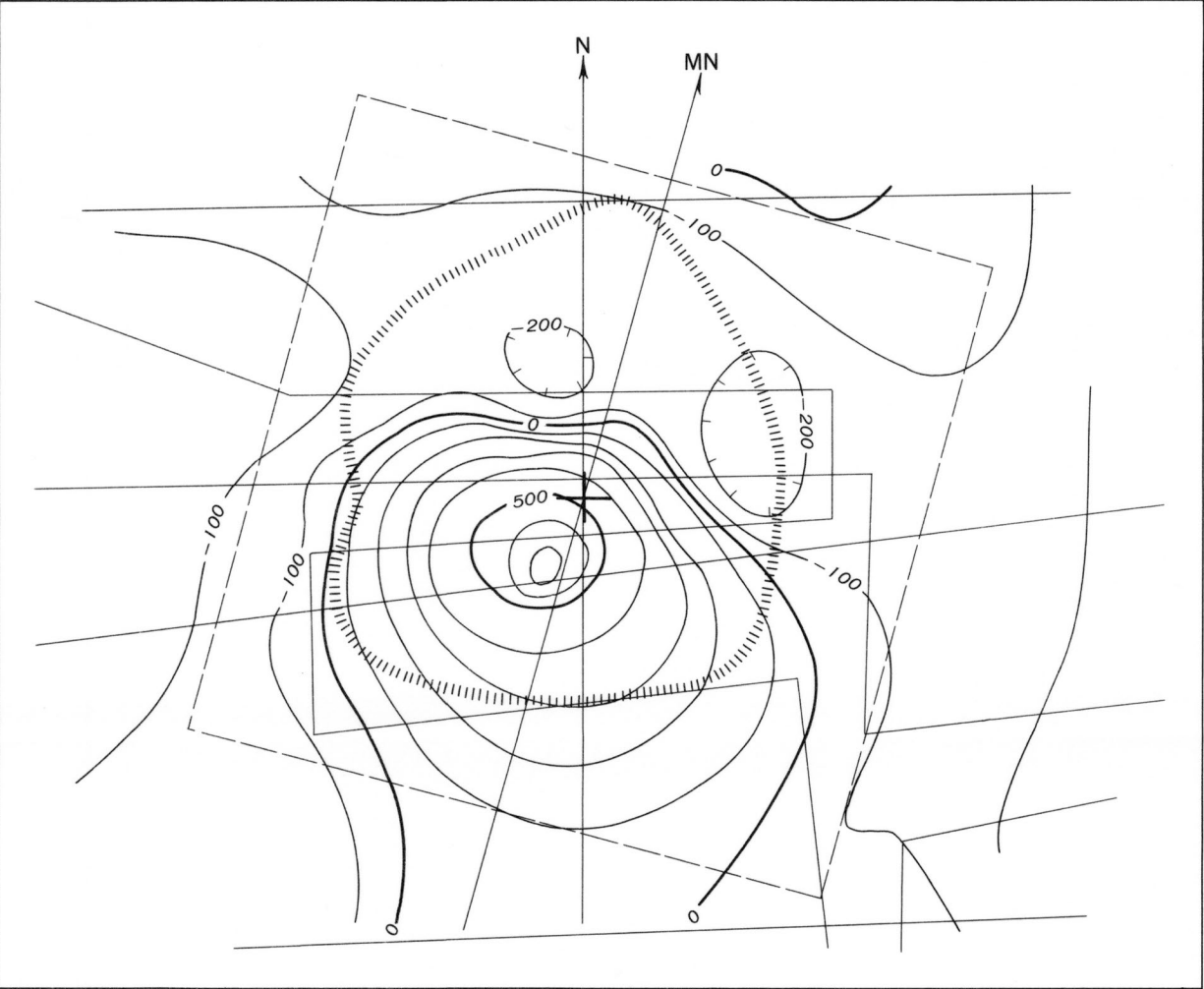
D. FIELD FOR A MAGNETIC-EAST MAGNETIZATION



E. FIELD FOR A MAGNETIZATION PARALLEL  
TO THE PRESENT FIELD



F. OPTIMUM FIT FIELD



G. OBSERVED FIELD

$K=0.001$  in cgs units and  $\Omega=0.47$  oersted are assumed. Field contour values in gammas. Area bounded by hachures corresponds to the base of the seamount. Polygonal segmented line corresponds to the boundary of the grid of fitting points. The track lines of the ship-borne magnetometer are shown in figure G

CONTOUR MAPS SHOWING BATHYMETRY, AND HYPOTHETICAL AND OBSERVED  
MAGNETIC FIELDS FOR HOKE SEAMOUNT, NORTHEASTERN PACIFIC OCEAN

