

A. EPIDOTE AND STAUROLITE

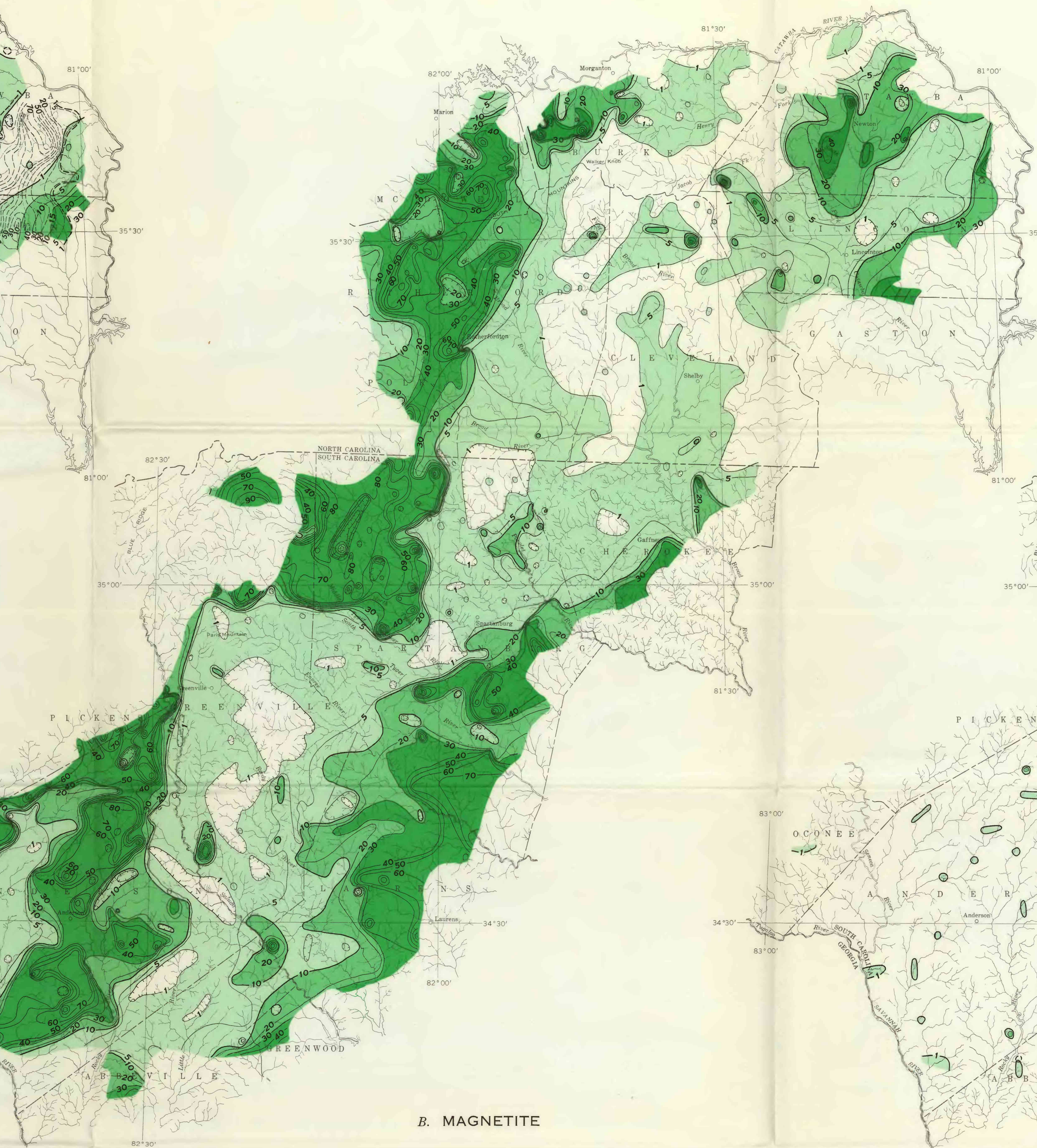
**EXPLANATION**

Isograms are based on percentage of mineral in concentrate free from quartz and hematite. Hashmarks enclose area of decreasing percentage of mineral. Concentrates plotted are from riffle sand or gravel and are from streams having small distributive provinces.

**Epidote isogram**  
Contoured at 1, 5, multiples of 5 to 20, and at 40, 60, and 80 percent. Heavy contour marks 2 percent. Area boundaries, based on percentage of epidote in concentrates, is shown by the following pattern:

<1	1-5	5-15	>15
----	-----	------	-----

**Staurolite isogram**  
Contoured at 1, 5, 10, and multiples of 10 to 90 percent. Heavy contour marks 1 percent.



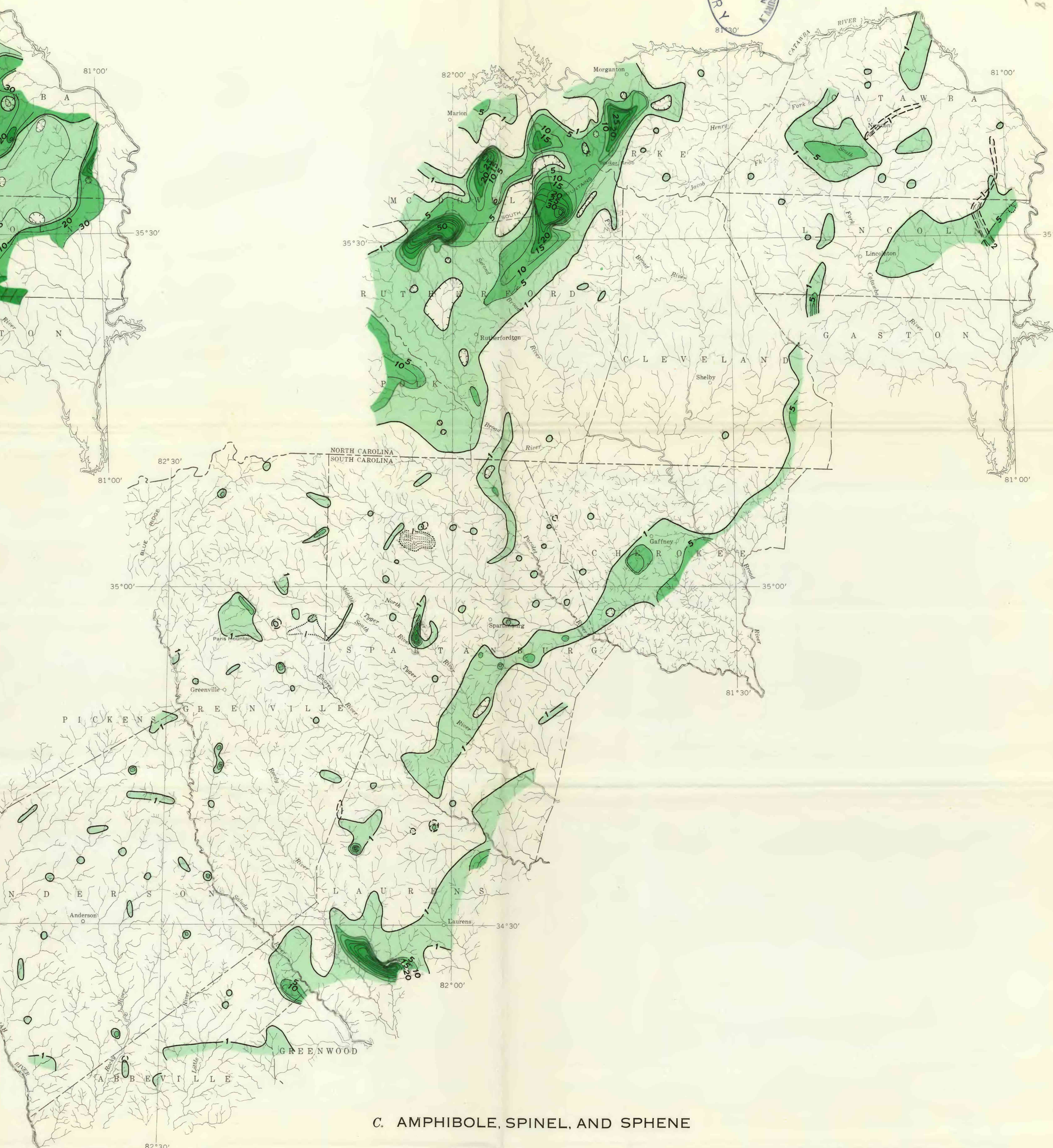
B. MAGNETITE

**EXPLANATION**

Isograms are based on percentage of mineral in concentrate free from quartz and hematite. Hashmarks enclose area of decreasing percentage of mineral. Concentrates plotted are from riffle sand or gravel and are from streams having small distributive provinces.

**Magnetite isogram**  
Contoured at 1, 5, 10 and multiples of 10 to 90 percent. Heavy contour marks 20 percent. Area boundaries, based on percentage of magnetite in concentrates, is shown by the following pattern:

<1	1-10	10-30	>30
----	------	-------	-----



C. AMPHIBOLE, SPINEL, AND SPHENE

**EXPLANATION**

Isograms are based on percentage of mineral in concentrate free from quartz and hematite. Hashmarks enclose area of decreasing percentage of mineral. Concentrates plotted are from riffle sand or gravel and are from streams having small distributive provinces.

**Amphibole isogram**  
Contoured at 1, 5, multiples of 5 to 20 and at 40 and 50 percent. Heavy contour marks 1 percent. Area boundaries, based on percentage of amphibole in concentrates, is shown by the following pattern:

<1	1-5	5-15	>15
----	-----	------	-----

**Spinel isogram**  
Contoured at 1, 2, 4, 5, and 8 percent. Heavy contour marks 1 percent.

**Sphene isogram**  
Contoured at 1, 2, and 3 percent. Heavy contour marks 1 percent.

Base compiled from county road maps

INTERIOR—GEOLOGICAL SURVEY, WASHINGTON, D. C.—1947—568479  
Compiled by W. C. Overstreet, A. M. White, J. W. Whitlow, P. K. Theobald, Jr., D. W. Caldwell, and N. P. Crippen

MAPS SHOWING ISOGRAMS FOR DETRITAL HEAVY MINERALS IN THE AREA BETWEEN THE SAVANNAH AND CATAWBA RIVERS  
SOUTH CAROLINA AND NORTH CAROLINA

