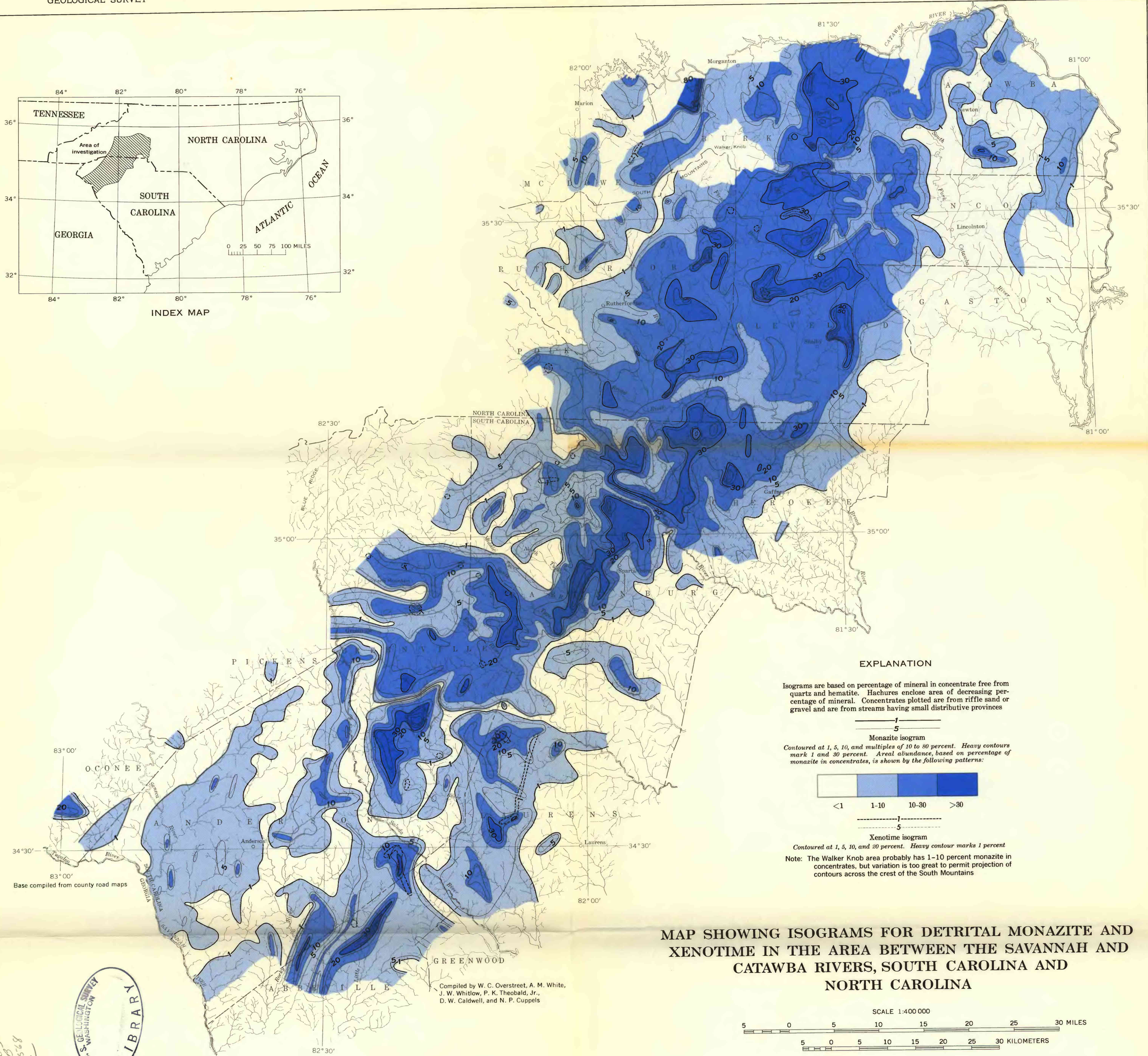


INDEX MAP



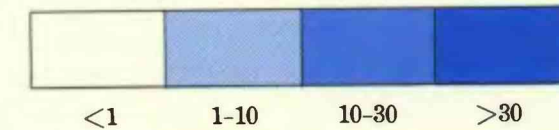
EXPLANATION

Isograms are based on percentage of mineral in concentrate free from quartz and hematite. Hachures enclose area of decreasing percentage of mineral. Concentrates plotted are from riffle sand or gravel and are from streams having small distributive provinces

1  
5

Monazite isogram

Contoured at 1, 5, 10, and multiples of 10 to 80 percent. Heavy contours mark 1 and 30 percent. Areal abundance, based on percentage of monazite in concentrates, is shown by the following patterns:



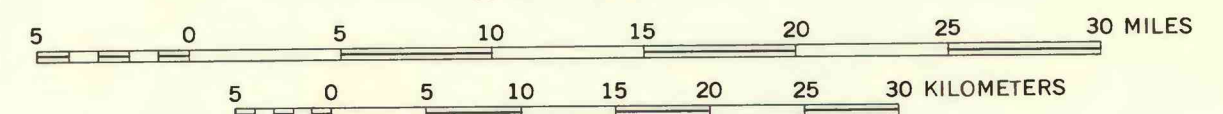
1  
5

Xenotime isogram

Contoured at 1, 5, 10, and 20 percent. Heavy contour marks 1 percent  
Note: The Walker Knob area probably has 1-10 percent monazite in concentrates, but variation is too great to permit projection of contours across the crest of the South Mountains

MAP SHOWING ISOGRAMS FOR DETRITAL MONAZITE AND XENOTIME IN THE AREA BETWEEN THE SAVANNAH AND CATAWBA RIVERS, SOUTH CAROLINA AND NORTH CAROLINA

SCALE 1:400 000



Compiled by W. C. Overstreet, A. M. White,  
J. W. Whitlow, P. K. Theobald, Jr.,  
D. W. Caldwell, and N. P. Cuppels



(200)  
88  
Nov. 568