

EXPLANATION

Contact
Dashed where approximately located; short dashed where gradational

Fault
A-mc
Mudcrack in unit 13
Labeled only near cavity

Attitude of fault plane
S.N. 80°W
30°N

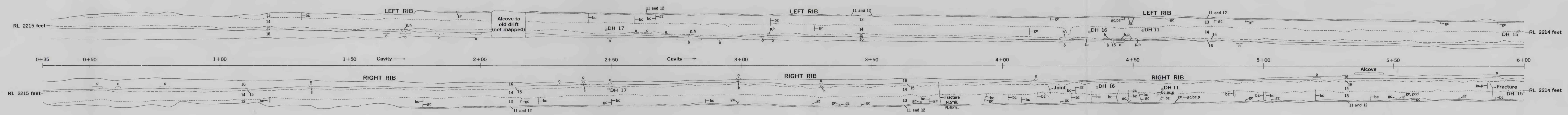
Direction of movement along fault plane
S.N. 40°W, trend
30°N, plunge

Station number
4+50
Indicated distance, in feet, measured from center of shaft
(1+00=100 ft)

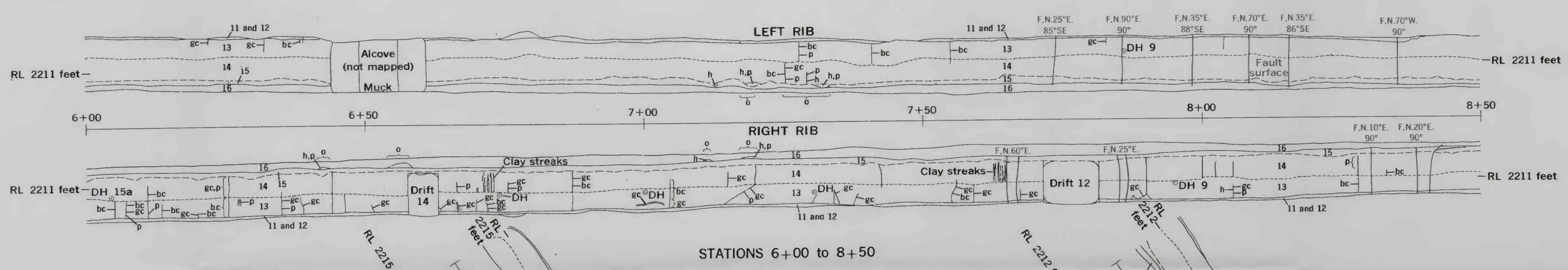
IB, intrusive breccia of granulated salt fragments in matrix of black melted salt
M, black melt
bc, brown clay
gc, gray clay
p, polyhalite
o, clay at base of polyhalite missing
h, secondary or late-forming halite
RL, reference line for pre-shot altitude of 2212.89 feet; postshot altitude ranges from 2210 to 2219 feet
c, corner
DH, drill hole

Numbers 10, 11, 12, 13, 14, 15, and 16 are stratigraphic units explained in text

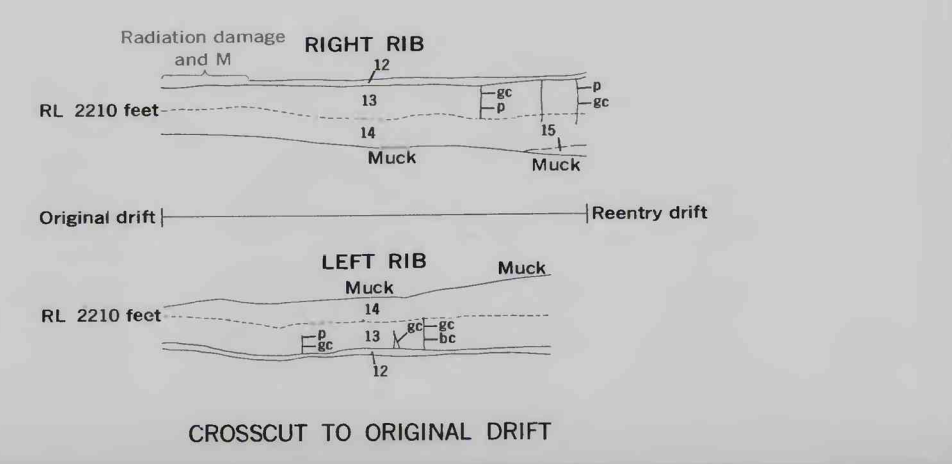
NOTE: Both rib (wall) projections are rotated outward to a horizontal plane along the lines that join their bases to the sill (floor).



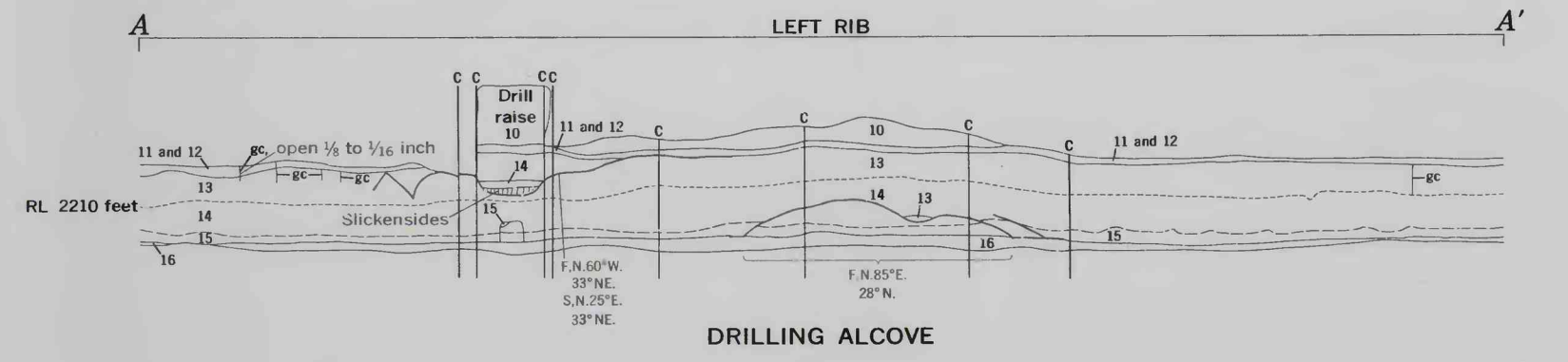
STATIONS 0+35 to 6+00



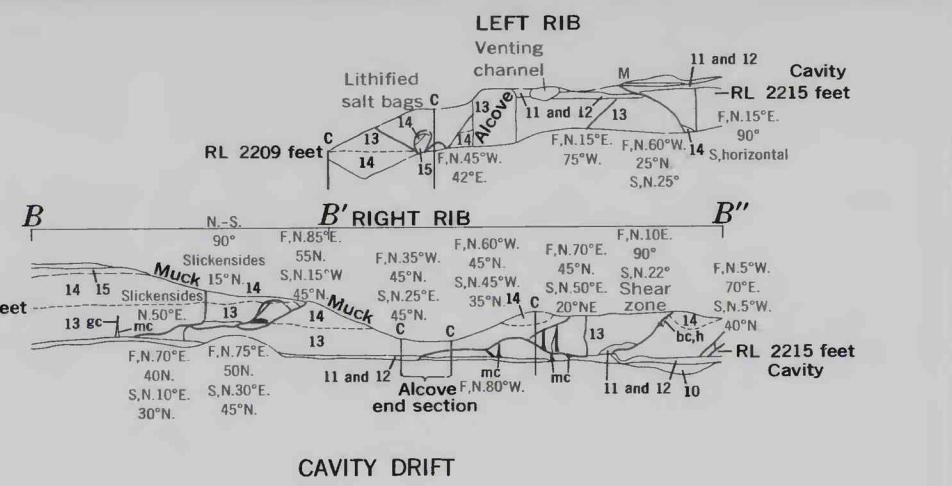
STATIONS 6+00 to 8+50



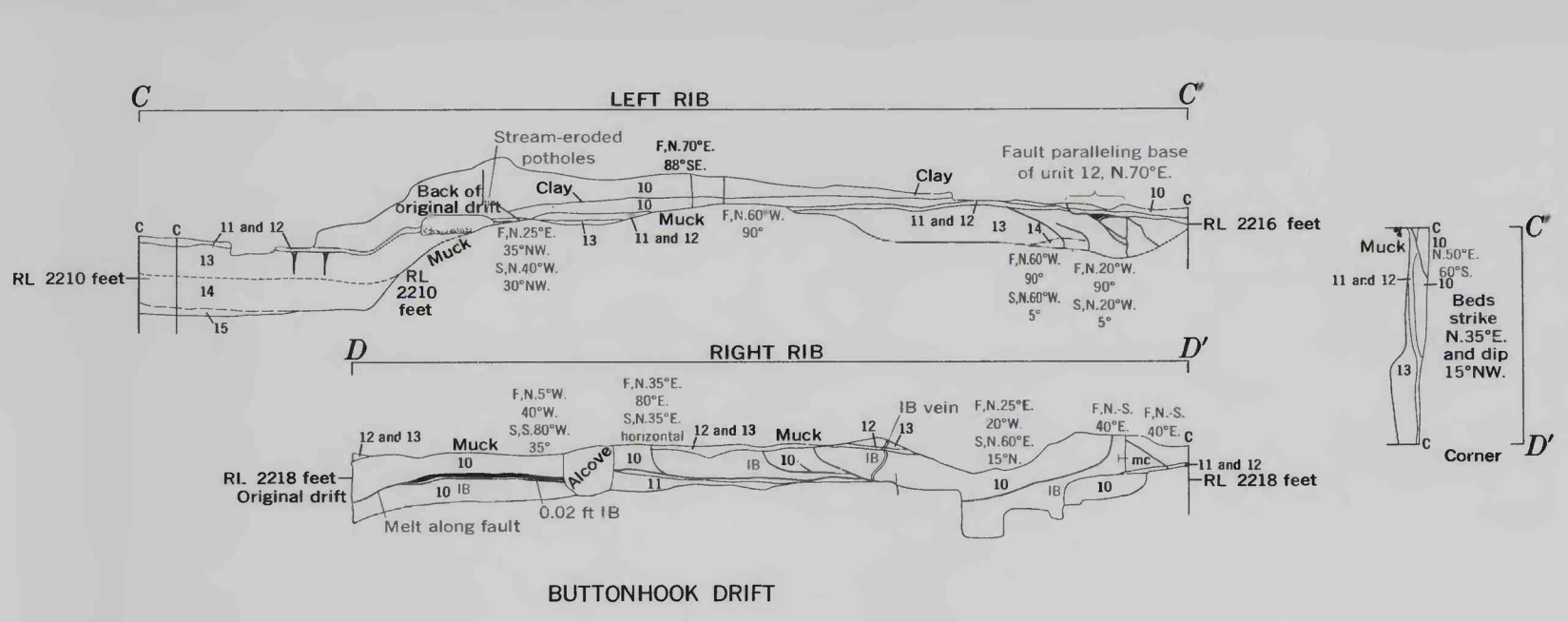
CROSSCUT TO ORIGINAL DRIFT



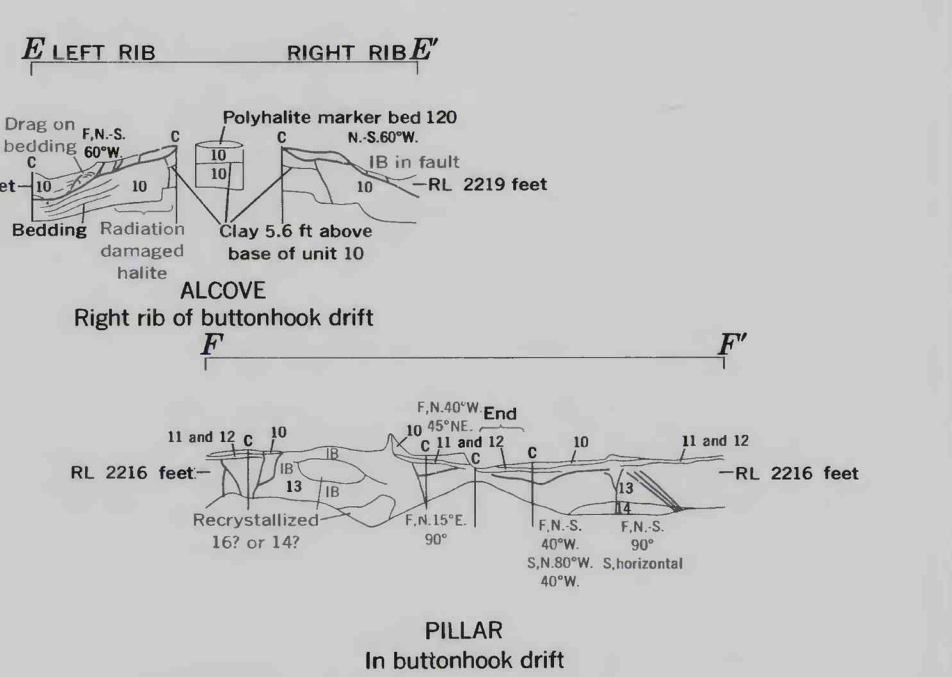
DRILLING ALCOVE



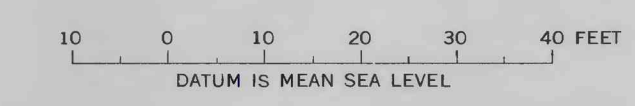
CAVITY DRIFT



BUTTONHOOK DRIFT



PILLAR In buttonhook drift



GEOLOGIC SECTIONS