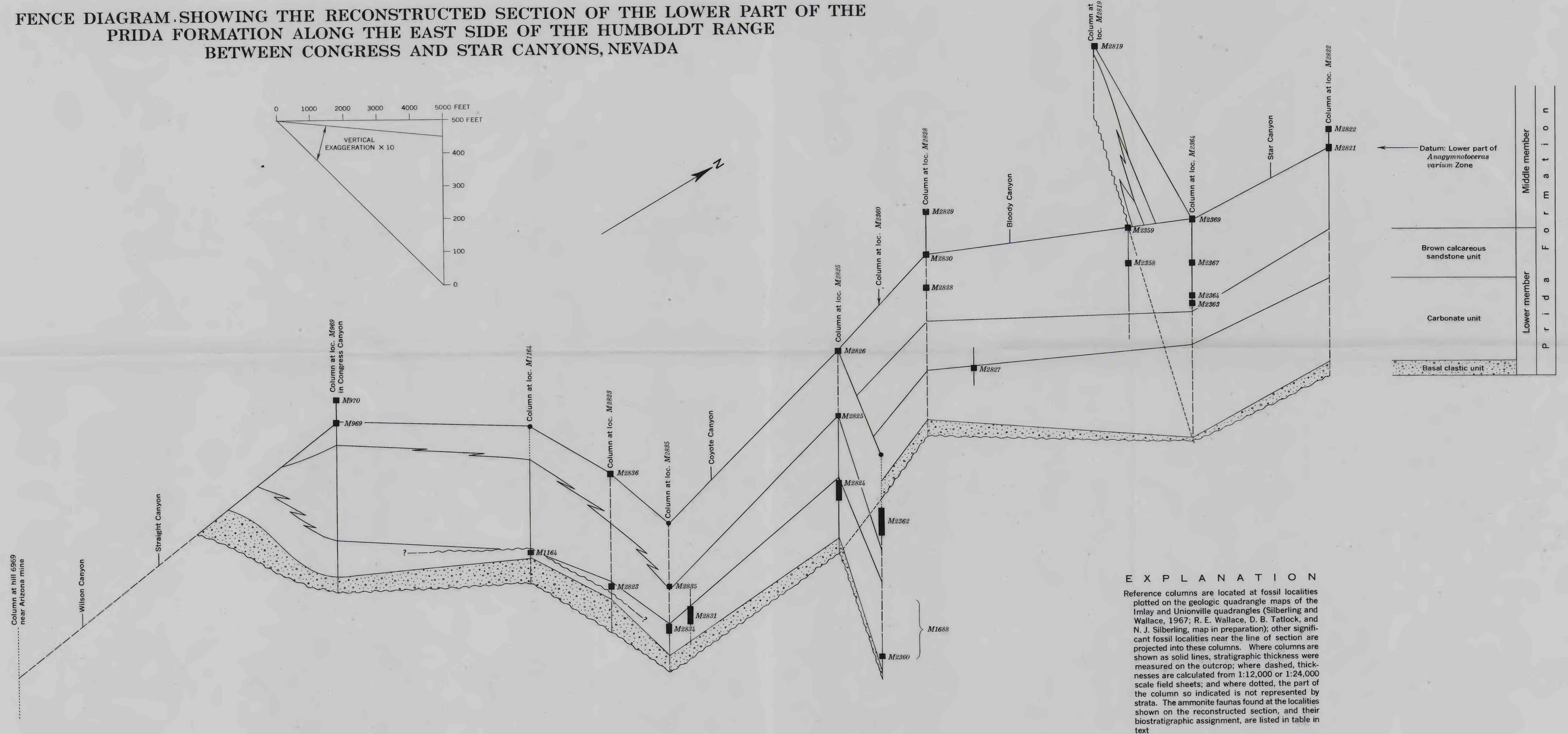


FENCE DIAGRAM SHOWING THE RECONSTRUCTED SECTION OF THE LOWER PART OF THE PRIDA FORMATION ALONG THE EAST SIDE OF THE HUMBOLDT RANGE BETWEEN CONGRESS AND STAR CANYONS, NEVADA



EXPLANATION

Reference columns are located at fossil localities plotted on the geologic quadrangle maps of the Imlay and Unionville quadrangles (Silberling and Wallace, 1967; R. E. Wallace, D. B. Tatlock, and N. J. Silberling, map in preparation); other significant fossil localities near the line of section are projected into these columns. Where columns are shown as solid lines, stratigraphic thickness were measured on the outcrop; where dashed, thicknesses are calculated from 1:12,000 or 1:24,000 scale field sheets; and where dotted, the part of the column so indicated is not represented by strata. The ammonite faunas found at the localities shown on the reconstructed section, and their biostratigraphic assignment, are listed in table in text