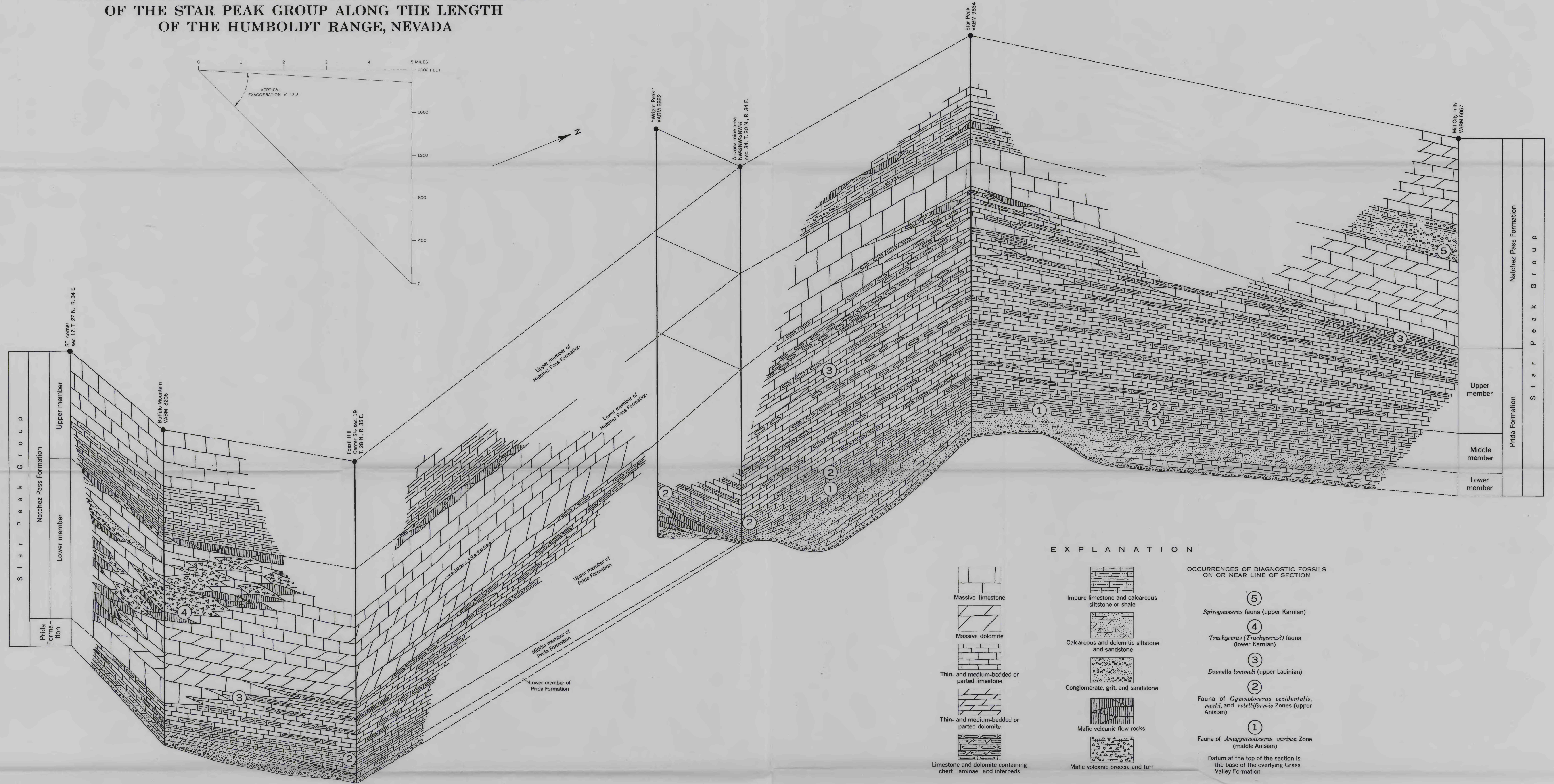


FENCE DIAGRAM SHOWING THE RECONSTRUCTED SECTION
OF THE STAR PEAK GROUP ALONG THE LENGTH
OF THE HUMBOLDT RANGE, NEVADA



EXPLANATION

- | | | |
|--|--|--|
| <p>Massive limestone</p> <p>Massive dolomite</p> <p>Thin- and medium-bedded or parted limestone</p> <p>Thin- and medium-bedded or parted dolomite</p> <p>Limestone and dolomite containing chert laminae and interbeds</p> | <p>Impure limestone and calcareous siltstone or shale</p> <p>Calcareous and dolomitic siltstone and sandstone</p> <p>Conglomerate, grit, and sandstone</p> <p>Mafic volcanic flow rocks</p> <p>Mafic volcanic breccia and tuff</p> | <p>OCCURRENCES OF DIAGNOSTIC FOSSILS ON OR NEAR LINE OF SECTION</p> <p>⑤
<i>Spirogonoceras</i> fauna (upper Karnian)</p> <p>④
<i>Trachyceras</i> (<i>Trachyceras</i>?) fauna (lower Karnian)</p> <p>③
<i>Daonella lommeti</i> (upper Ladinian)</p> <p>②
Fauna of <i>Gymnotoceras occidentalis</i>, <i>meeki</i>, and <i>rotelliformis</i> Zones (upper Anisian)</p> <p>①
Fauna of <i>Anagymnotoceras varium</i> Zone (middle Anisian)</p> <p>Datum at the top of the section is the base of the overlying Grass Valley Formation</p> |
|--|--|--|