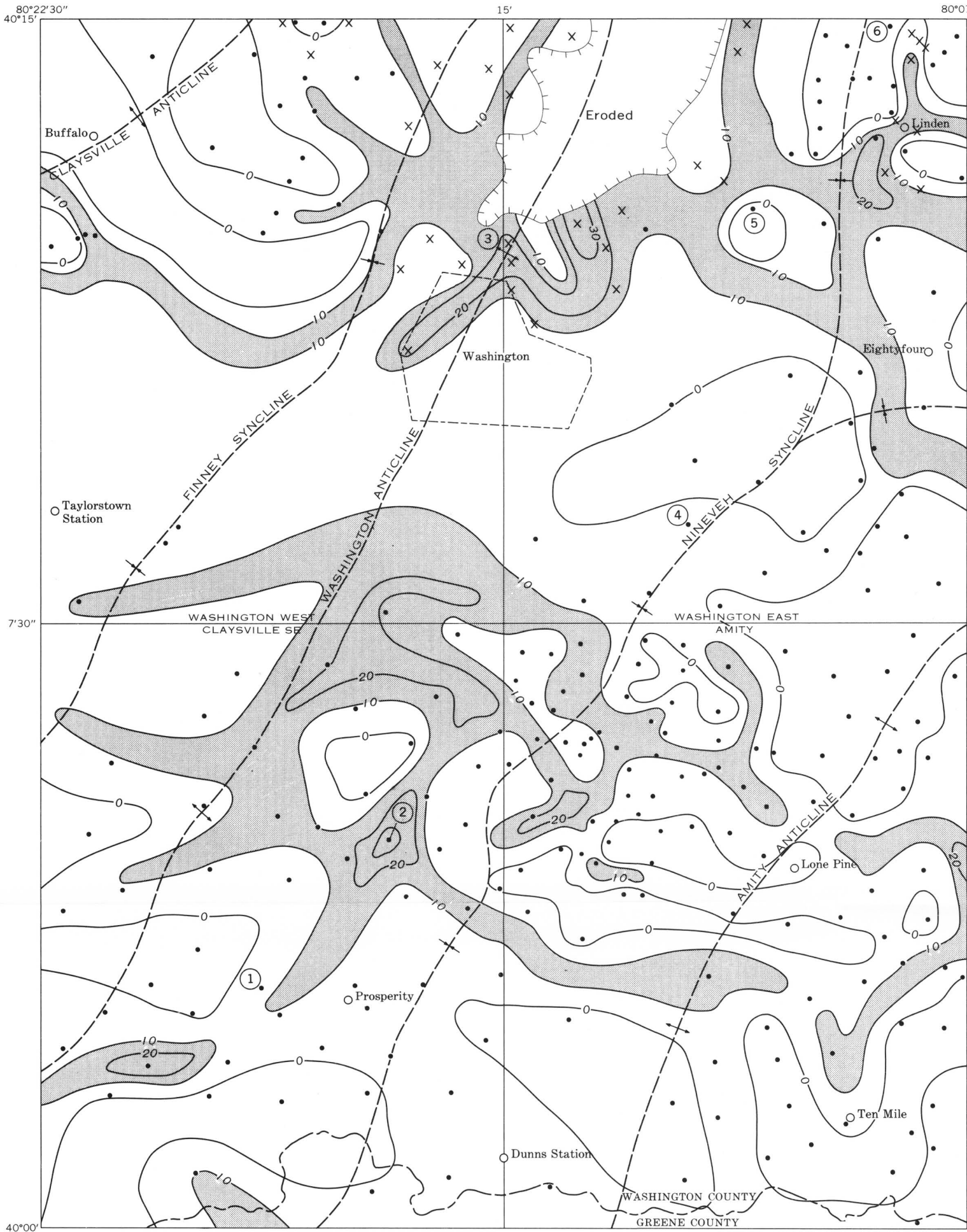


UNIONTOWN FORMATION



D. LOWER MEMBER



E. UPPER MEMBER

EXPLANATION

Thickness line, in feet
Position uncertain in southern half of
Washington West quadrangle

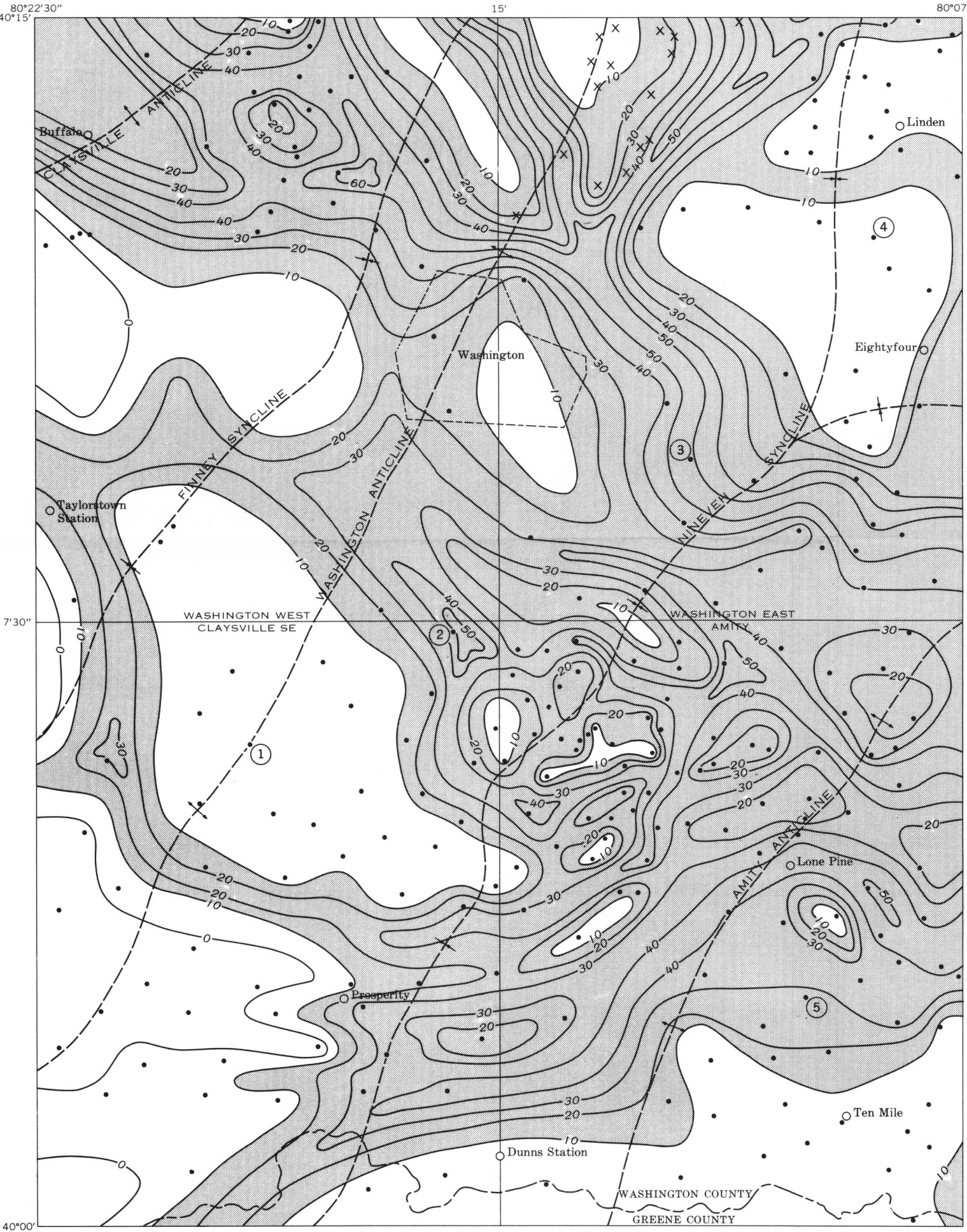
Area of thickest sandstone within a member
Area where no sandstone is indicated may
contain lenticular beds less than 5 feet thick
NOTE.—The Sewickley Member of the Pittsburgh
Formation contains no discrete sandstone

Anticline Fold axes Syncline
Core hole Outcrop
Data points
Number indicates location of stratigraphic
section shown on lithofacies map on plate 3

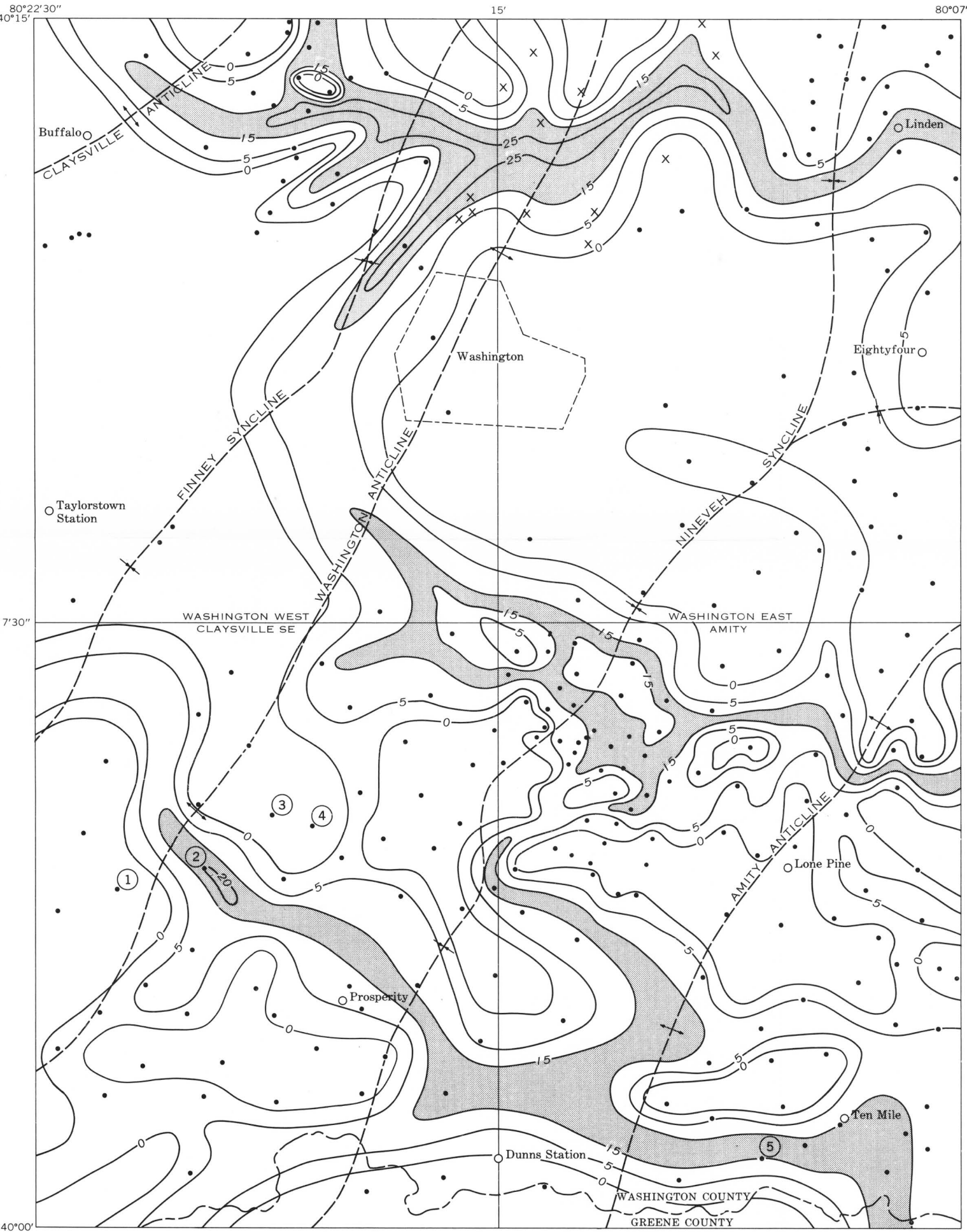
Area where member has been removed by
post-Early Permian erosion

0 5 MILES
0 5 KILOMETERS

PITTSBURGH FORMATION



A. LOWER AND REDSTONE MEMBERS



B. FISHPOT MEMBER



C. UPPER MEMBER

INTERIOR—GEOLOGICAL SURVEY, WASHINGTON, D.C.
1970—G48351