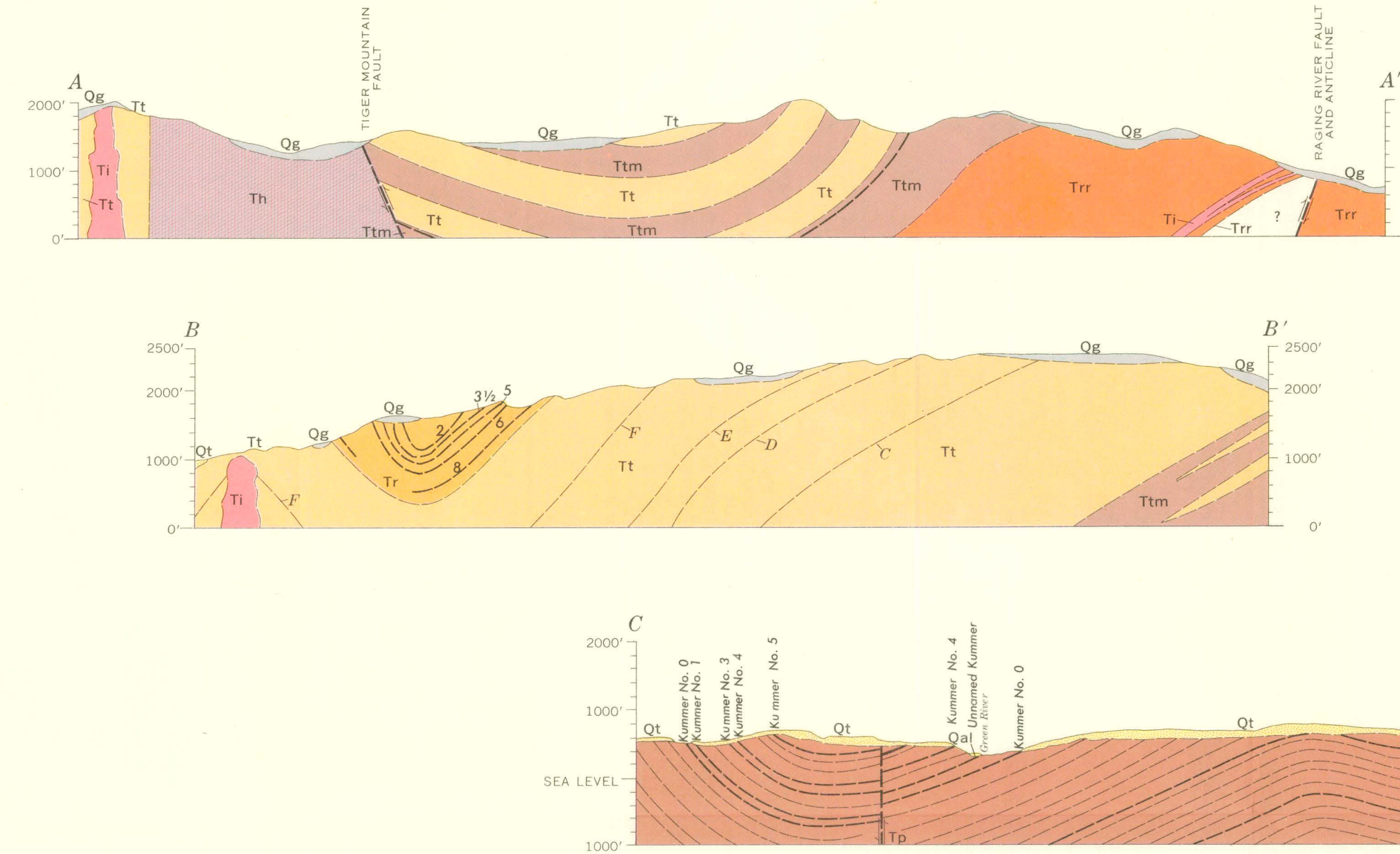
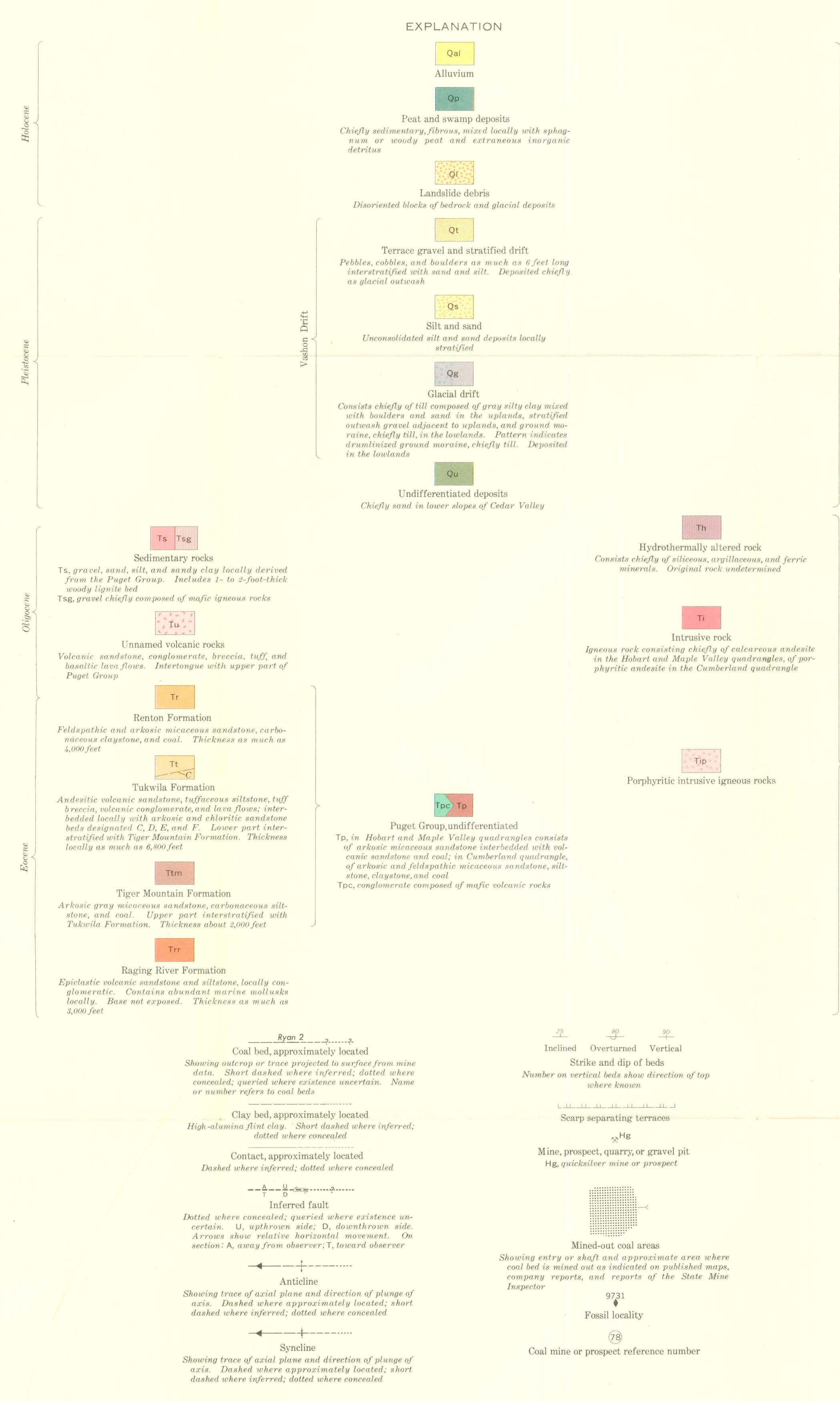
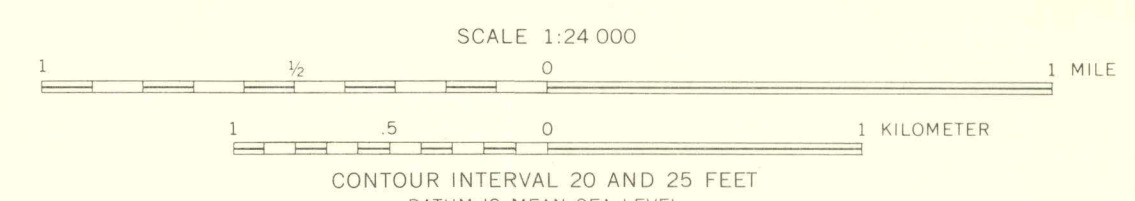


Base from U. S. Geological Survey
Cumberland and Hobart, 1953, and
Maple Valley, 1949
15,000-foot grid based on Washington
coordinate system, north zone



GEOLOGIC MAP OF THE CUMBERLAND, HOBART, AND MAPLE VALLEY QUADRANGLES, KING COUNTY, WASHINGTON



Geology by A. A. Wynn and J. D. Vane, assisted
by P. J. Palmer, 1959, and by J. D. Vane and
H. D. Gower, 1960-61, assisted by C. L. Bus, 1960