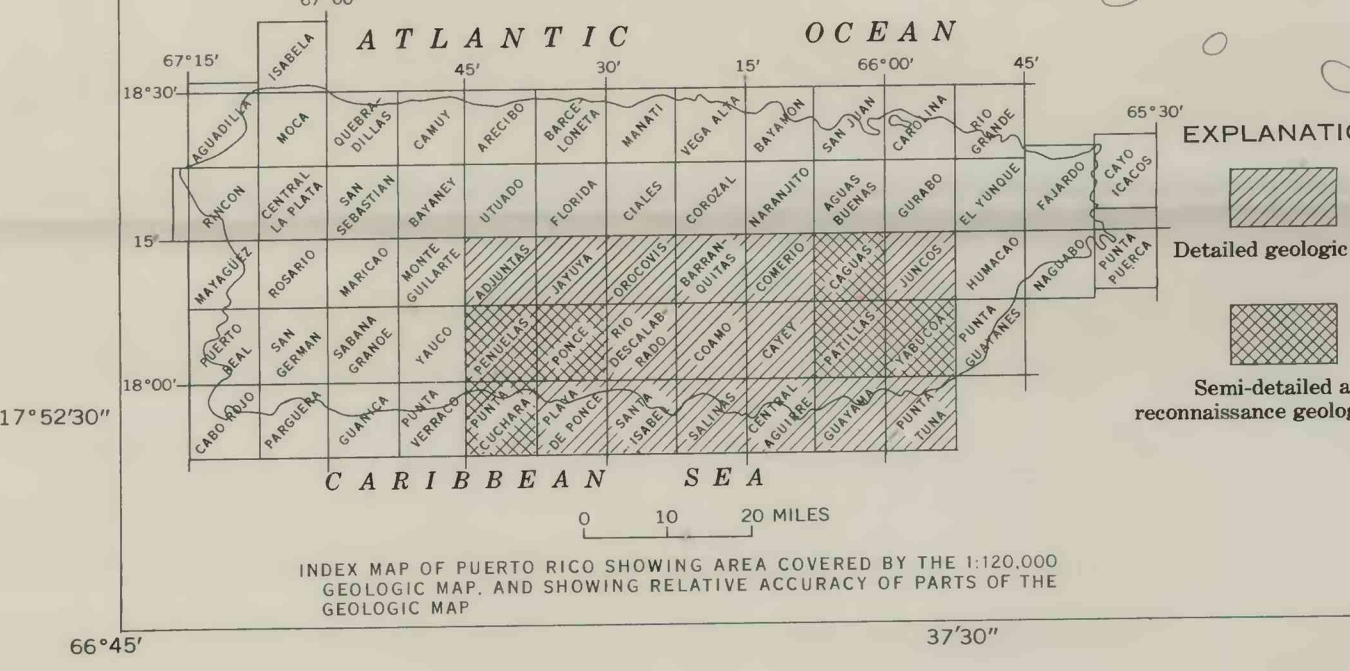


EXPLANATION

Qs	Surficial deposits	QUATERNARY
Tpu, Tpl	Ponce Limestone	TERTIARY
Tpl, lower member		
Tjd	Juana Diaz Formation	CRETACEOUS OR TERTIARY
M	Metamorphosed volcanic rock	
H	Hydrothermally altered rock	CRETACEOUS AND TERTIARY
I	Intrusive igneous rocks	
Tja, Tjab	Jacaguas Group	CRETACEOUS
Tjab, basal red, conglomeratic rocks		
Kg	Lago Garzas Formation and correlative rocks	CRETACEOUS
Ky	Yauco Mudstone	
Kp	Pozas Formation	CRETACEOUS
Kcm	Coamo and Maravillas sequence	
Kc	Cariblanco and Achite sequence	CRETACEOUS AND YOUNGER
Kr	Robles and Rio Orocovis sequence	
Kpr	Pre-Robles sequence	CRETACEOUS AND YOUNGER
B	Fault breccia	



Base from U.S. Geological Survey topographic map of Puerto Rico, 1951

SCALE 1:120,000

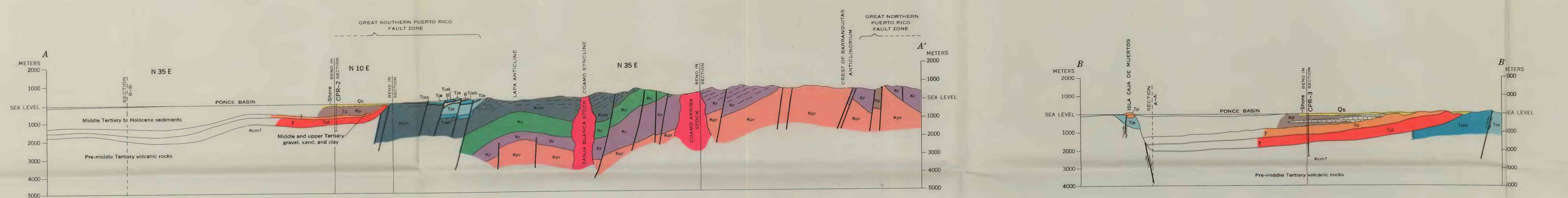
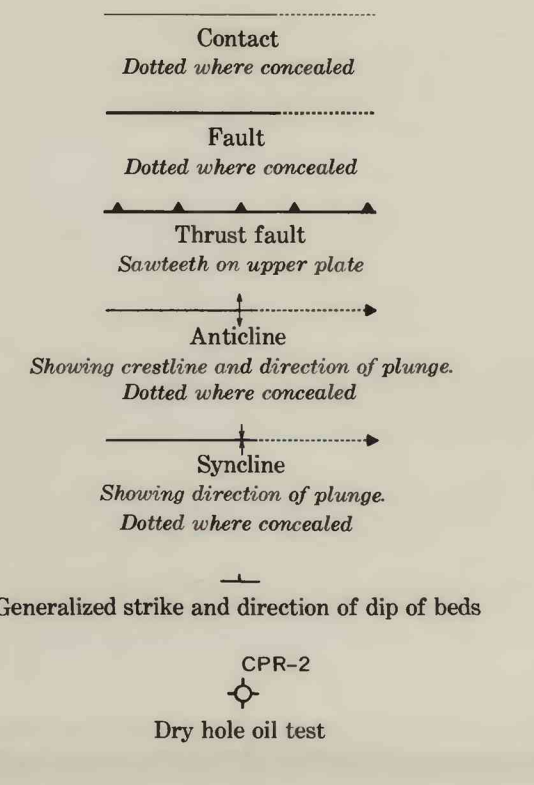
CONTOUR INTERVAL 50 METERS
BATHYMETRY IN FATHOMS

Interior—Geological Survey, Washington, D.C. 971-68167

Geology compiled by Lynn Glover III, R.P. Briggs, and P. H. Mattson, 1967

SOURCES OF DATA

- Berryhill (1960)
- Berryhill and Glover (1960)
- Briggs (1964)
- Briggs and Gelabert (1962)
- Briggs and Pease (1960)
- Broedel (1961)
- Glover (1964a)
- Glover (1961b)
- Glover and Mattson (1960)
- Kaye (1957)
- Pease and Briggs (1960)
- Passagno (1961)
- Passagno (1962)
- U.S. Coast and Geodetic Survey, navigation charts, 1965 and earlier
- Zapp, Bergquist, and Thomas (1948)



GEOLOGIC MAP OF SOUTHEASTERN PUERTO RICO