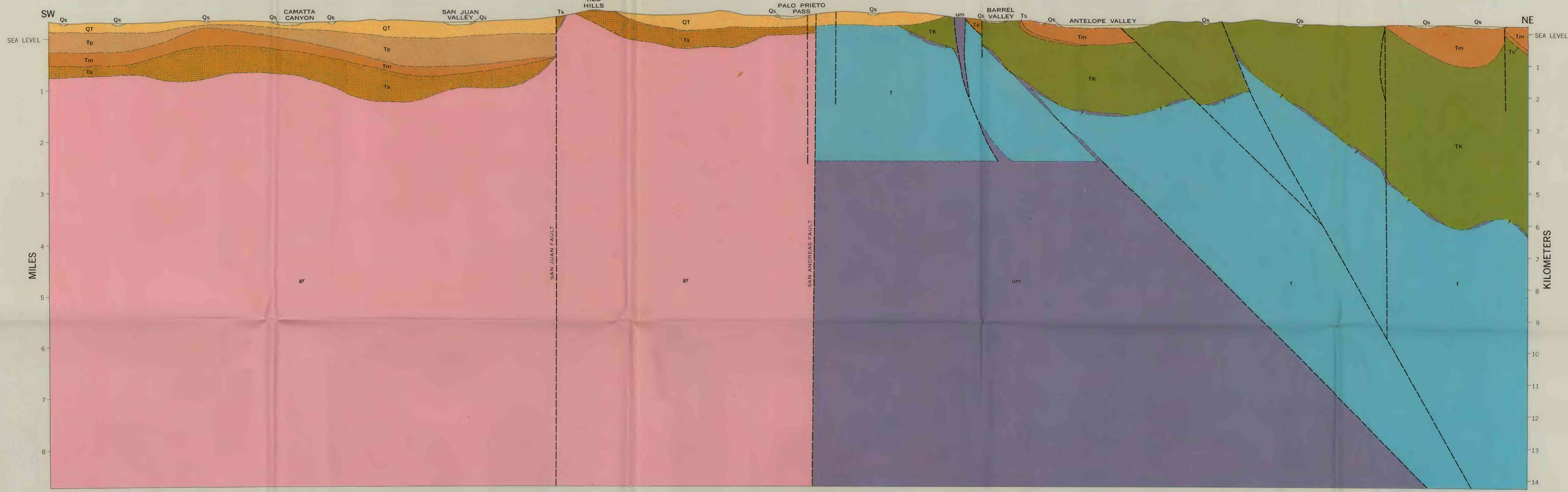


Some faults and contacts are not differentiated in sections  
Note: Units gr, um, and f are shown in lighter colors  
here than on the geologic map (plate 1)



Some faults and contacts are not differentiated in sections  
Note: Units gr, um, and f are shown in lighter colors  
here than on the geologic map (plate 1)



INTERIOR—GEOLOGICAL SURVEY, WASHINGTON, D.C.—1973-07080  
Geology compiled by T. W. Dibble, Jr., 1968-69  
Drill hole data compiled by H. C. Wagner

IDEALIZED CROSS SECTIONS, GRAVITY PROFILES, AND MAGNETIC PROFILES ACROSS THE SAN ANDREAS FAULT NEAR CHOLAME, CALIFORNIA