

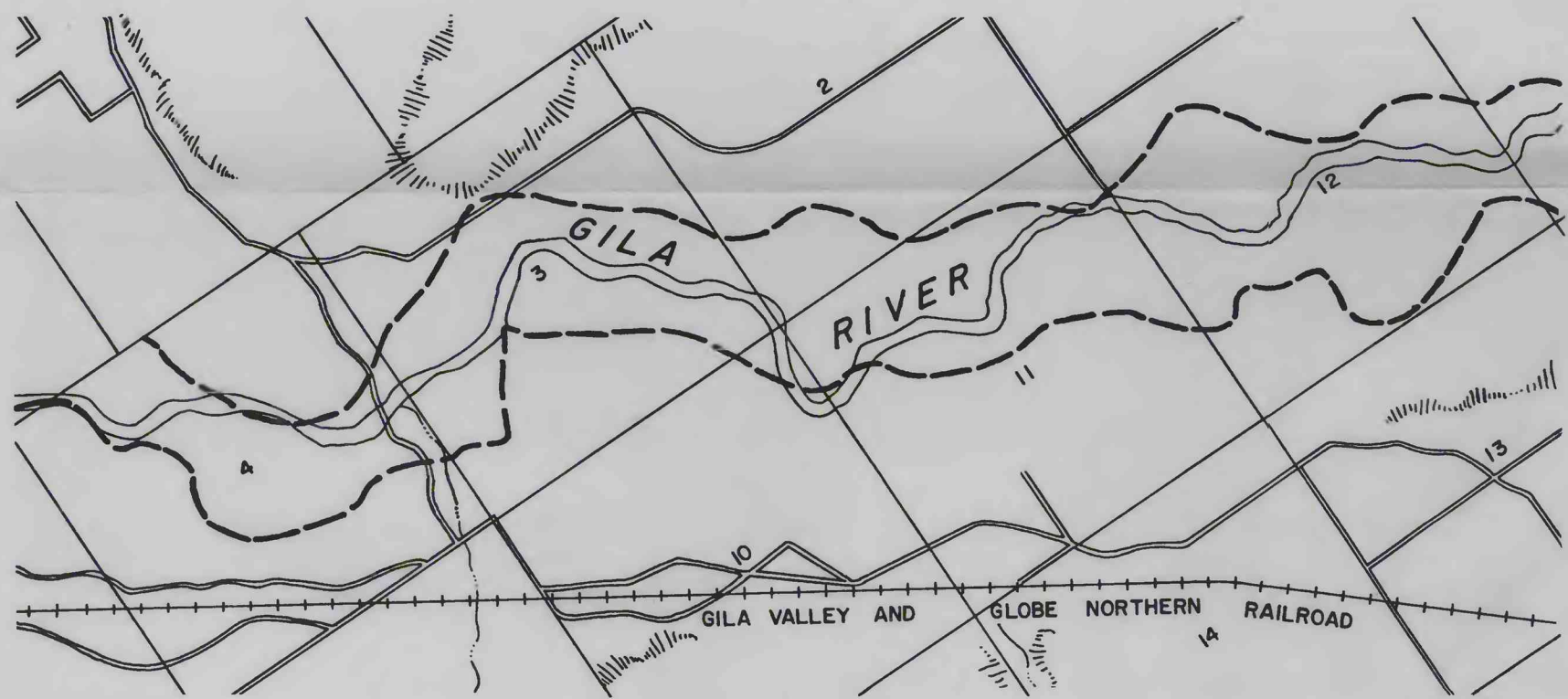
1875



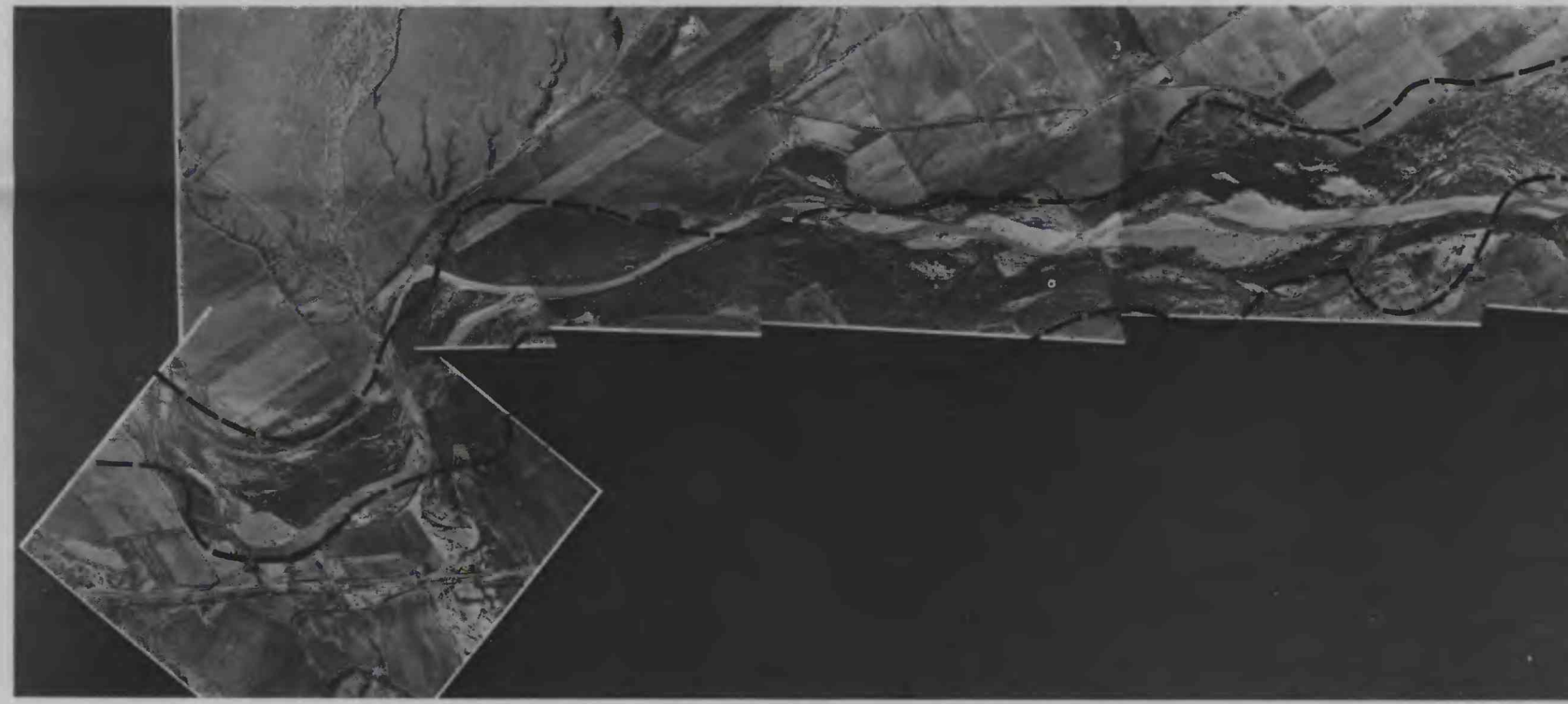
1935



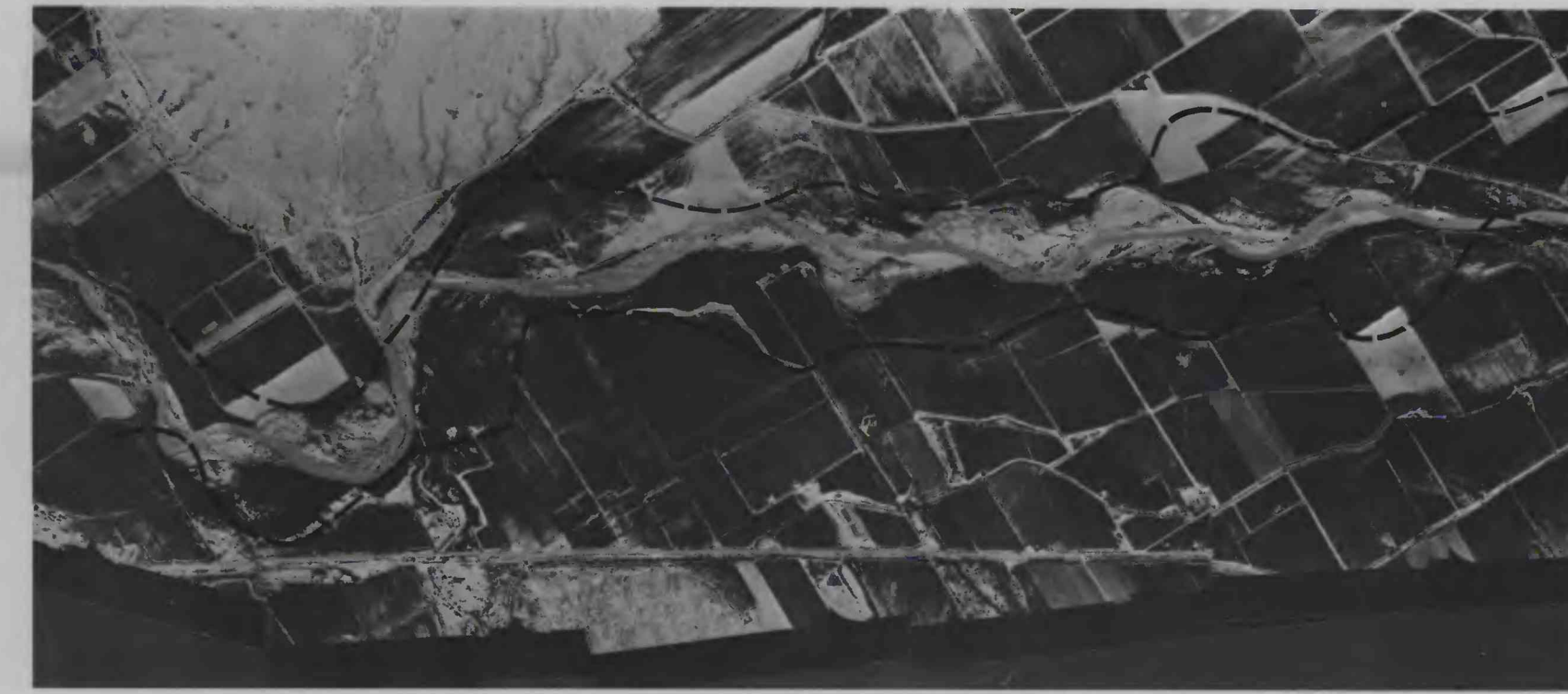
1967



1903



1943



1968



1915



1959



1919



1966

EXPLANATION

Boundary of the 1914-15 flood channel as defined by Olmstead (1919)

The major widening of the stream channel from 1903 to 1914 was caused mainly by the major winter floods of 1905 and 1906 (p. 3). The widening during 1959-66 was caused mainly by the flood of December 1965; further widening was caused by the flood of August 1967. The maps for 1875 and 1919 are from cadastral surveys and are in the files of the U.S. Bureau of Land Management, Phoenix. The map for 1903 is from a soil survey by Lapham and Neill (1904), and the map for 1915 is from the files of the U.S. Bureau of Indian Affairs, Phoenix. The aerial photographs are from the files of the U.S. Geological Survey, Tucson.

Map and aerial photograph scales are about equal  
2 inches equal approximately 1 mile

MAPS AND AERIAL PHOTOGRAPHS SHOWING CHANNEL CHANGES  
OF THE GILA RIVER NEAR PIMA, ARIZONA