

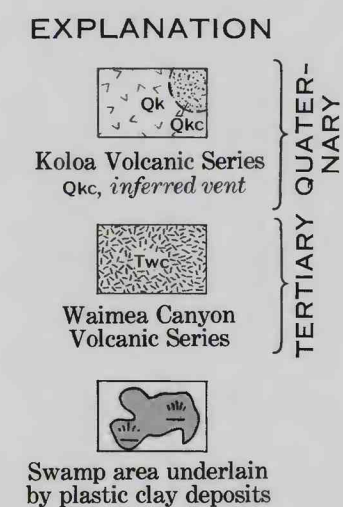
159°32'30"

21°59'30"



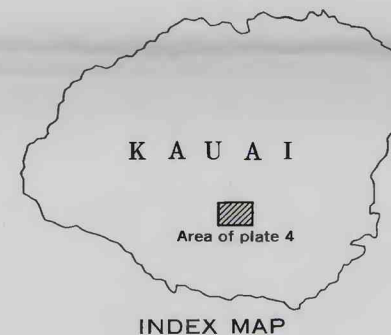
Base prepared by S. H. Patterson, modified from Koloa 7½-minute quadrangle, 1963

Geology modified from MacDonald, Davis, and Cox (1960, pl.1)

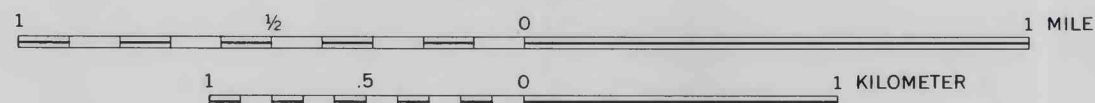


Contact
Dashed where approximately located

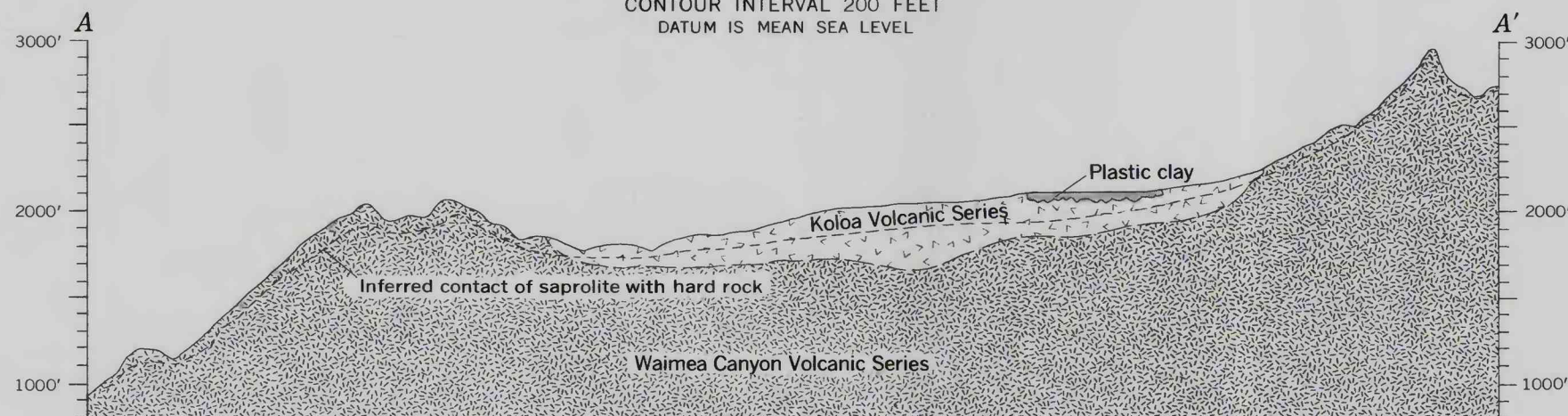
- 1
Auger hole for which logs are given in Patterson (1962, app. p. 219-223)
- 2
Auger hole for which analyses are given in the accompanying table



SCALE 1:24 000



CONTOUR INTERVAL 200 FEET
DATUM IS MEAN SEA LEVEL



VERTICAL EXAGGERATION X 2

Auger-hole logs and major chemical constituents, in percent, of samples from Kanaele Swamp, Kauai, Hawaii

[Samples analyzed by X-ray fluorescence methods by R. M. Bromery]

Auger hole	Sample depth interval (feet)	Description of materials sampled	SiO ₂	Al ₂ O ₃	Fe ₂ O ₃	TiO ₂
2	0-1	Peat, dark-brown				
	1-15	Clay, gray (2.5Y N5); gibbsite nodules as much as 1/8 inch diameter common; plastic.	29.8	34.3	4.0	5.9
	15-17	Clay, grayish-brown (2.5Y 5/2), very plastic.				
10	17	Hard rock				
	0-0.2	Peat, dark-brown				
	0.2-3	Clay, gray (2.5Y N6) plastic	35.5	32.7	4.9	5.8
	3-15	Clay, gray (2.5Y N6), very plastic; small gibbsite nodules scarce.	33.8	33.5	4.6	5.4
15-21	Clay, gray (2.5Y N6), plastic	28.0	34.0	10.3	5.7	

MAP AND SECTION SHOWING THE LOCATION OF CLAY DEPOSITS IN THE KANAELE SWAMP, KAUAI, HAWAII