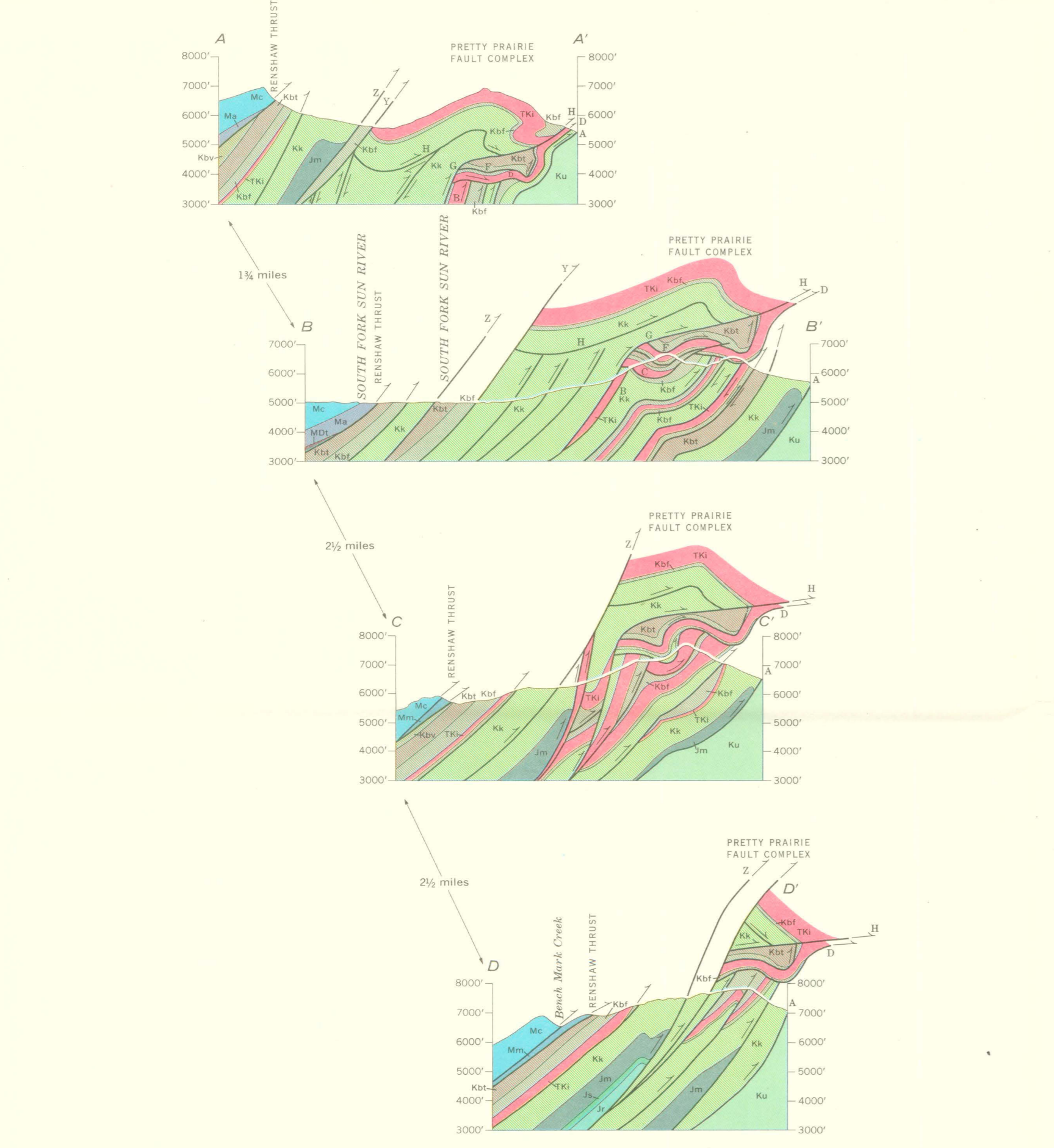
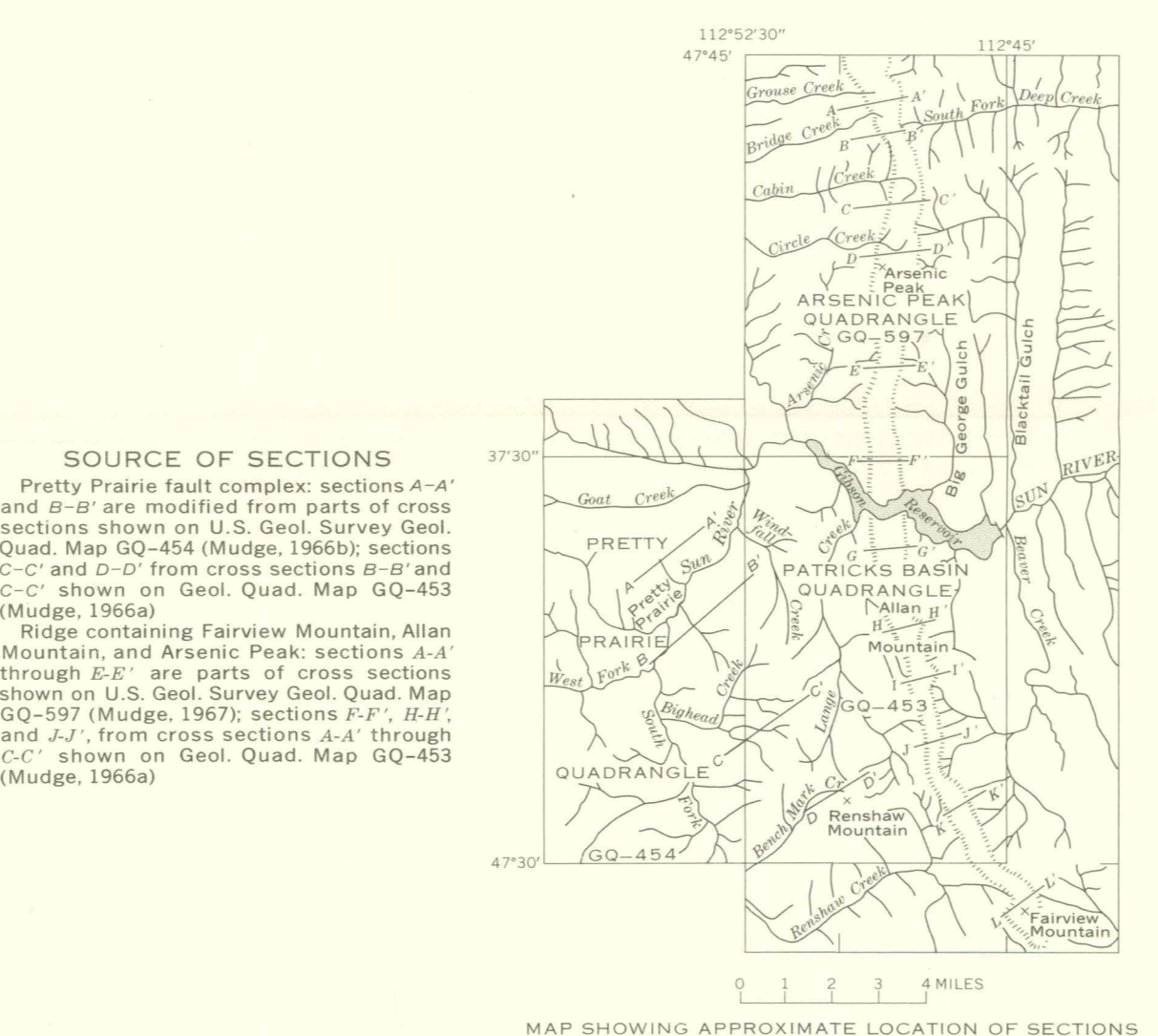
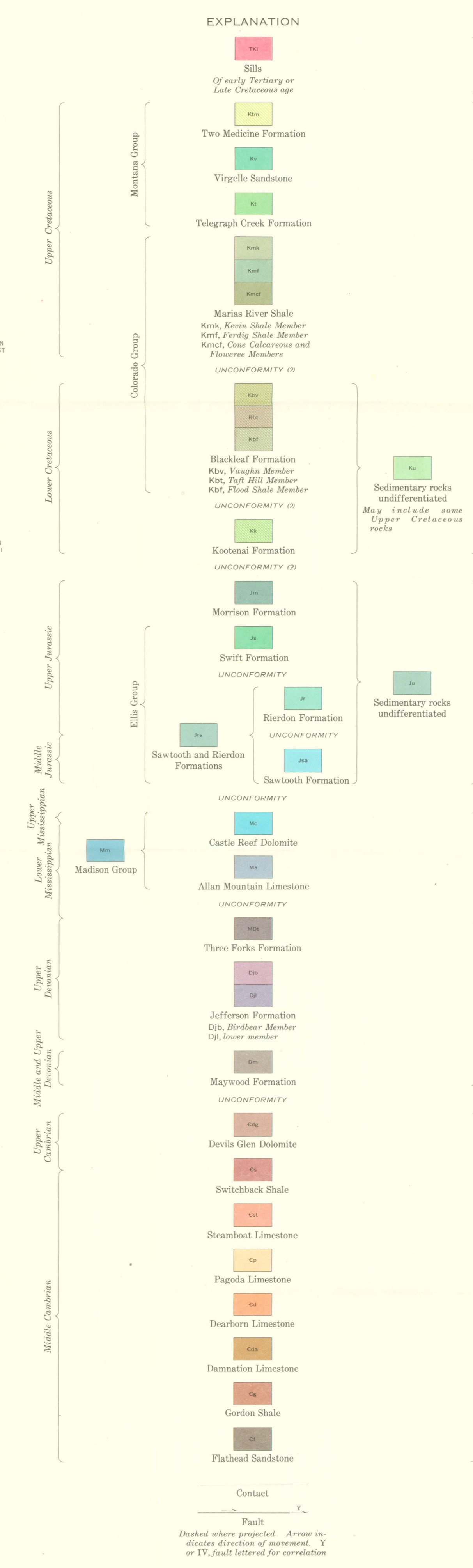


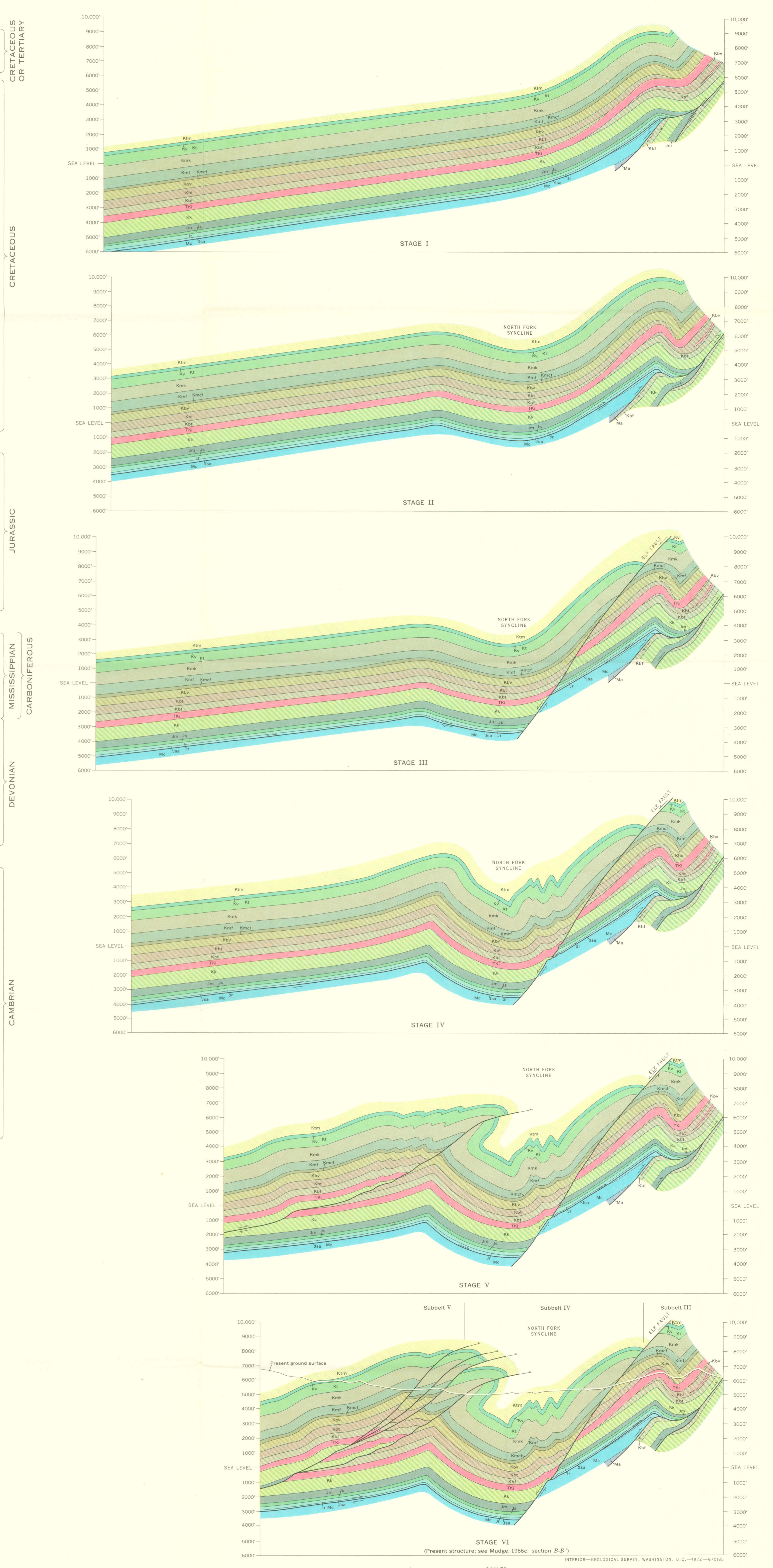
CROSS SECTIONS OF THE RIDGE CONTAINING FAIRVIEW MOUNTAIN, ALLAN MOUNTAIN, AND ARSENIC PEAK



CROSS SECTIONS OF THE PRETTY PRAIRIE FAULT COMPLEX



SOURCE OF SECTIONS
Pretty Prairie fault complex: sections A-A' and B-B' are modified from parts of cross sections shown on U.S. Geol. Survey Geol. Quad. Map GQ-454 (Mudge, 1966b); sections C-C' and D-D' from cross sections A-A' and C-C' shown on Geol. Quad. Map GQ-453 (Mudge, 1966a).
Ridge containing Fairview Mountain, Allan Mountain, and Arsenic Peak: sections A-I through E-E' are parts of cross sections shown on U.S. Geol. Survey Geol. Quad. Map GQ-597 (Mudge, 1967); sections J-J', K-K', and L-L' from cross sections A-A' through C-C' shown on Geol. Quad. Map GQ-453 (Mudge, 1966a).



PALINSPASTIC RECONSTRUCTION OF THE STRUCTURE IN SUBBELT IV AND ADJACENT PART OF SUBBELTS III AND V OF THE NORTH FORK OF THE SUN RIVER