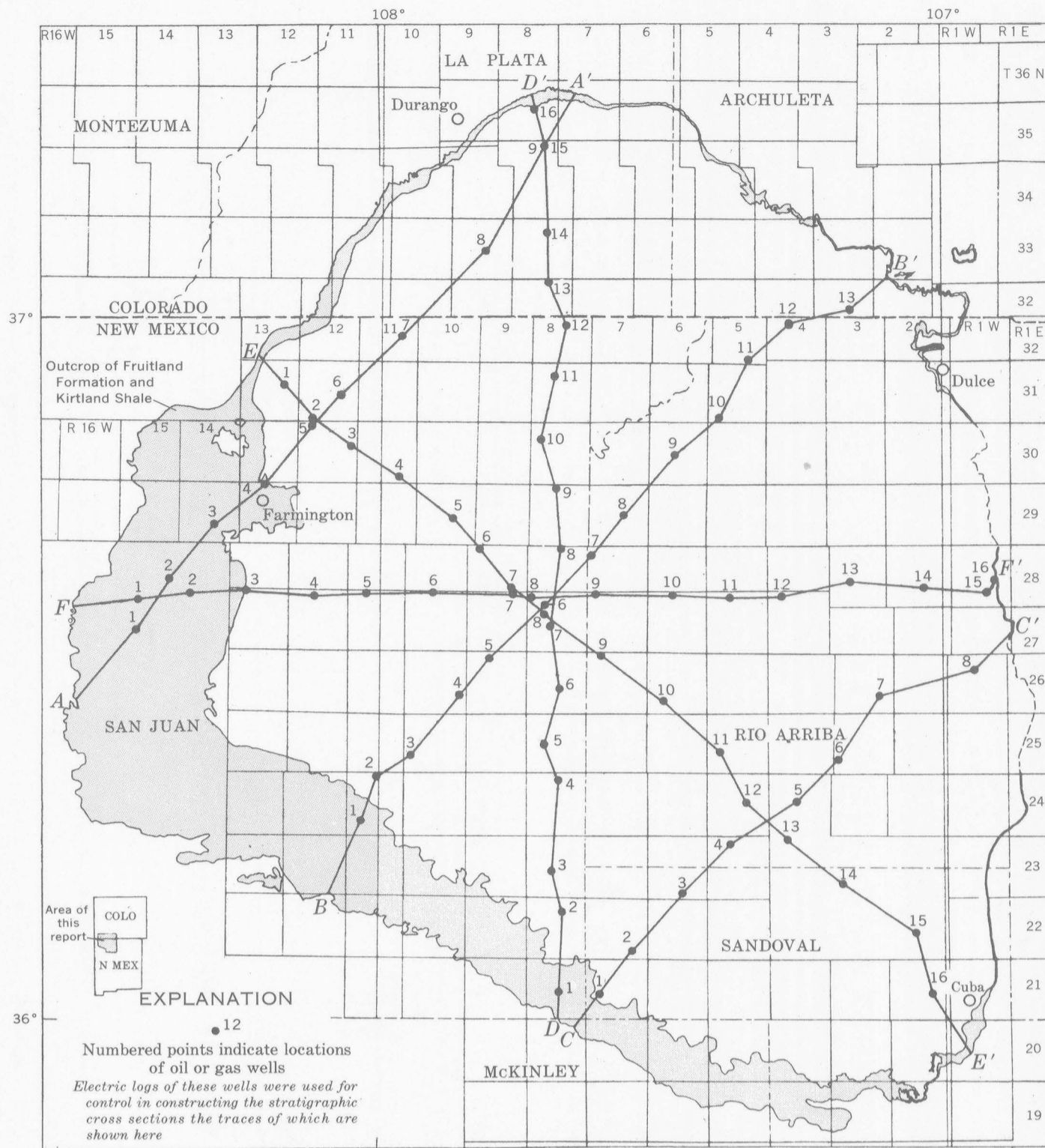
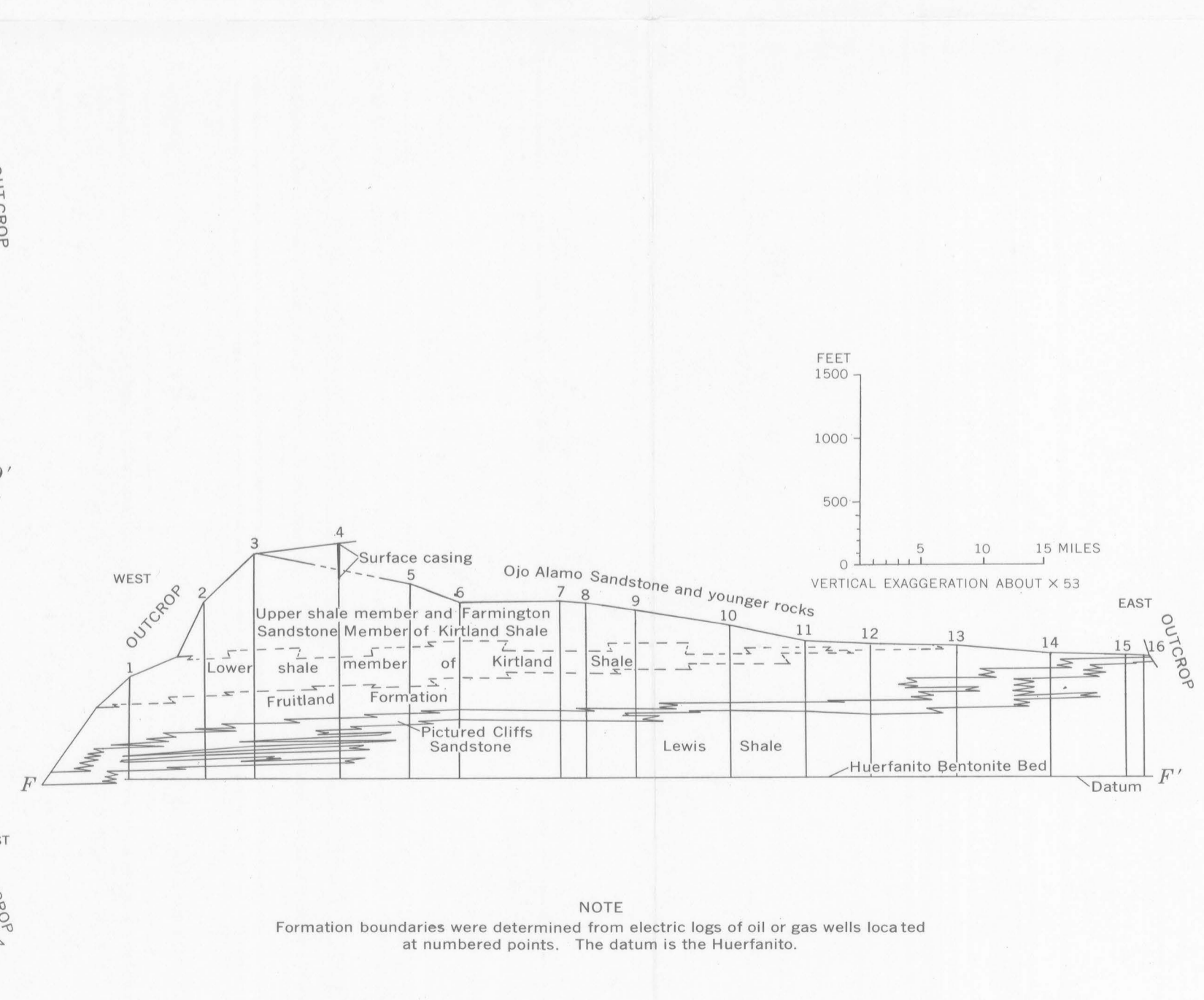
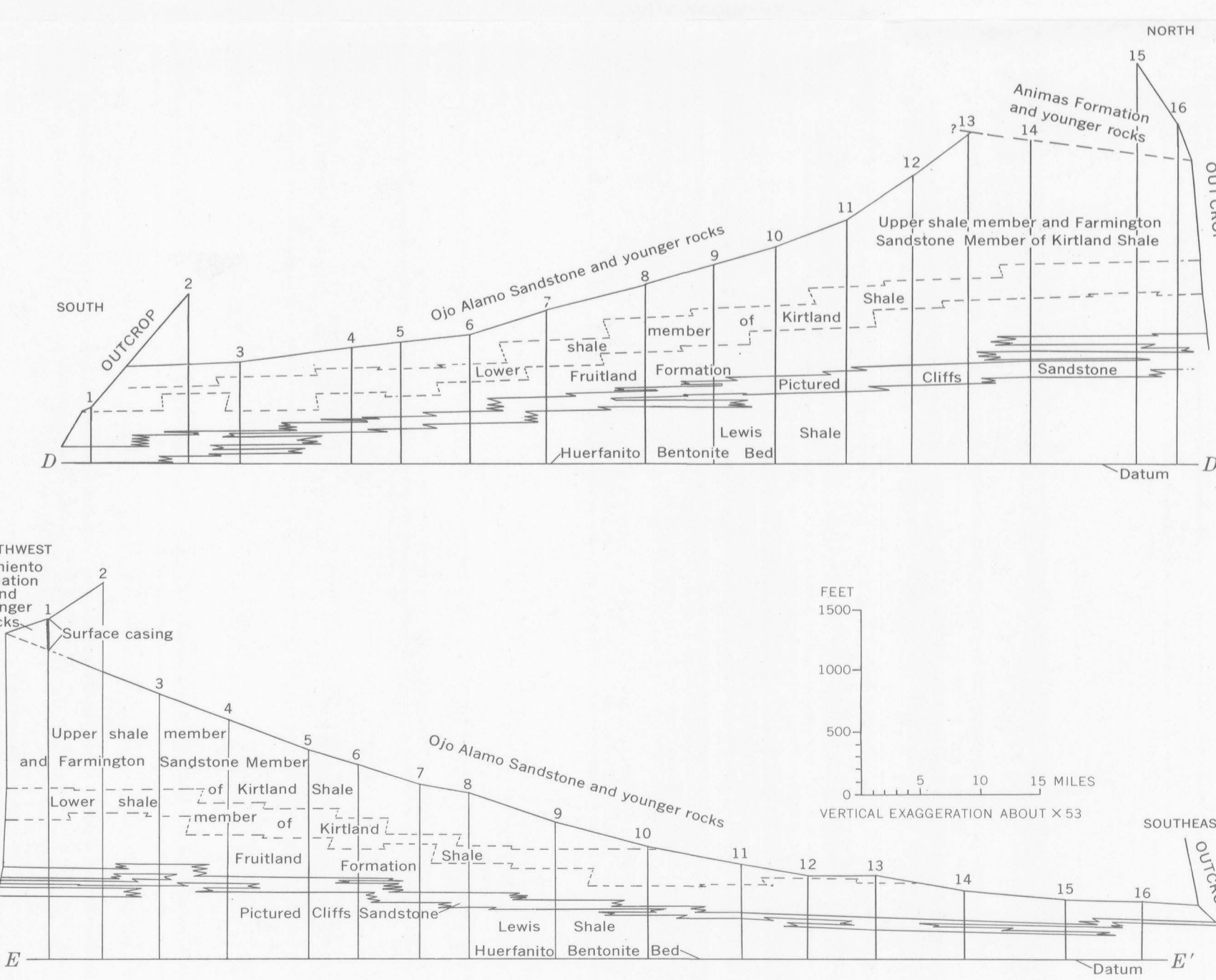
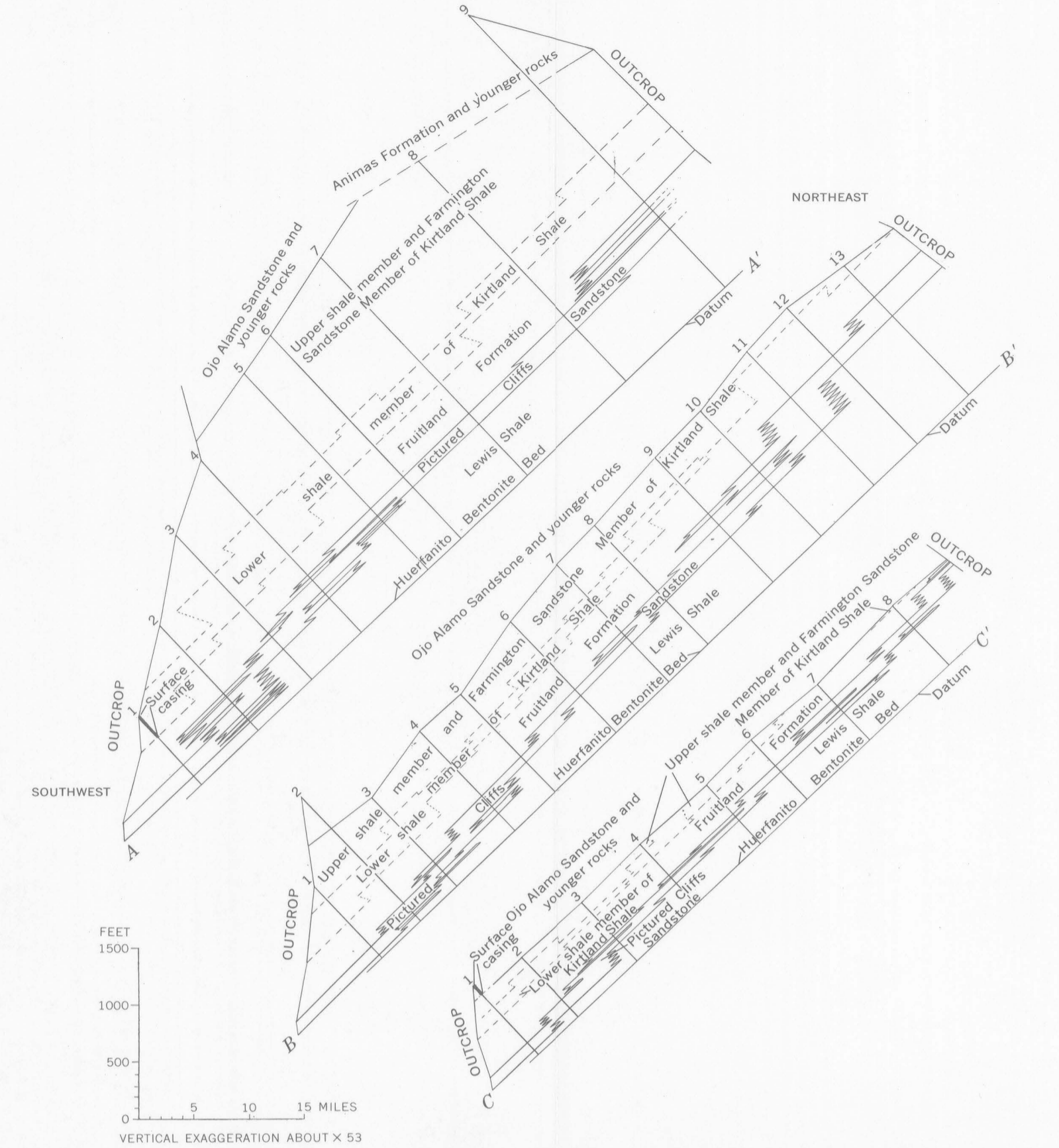


WELLS

Well No.	Company	Well name	Location			Kind of log used
			Sec.	T. N.	R. W.	
Section A-A' (SW-NE)						
New Mexico						
1	Continental Oil Co.	Cottonwood Navajo IX	29	27	15	IE
2	Walter Duncan	Gulf Navajo 1	31	28	14	IE
3	El Paso Natural Gas Products Co.	Ojo Amarillo 1	27	29	14	IE
4	Compass Exploration, Inc.	City of Farmington 1-4	4	29	13	IE
5	Pan American Petroleum Corp.	L. C. Kelly 2	5	30	12	IE
6	Aztec Oil and Gas Co.	East 6	23	31	12	IE
7	El Paso Natural Gas Co.	Barnes 7	23	32	11	E
Colorado						
8	Compass Exploration, Inc., and Mountain States Development Co.	Ute 1-22	22	33	9	IE
9	Pan American Petroleum Corp.	J. M. Keyes 1	2	34	8	E
Section B-B' (SW-NE)						
New Mexico						
1	Magnolia Petroleum Co.	Beamon Federal 1	29	24	11	E
2	Davis Oil Corp.	Fannin Govt. 1	3	24	11	IE
3	Sun Oil Co.	Heirs of Ith-Hal-E-Wood 1	19	25	10	IE
4	El Paso Natural Gas Co.	Huerfano 120	25	26	10	IE
5	Turner and Webb	Huerfano 60-4	4	26	9	IE
6	El Paso Natural Gas Co.	Schwerdtfeger 13-A	8	27	8	E
7	do	San Juan 28-7 30	18	28	7	E
8	do	San Juan 29-7 65	22	29	7	E
9	do	Barron Kidd 7	21	30	6	E
10	do	Rosa Unit 24	32	31	5	E
11	Stanolind Oil and Gas Co.	San Juan 32-5 2	35	32	5	E
12	Phillips Petroleum Co.	Mesa 32-4 2-16	16	32	4	E
Colorado						
13	Stanolind Oil and Gas Co.	Southern Ute 1	22	32	3	E
Section C-C' (SW-NE)						
New Mexico						
1	Davis Oil Corp.	Govt. Co-op 1	20	21	7	IE
2	Northwest Production Corp.	Sandoval 22-7 2-35	35	22	7	IE
3	Texas National Petroleum Co.	Maddox FA 1	34	23	6	E
4	Humble Oil and Refining Co.	Jicarilla C 1	4	23	5	E
5	Amerada Petroleum Corp.	Jicarilla Apache G-1	16	24	4	IE
6	Skelly Oil Co.	L. L. McConnell 1	30	25	3	E
7	Honolulu Oil Corp.	Jicarilla A 1	26	26	3	IE
8	Bolack-Greer, et al.	Bolack 1	9	26	1	IE
Section D-D' (S-N)						
New Mexico						
1	Ray McGlothlin	Federal 1	22	21	8	IE
2	Humble Oil and Refining Co.	South Chaco 4	10	22	8	IE
3	Great Western Drilling Co.	Chaco Canyon 3	21	23	8	E
4	Century Drilling Co.	Century Royal Federal 1-3	3	24	8	IE
5	Western Natural Gas Co.	Keeling Federal 1	20	25	8	IE
6	Southern Union Gas Co.	Hodges 7	22	26	8	E
7	El Paso Natural Gas Co.	Florence 14-D	21	27	8	E
8	do	Jones 1-A	10	28	8	E
9	Southern Union Gas Co.	Hill 2	4	29	8	E
10	Delhi Oil Corp.	C. J. Moore 1	8	30	8	E
11	El Paso Natural Gas Co.	San Juan 32-8 13-9	9	31	8	E
12	Phillips Petroleum Co.	Mesa 32-8 4-15	15	32	8	E
Colorado						
13	Compass Exploration, Inc.	Trail Canyon 1-3	3	32	8	E
14	Stanolind Oil and Gas Co.	Worford B 1	10	33	8	E
15	Pan American Petroleum Corp.	J. M. Keyes 1	2	34	8	E
16	Aspen Drilling Co.	Govt. 1	22	35	8	IE
Section E-E' (NW-SE)						
New Mexico						
1	Adobe Oil Co.	Cuccia 1	14	31	13	IE
2	Pan American Petroleum Corp.	State BD 1	32	31	12	IE
3	do	Lilywhite 1	13	30	12	IE
4	Beta Development Co.	Bloomfield Canyon-Federal 1	35	30	11	IE
5	Southern Union Production Co.	Albright 6	22	29	10	IE
6	El Paso Natural Gas Co.	Reid 1	8	28	9	E
7	do	Story 10-C	35	28	9	E
8	do	Florance 10-D	17	27	8	E
9	International Oil and Gas Corp.	Federal Miles D-1-5	5	26	7	IE
10	El Paso Natural Gas Co.	Vaughn 4	29	26	6	E
11	Kay Kimbell	Jicarilla 1-20	20	25	5	IE
12	Continental Oil Co.	Northeast Haynes 8	15	24	5	IE
13	Skelly Oil Co.	Jicarilla D 2	5	23	4	IE
14	Reynolds Mining Corp.	Jicarilla 1	29	23	3	E
15	Shar-Alan Oil Co.	Humble Dakota 1	21	22	2	IE
16	Sun Oil Co.	McElvain Govt. 1	23	21	2	E
Section F-F' (W-E)						
New Mexico						
1	Standard Oil Co. of Texas	Navajo Tribal 9-1	9	27	15	IE
2	Gulf Oil Corp.	Gulf-Raven-Ojo-Navajo 1	4	27	14	IE
3	Benson-Montin-Greer Drilling Corp.	Douthit 1	5	27	13	IE
4	Pan American Petroleum Corp.	Gallegos Canyon 147	4	27	12	IE
5	El Paso Natural Gas Products Co.	Frontier 3-B	4	27	11	IE
6	Sunset International Petroleum Corp.	Sipco Kutz Federal 2-F	4	27	10	IE
7	El Paso Natural Gas Co.	Blanco 27-9 5	2	27	9	IE
8	do	Schwerdtfeger 12-A	6	27	8	E
9	do	San Juan 28-7 85	6	27	7	IE
10	do	San Juan 28-6 40	4	27	6	E
11	do	San Juan 27-5 89	4	27	5	IE
12	do	San Juan 27-4 2	5	27	4	E
13	do	Jicarilla 84-2	21	28	3	IE
14	Sunray DX Oil Co.	Jicarilla Tribal 1-A	27	28	2	IE
15	Foutz and Bursum	Foutz and Bursum Val 1	17	28	1	IE
16	Mobil Oil Co.	Boulder 23-23	23	28	1	IE



MAP SHOWING LINES OF SECTIONS



NOTE
Formation boundaries were determined from electric logs of oil or gas wells located at numbered points. The datum is the Huerfano.

LIST OF WELLS, AND STRATIGRAPHIC CROSS SECTIONS SHOWING THE INTERVAL FROM THE HUERFANITO BENTONITE BED OF THE LEWIS SHALE TO THE BASE OF THE OJO ALAMO SANDSTONE, THE ANIMAS FORMATION, OR THE NACIMIENTO FORMATION, SAN JUAN BASIN, COLORADO AND NEW MEXICO