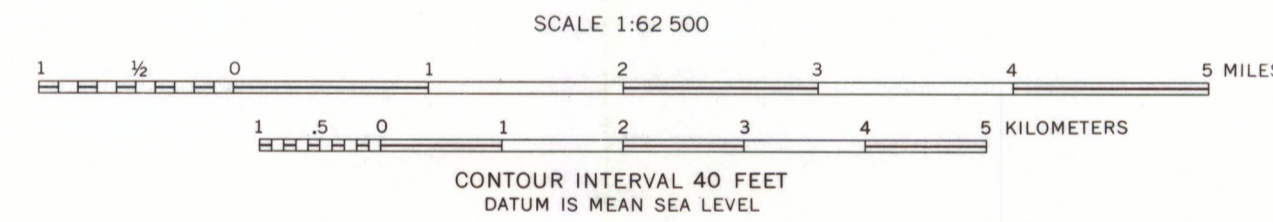
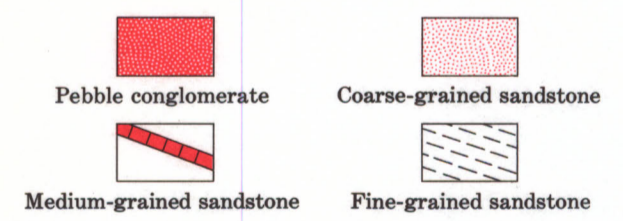


Base from U.S. Geological Survey, 1957

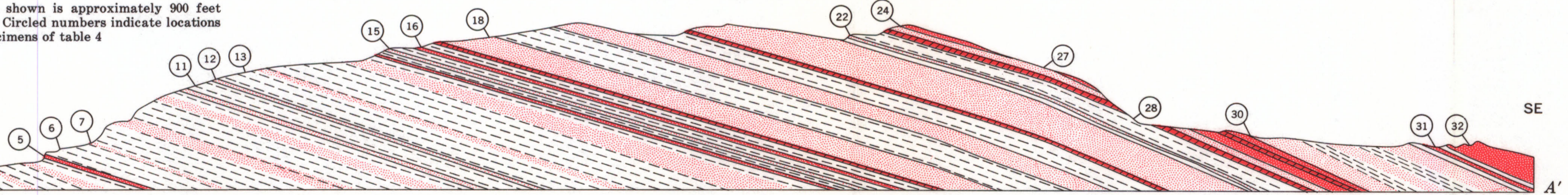
Geology by Roger G. Wolff, 1968, and N. King Huber, 1966-69



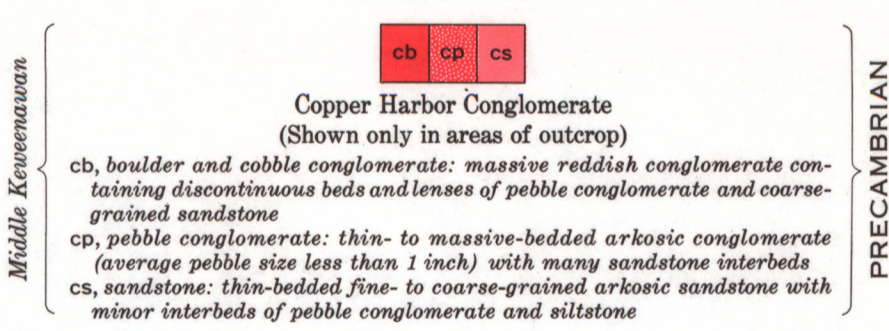
SECTION EXPLANATION



Sequence shown is approximately 900 feet thick. Circled numbers indicate locations for specimens of table 4



MAP EXPLANATION

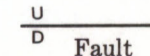


Middle Cambrian

PRECAMBRIAN

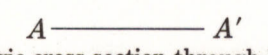
Areas of outcrop

Approximate location of base of Copper Harbor Conglomerate

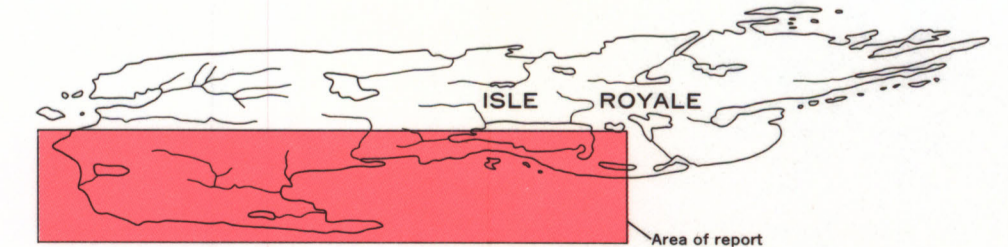


Shown only where Copper Harbor Conglomerate is demonstrably and appreciably offset. U and D indicate relative upthrown and downthrown sides

Strike and dip of beds



Location of geologic cross section through Houghton Ridge



MAP AND STRUCTURE SECTION OF THE COPPER HARBOR CONGLOMERATE ON ISLE ROYALE, MICHIGAN