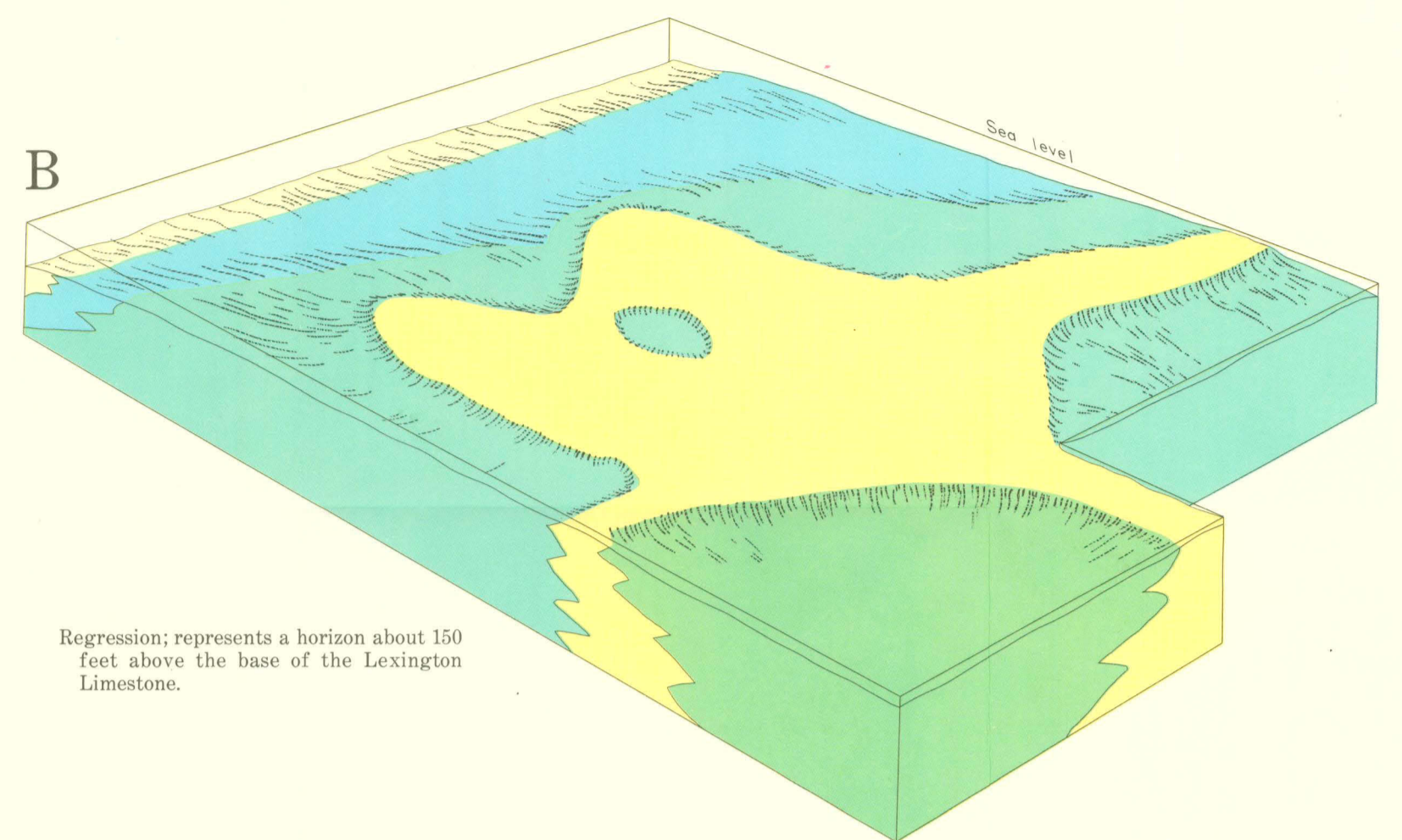
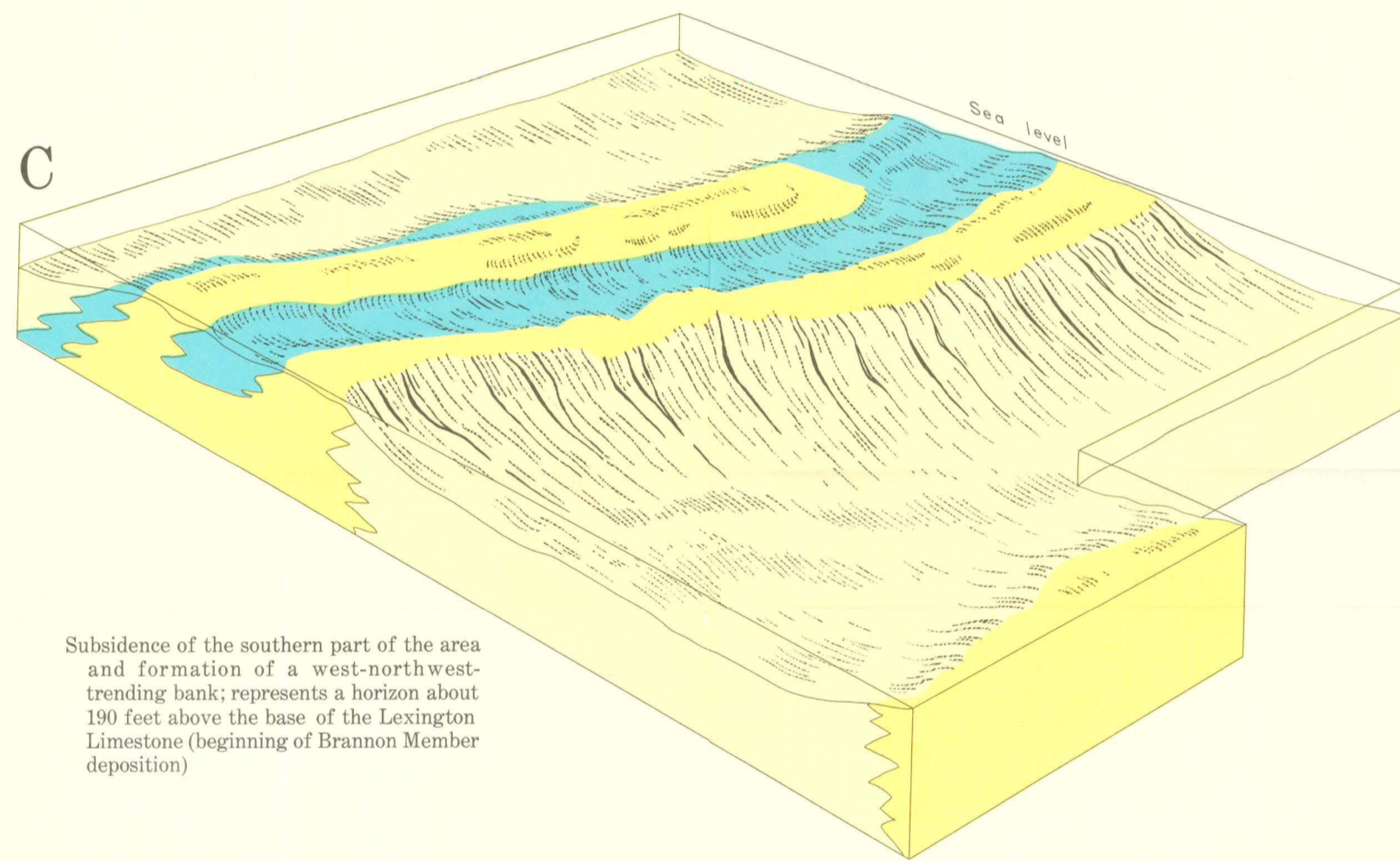


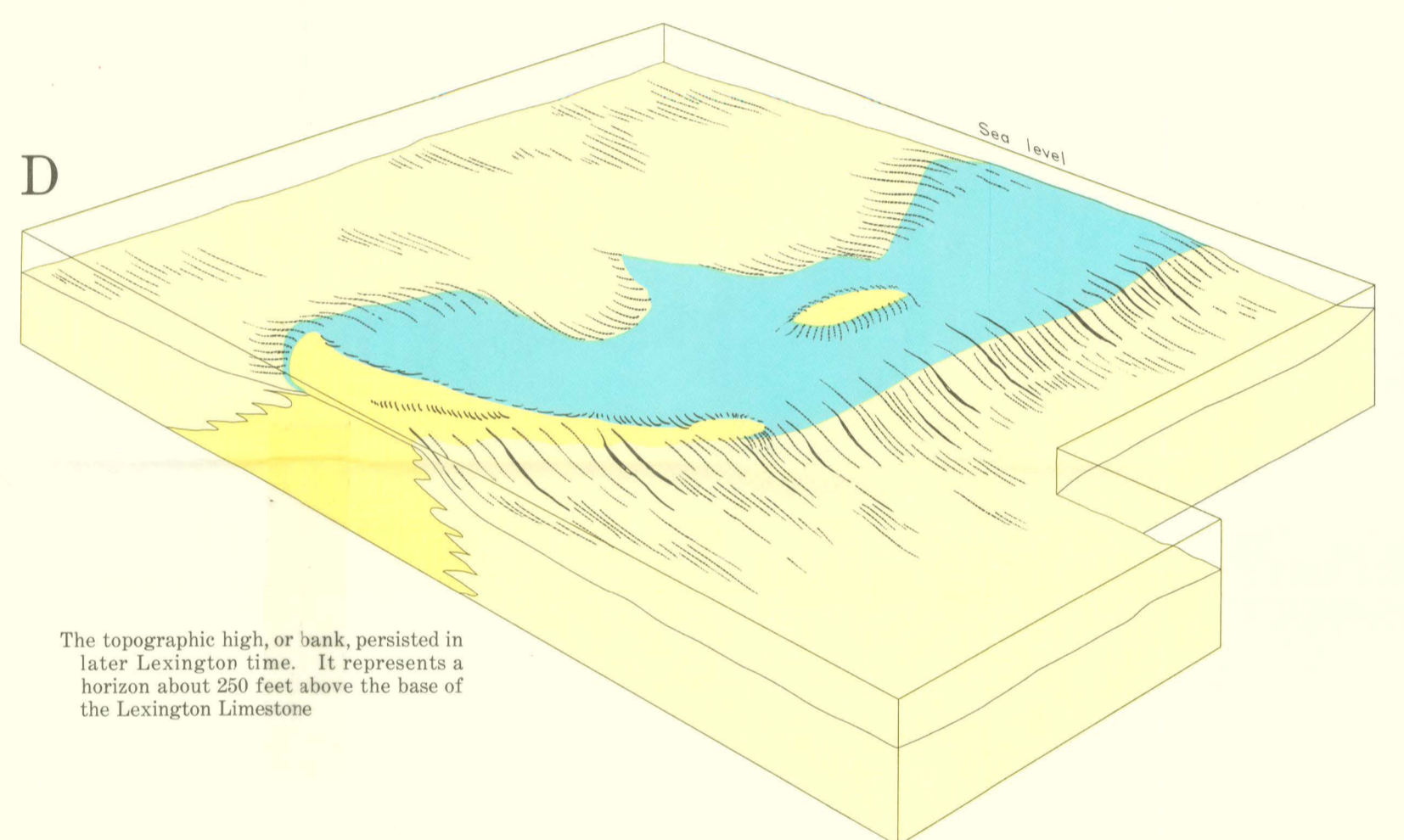
Maximum transgression; represents a horizon in the lower 100 feet of the Lexington Limestone



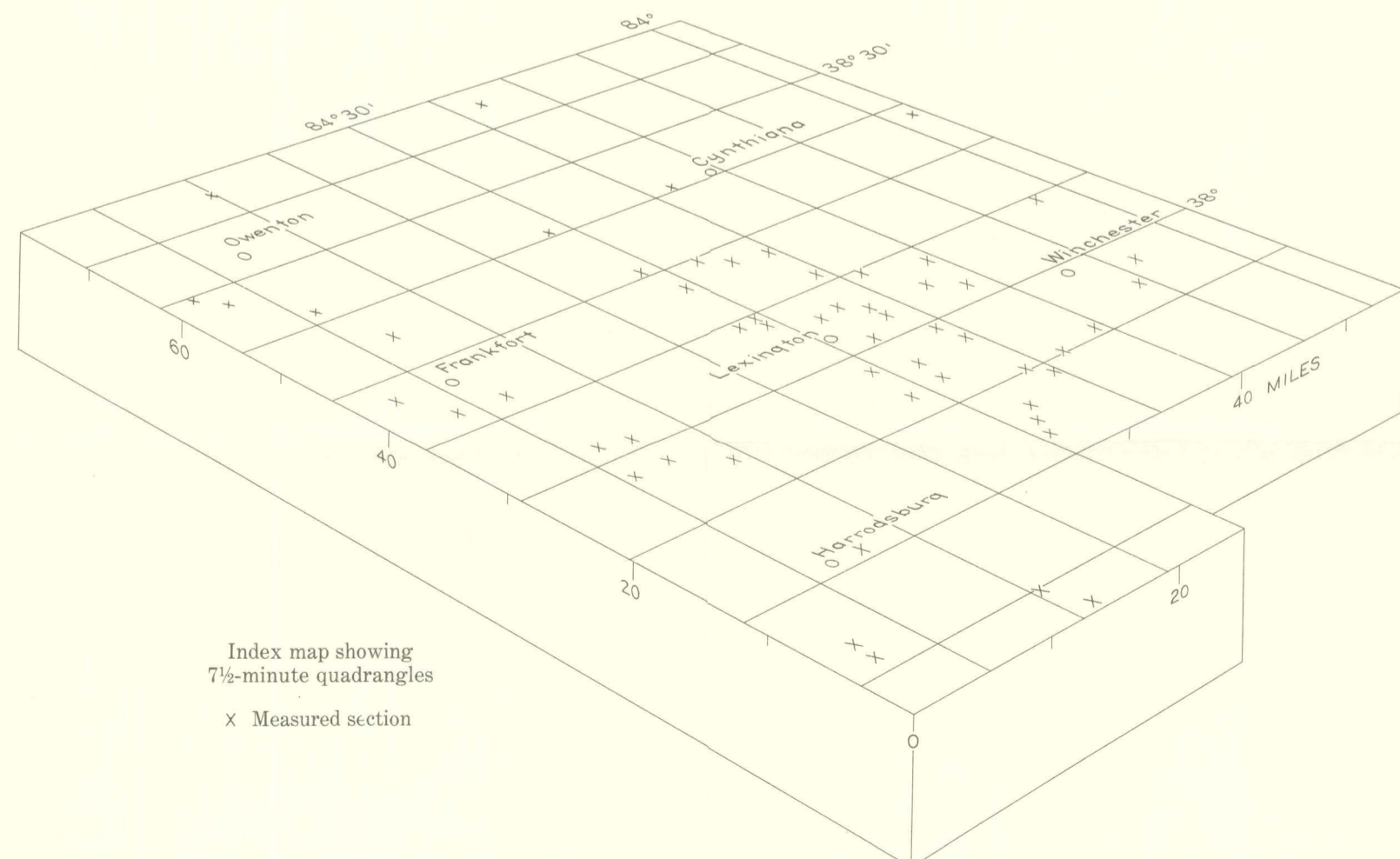
Regression; represents a horizon about 150 feet above the base of the Lexington Limestone.



Subsidence of the southern part of the area and formation of a west-northwest-trending bank; represents a horizon about 190 feet above the base of the Lexington Limestone (beginning of Brannon Member deposition)

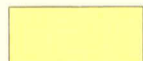

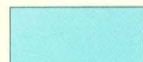
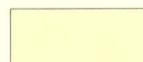



The topographic high, or bank, persisted in later Lexington time. It represents a horizon about 250 feet above the base of the Lexington Limestone



Index map showing
7½-minute quadrangles
x Measured section

EXPLANATION

-  Calcarenite
-  Fossiliferous limestone
-  Nodular fossiliferous limestone and shale
-  Interbedded calcisiltite and shale
-  Calcilutite

BLOCK DIAGRAMS SHOWING FACIES AND PALEOGEOGRAPHY OF THE LEXINGTON LIMESTONE