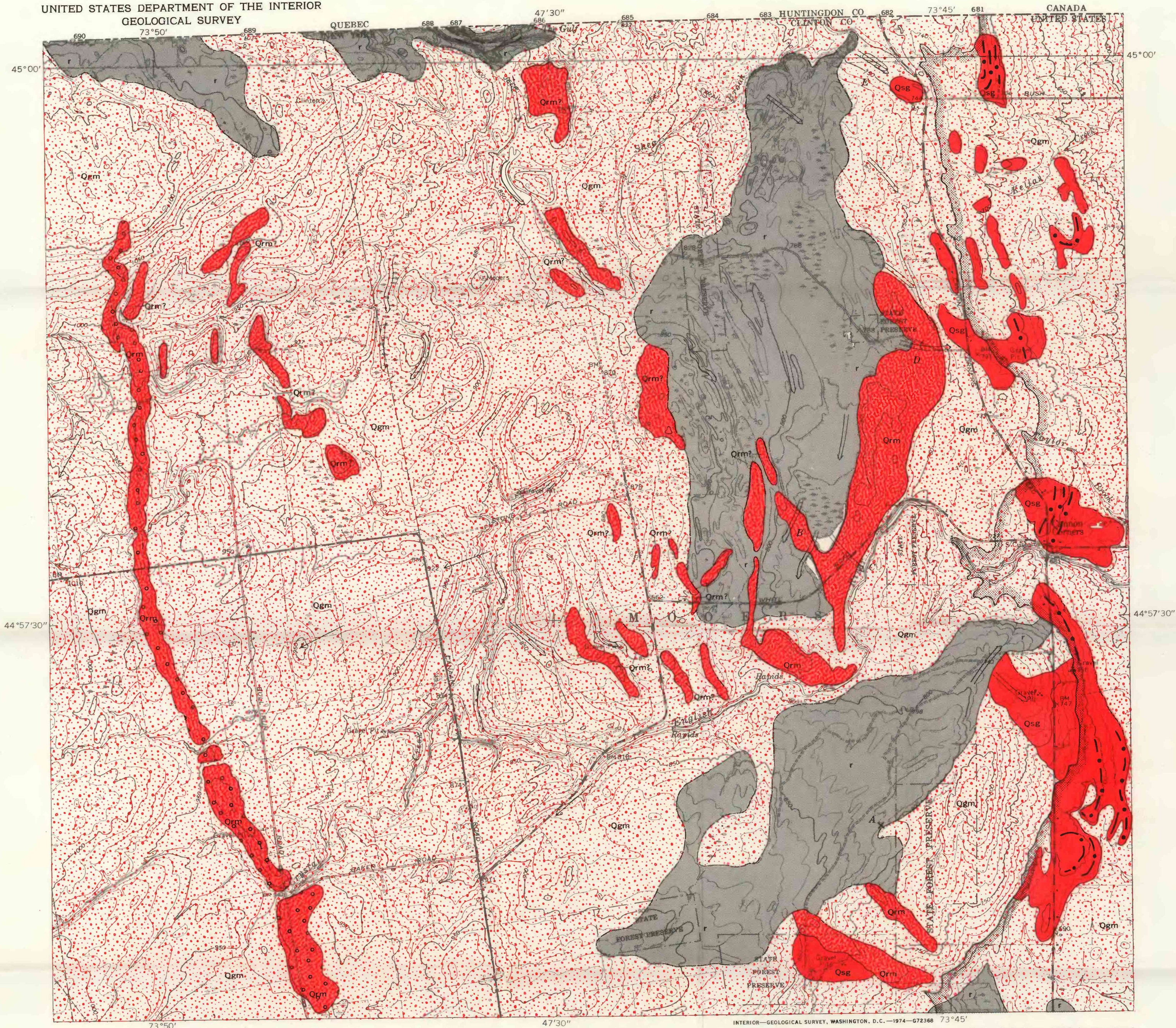


UNITED STATES DEPARTMENT OF THE INTERIOR  
GEOLOGICAL SURVEY



Base from U.S. Geological Survey  
Ellenburg Depot, 1964, and Altona,  
1966

SCALE 1:24 000  
1 1/2 0 1 MILE  
1 5 0 1 KILOMETER  
CONTOUR INTERVAL 10 FEET  
DATUM IS MEAN SEA LEVEL

Geology compiled by C. S. Denny, 1969, from scattered  
field observations, aerial photographs, and from Denny  
(1970), MacClintock and Stewart (1965, pl. 1B), and  
Postel (1952, pl. 1)

EXPLANATION

- |  |  |            |
|--|--|------------|
|  | Qsg  | QUATERNARY |
|  | Sand and gravel  |            |
|  | Qrm  | QUATERNARY |
|  | Recessional moraine<br>Narrow ridges and knolls of till    |            |
|  | Qgm  | QUATERNARY |
|  | Ground moraine   |            |
|  | r  | CAMBRIAN   |
|  | Large areas of abundant outcrop<br>of Potsdam Sandstone    |            |
|  |  |            |
|  | Moraine near Ellenburg Depot                               |            |
|  |  |            |
|  | Contact, approximately located<br>Dashed where gradational |            |
|  |  |            |
|  | Highest stand of the Fort Ann<br>stage of Lake Vermont     |            |
|  |  |            |
|  | Glacial striation<br>Point of observation at tip of arrow  |            |
|  |  |            |
|  | Abandoned stream channel                                   |            |
|  |  |            |
|  | Beach ridge or spit  |            |
|  |  |            |
|  | Locality referred to in text                               |            |

SURFICIAL GEOLOGIC MAP OF THE AREA AT THE HEADWATERS OF ENGLISH RIVER  
WEST OF CANNON CORNERS, NORTHEAST ADIRONDACK REGION, NEW YORK