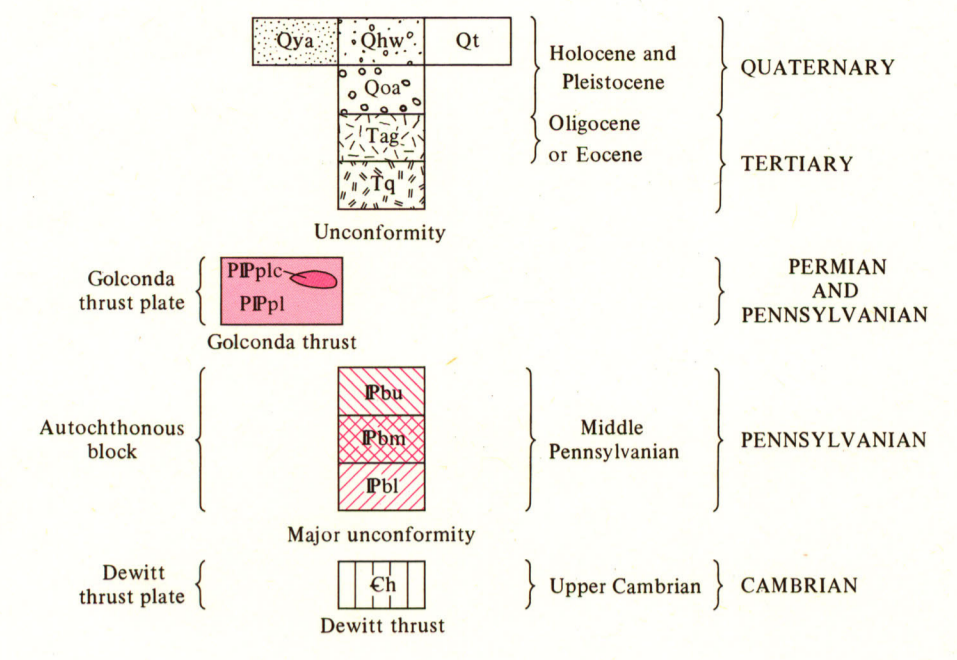


CORRELATION OF MAP UNITS

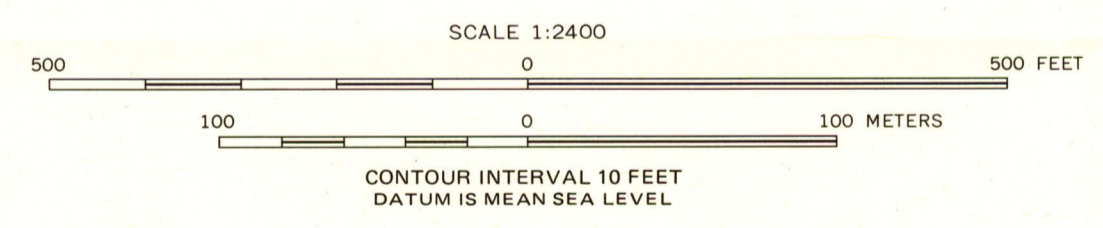
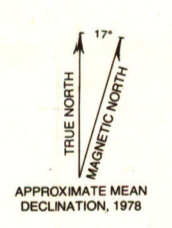


DESCRIPTION OF MAP UNITS

- Qya YOUNGER ALLUVIUM
- Qhw HILLWASH DEPOSITS
- Qt TALUS
- Qoa OLDER ALLUVIUM
- Tag ALTERED GRANODIORITE OF COPPER CANYON
- Tq QUARTZ MONZONITE
- PPpl PUMPERNICKEL FORMATION (Permian and Pennsylvanian) - Lower unit of Theodore and Blake (1975). Locally includes lensoid chert interbeds (PPplc)
- Pbu BATTLE FORMATION (Pennsylvanian)
- Pbu Upper member
- Pbm Middle member
- Pbl Lower member
- Ch HARMONY FORMATION (Cambrian)

- Contact
- Normal or steep reverse fault, showing dip - Dashed where approximately located; short dashed where inferred; dotted where concealed
- Anticline
- Syncline
- Minor anticline - Showing plunge of axis
- Minor syncline - Showing plunge of axis
- Strike and dip of beds
- Strike and dip of schistosity
- Surface projection of ore in west ore body
- Silicified fault breccia
- Unconsolidated fault gouge and breccia
- Iron oxides
- DDH - 19 Drill hole
- Mine dump
- Soil sample traverse (see figs. 26 - 28)
- Shaft
- Prospect
- Adit

Base by Aerial Mapping Co. for Duval Corporation, 1962



Geology modified from Theodore and Blake (1975)

