



CORRELATION OF MAP UNITS

Qal	Qtm	Qbs	Holocene and Pleistocene	QUATERNARY
Qb				
Qua				
Unconformity				
Tvt			Paleocene	TERTIARY
Unconformity				
Tht			Upper Cretaceous	CRETACEOUS
Unconformity				
Kml				
Kmt			Upper and Lower Cretaceous	
Ket				
Kmv				
Unconformity				
Km				
Unconformity				
Kp				

DESCRIPTION OF MAP UNITS

- Qal ALLUVIUM
- Qtm MARSH DEPOSITS
- Qbs BEACH SAND
- Qb BOG
- Qua UPLAND ALLUVIUM
- Unconformity
- Tvt VINCINTOWN FORMATION
- Unconformity
- Tht HORNERSTOWN SAND
- Unconformity
- Kml MOUNT LAUREL SAND
- Kmt MARSHALLTOWN FORMATION
- Ket ENGLISHTOWN FORMATION
- Kmv MERCHANTVILLE FORMATION
- Unconformity
- Km MAGOTHY FORMATION
- Unconformity
- Kp POTOMAC GROUP

— Contact — Solid contacts generally accurate to within 50 feet; dotted where concealed. Point of triangle indicates exposed contact

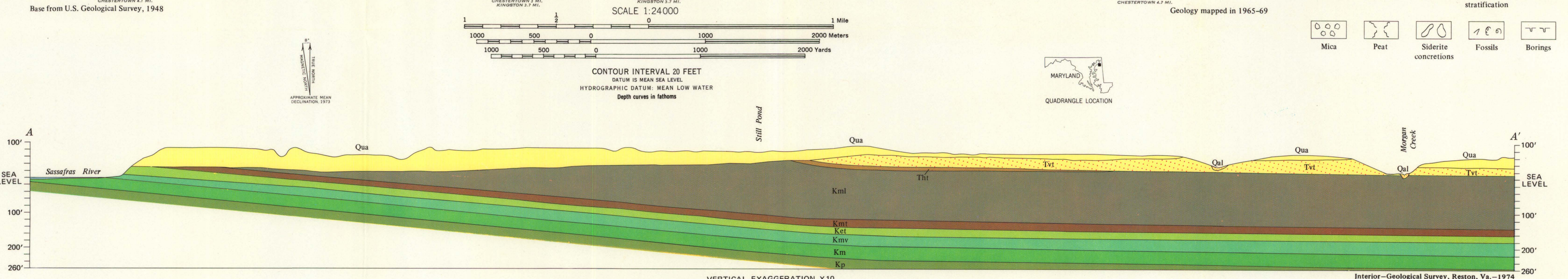
⊗ Sand or gravel pit

○/24 Auger hole — Upper number is thickness of Quaternary material; lower number is depth to the base of the first underlying pre-Quaternary formation, or the depth to the base of an exposed pre-Quaternary formation

SERIES	UNIT	SCHEMATIC COLUMNAR SECTION	THICKNESS, IN FEET
PLEISTOCENE AND HOLOCENE	Alluvium	[Pattern]	3-15
	Marsh deposits	[Pattern]	UNCONFORMITY
	Beach sand	[Pattern]	5-20
	Bog	[Pattern]	5-30
	Upland alluvium	[Pattern]	UNCONFORMITY
PALEOCENE	Vincintown Formation	[Pattern]	25-30
	Hornerstown Sand	[Pattern]	0-12
UPPER CRETACEOUS	Mount Laurel Sand	[Pattern]	UNCONFORMITY
	Marshalltown Formation	[Pattern]	60-130
	Englishtown Formation	[Pattern]	15-18
	Merchantville Formation	[Pattern]	15-18
LOWER AND MIDDLE CRETACEOUS	Magothy Formation	[Pattern]	20-40
	Unconformity	[Pattern]	UNCONFORMITY
	Potomac Group	[Pattern]	30-35
			UNCONFORMITY
			25

EXPLANATION

[Symbol]	Gravel	[Symbol]	Sand	[Symbol]	Clay-silt	[Symbol]	Cross-stratification	[Symbol]	Glauconite
[Symbol]	Mica	[Symbol]	Peat	[Symbol]	Siderite concretions	[Symbol]	Fossils	[Symbol]	Borings



GEOLOGIC MAP AND SECTION OF THE BETTERTON QUADRANGLE, KENT COUNTY, MARYLAND

Interior—Geological Survey, Reston, Va.—1974