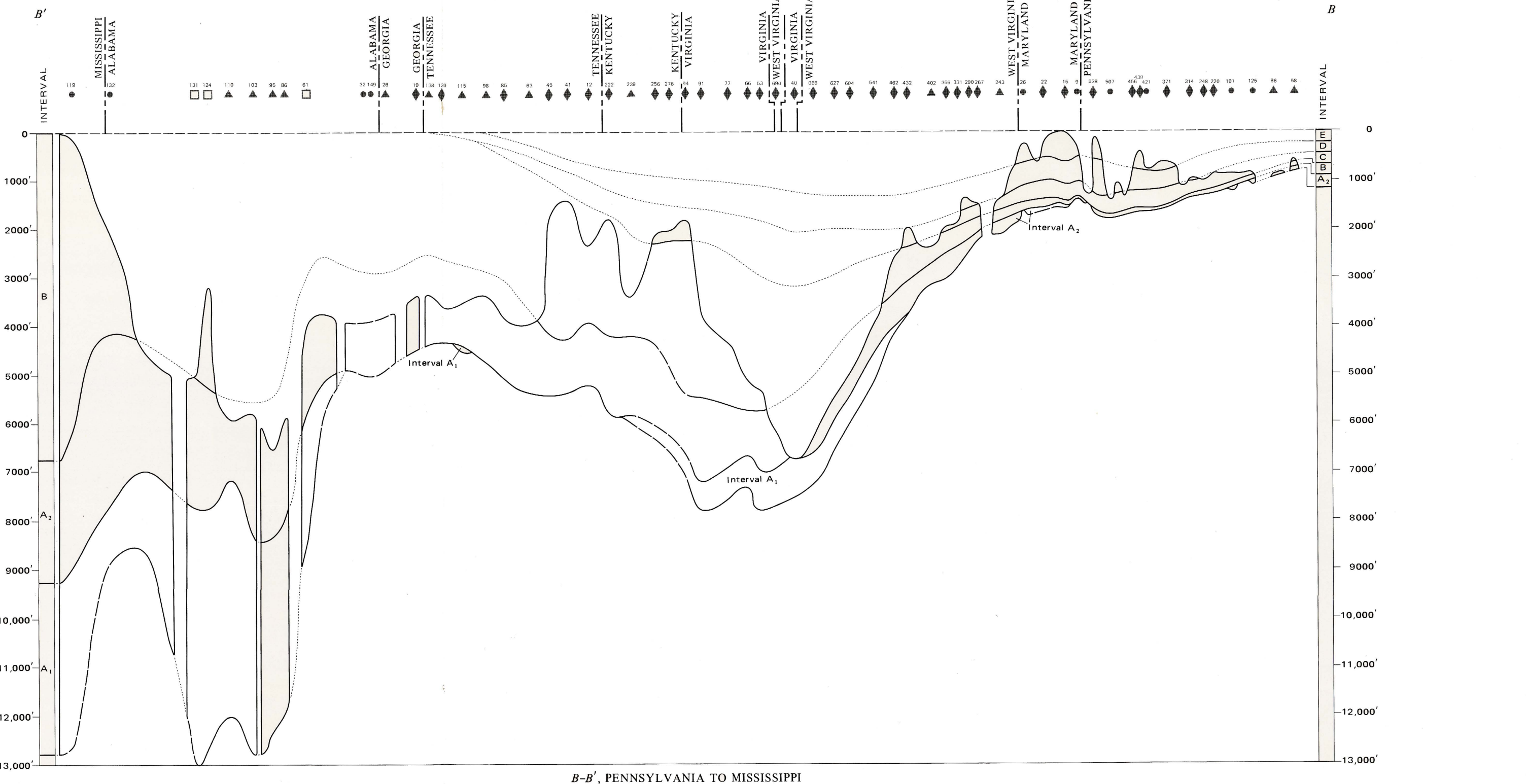
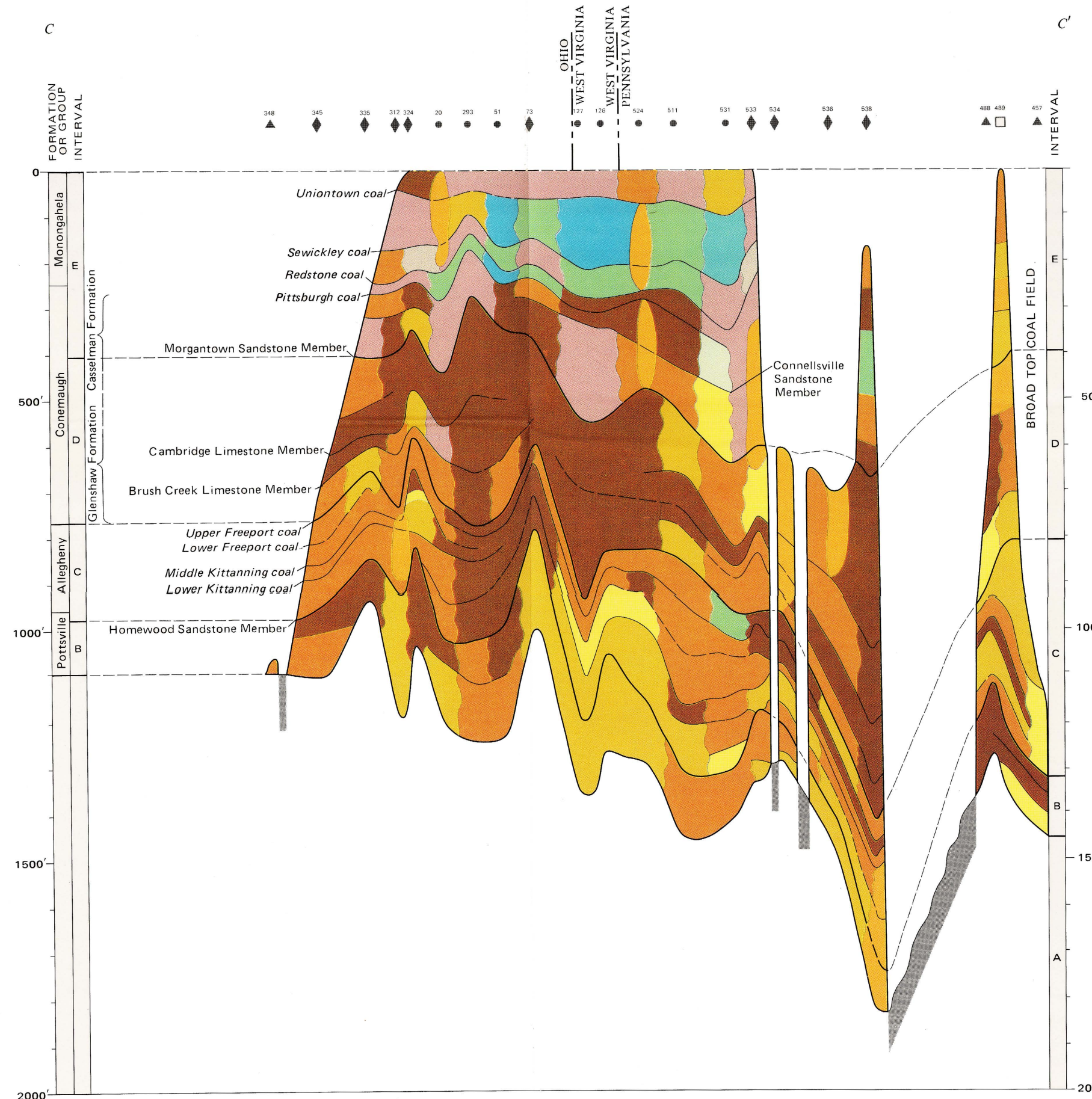


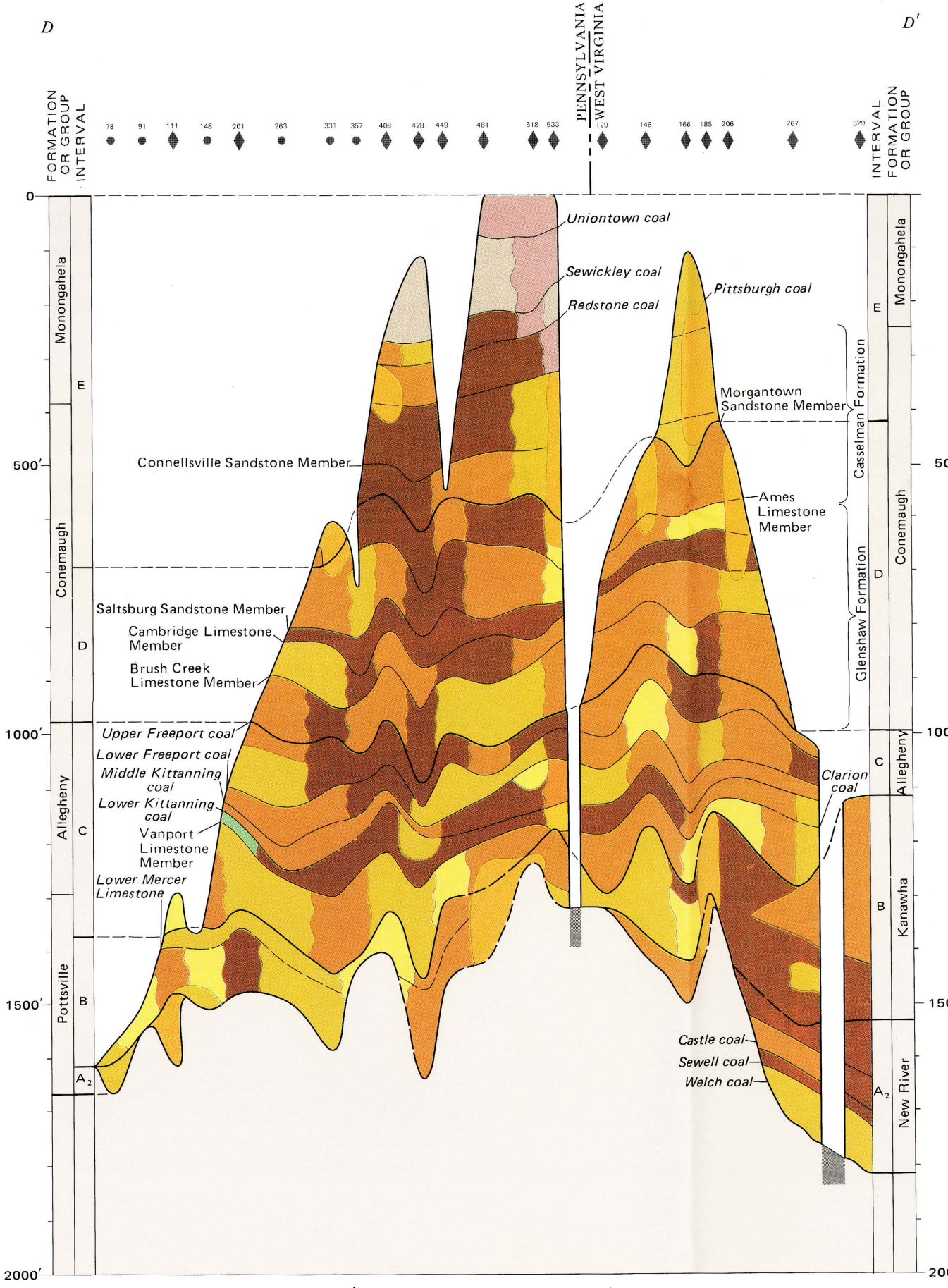
A-A', PENNSYLVANIA TO MISSISSIPPI



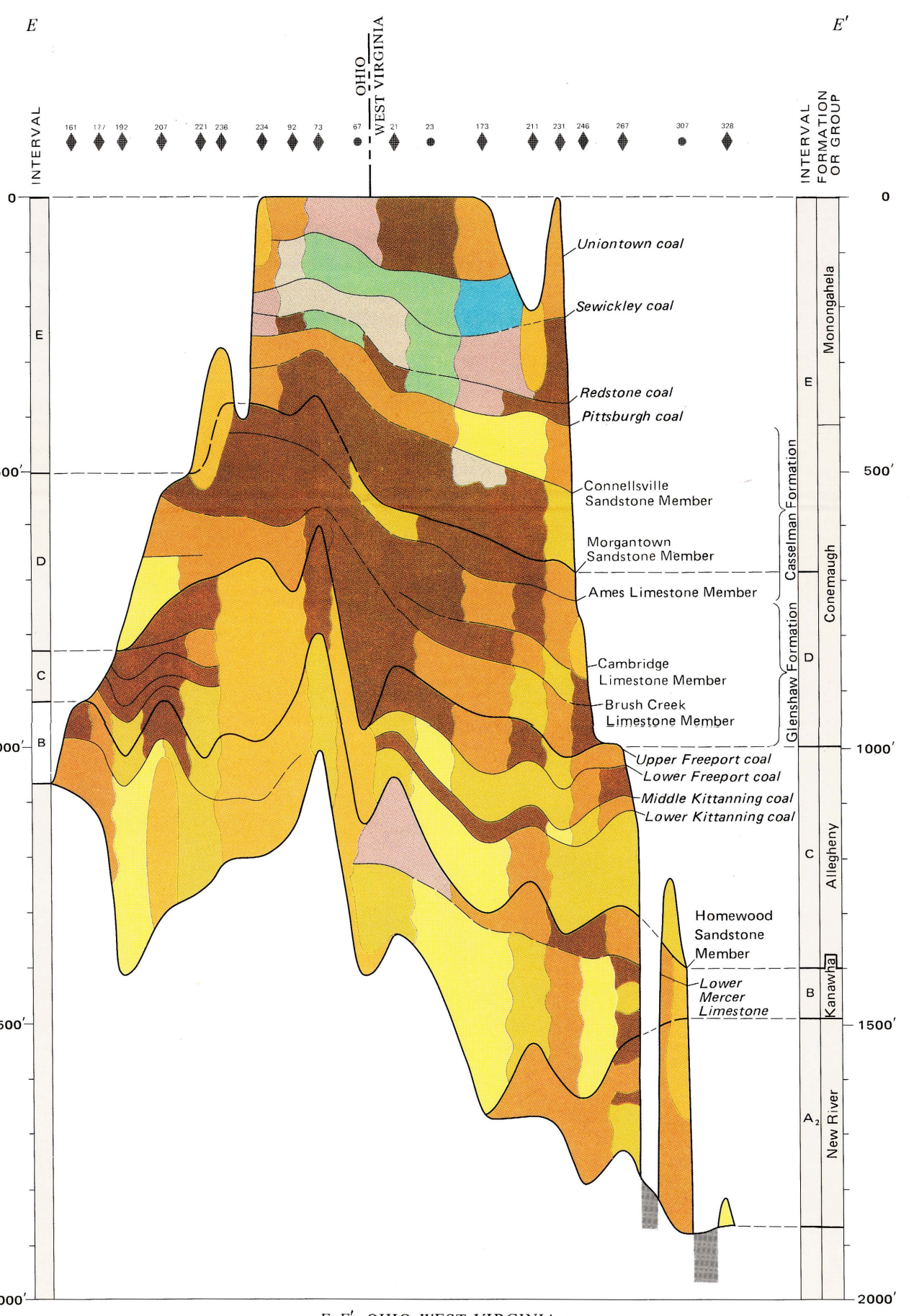
B-B', PENNSYLVANIA TO MISSISSIPPI
(A-A' and B-B')
SCALE 1:5 000 000
VERTICAL SCALE EXAGGERATED



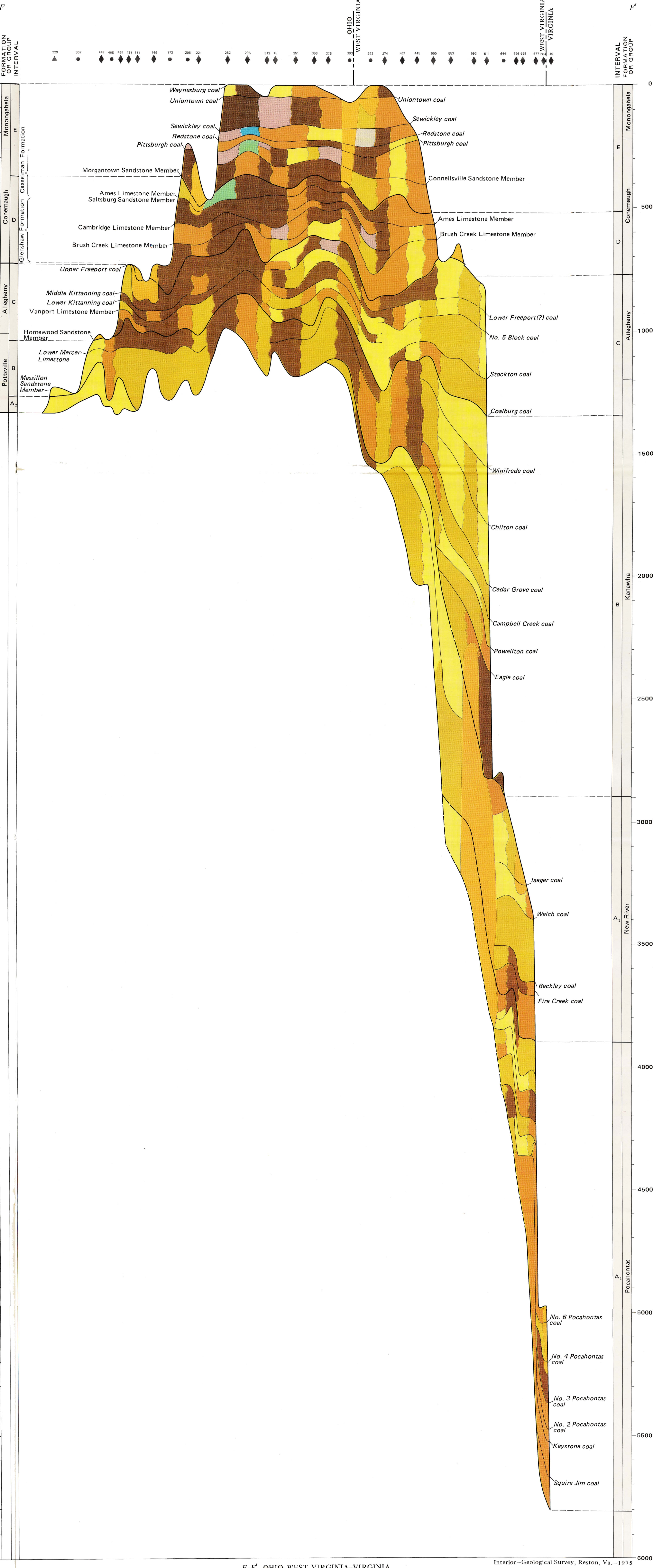
C-C', OHIO-WEST VIRGINIA-PENNSYLVANIA



D-D', PENNSYLVANIA-WEST VIRGINIA



E-E', OHIO-WEST VIRGINIA



F-F', OHIO-WEST VIRGINIA-VIRGINIA

EXPLANATION

Outcrop section
Numbers correspond to those in "Index to Localities and Sources" in text

Well section
Numbers correspond to those in "Index to Localities and Sources" in text

Composite section constructed from outcrops, wells or both, less than five miles apart
Numbers correspond to those in "Index to Localities and Sources" in text

Generalized section constructed from scattered data in the surrounding area
Numbers correspond to those in "Index to Localities and Sources" in text

Fault of Pennsylvanian age
Arrows show direction of relative movement

Area in vicinity of Pennsylvanian rocks where older rocks are exposed

Area in vicinity of Pennsylvanian rocks in which the Pennsylvanian, if ever present, has been masked or destroyed by igneous intrusion, metamorphism or complex structural deformation

Area in vicinity of Pennsylvanian rocks in which Pennsylvanian rocks have not been penetrated by drill

Area where lithofacies is undetermined

Chemical components predominant

ls	ls	ls	ls	ls
a	1	a	1	a
ss	1	ss	1	ss
sh	1	sh	1	sh

Percentage of chemical components

ls	ls	ls	ls	ls
a	1	a	1	a
ss	1	ss	1	ss
sh	1	sh	1	sh

Detrital components predominant

ls	ls	ls	ls	ls
a	1	a	1	a
ss	1	ss	1	ss
sh	1	sh	1	sh

a, Anhydrite and gypsum
ls, Limestone and dolomite
ss, Sandstone
sh, Mudstone (includes claystone and siltstone)

Lithofacies symbols for sedimentary rocks

NOTES

This is a standardized explanation for all Pennsylvanian cross sections; some lithofacies may not appear on this plate. Lines of cross sections are shown on plates 3 through 9. Cross section datums represent actual or estimated surfaces of deposition at end of Pennsylvanian time. All stratigraphic names except those that are italicized are in current usage by the U.S. Geological Survey. Names which have been incorrectly applied to a stratigraphic unit are within quotation marks.

(C-C' through F-F')
SCALE 1:2 500 000
VERTICAL SCALE EXAGGERATED