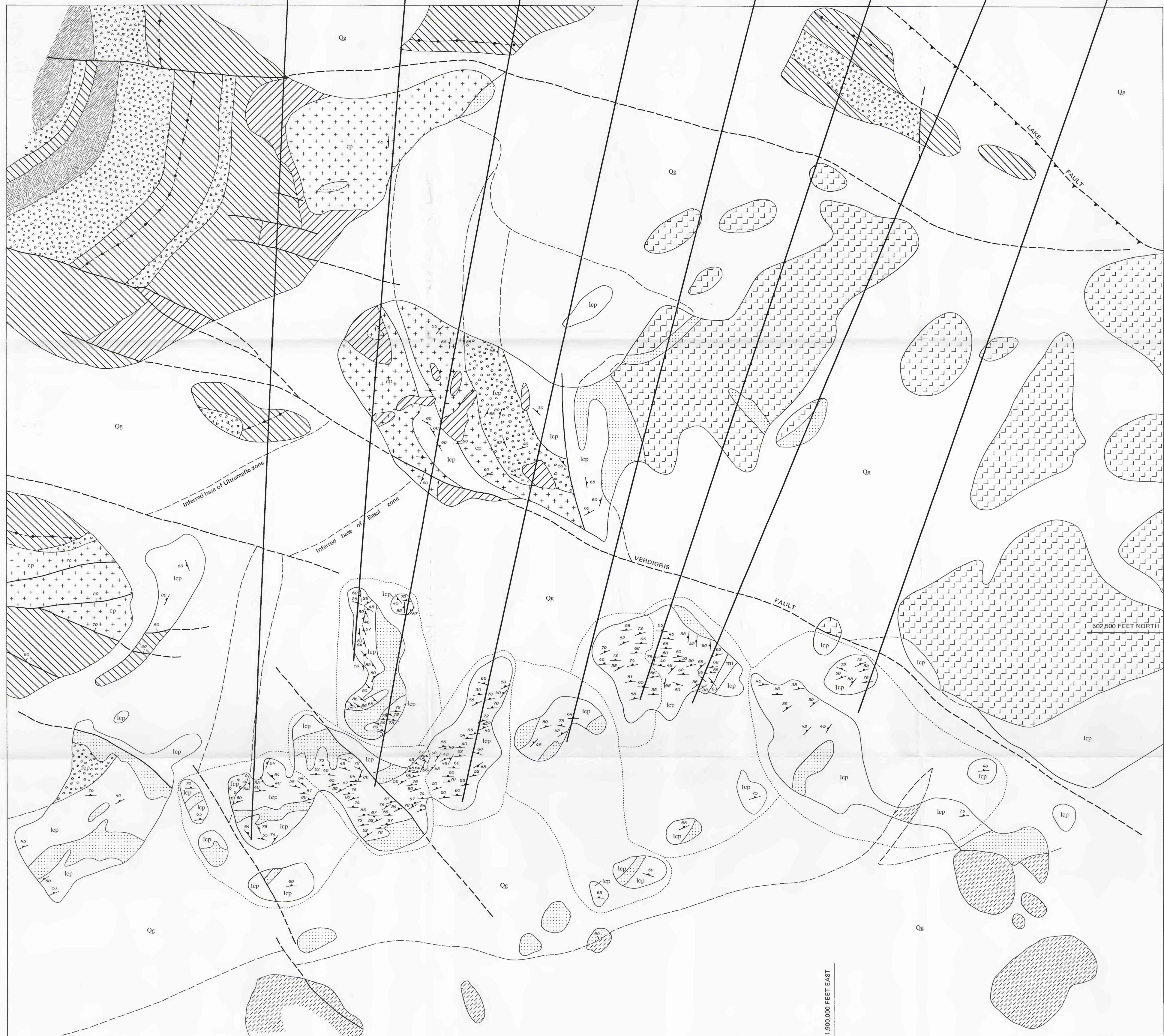
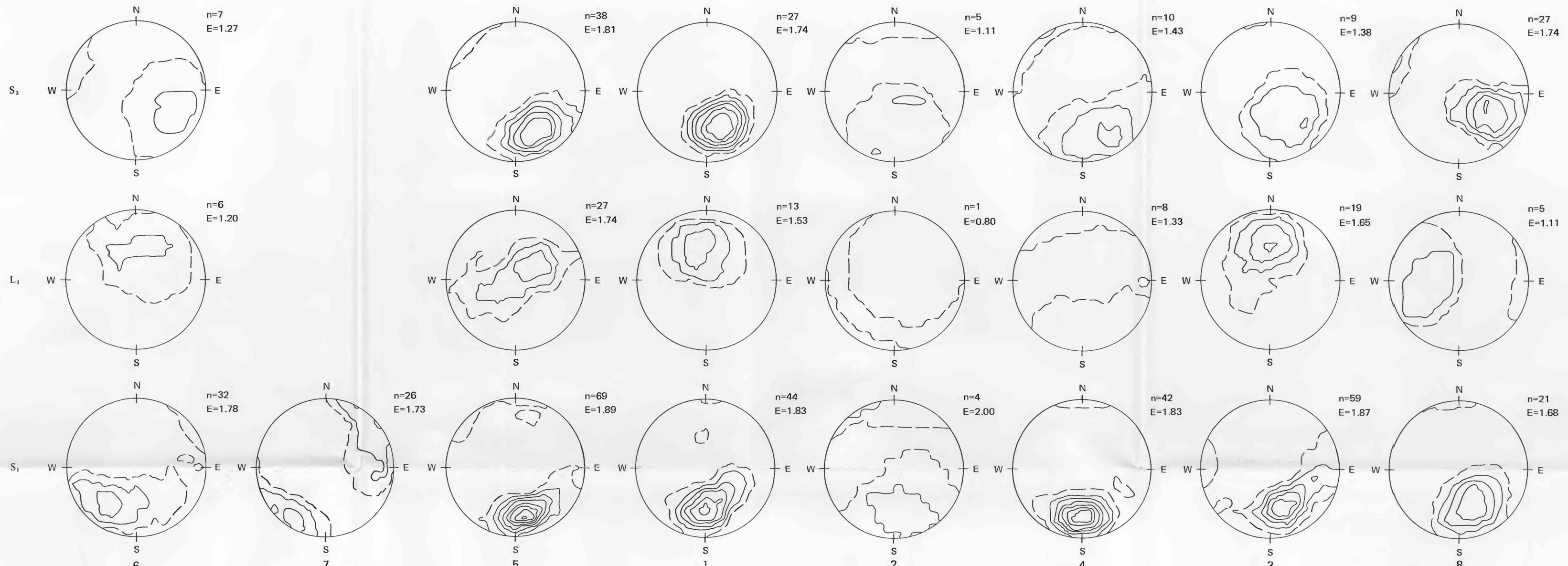


FABRIC DIAGRAMS SHOWING LAYERING (S<sub>1</sub>), AXIAL PLANE CLEAVAGE (S<sub>2</sub>), AND FOLD AXES (L<sub>1</sub>) OF OBSERVATION AREAS 1-8. Contoured at 1E intervals where E is the expected number of points within the counting area for a random pattern using a method developed by Kamb (1959) and computerized by C. E. Corbato (written commun., 1970). Dashed contour is the 1E contour; solid contours are contours greater than 1E. n, number of points.



**EXPLANATION**

- Qg  
Glacial deposits
- mi  
Mafic intrusive rocks
- Aplite
- Medium-grained quartz monzonite
- Coarse-grained quartz monzonite
- Bronzite cumulate
- Olivine-bronzite cumulate
- Olivine cumulate
- Orthopyroxene cumulate and norite
- Metasedimentary rocks  
cp, massive structureless hornfels  
lcp, layered hornfels  
fcp, fragmental hornfels, diamictite
- Contact, approximately located  
Dashed where inferred and projected
- Fault, approximately located, showing dip  
Dashed where inferred and projected
- Inclined Vertical  
Strike and dip of layering
- Chromite cumulate
- Boundary of observation area

QUATERNARY

PRECAMBRIAN

Stillwater Complex

Basal zone

Ultramafic zone

GEOLOGIC MAP AND FABRIC DIAGRAMS OF PART OF THE MOUNTAIN VIEW AREA

Interior - Geological Survey, Reston, Va. - 1977-G-76286