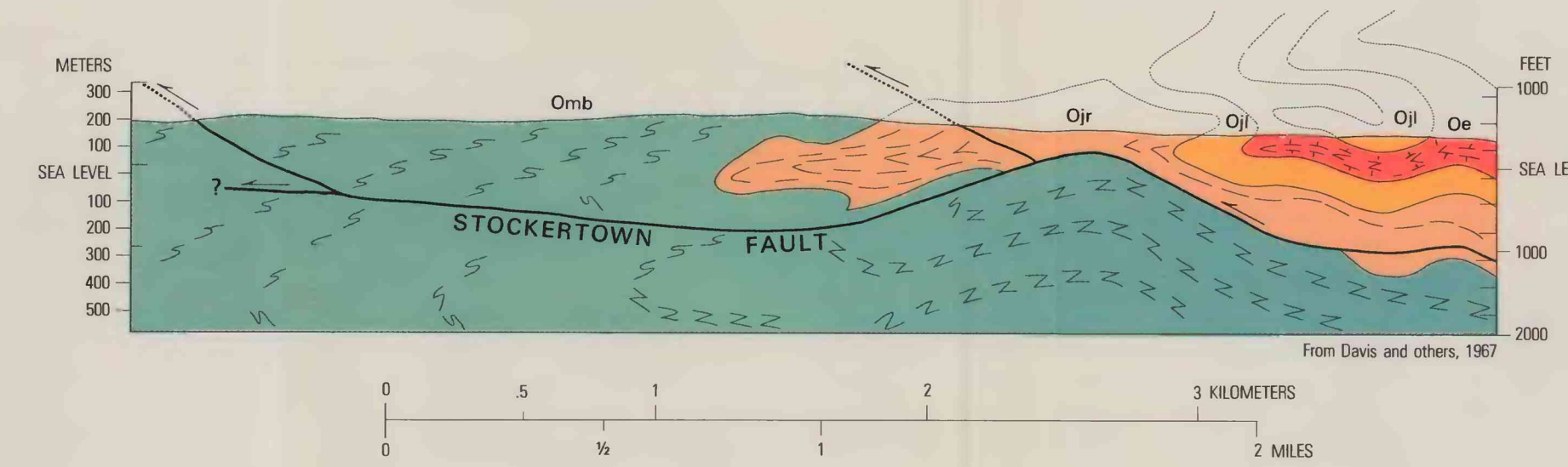


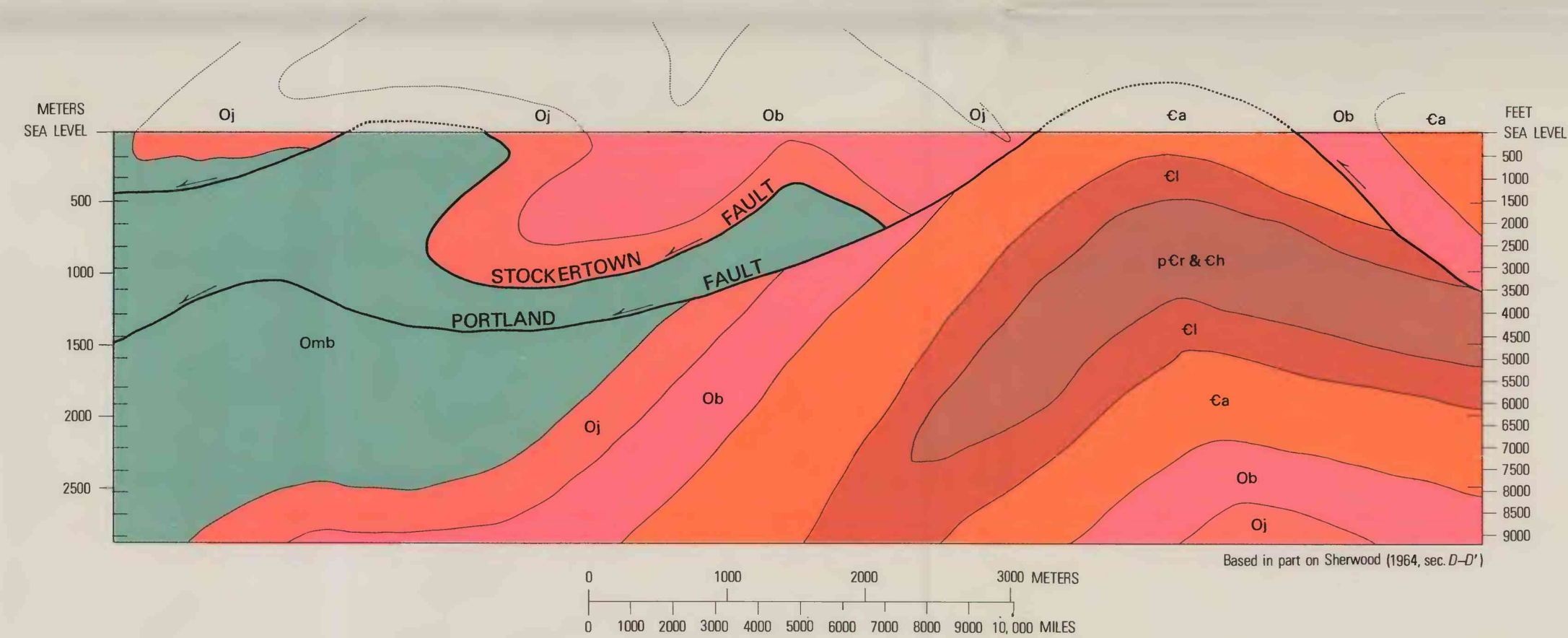
Note: 1. Approximate line of part of section of plate 3B

A. GEOLOGIC MAP OF THE CATASAUQUA AREA, SHOWING THE WHITEHALL WINDOW



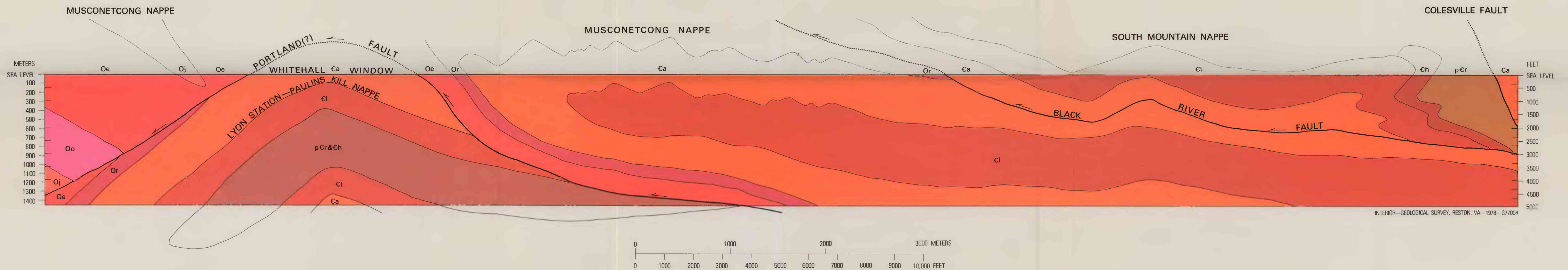
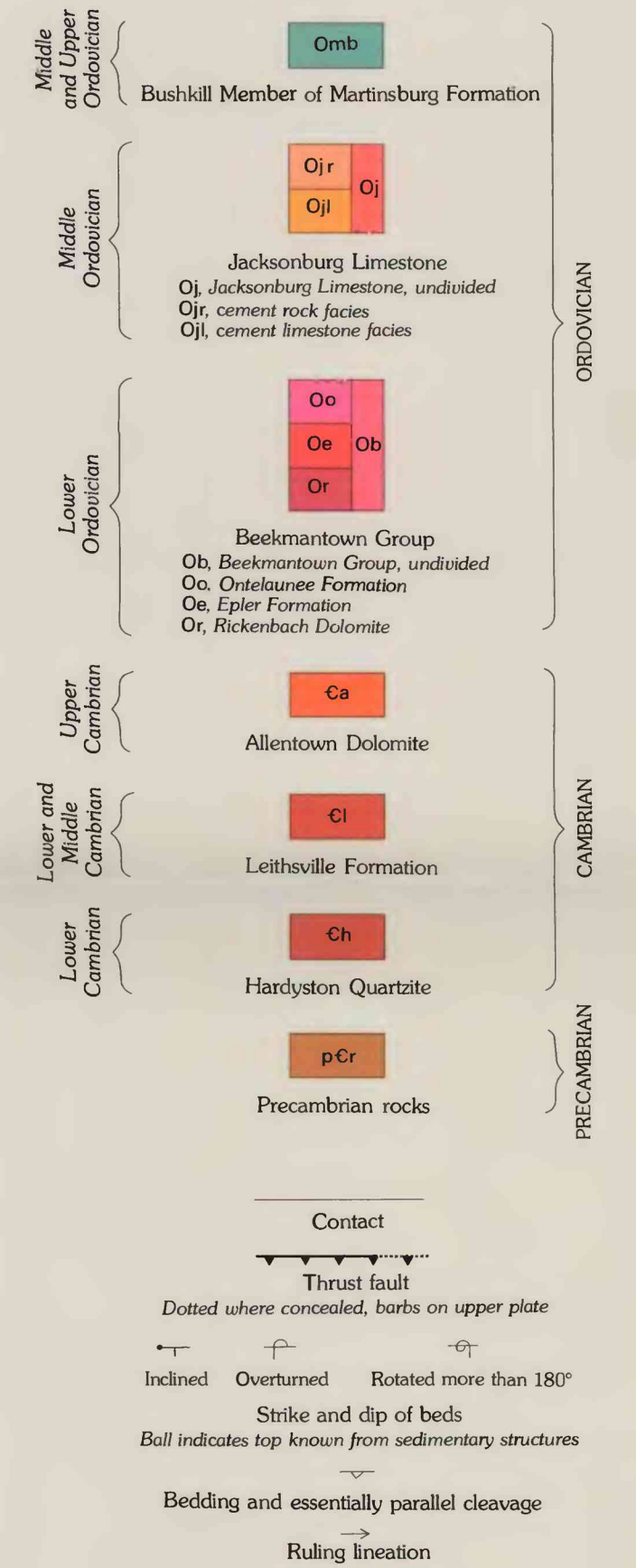
Note: The approximate location of the section is shown on plate 1B

C. GEOLOGIC SECTION THROUGH THE SOUTHWESTERN CORNER OF THE BANGOR QUADRANGLE, PA.-N. J.



D. DIAGRAMMATIC GEOLOGIC SECTION, SHOWING RELATION OF THE STOCKERTOWN FAULT TO THE PORTLAND FAULT

EXPLANATION



Note: Line of section is just east of west borders of the Allentown East and Catsauqua quadrangles, and is approximately located on plate 1B. Geologic relations beneath the Portland (?) fault are diagrammatic

B. SIMPLIFIED GEOLOGIC SECTION ACROSS THE LEHIGH VALLEY FROM SOUTH MOUNTAIN TO HOKENDAUQUA, PA.

GEOLOGIC MAP AND SECTIONS OF AREAS IN THE LEHIGH VALLEY, PENNSYLVANIA