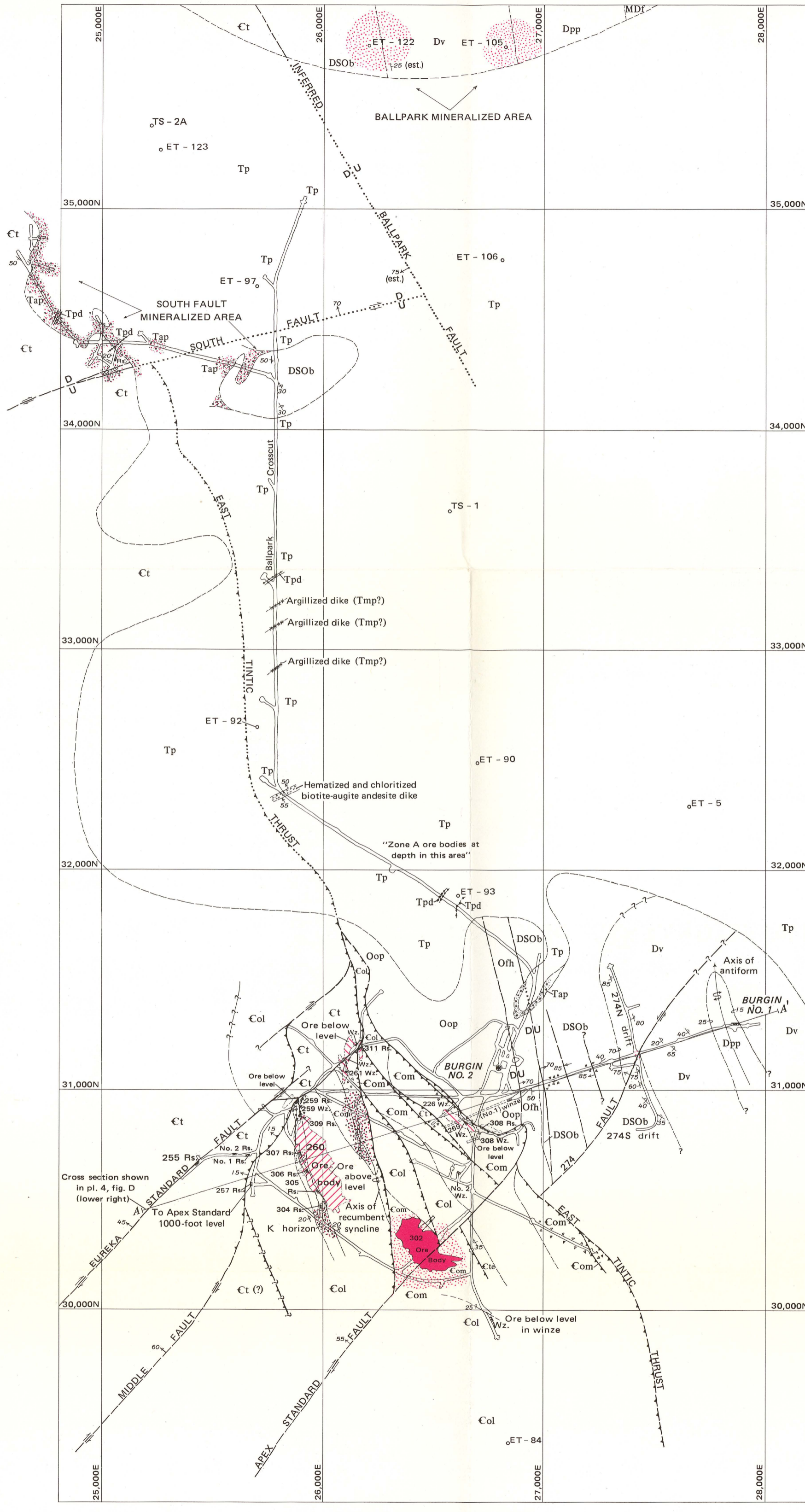
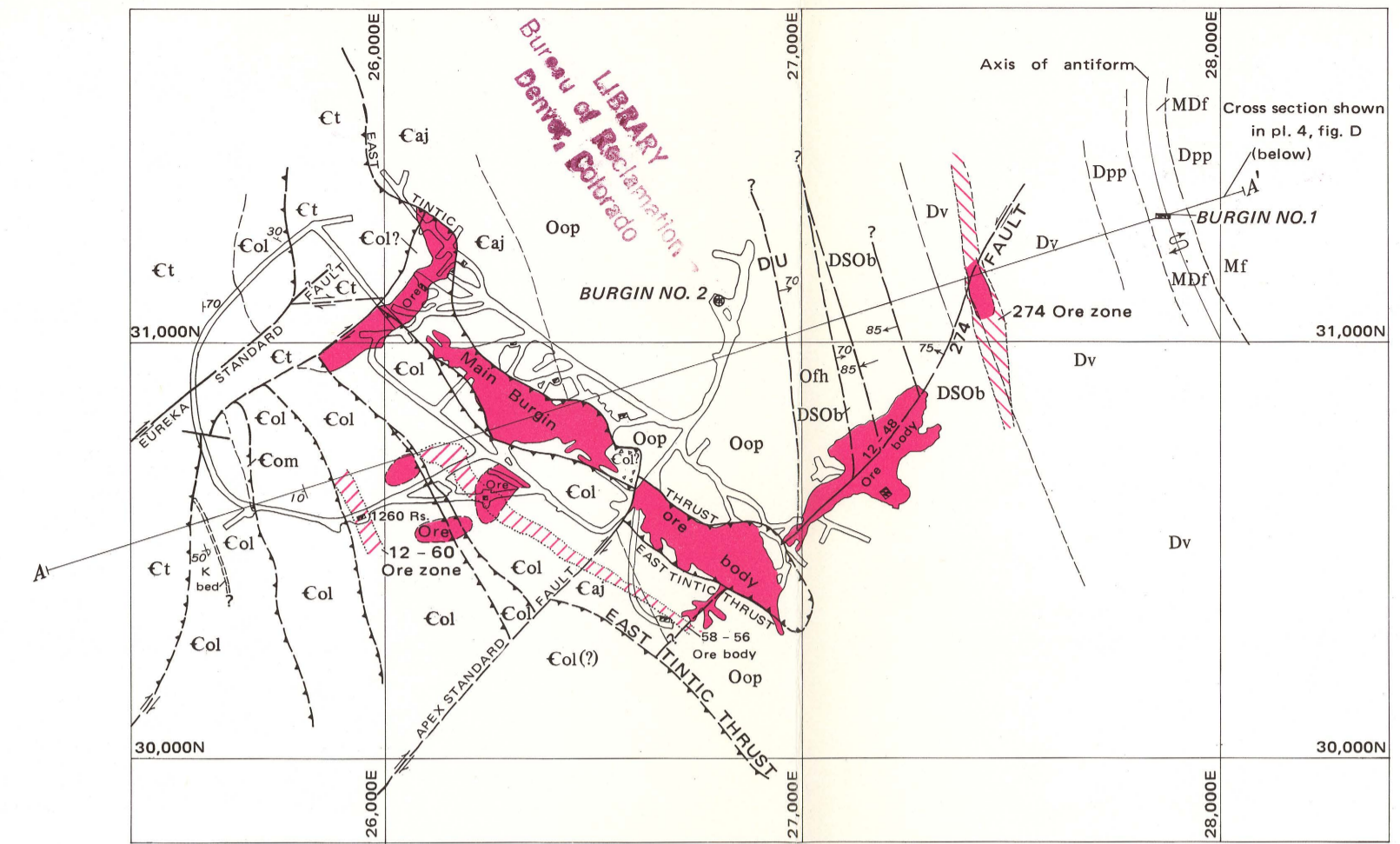


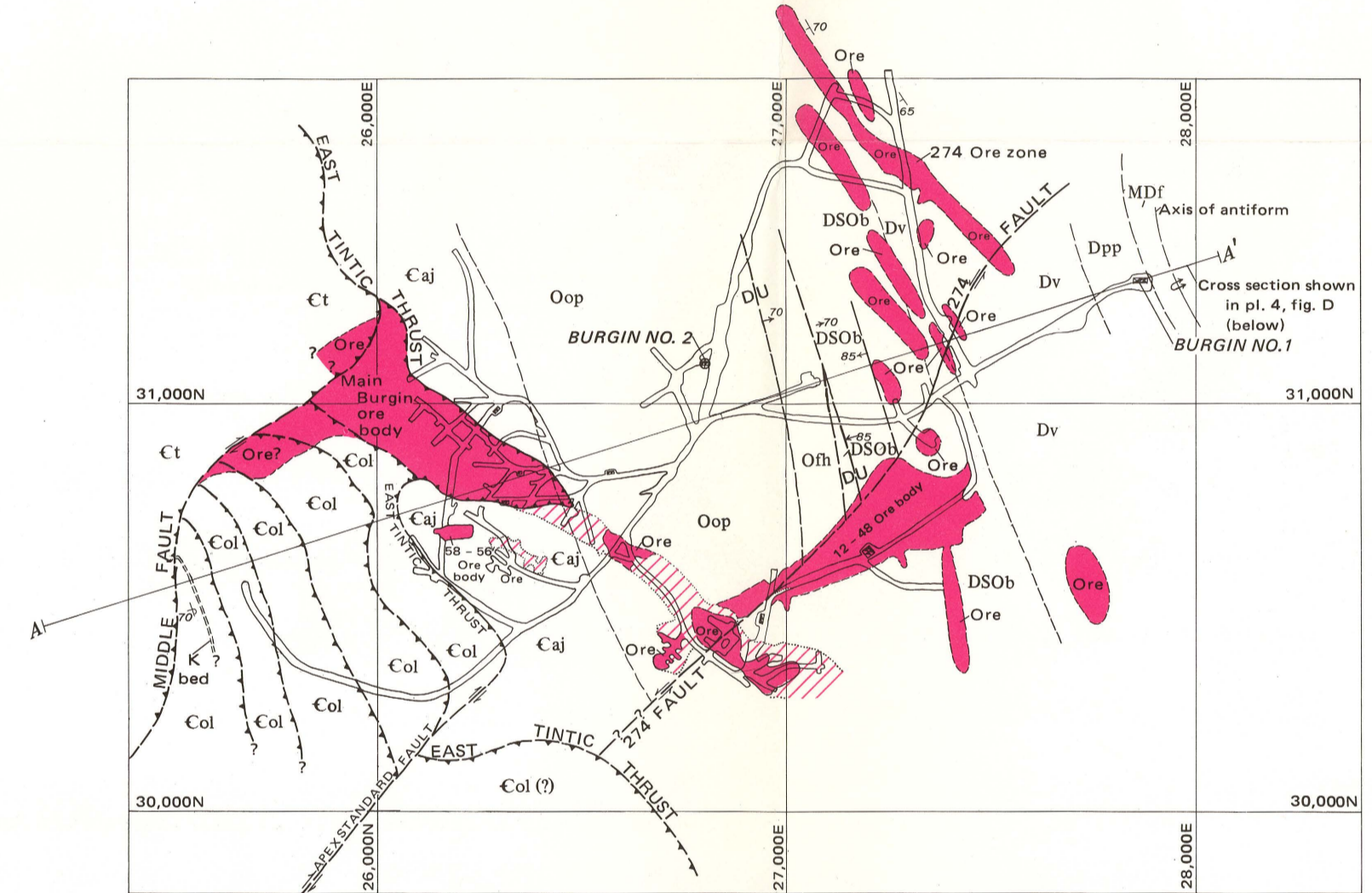
QE 75, U58p no. 1024 c.1



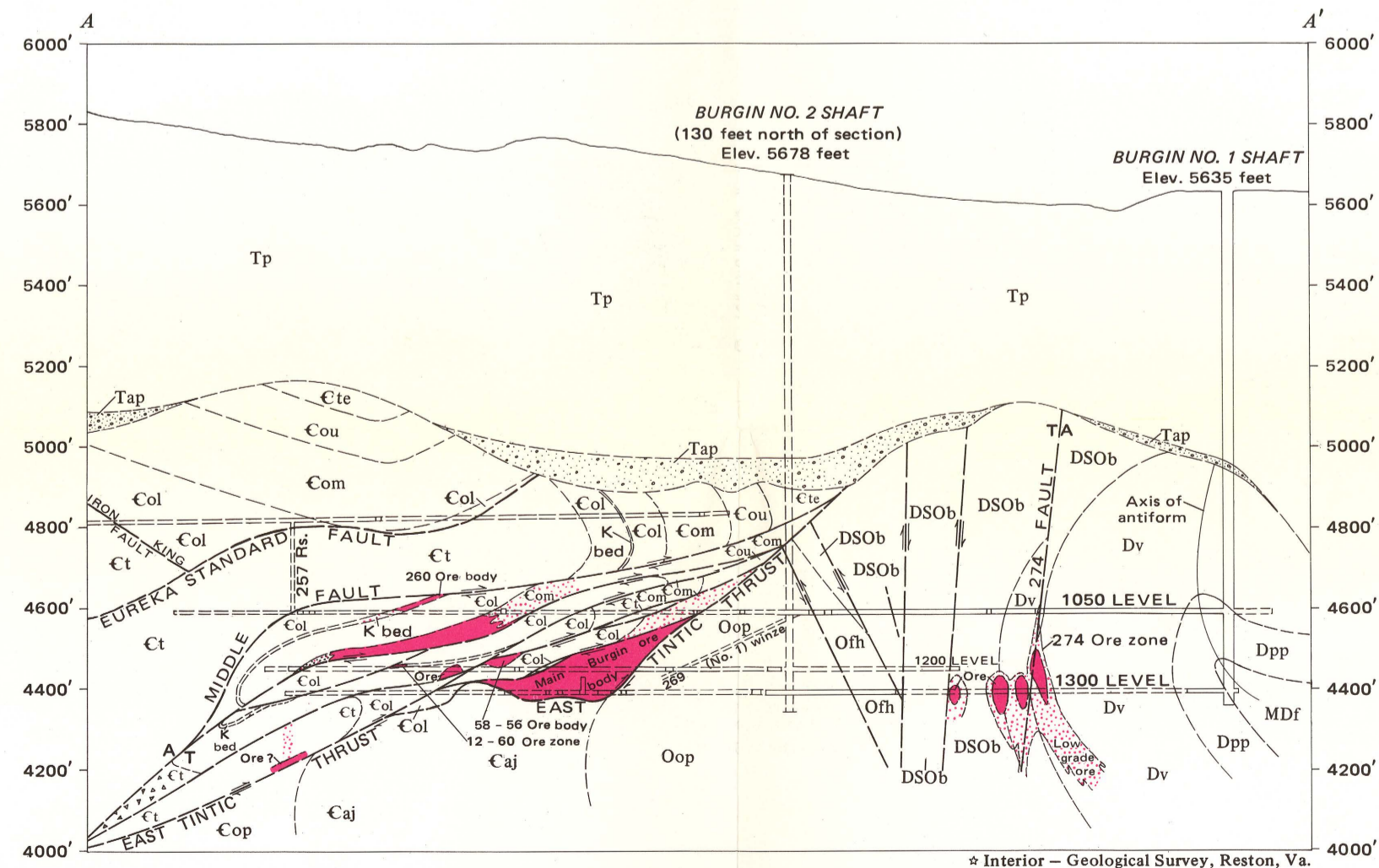
A. 1050 LEVEL ELEVATION 4585 - 4594 FEET



B. 1200 LEVEL ELEVATION 4452 FEET



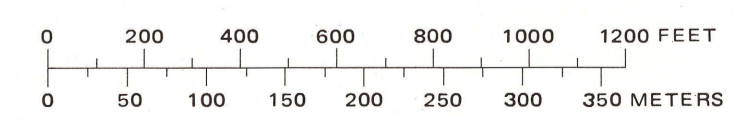
C. 1300 LEVEL ELEVATION 4394 FEET



D. GEOLOGIC CROSS SECTION

- EXPLANATION**
- Ore
 - Mineralized rocks and low-grade ore
 - Biotite-augite andesite dike
 - Argillized monzonite porphyry(?) dike
 - Pebble dike
 - Packard Quartz Latite
 - In many places includes Apex Conglomerate
 - Apex Conglomerate
 - Fitchville Formation
 - Pinyon Peak Limestone
 - Victoria Formation
 - Bluebell Dolomite
 - Fish Haven Dolomite
 - Ophongia Limestone
 - Ajax Dolomite
 - Opex Formation
 - Teutonic Limestone
 - Ophir Formation
 - Cou, upper shale member
 - Com, middle limestone member
 - Col, lower shale member with lower marker or K bed
 - Ct
 - Tintic Quartzite
- CONTACTS AND FAULTS**
- Contact, showing dip
 - Dashed where inferred, queried where doubtful
 - Fault, showing dip
 - Dashed where inferred; dotted where concealed; arrows show relative displacement; U, upthrown side; D, downthrown side; T, relative displacement toward observer, A, away from observer; queried where doubtful
 - Thrust fault
 - Sawtooth on side of upper plate. Dashed where inferred; dotted where concealed; queried where doubtful
 - Axis of antiform
 - Arrowhead shows direction of plunge
 - Axis of recumbent syncline
 - Strike and dip of beds
 - Strike and dip of overturned beds
 - Mine workings
 - Dashed where not on plane of cross section
 - Foot of raise
 - Head of winze
 - Inclined winze
 - Location of selected drill hole
 - ET-5
 - Location of selected drill hole
 - TS, Tintic Standard Mining Co., ET, Bear Creek Mining Co.
 - Breccia

TERTIARY
DEVONIAN AND MISSISSIPPIAN
DEVONIAN AND MISSISSIPPIAN
ORDOVICIAN, DEVONIAN, SILURIAN, AND DEVONIAN
CAMBRIAN



GEOLOGIC PLANS AND CROSS SECTION OF THE BURGIN MINE

Interior - Geological Survey, Reston, Va. 1978 - G77009