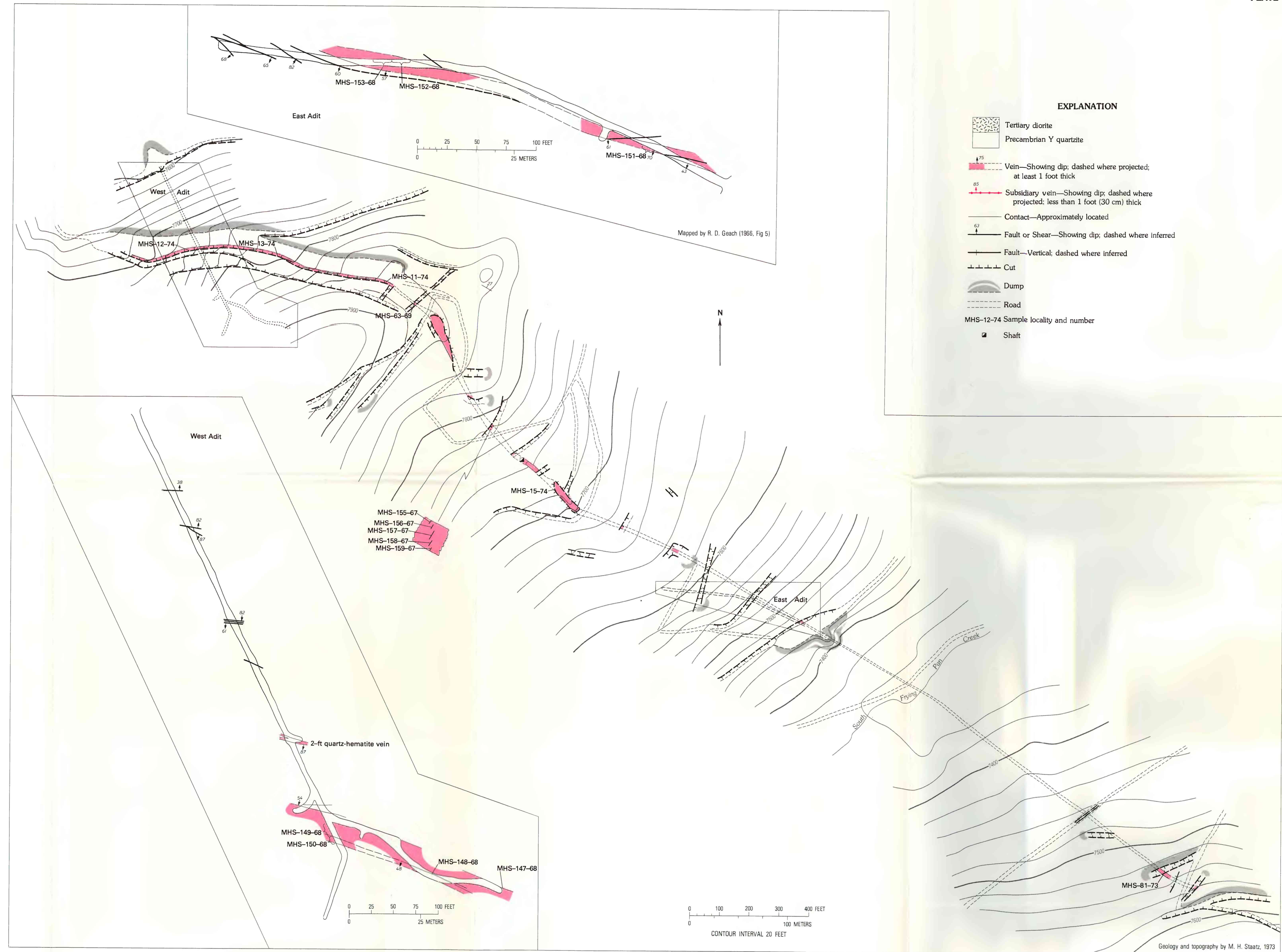
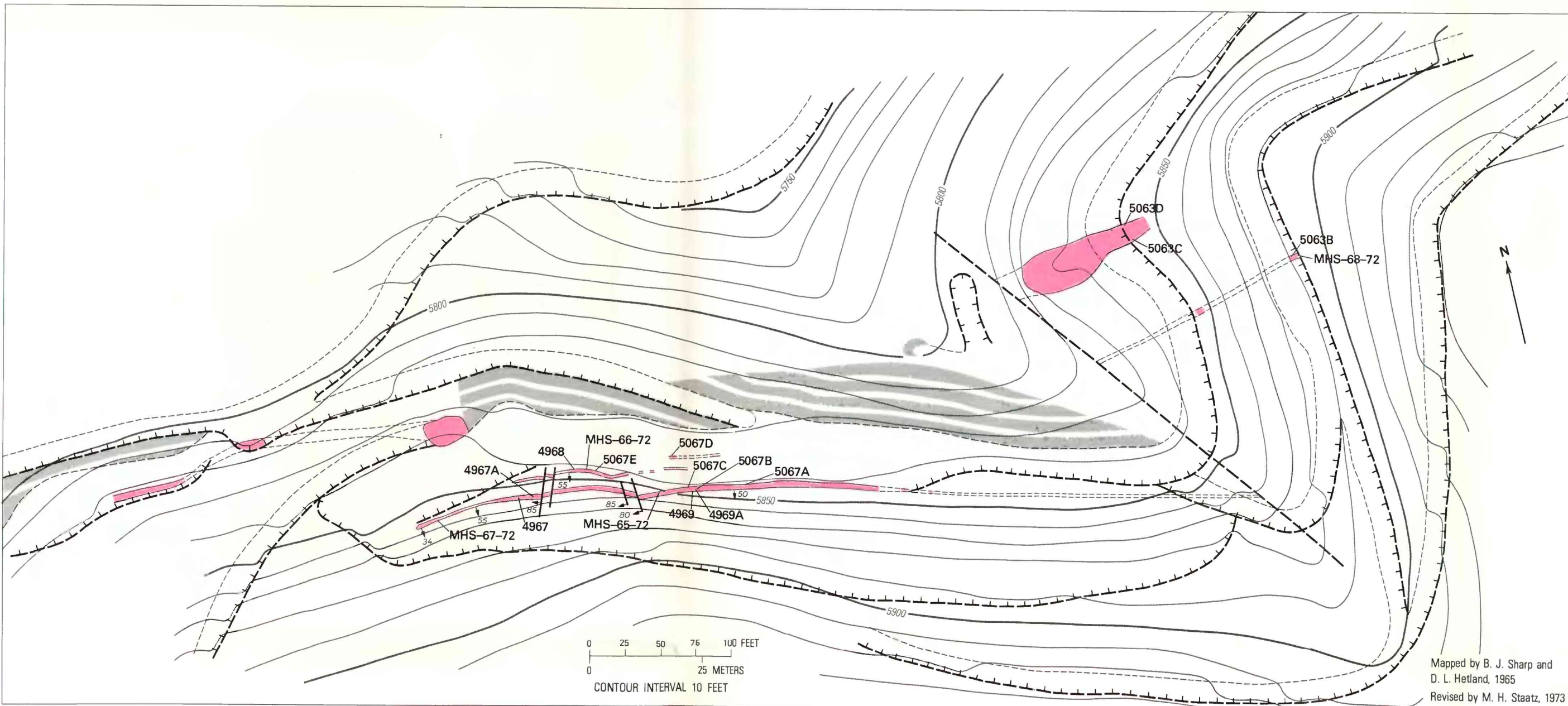


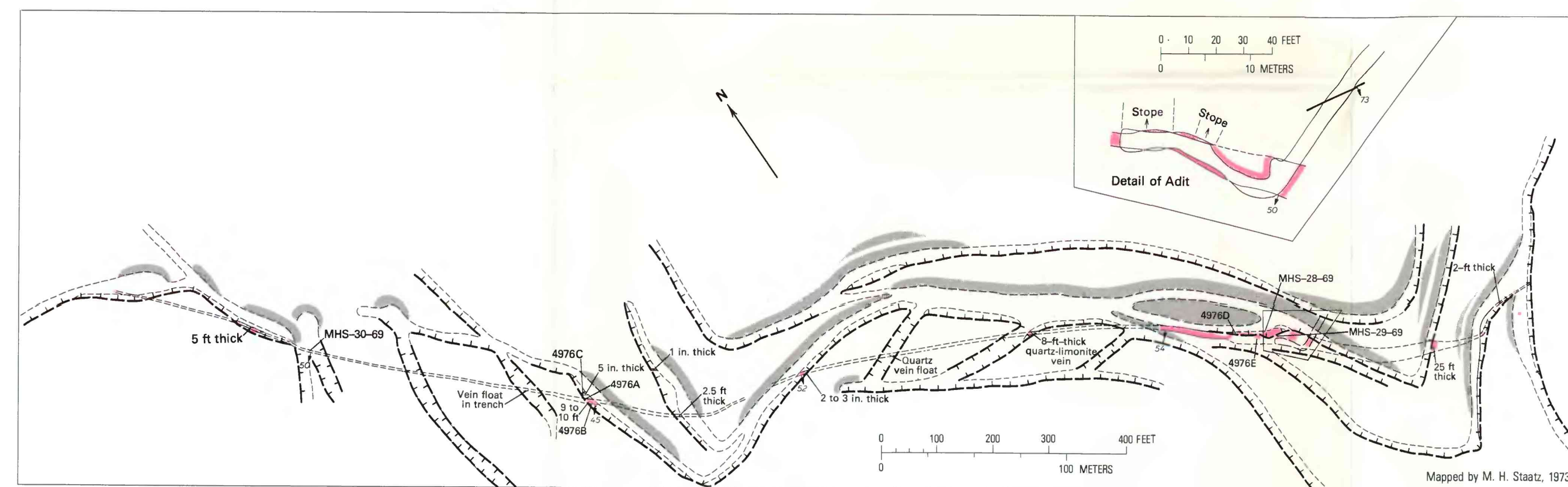
A—WONDER PROPERTY (LOCALITY 45)



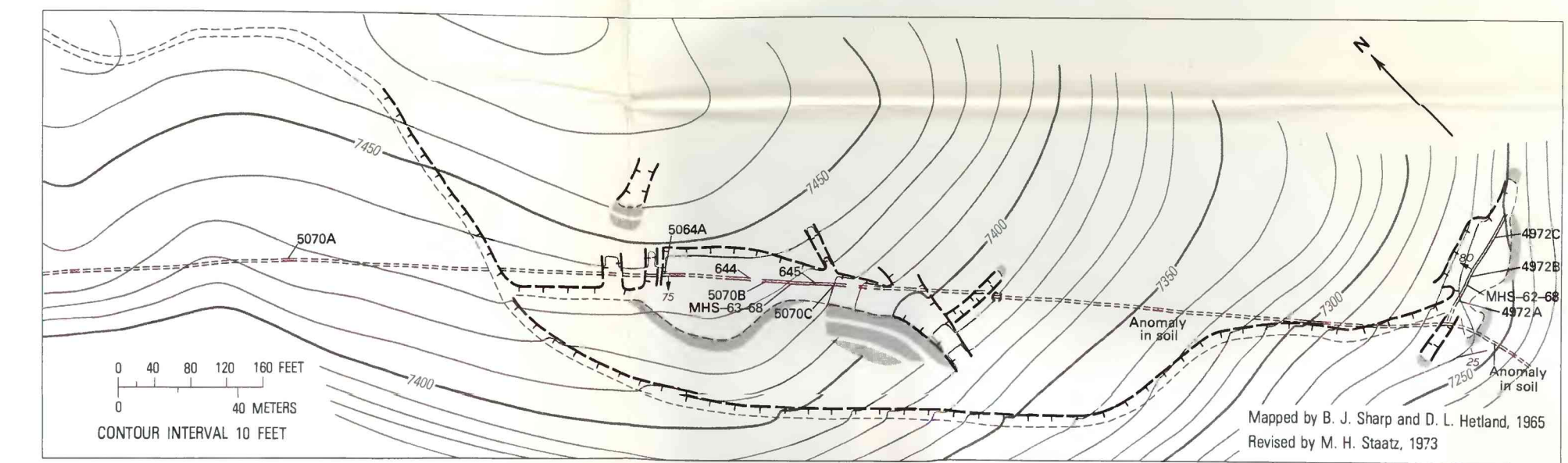
D—LAST CHANCE VEIN (LOCALITY 82)



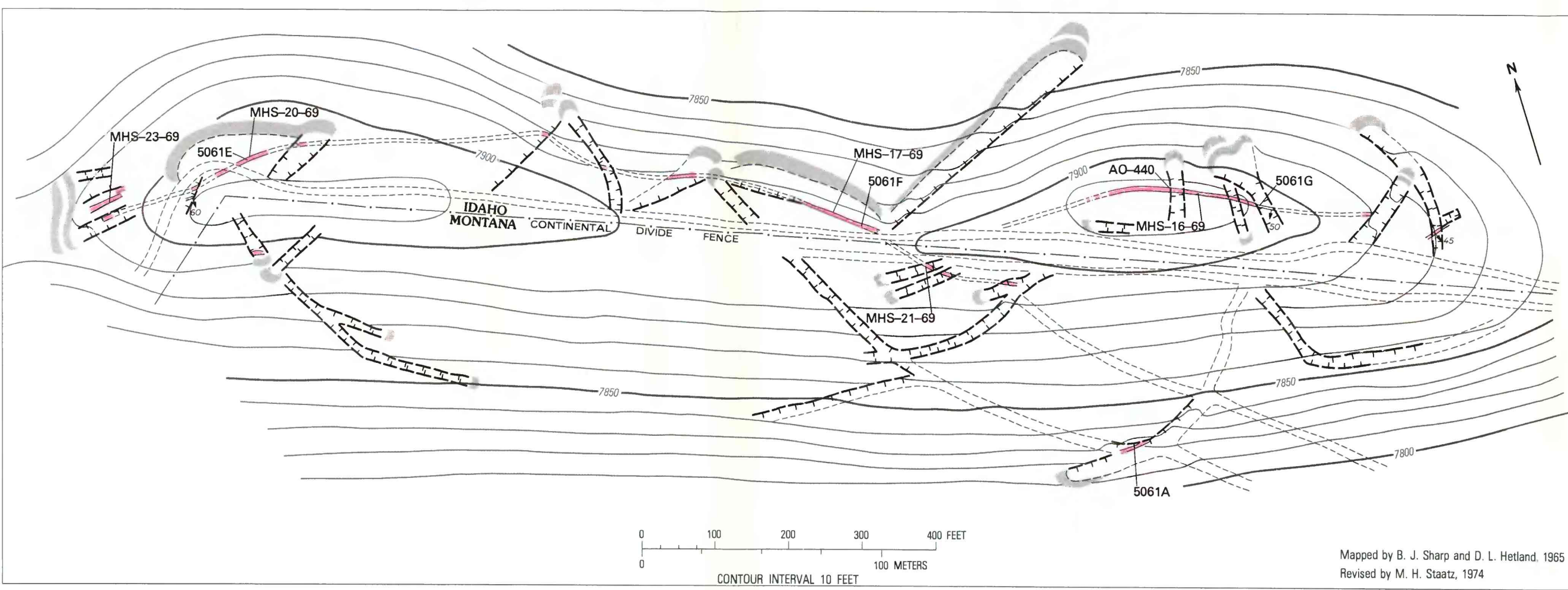
B—SILVER QUEEN 52B PROPERTY (LOCALITY 146)



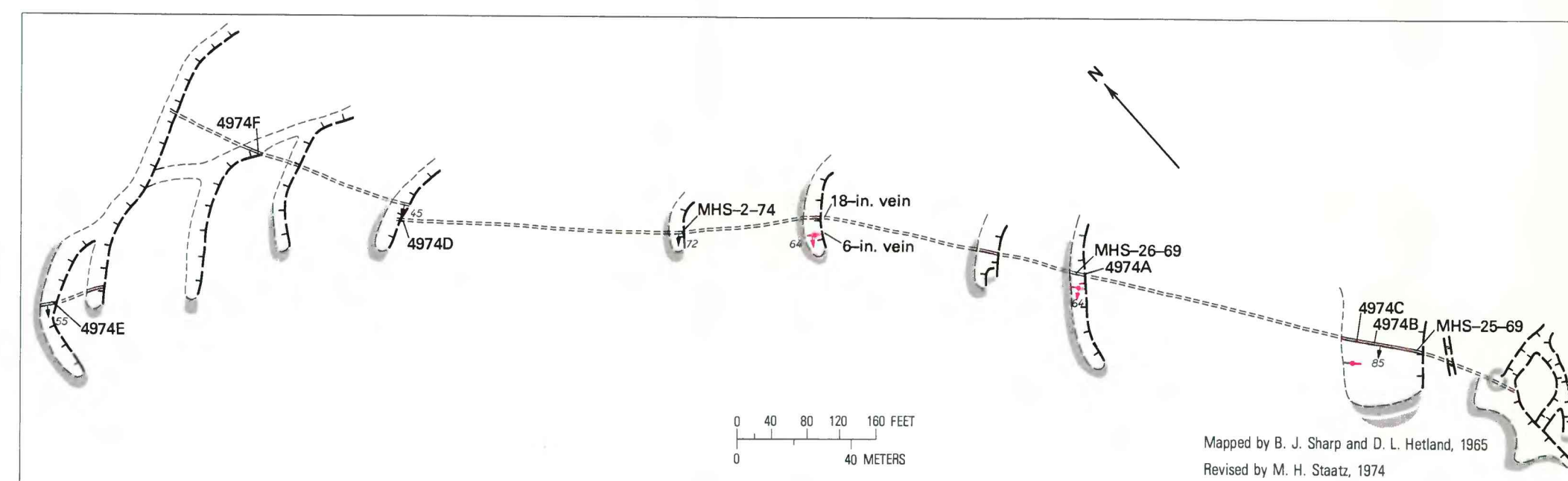
E—CAGO NUMBER 12 VEIN (LOCALITY 49)



G—BLACK ROCK (MONTANA) PROPERTY (LOCALITY 75)



C—CONTACT VEIN (LOCALITY 52)



F—REACTOR PROPERTY (LOCALITY 107)

- EXPLANATION**
- Tertiary diorite
 - Precambrian Y quartzite
 - Vein—Showing dip; dashed where projected; at least 1 foot thick
 - Subsecondary vein—Showing dip; dashed where projected; less than 1 foot (30 cm) thick
 - Contact—Approximately located
 - Fault or Shear—Showing dip; dashed where inferred
 - Fault—Vertical; dashed where inferred
 - Cut
 - Dump
 - Road
 - MHS-12-74 Sample locality and number
 - Shaft

**GEOLOGIC MAPS OF THORIUM PROPERTIES, LEMHI PASS
THORIUM DISTRICT, IDAHO AND MONTANA**