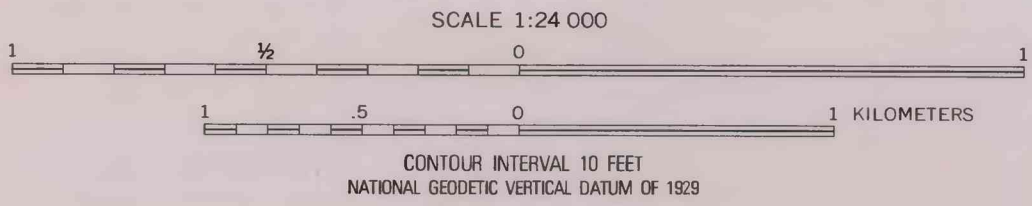
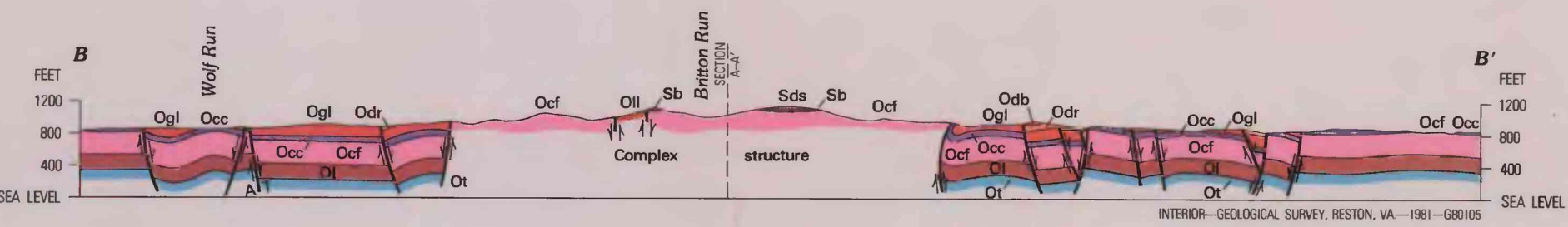
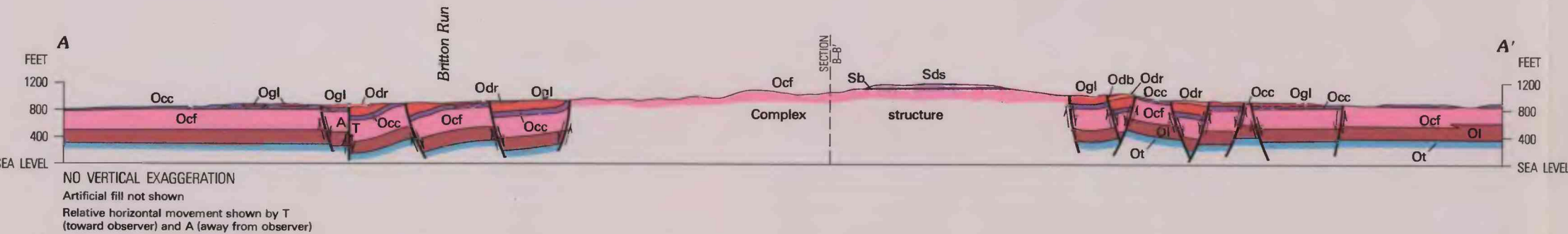


Base from U.S. Geological Survey, 1965  
Shelbyville and Waddy



Geology mapped by E. R. Cressman, 1973-74



GEOLOGIC MAP AND STRUCTURE SECTIONS OF THE JEPHTHA KNOB CRYPTOEXPLOSION STRUCTURE, SHELBY COUNTY, KENTUCKY