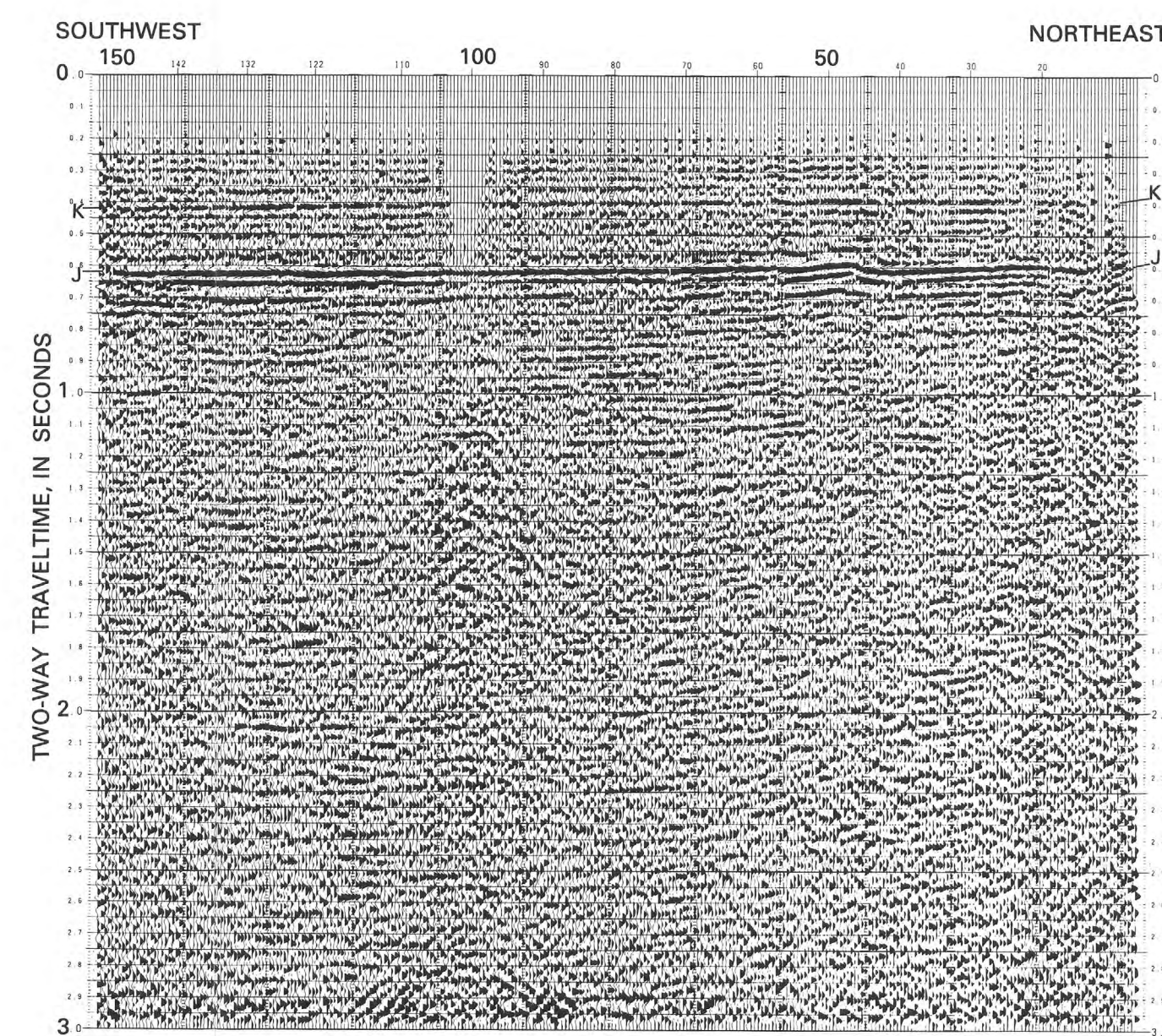
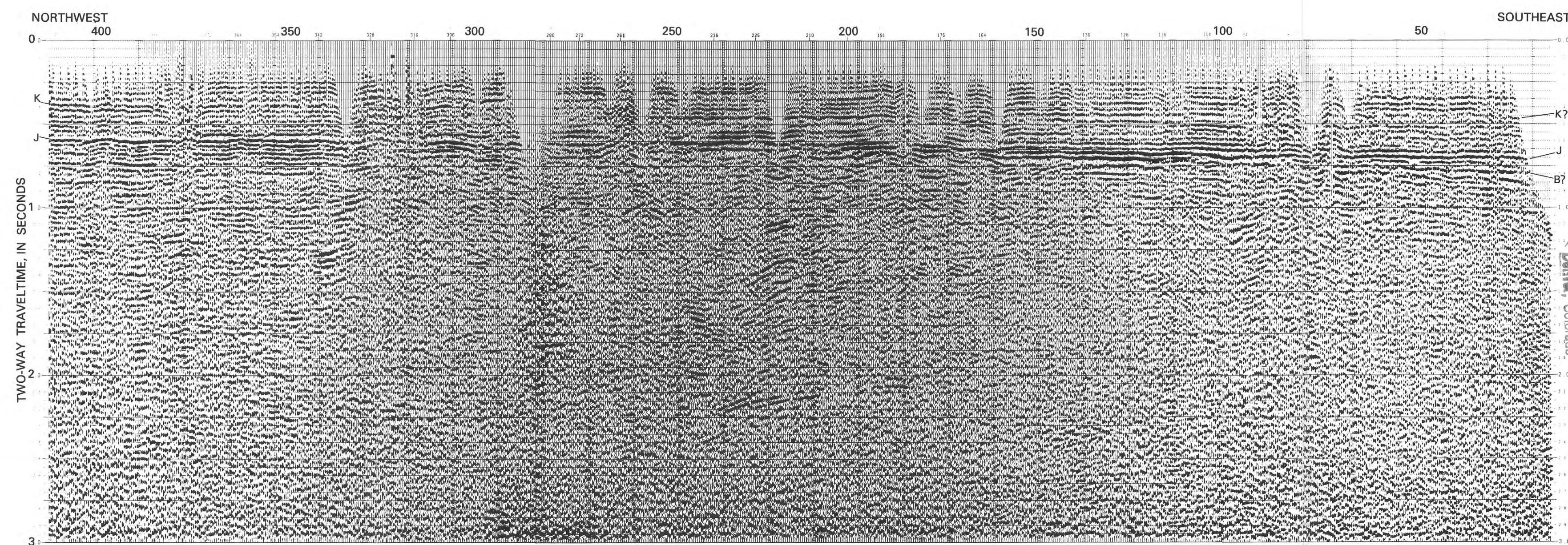


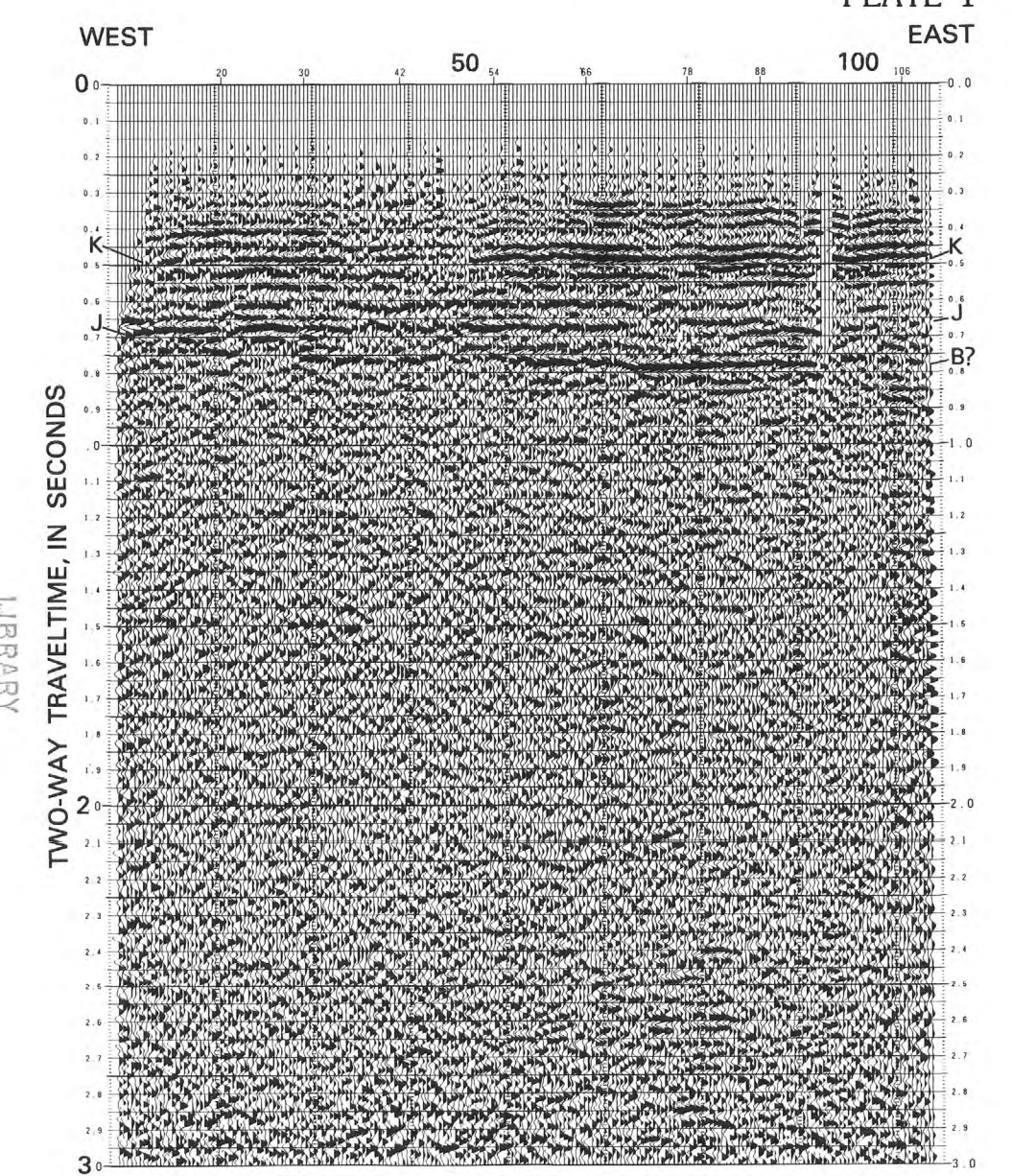
SC-9



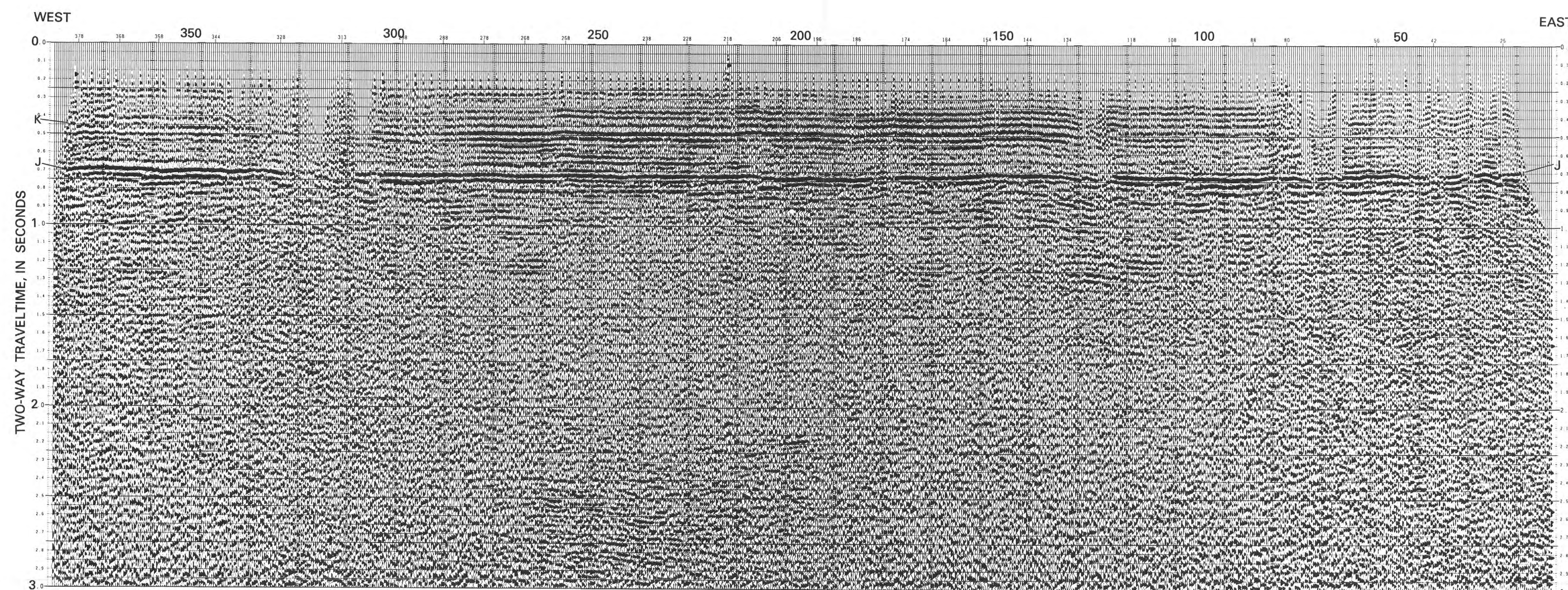
SC-7



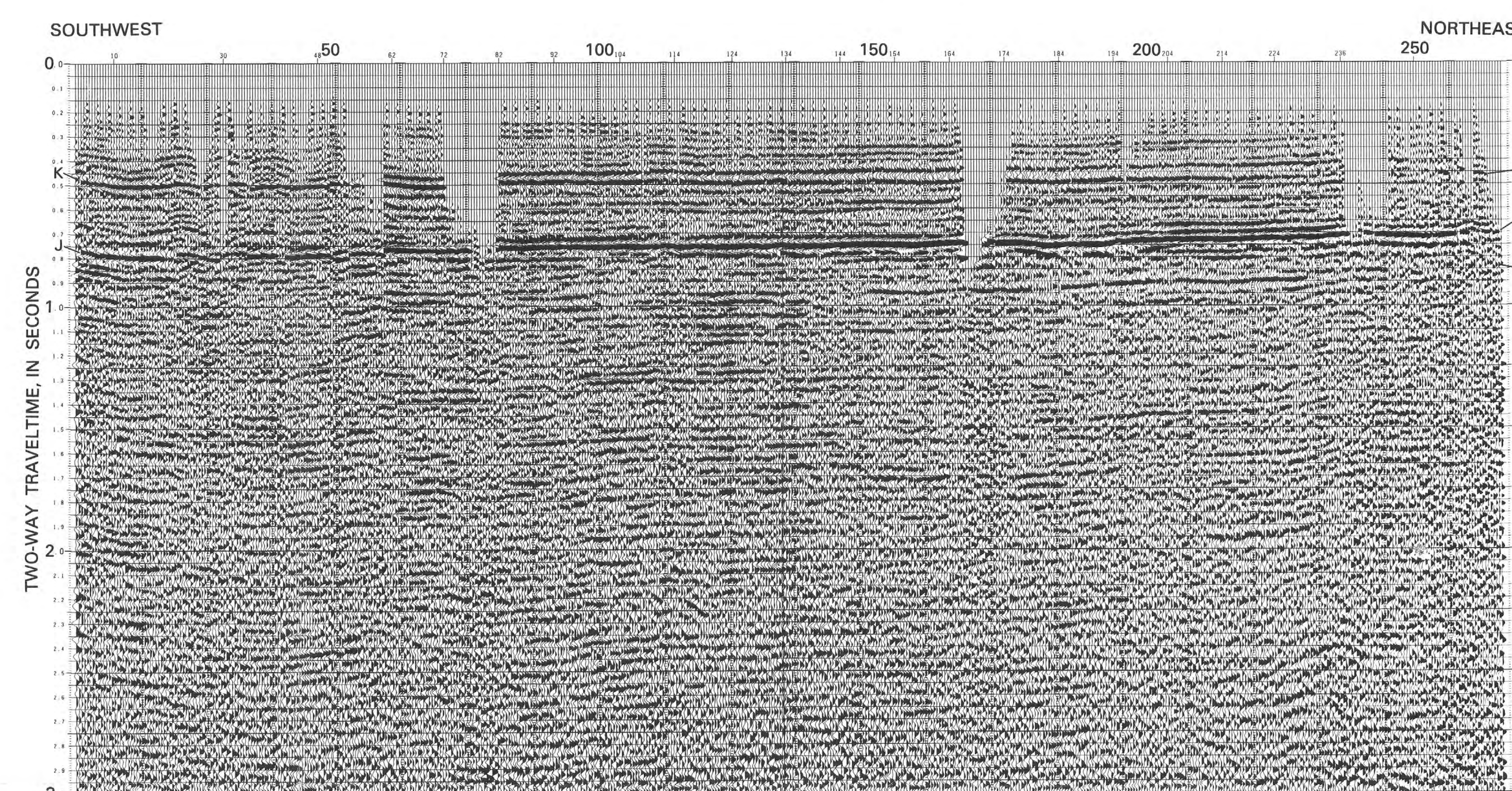
SC-6



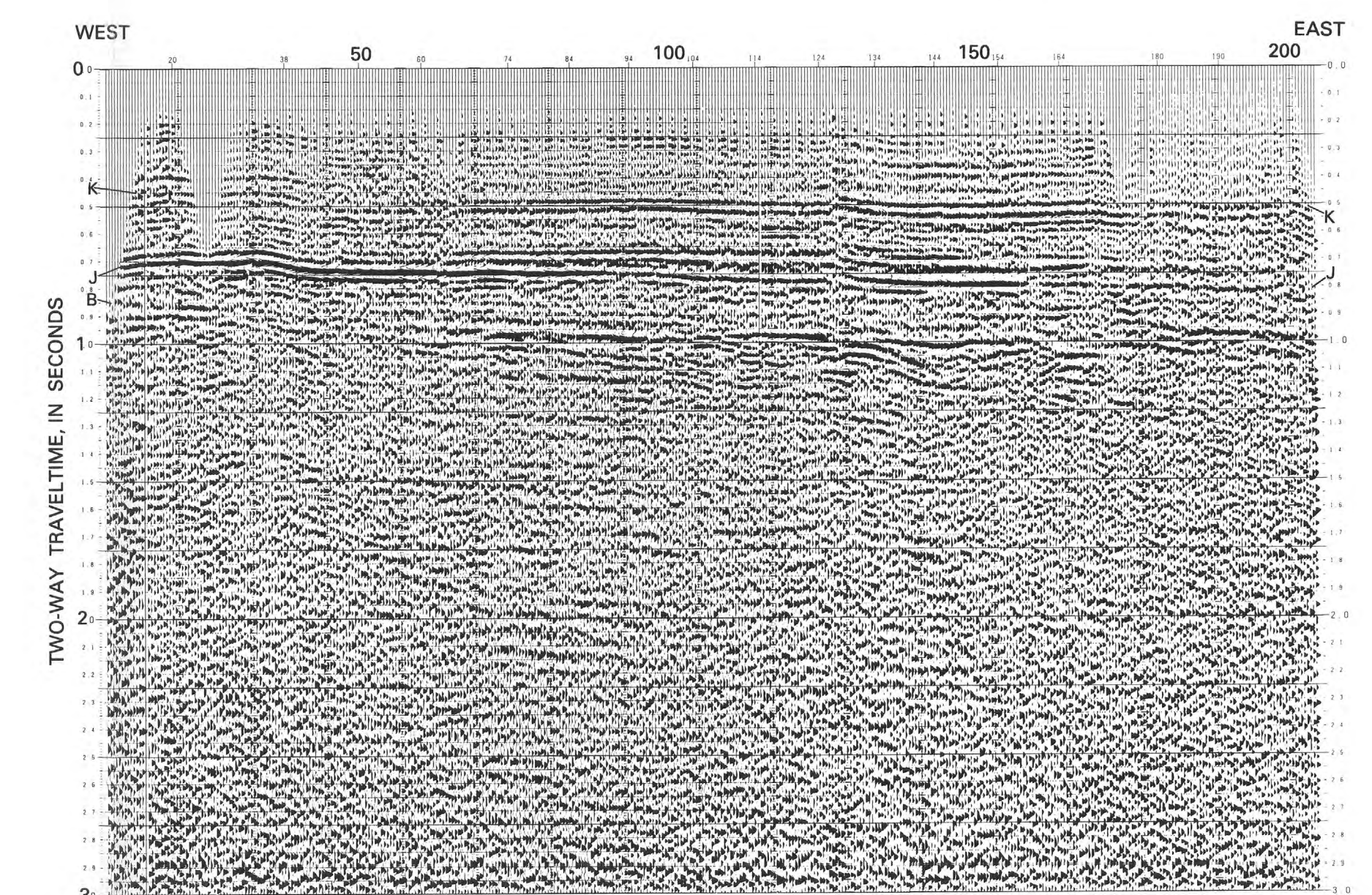
SC-8



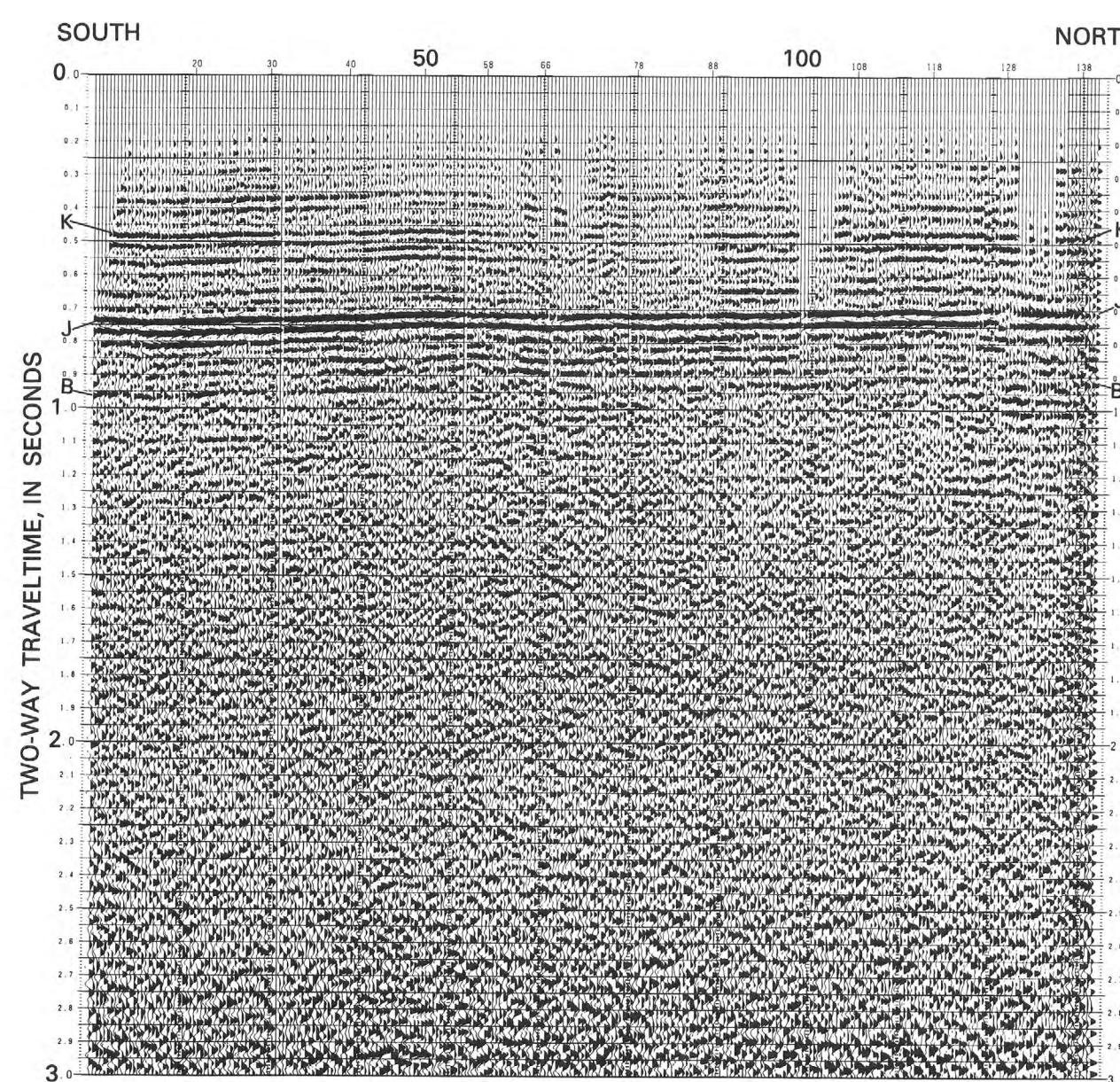
SC-2



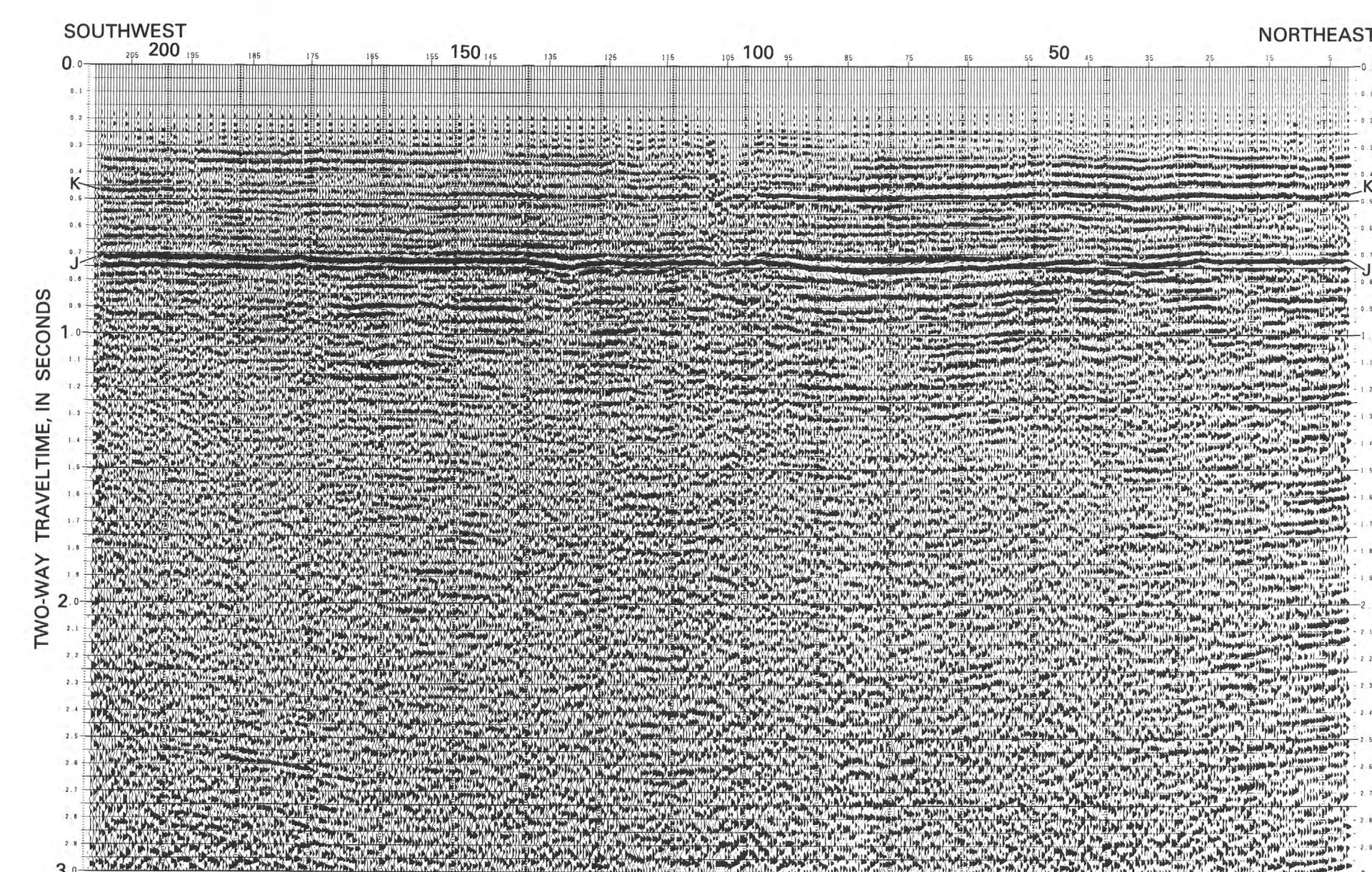
SC-5



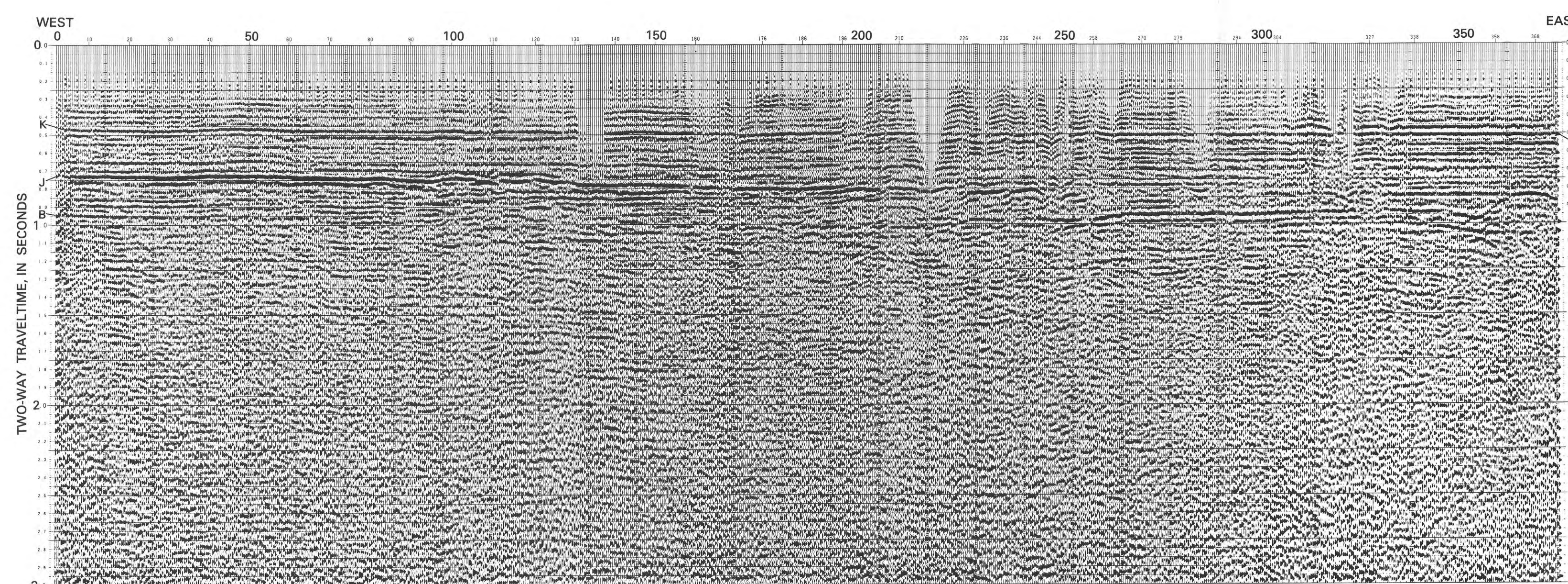
SC-10



SC-3



SC-1



SC-4

EXPLANATION
K Reflection from a lithologic change within the Black Creek Formation
J Reflection from contact between Upper Cretaceous sediments and Jurassic basalt (or other rock type where basalt is absent)
B Reflection that may be from crystalline basement
150 Vibration point

