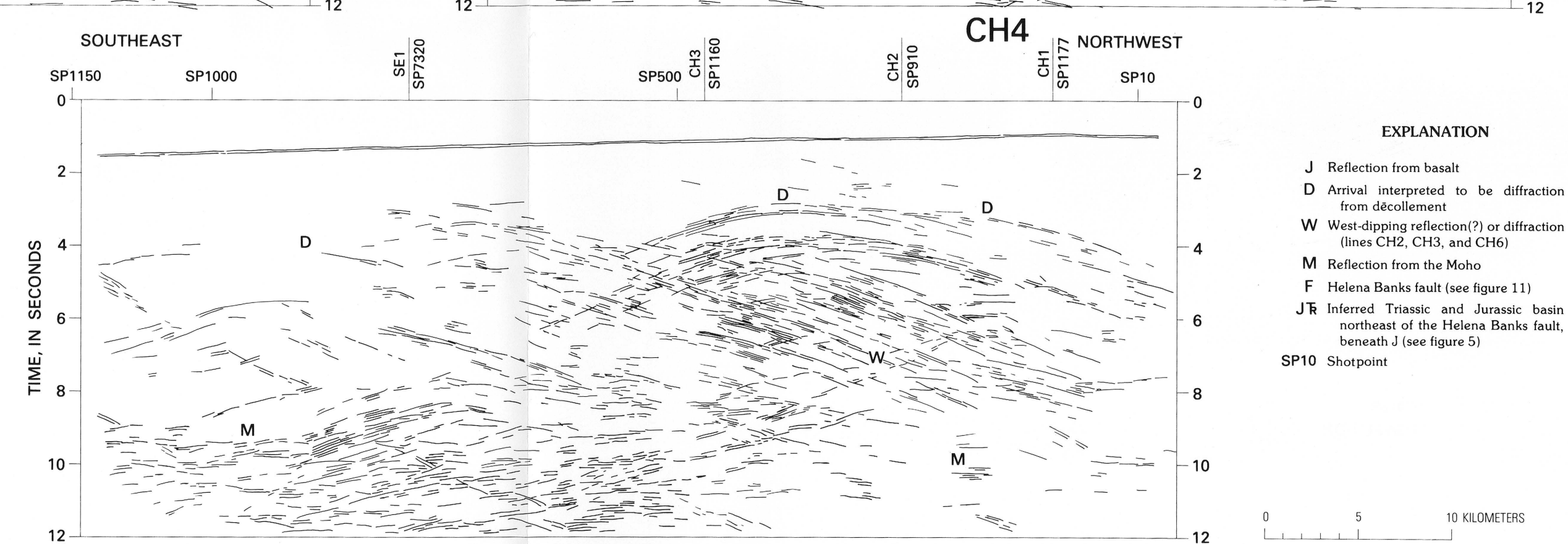
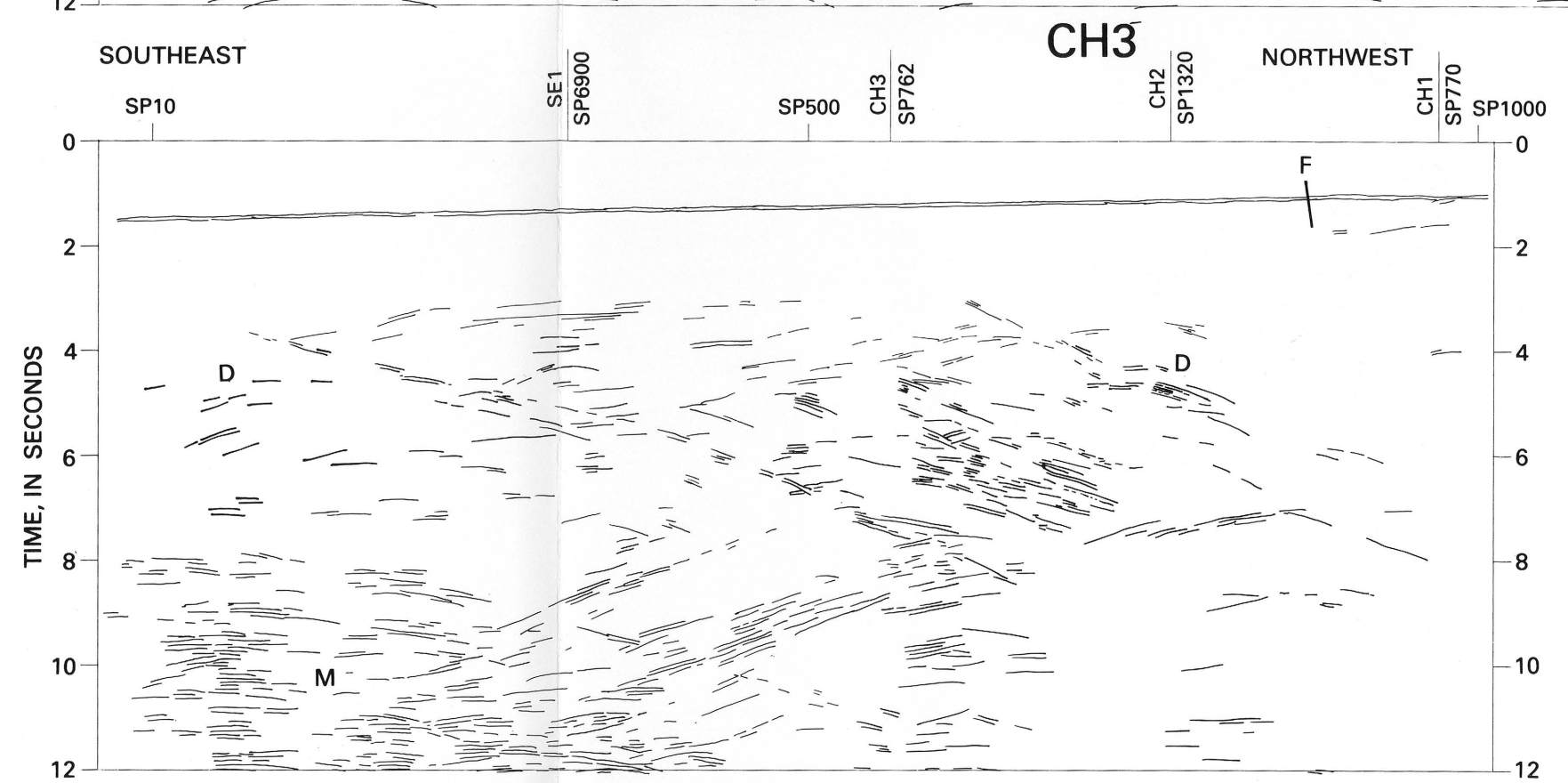
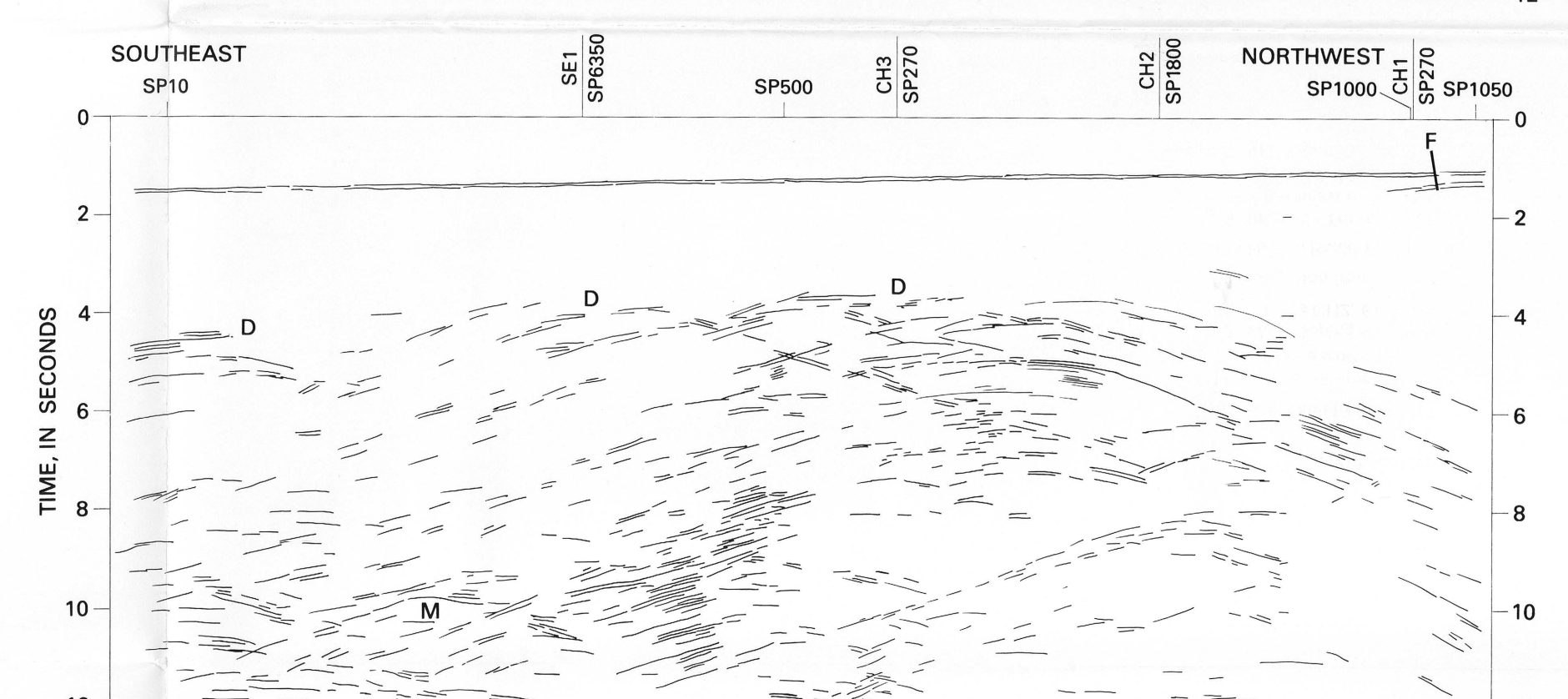
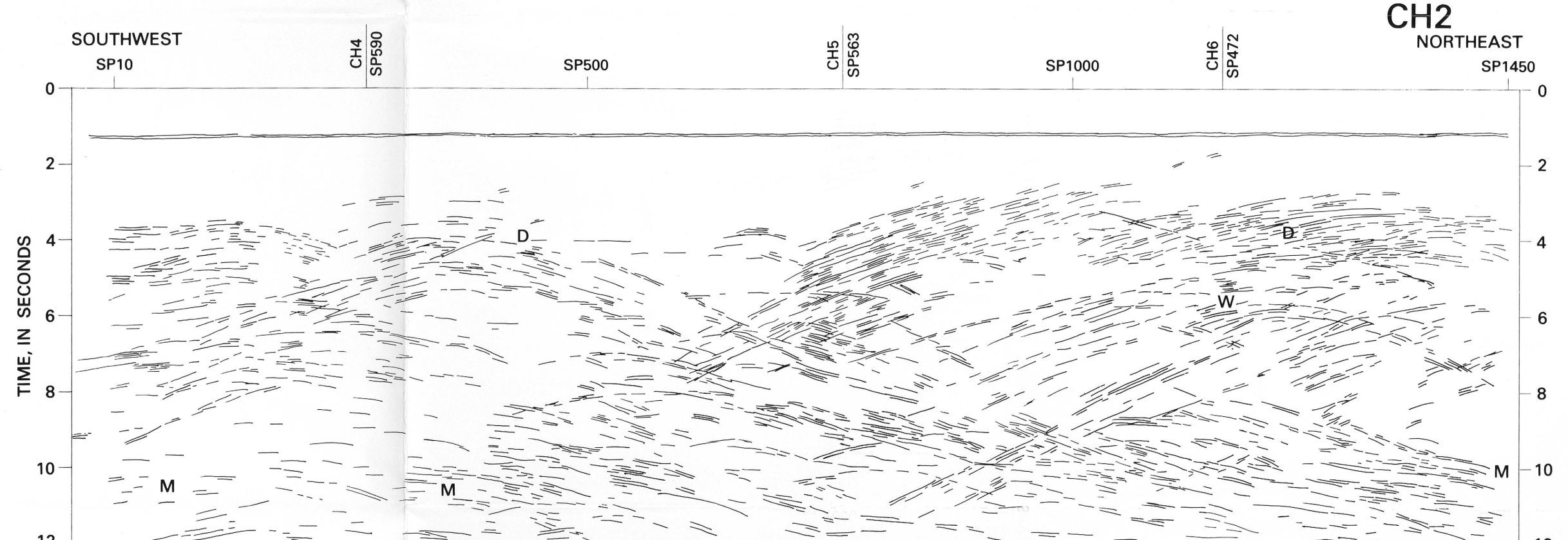
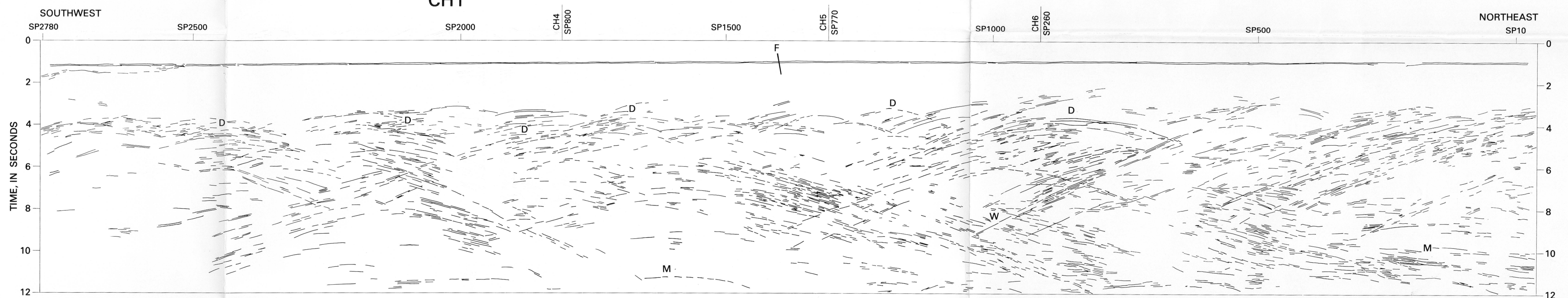
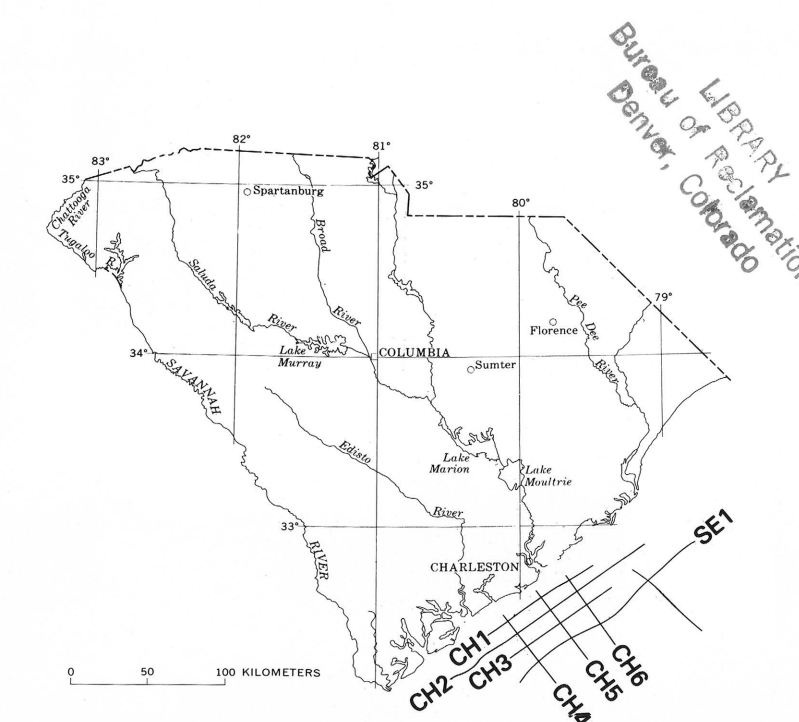
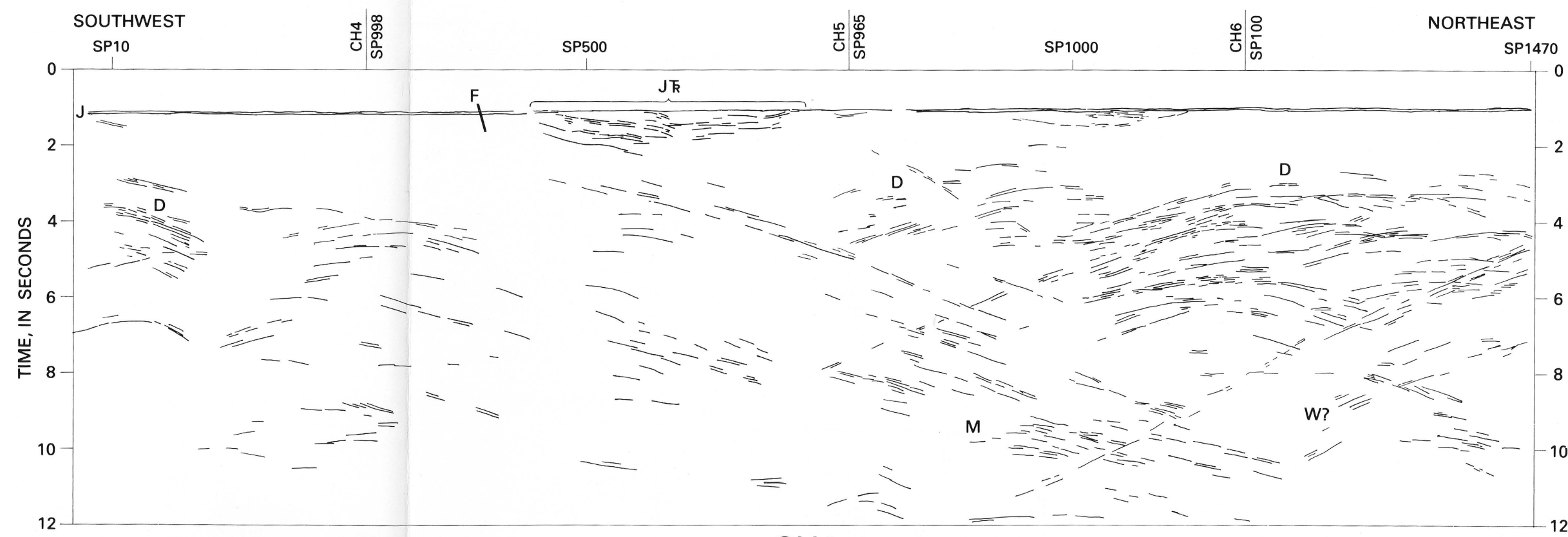


QE 75 .058p no. 1313 cr.)



- EXPLANATION**
- J Reflection from basalt
  - D Arrival interpreted to be diffraction from décollement
  - W West-dipping reflection(?) or diffraction (lines CH2, CH3, and CH6)
  - M Reflection from the Moho
  - F Helena Banks fault (see figure 11)
  - JR Inferred Triassic and Jurassic basin northeast of the Helena Banks fault, beneath J (see figure 5)
  - SP10 Shotpoint



LINE DRAWINGS OF DEEPER ARRIVALS INTERPRETED FROM MULTICHANNEL SEISMIC-REFLECTION RECORD SECTIONS FOR LINES CH1 THROUGH CH6