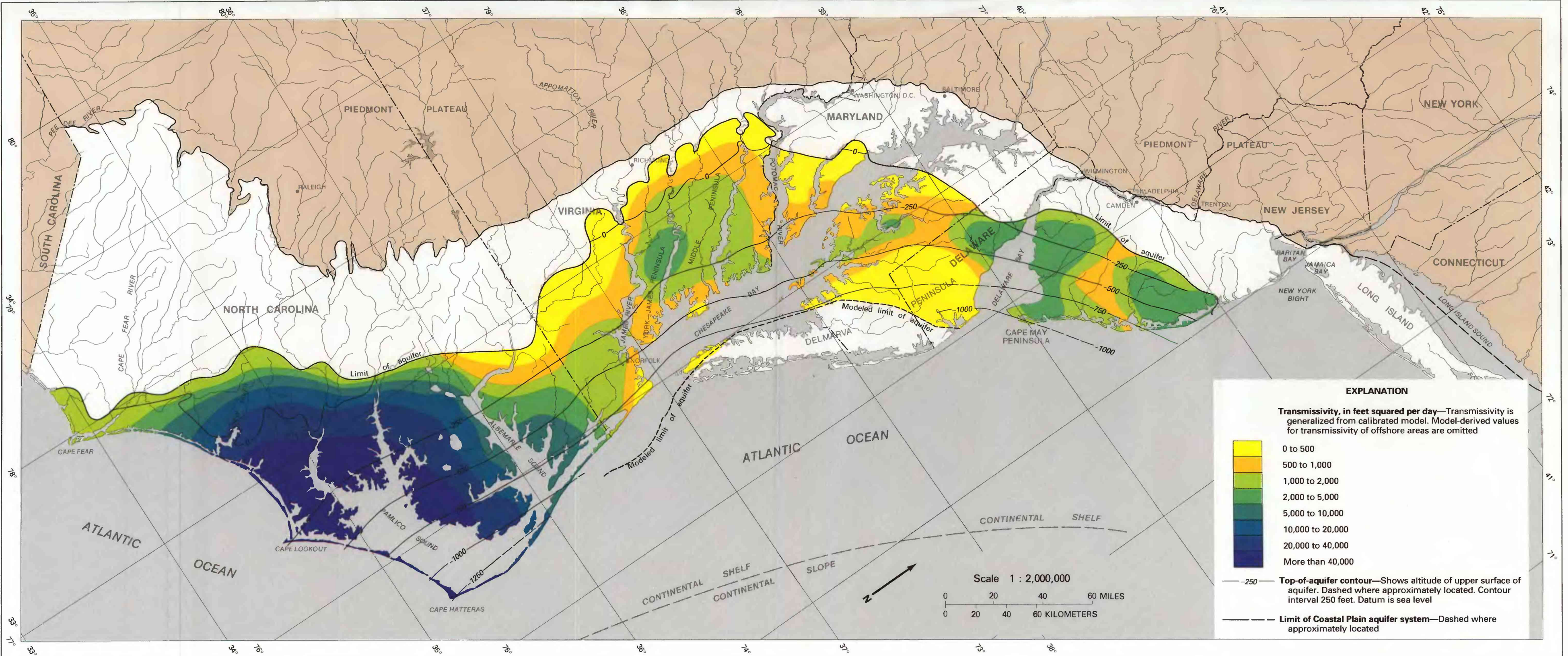


Base modified from U.S. Geological Survey
National Atlas, 1970

A. Altitude of the upper surface and distribution of transmissivity in the lower Chesapeake aquifer

From Trapp, in press; adapted from Leahy and Martin, in press



Base modified from U.S. Geological Survey
National Atlas, 1970

B. Altitude of the upper surface and distribution of transmissivity in the Castle Hayne-Piney Point aquifer

From Trapp, in press; adapted from Leahy and Martin, in press

Maps showing altitude of the upper surface and distribution of transmissivity in (A) the lower Chesapeake aquifer and (B) the Castle Hayne-Piney Point aquifer